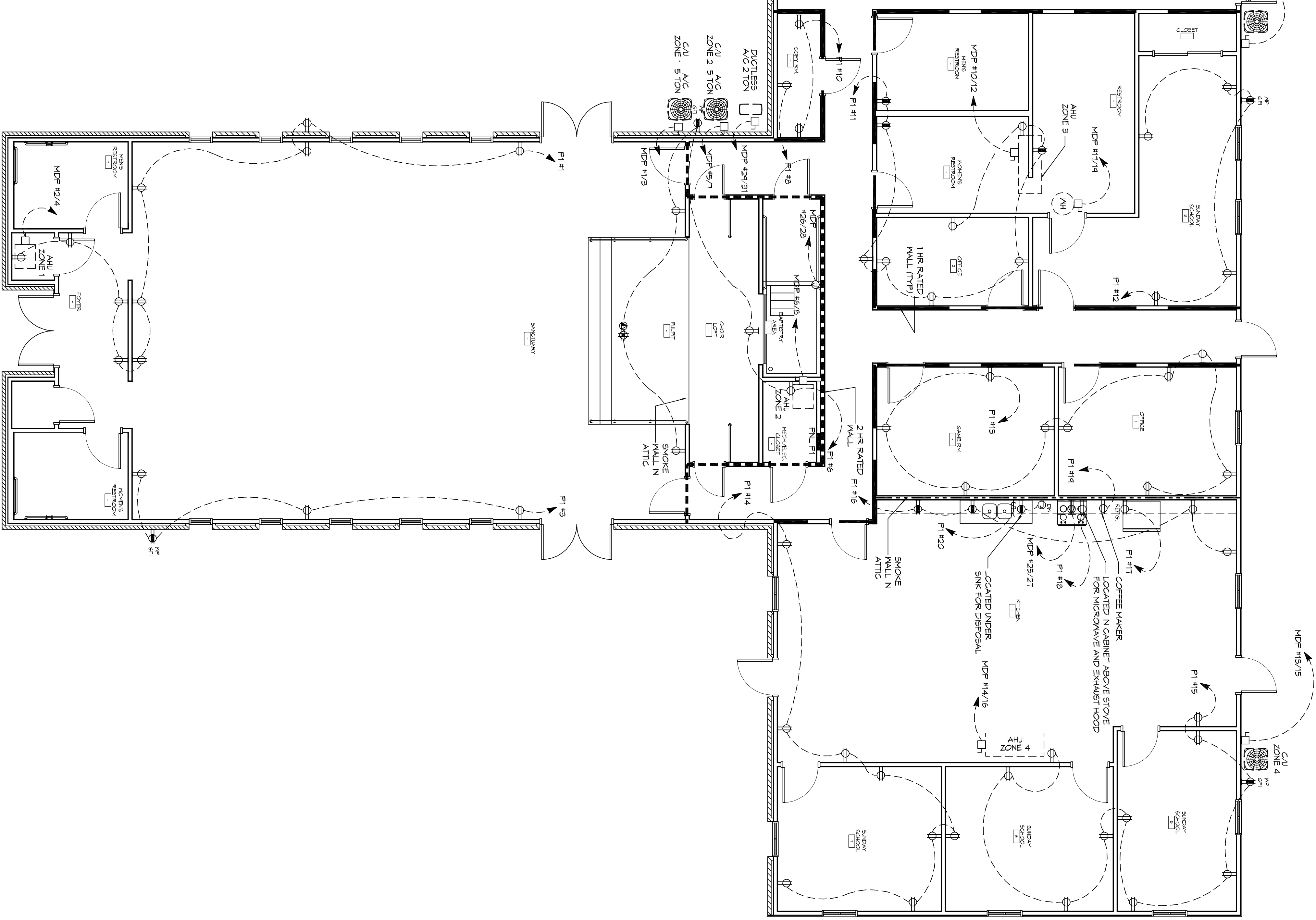


LEVEL 2 POWER PLAN  
SCALE: 3/16"=1'-0"



LEVEL 1 POWER PLAN  
SCALE: 3/16"=1'-0"

**GENERAL ELEC POWER NOTES**

1. ALL WORK SHALL CONFORM TO THE LATEST EDITION OF THE NATIONAL ELECTRICAL CODE, THE GOVERNING ELECTRICAL CODE AND ALL OTHER APPLICABLE CODES. THE DRAWINGS SHALL BE USED TO OBTAIN CERTIFICATES OF APPROVAL WHERE REQUIRED. ELECTRICAL CONTRACTORS SHALL VERIFY ALL WIRE AND CONDUIT SIZES FOR MECHANICAL EQUIPMENT TO BE INSTALLED.
2. ALL MATERIALS FURNISHED SHALL BE NEW AND SHALL BE U.L. LISTED.
3. THE DRAWINGS INDICATE SIZE AND GENERAL LOCATION OF WORK. SCALE DIMENSIONS SHALL NOT BE USED. THE EXACT LOCATION OF ALL LIGHTING FIXTURES, RECEPTACLES AND TELEPHONE OUTLETS, ETC., SHALL BE DETERMINED BY ACTUAL CONDITIONS IN THE FIELD.
4. PRIOR TO BIDDING, CONTRACTOR SHALL VISIT THE JOB SITE AND FAMILIARIZE HIMSELF WITH THE EXISTING CONDITIONS.
5. ELECTRICAL CONTRACTOR SHALL COORDINATE HIS WORK WITH OTHER TRADE CONTRACTORS WHOSE WORK MAY AFFECT THIS INSTALLATION.
6. ELECTRICAL CONTRACTOR SHALL COORDINATE INCLUDING ELECTRICAL SERVICE WITH UTILITY COMPANY AND INCLUDE IN HIS BID ALL CHARGES AND FEES INCURRED IN MODIFICATIONS.
7. ELECTRICAL CONTRACTOR SHALL COORDINATE WITH THE TELEPHONE CONTRACTOR.
8. WHERE MORE THAN ONE SWITCH OCCURS IN THE SAME LOCATION, THEY SHALL BE INSTALLED IN A GANG TYPE BOX UNDER ONE COVER PLATE.
9. ELECTRICAL CONTRACTOR, BEFORE INSTALLING ANY OF THE WORK, SHALL SEE THAT IT DOES NOT INTERFERE WITH CLEARANCES REQUIRED FOR EXISTING COLUMNS, HANG CEILING, PLASTER, PARTITIONS, WALLS, ETC. AS SHOWN IN THE ARCHITECTURAL DRAWINGS AND DETAILS. IF ANY INTERFERENCE IS ENCOUNTERED, THE CONTRACTOR SHALL NOTIFY THE ARCHITECT IMMEDIATELY. THE CONTRACTOR SHALL MAKE SUCH CHANGES IN THE WORK AS DIRECTED BY THE ARCHITECT, AS WELL AS TO PERMIT THE INSTALLATION OF THE ARCHITECTURAL WORK AS SHOWN ON THE PLANS AND DETAILS.
10. PERFORMANCE TEST REQUIRED BY THE OWNER OR THE ENGINEER IN CONNECTION WITH THE OPERATION OF THE ELECTRICAL SYSTEM IN THE BUILDING. ALL TESTS SHALL BE MADE IN ACCORDANCE WITH THE LATEST EDITION OF THE IEEE AND THE NATIONAL ELECTRICAL CODE.
11. CONDUIT SHALL BE 3/4" ELECTRICAL METAL TUBING (EMT) FOR NON-METALLIC CABLE IN MOOD FRAME CONSTRUCTION AREAS ONLY. IN RECEPTACLE CIRCUITS IN MOOD FRAME CONSTRUCTION AREAS ONLY, IN STEEL FRAMING AREAS THE USE OF EMT (MINI-MAX) IS REQUIRED. EXTERIOR FITTINGS SHALL BE CAST BOXES AND COVERS. INTERIOR FITTINGS SHALL BE STAMPED BOXES.
12. CONTRACTOR SHALL INSTALL WIRING AND OTHER CIRCUIT COMPONENTS TO MATCH EQUIPMENT ACTUALLY INSTALLED.
13. INSTALL GROUND FAULT RECEPTACLES AT RECEPTACLE LOCATIONS WITHIN 5' OF SINKS OR LAVATORIES, AND AT EXTERIOR LOCATIONS. EXTERIOR RECEPTACLES SHALL ALSO BE WATERPROOF.
14. BONDING AND GROUNDING SHALL BE IN ACCORDANCE WITH NFPA 70:200-60, NFPA 250-20, 250-11 & 250-12.
15. GROUND NEUTRAL IN ACCORDANCE WITH NFPA 70:250-230.
16. FUSES SHALL BE 1TT CLASS K5, 250 VOLT, 200,000 AMP INTERRUPTING CAP.
17. PROVIDE SERVICES OF A FIRE/SMOKE DETECTION AND ALARM COMPANY TO DESIGN AND INSTALL ALARM SYSTEM TO MEET REQUIREMENTS OF THE STATE FIRE MARSHALL AND THE FIRE DISTRICT.
18. EXTERIOR LIGHTING SHALL BE SHROUDED OR INWARDLY DIRECTED IN SUCH A MANNER SO THAT NO LIGHTING IS DIRECTED OR CAST BEYOND THE PROPERTY LINE. EXTERIOR LIGHTING SHALL BE SHROUDED OR INWARDLY DIRECTED IN SUCH A MANNER SO THAT NO LIGHTING IS DIRECTED OR CAST BEYOND THE PROPERTY LINE. EXCEPT ONE FOOT CANDLE AS REQUIRED AT THE ABUTTING PROPERTY LINE.
19. ALL ELECTRICAL, MECHANICAL, AND PUMBINP PENETRATING FIRE PARTITIONS SHALL BE FIRE CALLED (PENETRATIONS THROUGH RATED CONSTRUCTION SHALL BE SEALED WITH A MATERIAL CAPABLE OF PREVENTING THE PASSAGE OF FLAMES AND HOT GASES WHEN TESTED IN ACCORDANCE WITH ASTM-E814.)
20. VERIFY ELECTRICAL CONNECTIONS PER MANUFACTURERS' RECOMMENDATIONS.
21. ALL RECEPTACLES AND SWITCHES ARE TO HAVE WEATHER PROOF COVERS IN APPROPRIATE BAY. 50% OF ALL EXTERIOR WEATHER PROOF COVERS SHALL BE IN-USE COVERS.

**LEGEND**

SYMB	DESCRIPTION
⊖	STANDARD 120V/ DUPLEX RECEPTACLE, NEMA 5-3 OR 10' AFF (UNLESS OTHERWISE NOTED)
⊖	SINGLE-POLE MEDICAL RECEPTACLE - REFER TO PANEL SCHEDULE FOR CIRCUIT SIZE
⊖	6FCI DUPLEX RECEPTACLE
⊖	6FCI QUAD RECEPTACLE
⊖	220V ELECTRICAL DRYER RECEPTACLE - MOUNTED AT 30" AFF
⊖	220V DEDICATED 6FCI RECEPTACLE
⊖	WEATHER PROOF 6FCI DUPLEX RECEPTACLE MOUNTED AT 30" AFF (UNLESS OTHERWISE NOTED)
⊖	STANDARD 120V DUPLEX RECEPTACLE - FLOOR MOUNTED
⊖	STANDARD QUAD RECEPTACLE - FLOOR MOUNTED
⊖	120V/15 AMP DUPLEX 5/DC 3 AMP
⊖	120V/15 AMP QUADPLEX 5/DC 3 AMP
⊖	120V/15 AMP QUADPLEX 5/DC 3 AMP
⊖	120V/15 AMP QUADPLEX 5/DC 3 AMP
⊖	JUNCTION BOX
⊖	GENERATOR BATTERY CHARGER
⊖	2-BUTTON PUSH BUTTON STATION
⊖	COAX-CABLE CONNECTION FOR TELEVISION
⊖	WALL MOUNTED DATA OUTLET
⊖	FLOOR DATA OUTLET
⊖	POWER DISCONNECT
⊖	6AS WATER HEATER ON DECK OR MEZZANINE ABOVE - SIZE AS NOTED ON PLAN
⊖	AS CONDITIONING AIR HANDLING UNIT ON DECK OR MEZZANINE ABOVE; SEE MECHANICAL DRAWINGS
⊖	AS CONDITIONING CONDENSER UNIT ON CONCRETE PAD; SEE MECHANICAL DRAWINGS
⊖	EXHAUST FAN - SEE MECH.

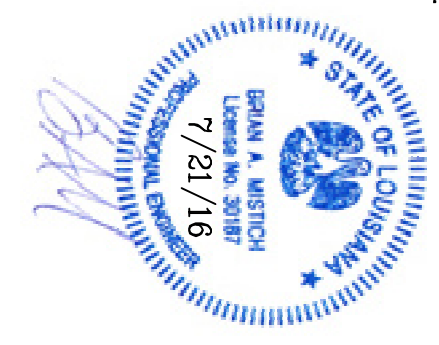
**NOTES:**  
 1. CONNECT ALL PERSERVICENT LIGHT FIXTURES TO NEAREST CONSTANT POWER SOURCE.

**DAMMON ENGINEERING, INC.**  
 LOUISIANA & MISSISSIPPI

Chief Engineer: Brian Misch, PE  
 554 Old Spanish Trail  
 Slidell, LA 70458

www.dammonengineering.com  
 info@dammonengineering.com  
 PH: 985.649.5832 F: 985.641.5950

NO.	DESCRIPTION	DATE



**BAYOU BAPTIST CHURCH**

1941 SULLIVAN DR.  
 SLIDELL, LA 70460

JOB No: 2274 DATE: 07/21/2016  
 DRAWN BY: NMM/JTL CHECKED BY: BAM

SHEET TITLE:  
**POWER PLAN**

DRAWING NUMBER:  
**E102**

SHEET NO.: 16 OF 17