

CONNECTION	FRAMING SPACING (INCHES)	ROOF SPAN (FEET)	U	L	S	NUMBER OF 8d COMMON NAILS OR 10d BOX NAILS IN EACH END OF 1 1/4"x30 GA STRAP
ROOF ASSEMBLY TO WALL ASSEMBLY	16" OC	T1	306	246	109R	4
WALL ASSEMBLY TO WALL ASSEMBLY	16" OC	T1	306	246	109R	4
HEADER TO HEADER (FACE NAIL)	16" OC	T1	170	185	436	4

FOUNDATION SUPPORTING RESISTING	FOUNDATION SUPPORTING	UPLIFT LOADS	1 - 3 STORES	8 END ZONES	INTERIOR ZONES
BOTTOM PLATE TO FOUNDATION ANCHOR BOLT CONNECTION	FOUNDATION SUPPORTING	1 - 3 STORES	26	33	33

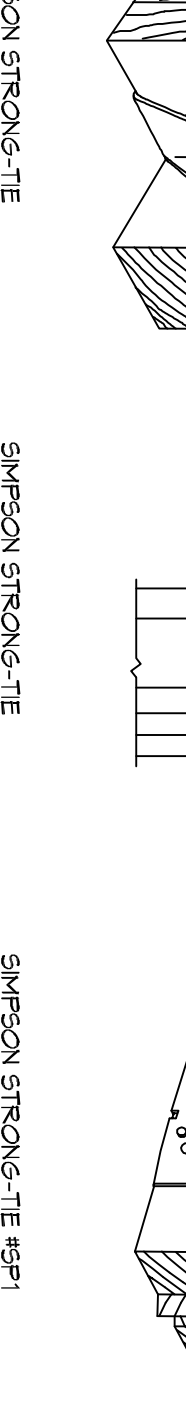
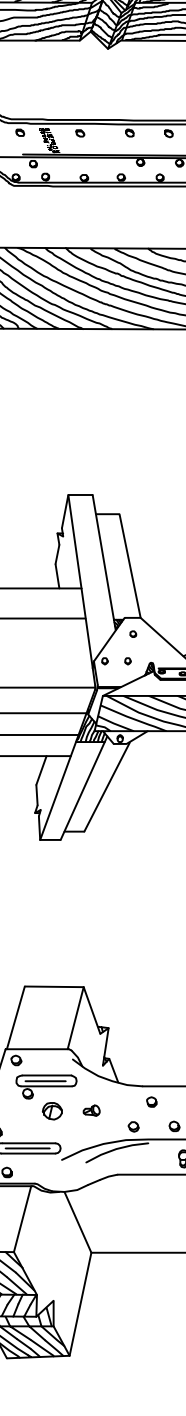
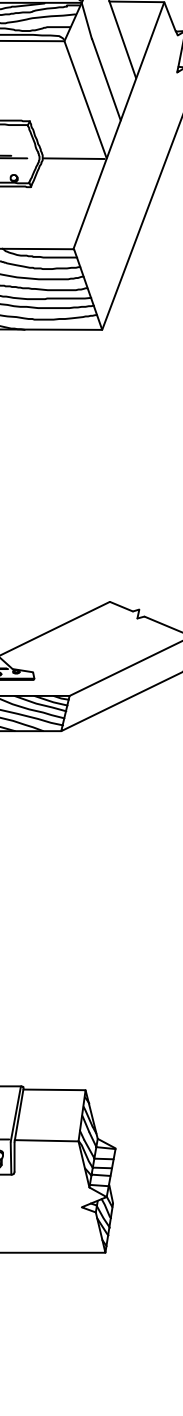
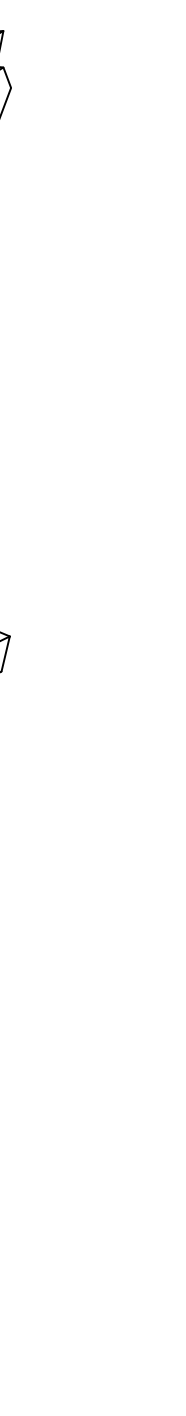
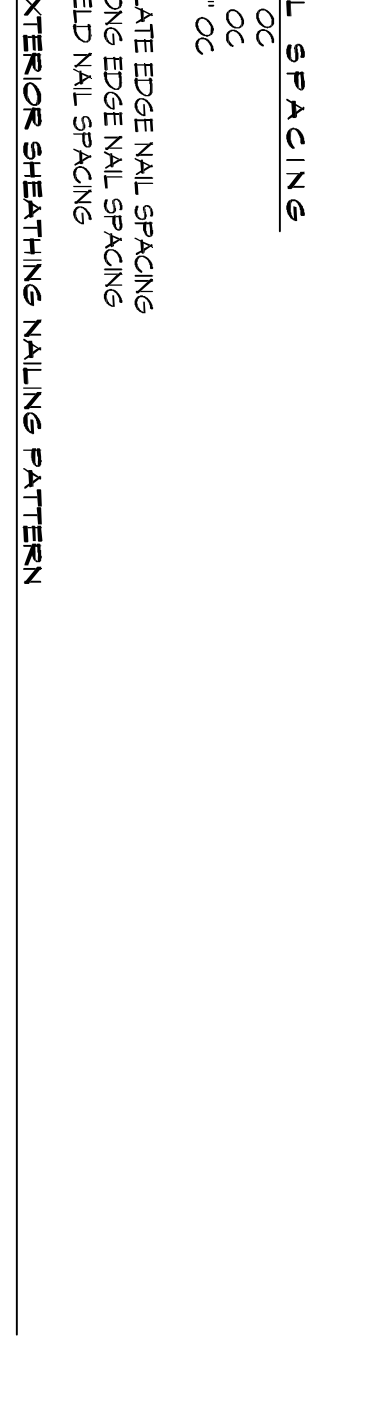
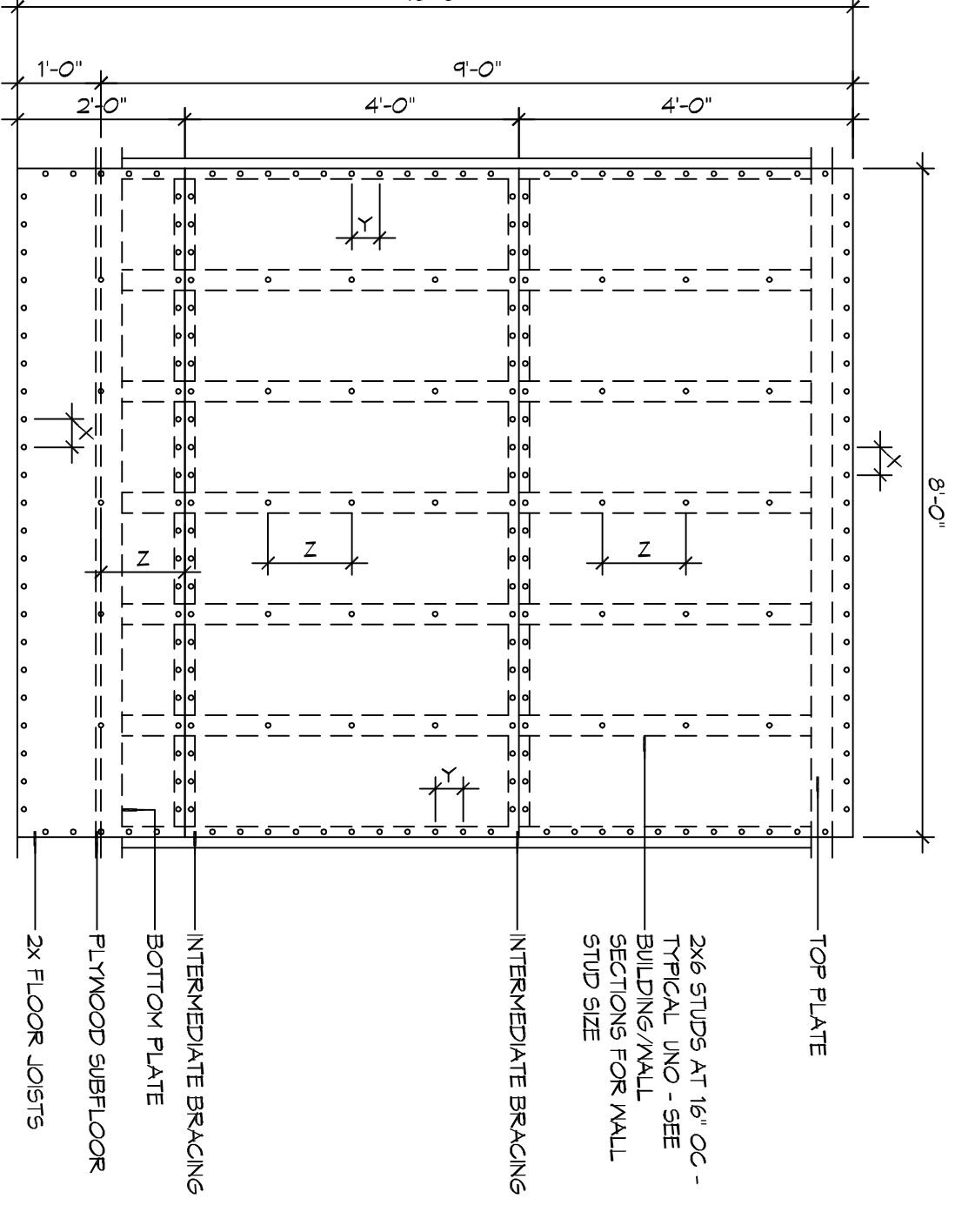
FOUNDATION SUPPORTING RESISTING	FOUNDATION SUPPORTING	UPLIFT LOADS	1 - 3 STORES	8 END ZONES	INTERIOR ZONES
BOTTOM PLATE TO FOUNDATION ANCHOR BOLT CONNECTION	FOUNDATION SUPPORTING	1 - 3 STORES	30	45	45

HEADER SPAN (FT)	12 FEET			24 FEET			36 FEET		
	3"	4.5"	5"	3"	4.5"	5"	3"	4.5"	5"
2	1	1	1	1	1	1	1	1	1
4	1	1	1	1	1	1	1	1	1
6	1	1	1	1	1	1	1	1	1
8	1	1	1	1	1	1	1	1	1
10	1	1	1	1	1	1	1	1	1
12	1	1	1	1	1	1	1	1	1
14	2	1	1	1	1	1	1	1	1
16	2	1	1	1	1	1	1	1	1
2	1	1	1	1	1	1	1	1	1
4	1	1	1	1	1	1	1	1	1
6	2	1	1	1	1	1	1	1	1
8	2	1	1	1	1	1	1	1	1
10	2	1	1	1	1	1	1	1	1
12	3	2	2	2	2	2	2	2	2
14	3	2	2	2	2	2	2	2	2
16	3	2	2	2	2	2	2	2	2
2	1	1	1	1	1	1	1	1	1
4	1	1	1	1	1	1	1	1	1
6	2	1	1	1	1	1	1	1	1
8	2	1	1	1	1	1	1	1	1
10	2	1	1	1	1	1	1	1	1
12	3	2	2	2	2	2	2	2	2
14	3	2	2	2	2	2	2	2	2
16	3	2	2	2	2	2	2	2	2
2	1	1	1	1	1	1	1	1	1
4	1	1	1	1	1	1	1	1	1
6	2	1	1	1	1	1	1	1	1
8	2	1	1	1	1	1	1	1	1
10	2	1	1	1	1	1	1	1	1
12	3	2	2	2	2	2	2	2	2
14	3	2	2	2	2	2	2	2	2
16	3	2	2	2	2	2	2	2	2

MAXIMUM GLAZING U-FACTOR	MINIMUM INSULATION R-VALUE			CEILING	WALLS	FLOORS	BASEMENT WALLS	CREAK SPACE WALLS
	ROOF	WALLS	FLOORS					
.15	R-26	R-13	R-11	R-5	R-5	R-5	R-5	R-5

### DESIGN CRITERIA

THE CONSTRUCTION FOR SAID RESIDENCE WHERE BASIC WIND SPEED IS 130 MPH PER HOUR, WIND EXPOSURE ZONE C, IS DESIGNED IN ACCORDANCE WITH AMERICAN FOREST AND PAPER ASSOCIATION (AF&PA) WOOD FRAME CONSTRUCTION MANUAL FOR ONE AND TWO FAMILY DWELLINGS (WFCM) 2001 EDITION AS WELL AS THE INTERNATIONAL RESIDENTIAL CODE (IRC) 2012 EDITION.



HEADER SUPPORTING	SIZE	OPENING WIDTH (FT)		
		12	24	36
ONE FLOOR (CENTER BEARING)	(2) 2x4	4'-4"	3'-11"	2'-6"
	(2) 2x6	6'-5"	4'-6"	3'-0"
	(2) 2x8	8'-11"	5'-4"	4'-8"
	(2) 2x10	9'-11"	7'-0"	5'-4"
	(2) 2x12	11'-6"	8'-11"	6'-7"
	(3) 2x6	10'-2"	7'-2"	5'-10"
	(3) 2x10	12'-5"	8'-4"	7'-2"
	(3) 2x12	14'-4"	10'-2"	8'-9"
	(4) 2x6	11'-6"	8'-3"	6'-4"
	(4) 2x10	14'-4"	10'-11"	8'-9"
TWO FLOORS ONLY (CENTER BEARING)	(2) 2x6	5'-4"	3'-11"	3'-9"
	(2) 2x8	6'-6"	4'-4"	3'-11"
	(2) 2x10	7'-6"	5'-6"	4'-7"
	(3) 2x6	6'-0"	4'-10"	4'-0"
MAXIMUM SPAN 16'-0"	(3) 2x10	8'-11"	6'-0"	4'-11"
	(3) 2x12	9'-5"	6'-11"	5'-4"
	(4) 2x6	7'-0"	5'-0"	4'-0"
	(4) 2x10	9'-4"	6'-10"	5'-8"
(4) 2x12	10'-10"	8'-0"	6'-7"	

SHEATHING LOCATION	RAFTERS / TRUSSES SPACING	MAX NAIL SPACING FOR 8d COMMON NAILS (INCHES OC)		
		E	F	F
INTERIOR ZONE	12" OC	6	12	12
	24" OC	6	12	12
PERIMETER EDGE ZONE	12" OC	6	6	12
	24" OC	6	6	6

SHEATHING LOCATION	STUD SPACING	MAX NAIL SPACING FOR 8d COMMON NAILS OR 10d BOX NAILS (INCHES OC)		
		E	F	F
INTERIOR ZONE	12" OC	6	12	12
	24" OC	6	12	12
PERIMETER EDGE ZONE	12" OC	6	6	12
	24" OC	6	6	12

FASTENER TYPE	FASTENER SPACING		
	PANEL SPAN 5' & 4'	4' PANEL SPAN	6' PANEL SPAN
2-1/2" #8 WOOD SCREWS	16"	12"	12"
1-1/2" #6 WOOD SCREWS	16"	12"	12"

DESCRIPTION	NUMBER OF NAILS	NUMBER OF BOX NAILS	SPACING
HEADERS TO HEADER (FACE NAILED)	8d	10d	6" OC EDGES 12" OC FIELD

HEADER SIZE	SPAN	NUMBER FULL HEIGHT STUDS REQ AT EA END			
		TWO	THREE	THREE	THREE
(2) 2x4	4'-1"	TWO	THREE	THREE	THREE
(2) 2x6	5'-6"	TWO	THREE	THREE	THREE
(2) 2x8	6'-11"	TWO	THREE	THREE	THREE
(2) 2x10	8'-9"	TWO	THREE	THREE	THREE
(2) 2x12	11'-1"	TWO	THREE	THREE	THREE
(3) 2x6	7'-5"	THREE	THREE	THREE	THREE
(3) 2x10	8'-9"	THREE	THREE	THREE	THREE
(3) 2x12	8'-7"	THREE	THREE	THREE	THREE
(4) 2x6	9'-6"	THREE	THREE	THREE	THREE
(4) 2x12	10'-0"	FOUR	THREE	THREE	THREE











HEADER SPACING (FT)	HEADER WIDTH		
	3"	4.5"	6.5"
2	1	1	1
4	1	1	1
6	2	1	1
8	2	2	2
10	3	2	2
12	3	2	2
14	4	3	2
16	4	3	2
2	1	1	1
4	1	1	1
6	2	2	2
8	2	2	2
10	3	3	3
12	3	3	3
14	4	3	3
16	4	3	3

FASTENER TYPE	FASTENER SPACING		
	PANEL SPAN 5' & 4'	4' PANEL SPAN	6' PANEL SPAN
2-1/2" #8 WOOD SCREWS	16"	12"	12"
1-1/2" #6 WOOD SCREWS	16"	12"	12"

**DAMMON ENGINEERING, INC.**  
LOUISIANA & MISSISSIPPI  
Chief Engineer: Brian Mistich, PE  
554 Old Spanish Trail  
Sudell, LA 70458  
www.dammonengineering.com  
info@dammonengineering.com  
PH: 985.649.5832 F: 985.641.5950

**SAFETY**  
SEAL: [Signature]  
DATE: 7/21/16  
JOB No: 2274 DATE: 07/21/2016  
DRAWN BY: JTL CHECKED BY: BAM

**5103**  
SHEET TITLE: TYPICAL CONNECTION DETAILS, SCHEDULES, AND NOTES  
DRAWING NUMBER: 5103  
6 OF 17