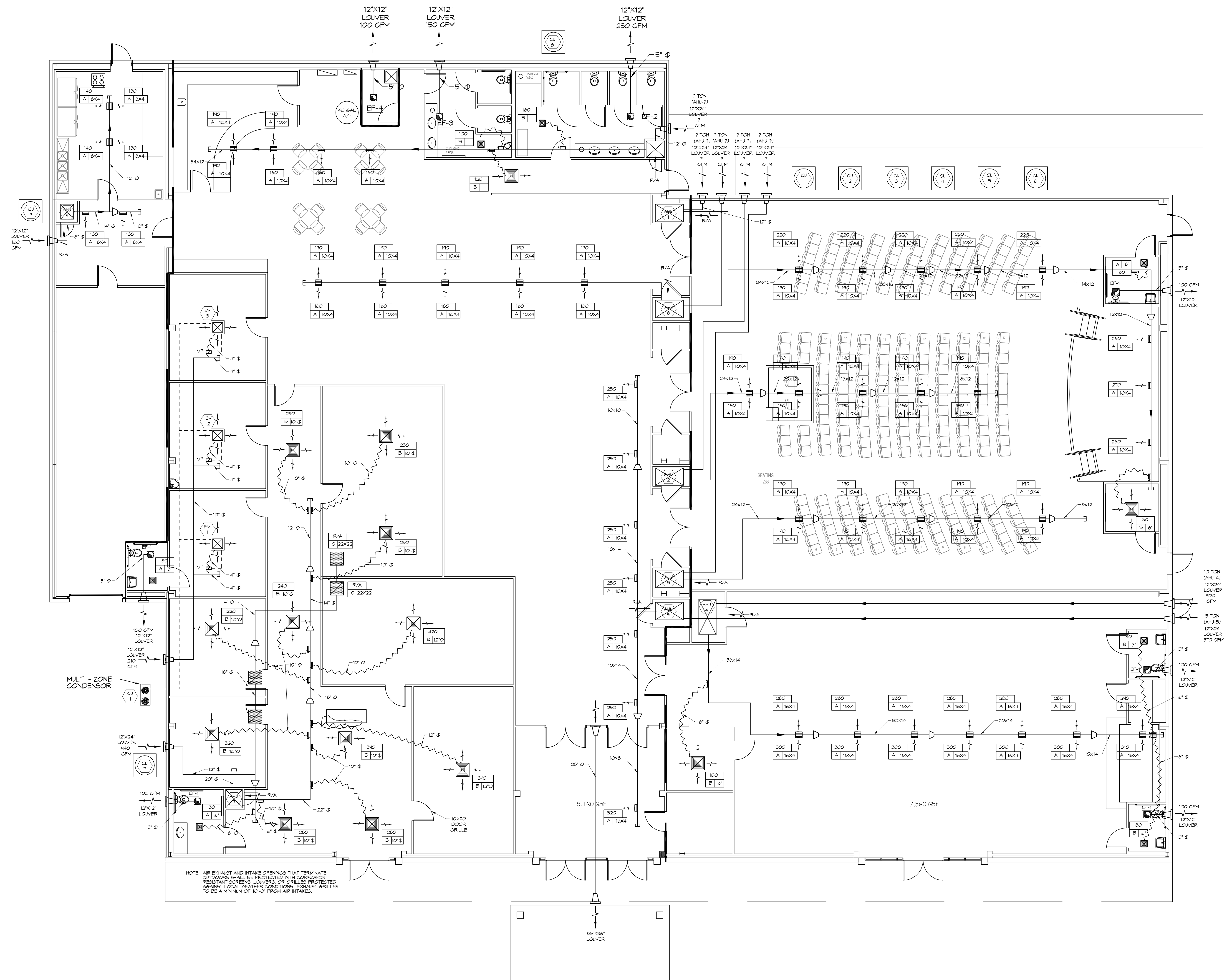


NOTE: AIR EXHAUST AND INTAKE OPENINGS THAT TERMINATE OUTDOORS SHALL BE PROTECTED WITH CORROSION RESISTANT SCREENS, LOUVERS, OR GRILLES PROTECTED AGAINST LOCAL WEATHER CONDITIONS. EXHAUST GRILLES TO BE A MINIMUM OF 10'-0" FROM AIR INTAKES.



NOTE: AIR EXHAUST AND INTAKE OPENINGS THAT TERMINATE OUTDOORS SHALL BE PROTECTED WITH CORROSION RESISTANT SCREENS, LOUVERS OR GRILLES PROTECTED AGAINST LOCAL WEATHER CONDITIONS. EXHAUST GRILLES TO BE A MINIMUM OF 10'-0" FROM AIR INTAKES.