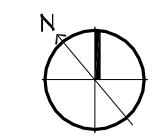
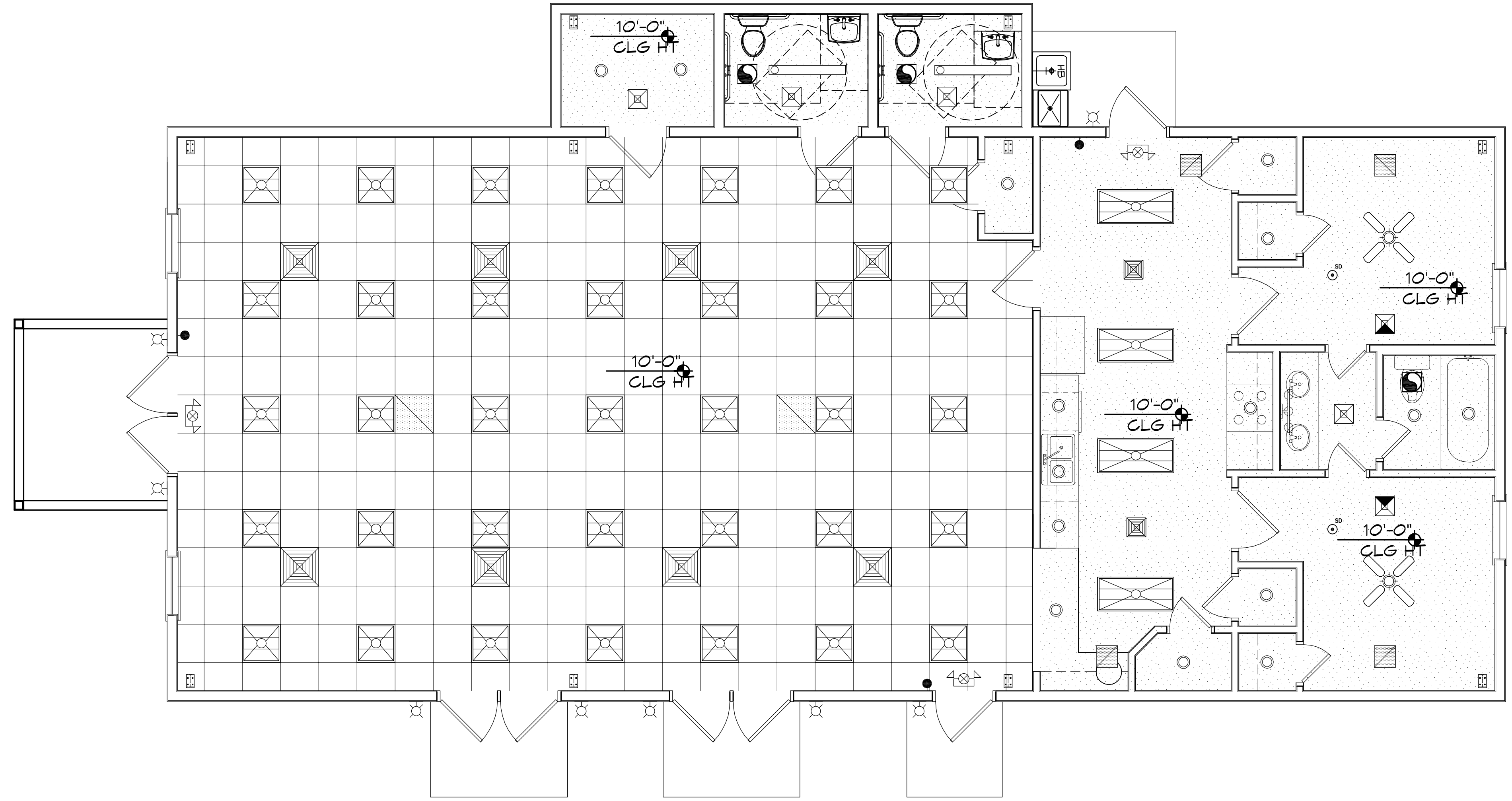


FILE NAME: \\s:\projects\150310 - 150310.dwg PLT: 150310.dwg PLOT DATE: 8/15/2020 9:14:01 AM



REFLECTED CEILING PLAN
SCALE: 1/4" = 1'-0"

LEGEND			
	AIR SUPPLY GRILLE (24X24)		RECESSED LIGHT
	RETURN AIR GRILLE		PENDANT LIGHT
	AIR SUPPLY GRILLE (12X12)		EXTERIOR WALL LIGHT
	EMERGENCY LIGHT		2X4 FLUORESCENT
			CEILING MOUNTED EXIT LIGHT
			VANITY LIGHT

DAMMON
ENGINEERING, INC.
LOUISIANA & MISSISSIPPI

Chief Engineer: Brian Mistich, PE
554 Old Spanish Trail
Slidell, LA 70668
www.dammonengineering.com
info@dammonengineering.com
PH: 985.649.5632

REVISIONS	DATE	DESCRIPTION
#		

SEAL:

BAM

MULTI PURPOSE BUILDING

**OUR LADY OF FA
T I M A**

68110 VORTSCH ROAD
LACOMBE, LOUISIANA 70445

JOB NO: 07-15-2020
DATE: 07-15-2020
DRAWN BY: RLD
CHECKED BY: CKD

SHEET TITLE:
REFLECTED CEILING PLAN

DRAWING NUMBER:
A102