

LIFE-SAFETY INFORMATION	
APPLICABLE CODES	
NFPA 101 LIFE-SAFETY CODE 2015	
OCCUPANCY TYPE(S) AND CHAPTER(S)	
ASSEMBLY (CHAPTER 12)	
MULTIPLE, MIXED, OR SEPARATE OCCUPANCY (REFERENCE CHAPTER 6)	
N/A	
OCCUPANT LOAD FACTOR	(REFERENCE TABLE 7.3.1.2)
2,100 SF 15 SF PER OCC	140 OCCUPANTS
CLASSIFICATION OF HAZARD OF CONTENTS	
(REFERENCE: OCCUPANCY CHAPTER AND 6.2.2. SPECIFY LOW, ORDINARY, OR HIGH)	
CONSTRUCTION TYPE(S) (REFERENCE: CHAPTERS, TABLE A.9.2.1.2 AND COMMENTARY TABLE 8.1 IN HANDBOOK)	
II(222)	
MINIMUM EXIT SEPARATION DISTANCE FOR REMOTELY LOCATED EXITS	
(REFERENCE: SECTION 7.5; SPECIFY 1/2 OR 1/3 DIAGONAL DISTANCE OF AREA SERVED)	
1/2 DIAGONAL = 51'-1"	
MAXIMUM DEAD-END CORRIDORS (REFERENCE: OCCUPANCY CHAPTER AND TABLE A.7.6)	
20 FEET	
MAXIMUM COMMON PATH OF TRAVEL DISTANCE (REFERENCE: OCCUPANCY CHAPTER AND TABLE A.7.6)	
20 FEET/75 FEET	
MAXIMUM TRAVEL DISTANCE TO EXITS (REFERENCE: OCCUPANCY CHAPTER AND TABLE A.7.6)	
200 FEET	
*MAIN ENTRANCE MUST BE SIGNED TO ACCOMMODATE 1/2 OCCUPANT LOAD OF BUILDING	
EXTINGUISHMENT REQUIREMENTS NOT SPRINKLERED (NOT REQUIRED)	
DETECTION, ALARM, AND COMMUNICATION SYSTEMS NO	
ALLOWABLE HEIGHT AND BUILDING AREA PER IBC EQUIVALENT CONSTRUCTION TYPE	

BUILDING CODE INFORMATION	
APPLICABLE CODES	
IBC 2015	
ASSEMBLY GROUP AS (IBC 2012 CHAPTER 13)	
OCCUPANT LOAD CALCULATIONS (TABLE 1004.1.2)	
ASSEMBLY (LESS CONCENTRATED USE, WITHOUT FIXED SEATING) 15 SF PER OCCUPANT (NET) 140 OCCUPANTS	
CONSTRUCTION TYPE(S) (TABLE 503)	
II(B) (SECTION 503)	
ALLOWABLE HEIGHT AND BUILDING AREA LIMITED BY TYPE OF CONSTRUCTION	
MAXIMUM HEIGHT IN STORIES (SECTION 503 & 504, TABLE 503) 2	
MAXIMUM AREA IN SQUARE FEET (SECTION 503, 506 & 507, TABLE 503) 9,500 SF	

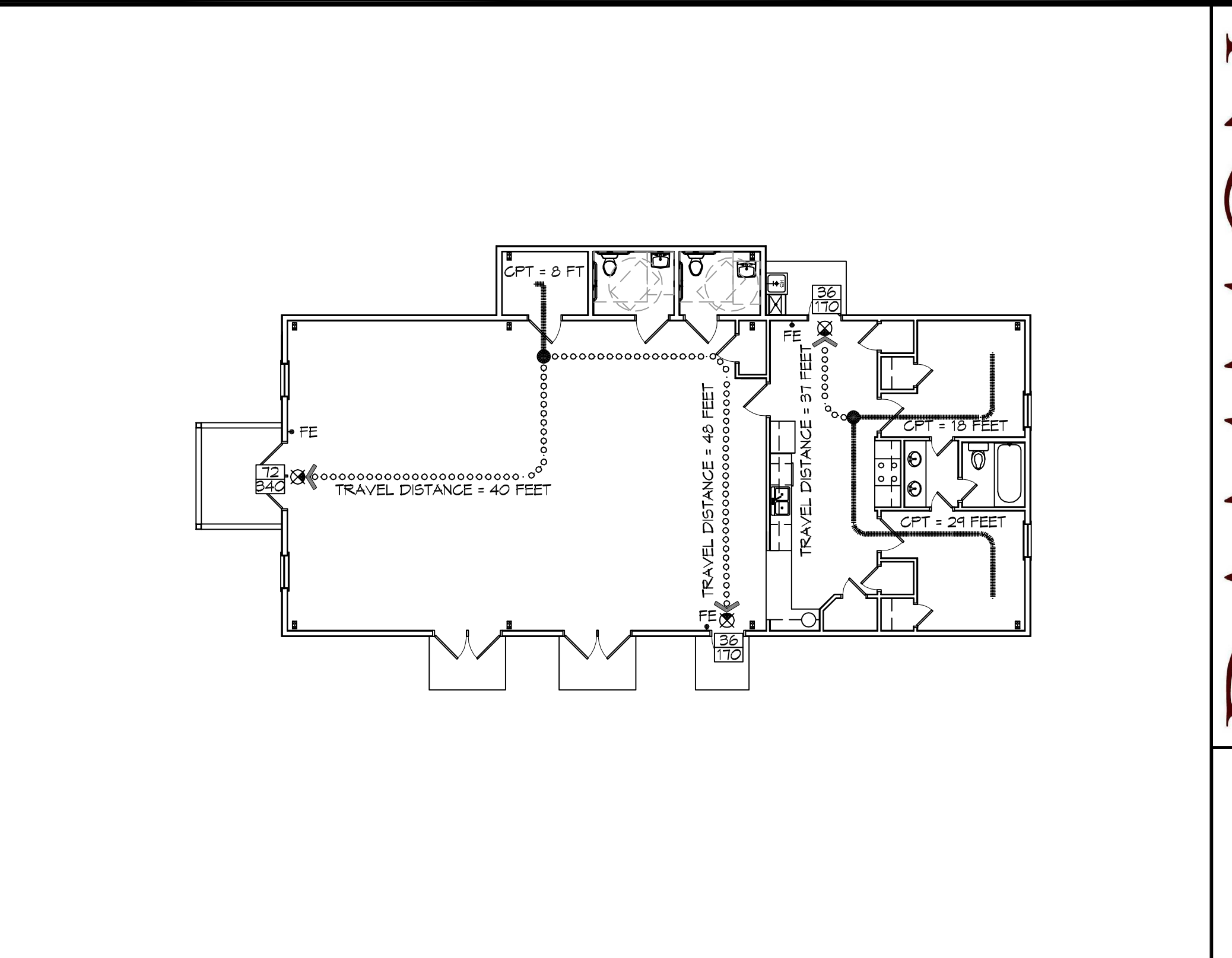
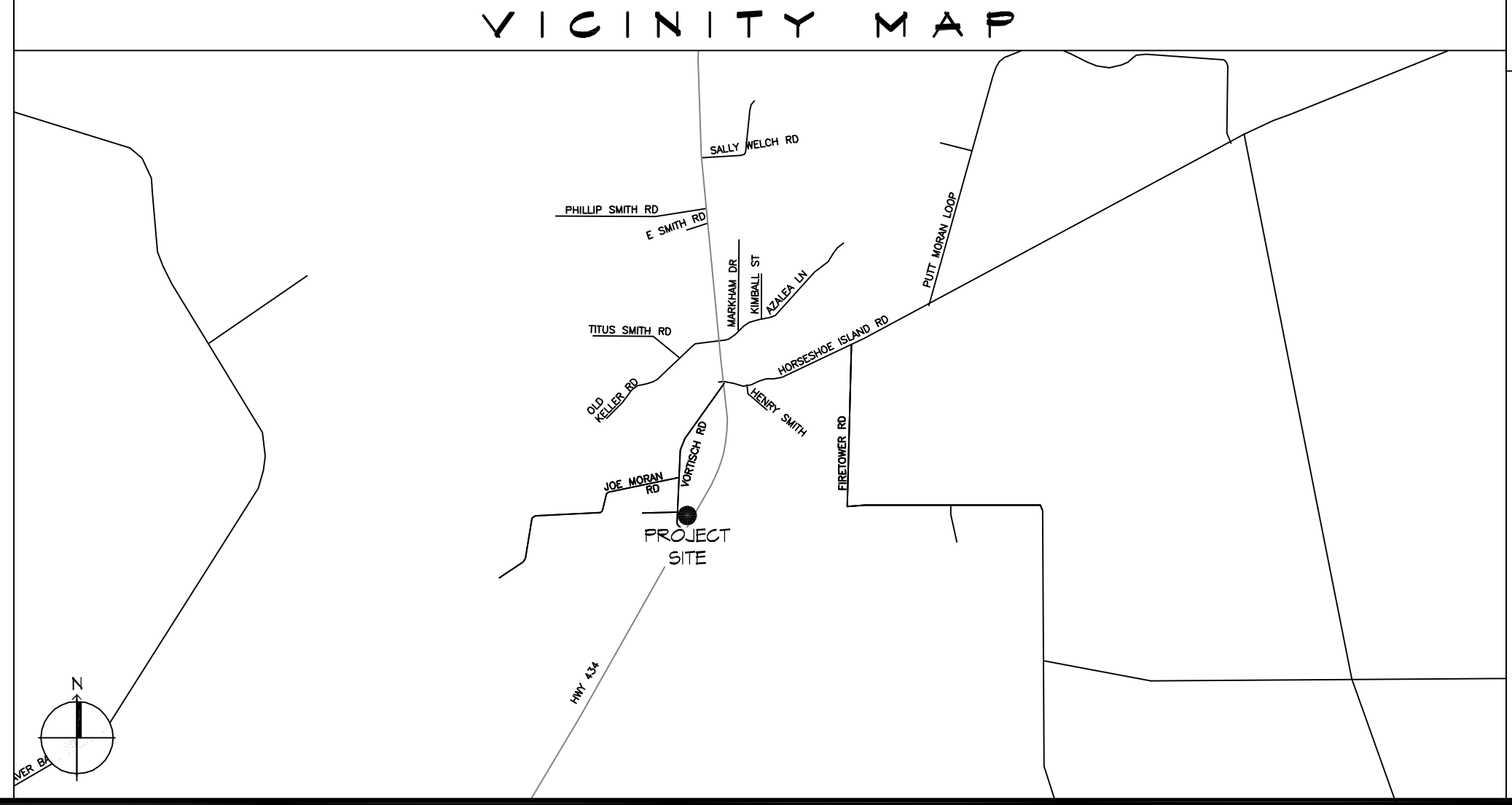
WIND SPEED DESIGN REQUIREMENTS	
THIS BUILDING SHALL BE DESIGNED WITH IBC SEC 1609 AS A FULLY ENCLOSED BLDG USING THE FOLLOWING INFORMATION:	
WIND DESIGN DATA:	
DETERMINATION OF WIND LOADS SHALL BE IN ACCORDANCE WITH IBC SEC 1609.3 (A), (B), OR (C) DEPENDING ON THE RISK CATEGORY	
BASIC WIND SPEED (3 SECOND GUST) = 137 MPH (IBC FIG 1609C)	
RISK FACTOR:	CATEGORY I BLDG SURFACE ROUGHNESS = B
TOPOGRAPHIC FACTOR = 1	EXPOSURE = B
DESIGN WIND PRESSURE (ASCE 7-10 TABLE 26.6-1):	31.4 PSF
INTERNAL PRESSURE COEFFICIENT (ASCE 7-10 TABLE 26.11-1):	± 0.18
LIVE LOADS (IBC SEC 1607)	
ASSEMBLY FIXED SEATING (IBC TABLE 1607.1):	60 PSF
PLATFORMS (ASSEMBLY) (IBC TABLE 1607.1):	100 PSF
LOBBIES (IBC TABLE 1607.1):	100 PSF
STORAGE, LIGHT (IBC TABLE 1607.1):	125 PSF
ROOF LIVE LOADS (IBC TABLE 1607.1):	20 PSF UNIFORM, 300 LB CONCENTRATED
SNOW LOADS (IBC TABLE 1608):	
GROUND SNOW LOAD (IBC FIG 1608.2):	5 PSF

FLOOD ZONE INFORMATION			
BASED ON THE SURVEY OF THIS PROPERTY BY J.V. BURKES AND ASSOCIATES, INC. THIS PROPERTY IS IN A SPECIAL FLOOD HAZARD AREA. F.I.R.M. COMMUNITY MAP NO 225205 0275 C; REVISED 10/11/1984			
FLOOD ZONE:	C & A	BASE FLOOD ELEVATION	N/A
ELEVATIONS REFER TO NGVD 1929 DATUM			

PROJECT STATISTICS	
SQUARE FOOTAGE	
NEW BUILDING	2,100 SF
TOTAL ENCLOSED SPACE	2,100 SF

**FOUR LADY OF FATIMA**  
**MULTIPURPOSE BUILDING**  
**LACOMBE LOUISIANA**

LIFE-SAFETY LEGEND	
SYMBOL	DESCRIPTION
>	EXITS
(45)	DOOR FIRE RATING (MINUTES)
3/4	DOOR WIDTH/EGRESS CAPACITY
☒	EXIT LIGHT
FE	FIRE EXTINGUISHER AND CABINET
★ FE	FIRE EXTINGUISHER W/ WALL MTD BRACKET
-----	COMMON PATH OF TRAVEL
o-o-o-o-o-o-o-o	TRAVEL DISTANCE
●	DECISION POINT
-----	SMOKE PARTITION
-----	ONE-HOUR FIRE RATED PARTITION
-----	TWO-HOUR FIRE RATED PARTITION
-----	TWO-HOUR FIRE/SMOKE PARTITION
-----	FOUR-HOUR RATED PARTITION



**LIFE-SAFETY PLAN**  
 SCALE: 3/32" = 1'-0"

REVISIONS	
#	DESCRIPTION

SHEET INDEX	
SHEET #	SHEET TITLE
0001	GENERAL PROJECT, LIFE-SAFETY AND CODE INFORMATION
0002	ACCESSIBILITY INFORMATION
C101	SITE PLAN
C102	SITE DRAINAGE PLAN
C103	SITE UTILITY PLAN/EROSION CONTROL
A101	FLOOR PLAN
A102	REFLECTED CEILING PLAN
A103	EXTERIOR ELEVATIONS
P101	PLUMBING FLOOR PLAN
M101	MECHANICAL FLOOR PLAN, DETAILS AND SCHEDULES
E101	ELECTRICAL FLOOR PLAN - Poyer AND LIGHTING
E102	ELECTRICAL PANEL AND ONE LINE DIAGRAM

GENERAL NOTES	
1.	ALL MATERIALS AND WORK, INCIDENTAL TO THE CONSTRUCTION OF THIS PROJECT, SHALL CONFORM TO ALL GOVERNING CODES, AND REGULATIONS OF AGENCIES IN AUTHORITY.
2.	CONTRACTOR SHALL PROVIDE ALL PUBLIC PROTECTIONS NECESSARY AS REQUIRED BY LAW.
3.	THE DRAWINGS, SPECIFICATIONS AND ANY SUBSEQUENTLY ISSUED ADDENDA, AMENDMENTS OR SUCH CHANGE ORDERS APPROVED BY THE OWNER AND THE CONTRACTOR ARE PART OF THESE CONTRACT DOCUMENTS.
4.	<b>DO NOT SCALE DRAWINGS.</b> CONSULT WITH THE ARCHITECT REGARDING ANY ITEMS IN THE CONTRACT DOCUMENTS THAT REQUIRE CLARIFICATION.
6.	TRASH SHALL BE REMOVED FROM THE SITE NOT LESS THAN TWICE MONTHLY.
7.	THE GENERAL CONTRACTOR SHALL VERIFY EXISTING CONDITIONS PRIOR TO COMMENCING WORK AND REPORT ANY AND ALL DISCREPANCIES TO THE ARCHITECT.
8.	CONTRACTOR VEHICLES AND EQUIPMENT NECESSARY FOR CONSTRUCTION MAY BE PARKED ON THE SITE. OTHER VEHICLES PARKED ON THE SITE REQUIRE THE OWNER'S PERMISSION.
10.	NAMING A CERTAIN BRAND, MAKE OR MANUFACTURER IS TO DESIGNATE THE GENERAL STYLE, TYPE, CHARACTER AND QUALITY STANDARD OF THE PRODUCT DESIRED. SUBSTITUTION REQUESTS MUST BE SUBMITTED PRIOR TO BIDDING.
11.	ALL MATERIALS/EQUIPMENT SHALL BE INSTALLED PER MANUFACTURER'S RECOMMENDATIONS. WORK NOT CONSISTENT WITH MANUFACTURER'S RECOMMENDATIONS WILL BE REJECTED BY OWNER/ARCHITECT.

**DAMMON**  
**ENGINEERING, INC.**  
 LOUISIANA & MISSISSIPPI

Chief Engineer: Brian Mitchen, PE  
 554 Old Spanish Trail  
 Slidell, LA 70688  
 www.dammonengineering.com  
 info@dammonengineering.com  
 PH: 905.649.9532

REVISIONS	
#	DESCRIPTION

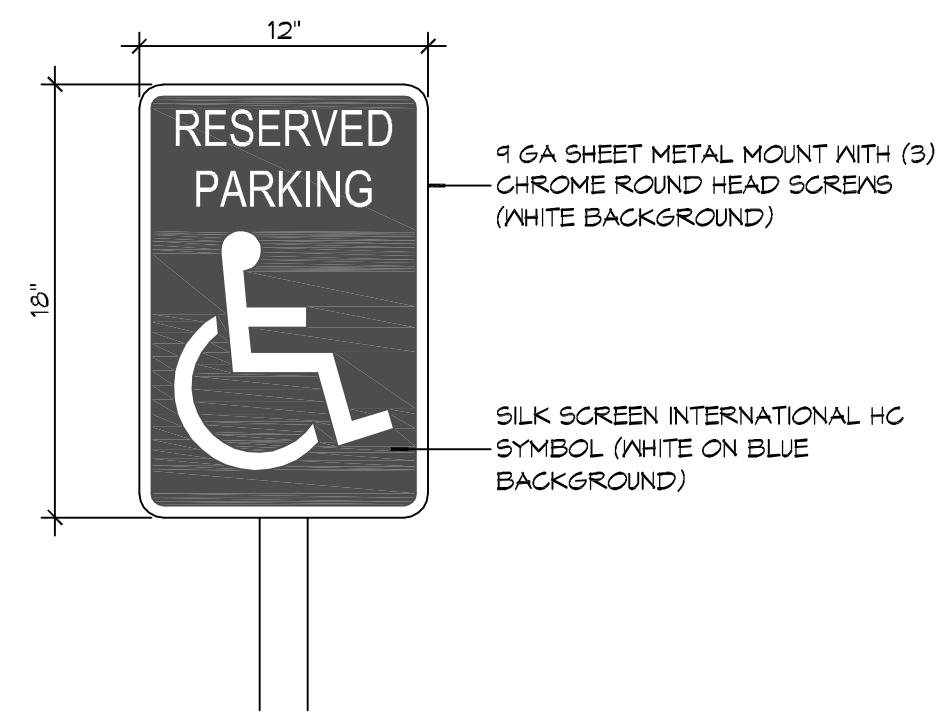
SEAL:

**FOUR LADY OF FATIMA**  
**MULTIPURPOSE BUILDING**

**GENERAL PROJECT, LIFE-SAFETY, AND BUILDING CODE INFORMATION**

DRAWING NUMBER:  
**0001**

SHEET No: 1 of 12



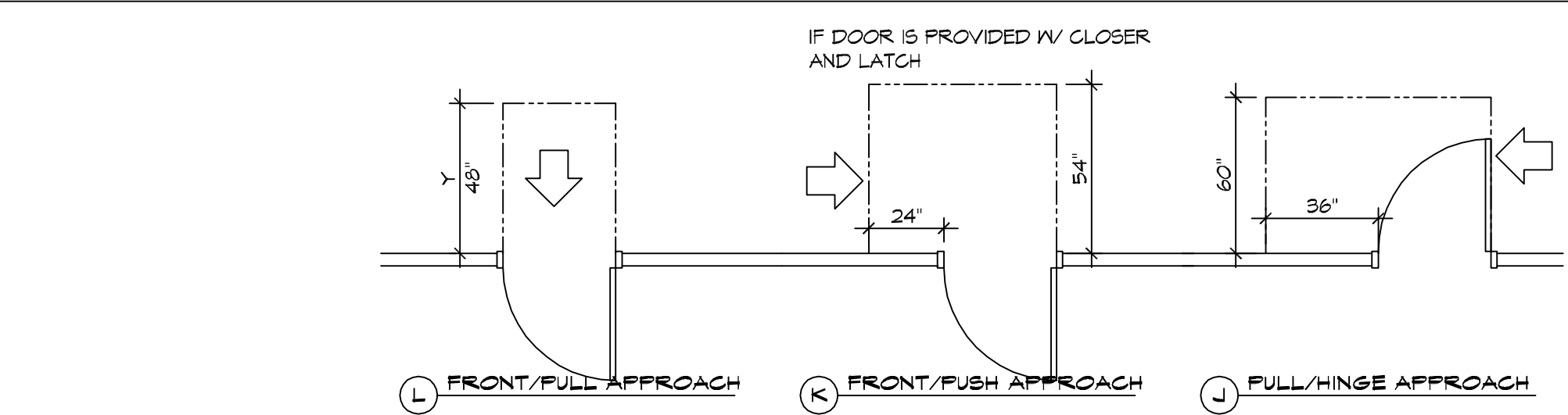
9 GA SHEET METAL MOUNT WITH (3) CHROME ROUND HEAD SCREWS (WHITE BACKGROUND)

SILK SCREEN INTERNATIONAL HC SYMBOL (WHITE ON BLUE BACKGROUND)

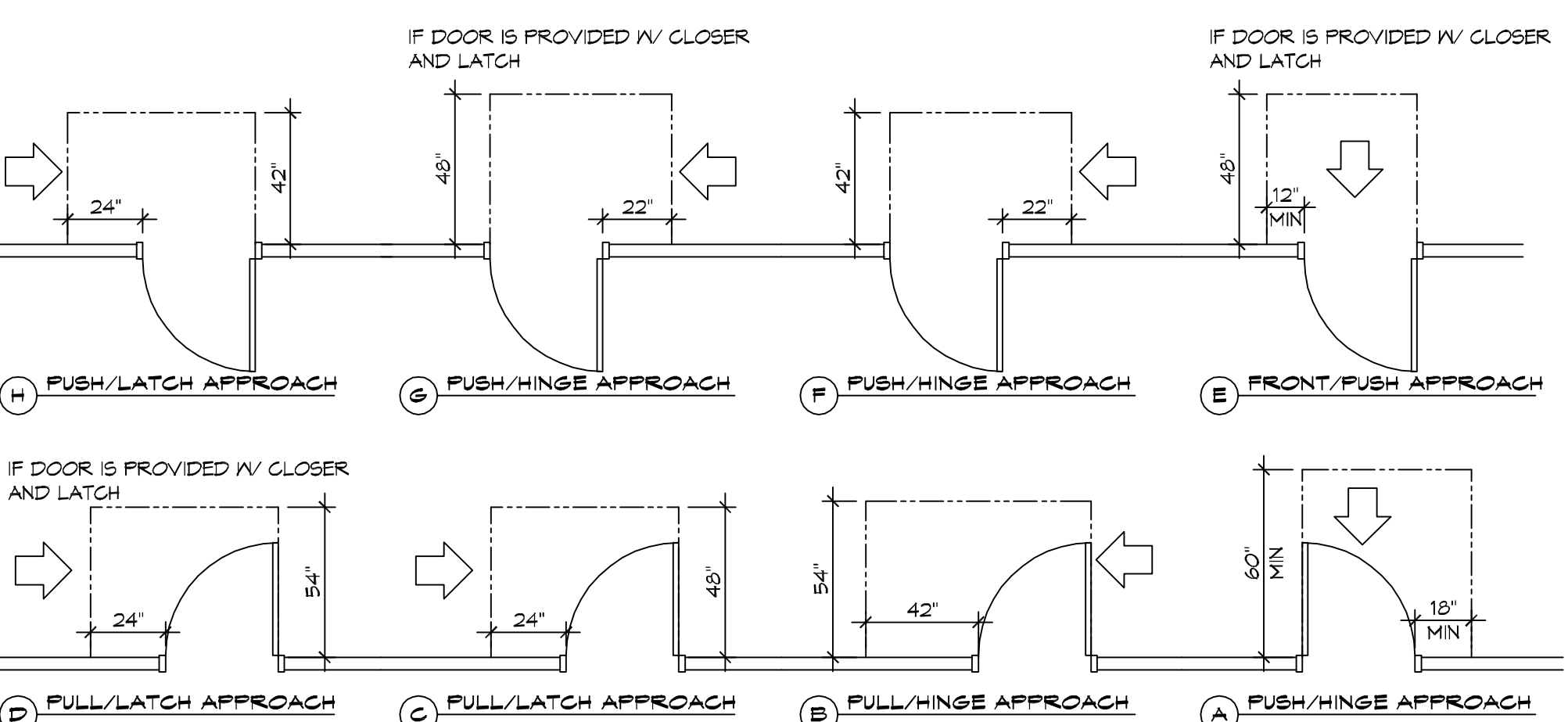
2X2 STEEL TUBE - CLOSE TOP END AND GRIND SMOOTH- PAINT WHITE

CONCRETE BASE TO BE CENTERED ON ACCESSIBLE PARKING SPACE (TYP)

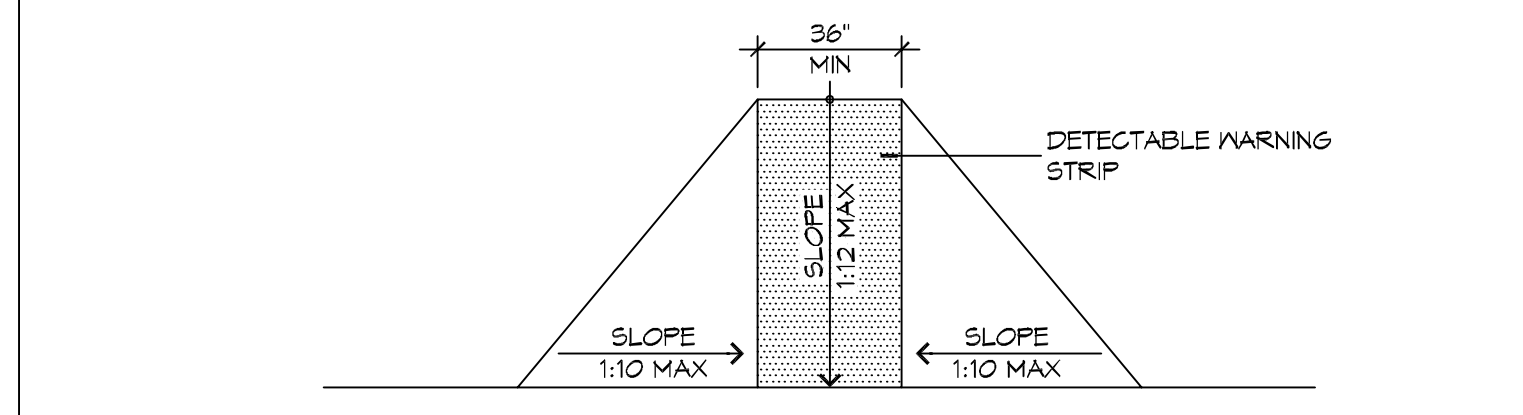
**5 ACCESSIBLE SIGN**  
SCALE: NTS



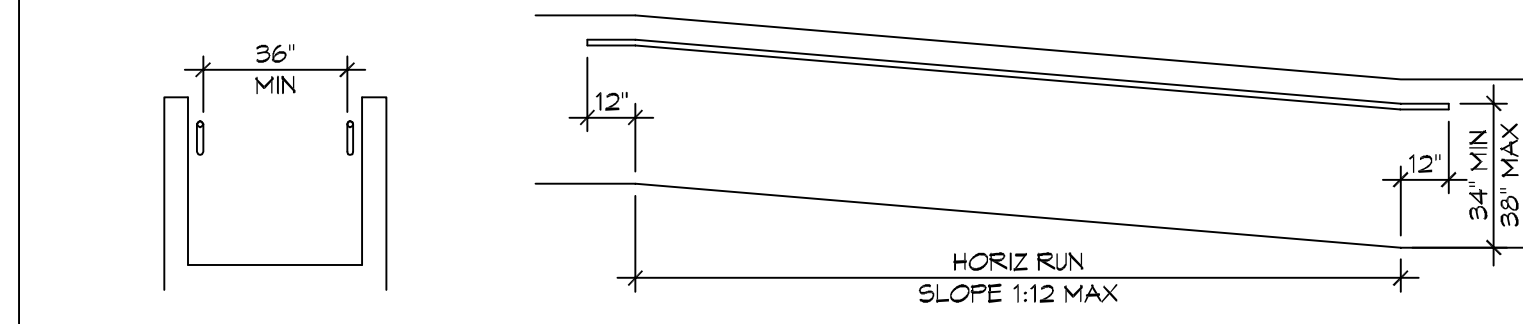
L FRONT/FULL APPROACH K FRONT/PUSH APPROACH J FULL/HINGE APPROACH



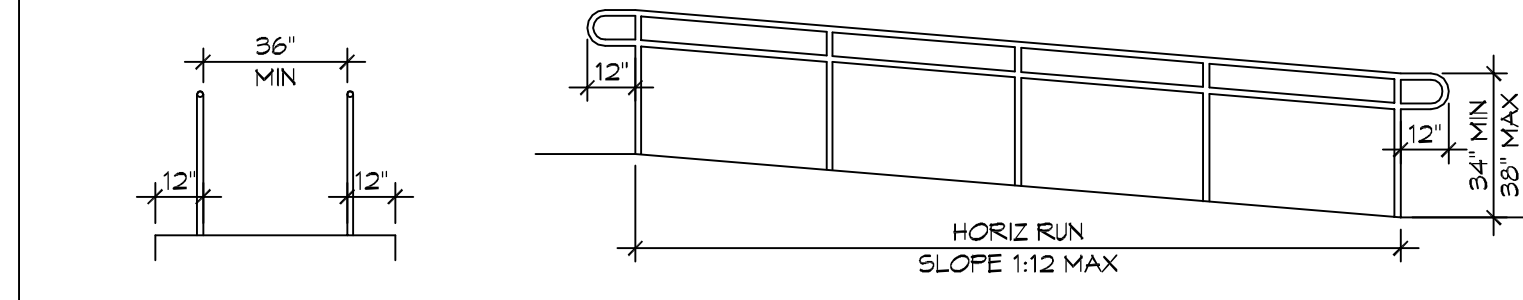
**3 ADA DOOR CLEARANCES**  
SCALE: 1/4" = 1'-0"



F FLARED RAMPS

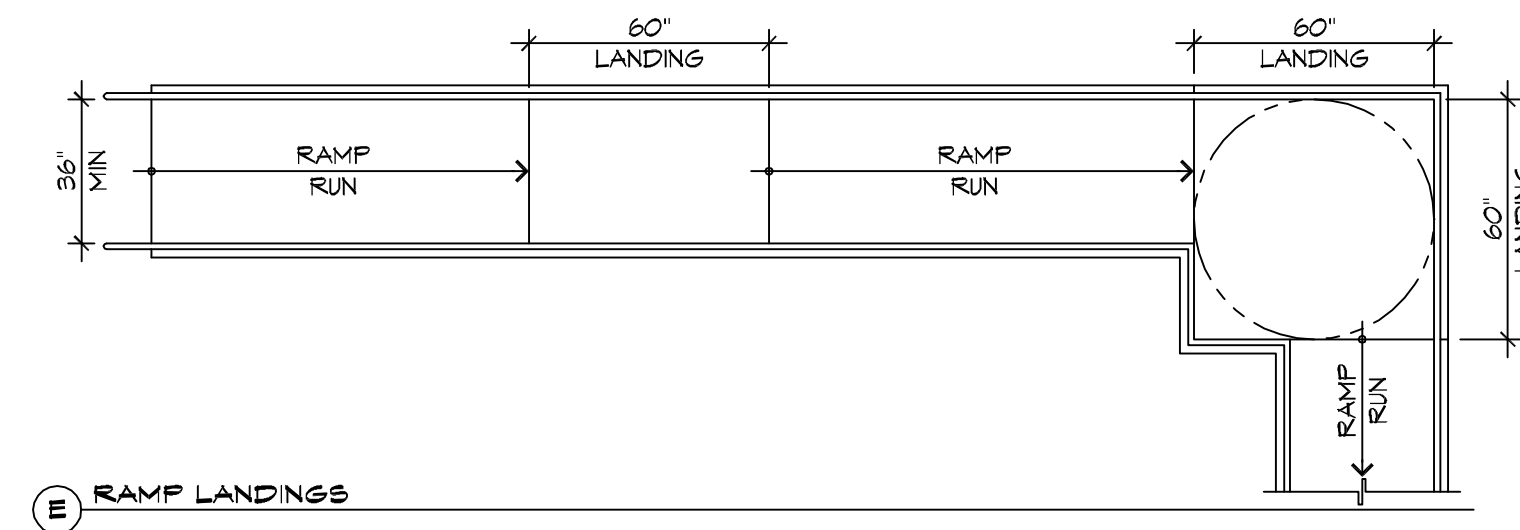


D WALL EDGE PROTECTION

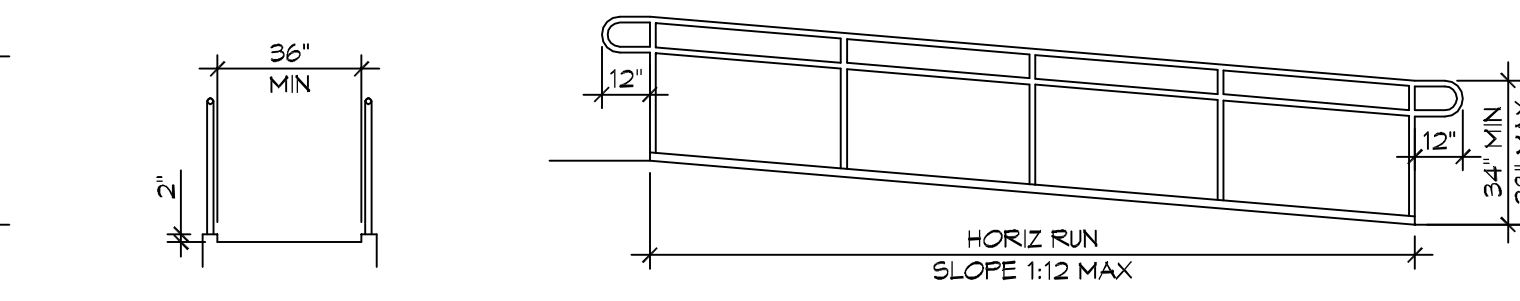


B EXTENDED SURFACE EDGE PROTECTION

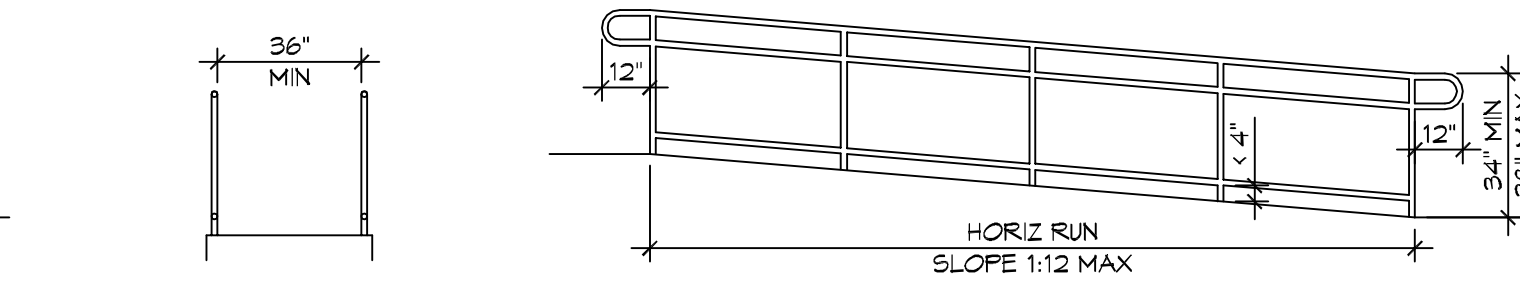
**4 ACCESSIBLE RAMPS**  
SCALE: 1/4" = 1'-0"



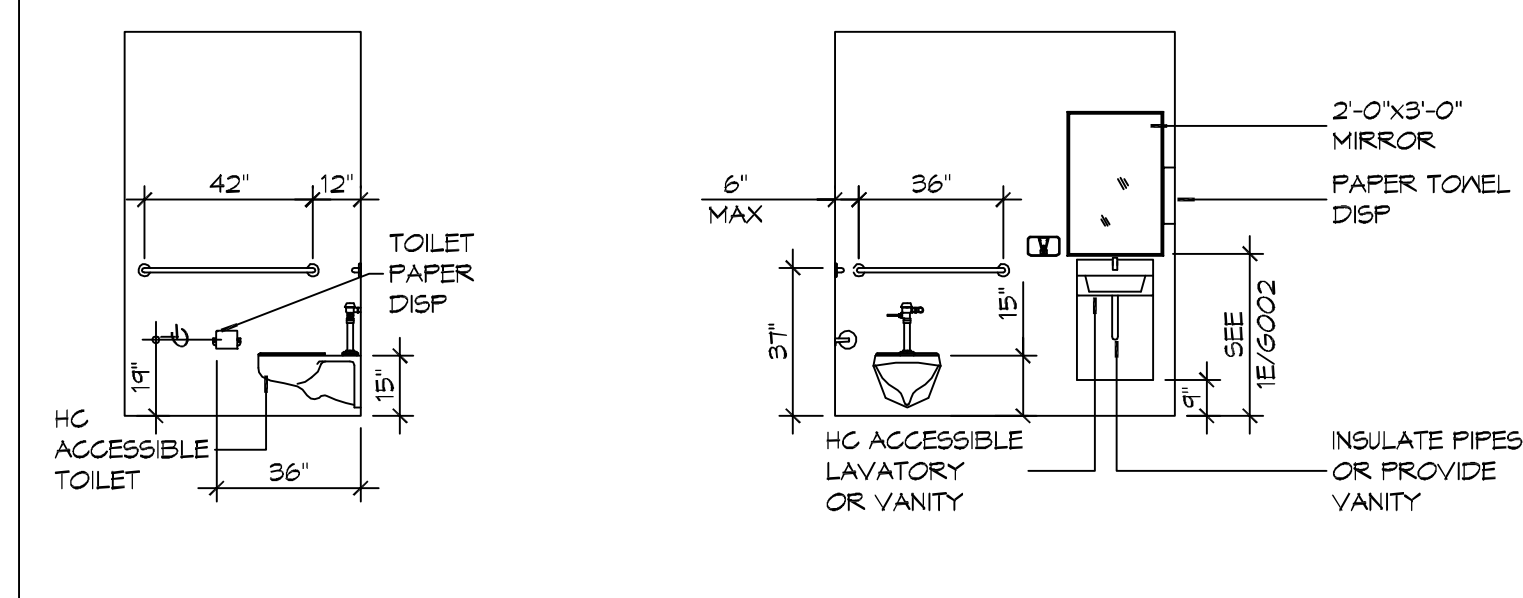
E RAMP LANDINGS



C CURB EDGE PROTECTION

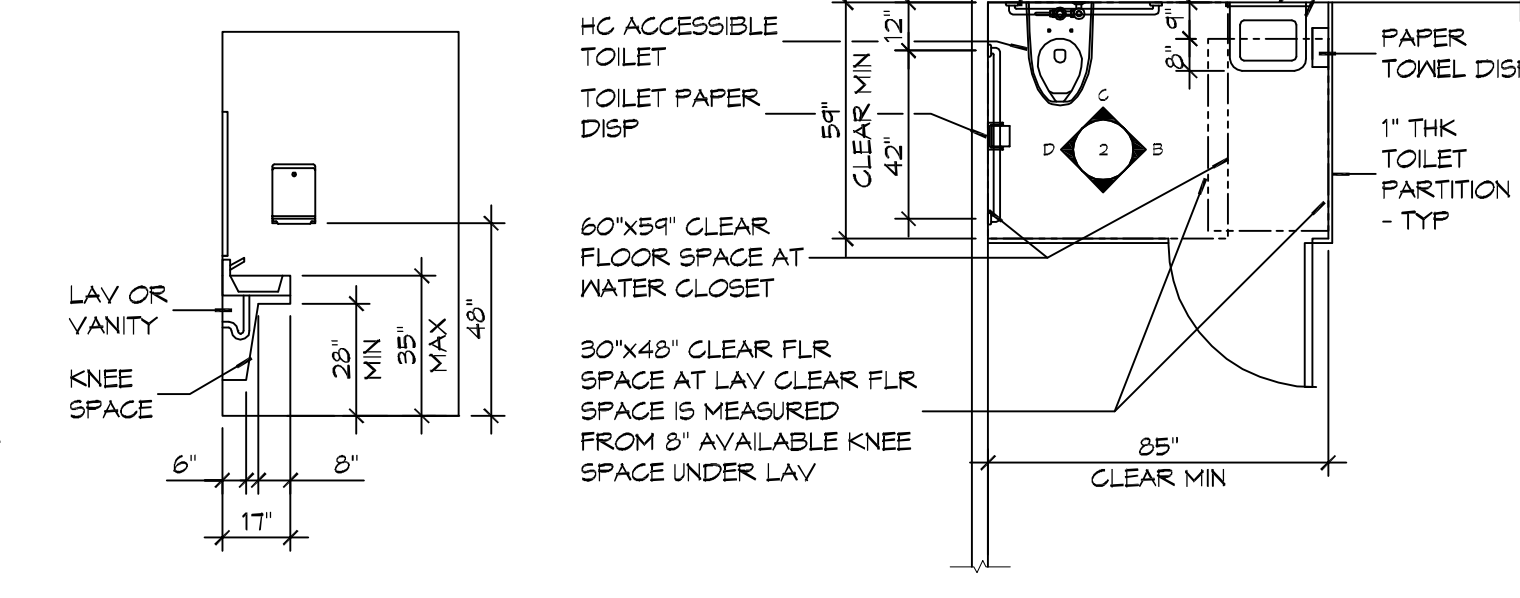


A BARRIER EDGE PROTECTION

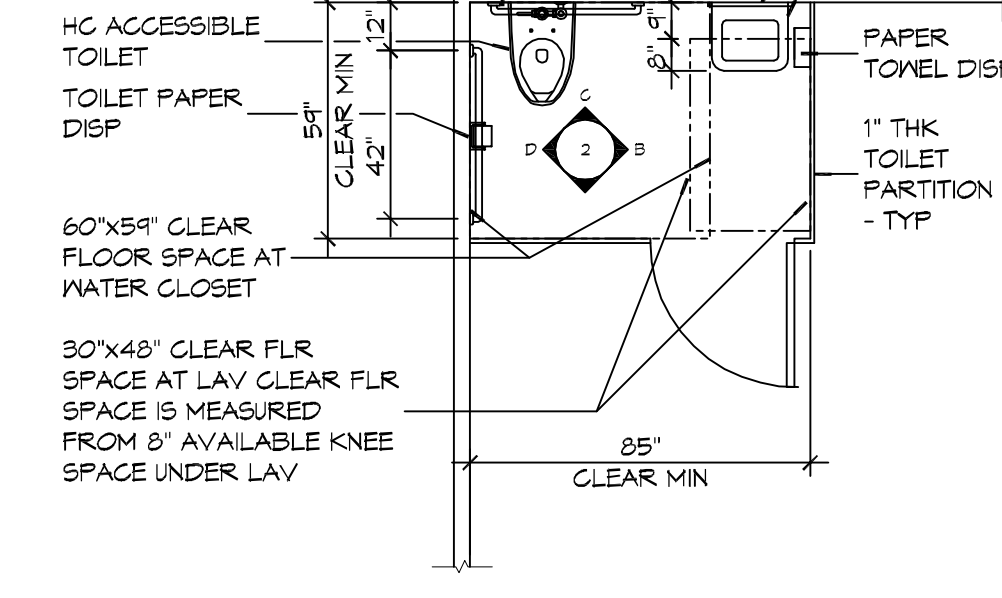


D INTERIOR ELEVATION

C INTERIOR ELEVATION



B INTERIOR ELEVATION



A FLOOR PLAN

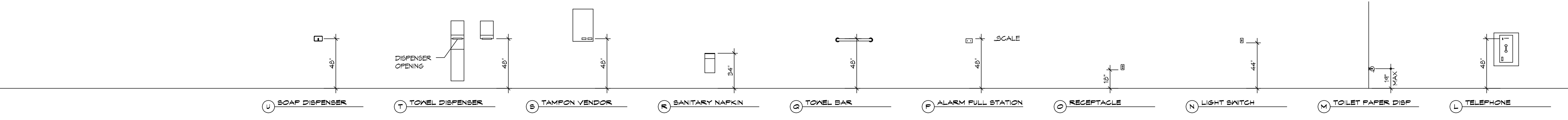
**2 RESTROOM CLEARANCES**  
SCALE: 1/4" = 1'-0"

**ACCESSIBILITY NOTES**

**DOOR CLEARANCE NOTES**  
ALCOVES SHALL COMPLY WITH THE CLEARANCES FOR FRONT APPROACHES. 3/6002 - 3K/6002.  
DOOR HARDWARE SHALL BE LEVER TYPE.  
MAX DOOR OPENING FORCE:  
INTERIOR HINGED DOORS: 5 LBF  
EXTERIOR HINGED DOORS: 8.5 LBF  
SLIDING OR FOLDING DOORS: 5 LBF  
FIRE DOORS SHALL HAVE THE MINIMUM OPENING FORCE ALLOWABLE BY THE APPROPRIATE ADMINISTRATIVE AUTHORITY.  
HARDWARE REQUIRED FOR ACCESSIBLE DOOR PASSAGE SHALL BE MOUNTED NO HIGHER THAN 48" AND NOT LESS THAN 34" ABOVE FINISHED FLOOR.  
THE FLOOR OR GROUND AREA WITHIN THE REQUIRED CLEARANCES SHALL BE LEVEL AND CLEAR.  
THRESHOLDS AT DOORWAYS SHALL NOT EXCEED 3/4" IN HEIGHT FOR EXTERIOR SLIDING DOORS OR 1/2" FOR OTHER TYPES OF DOORS. RAISED THRESHOLDS AND FLOOR LEVEL CHANGES AT ACCESSIBLE DOORWAYS SHALL BE BEVELED WITH A SLOPE NO GREATER THAN 1:2.  
DOORWAYS SHALL HAVE A MINIMUM CLEAR OPENING OF 32" WITH THE DOOR OPEN 90°, MEASURED BETWEEN THE FACE OF THE DOOR AND THE OPPOSITE STOP. OPENINGS MORE THAN 24" IN DEPTH SHALL MAINTAIN 32" MIN CLEARANCE.  
**RAMP NOTES**  
THE CLEAR SPACE BETWEEN THE HANDRAIL AND THE WALL SHALL BE MIN 1-1/2" CLEAR.  
GRIPPING SURFACES SHALL BE CONTINUOUS AND UNOBSTRUCTED.  
ENDS OF HANDRAILS SHALL BE EITHER ROUNDED OR RETURNED SMOOTHLY TO FLOOR, WALL, OR POST.  
HANDRAILS SHALL NOT ROTATE WITHIN THEIR FITTINGS.  
THE CROSS SLOPE OF RAMP SURFACES SHALL BE NO GREATER THAN 1:50.  
OUTDOOR RAMPS AND THEIR APPROACHES SHALL BE DESIGNED SO THAT WATER WILL NOT ACCUMULATE ON WALKING SURFACES.  
RAMPS AND LANDINGS WITH DROP-OFFS SHALL HAVE CURBS, WALLS, RAILINGS, OR PROJECTING SURFACES THAT PREVENT PEOPLE FROM SLIPPING OFF THE RAMP. CURBS SHALL BE A MINIMUM OF 2" HIGH.  
HANDRAILS SHALL BE PROVIDED ALONG BOTH SIDES OF RAMP SEGMENTS. THE INSIDE HANDRAIL ON SWITCHBACK OR DOGLEG RAMPS SHALL ALWAYS BE CONTINUOUS.  
RAMP LANDINGS SHALL BE AT LEAST AS WIDE AS THE RAMP RUN LEADING TO IT.

**GENERAL SITE ACCESSIBILITY NOTES**

1. ACCESSIBILITY SIGNAGE SHALL COMPLY WITH ADAAG 2010 GUIDELINES SECTION 303.1.
2. SEE SHEET 0003 FOR ACCESSIBLE RAMP AND HANDRAIL DESIGNS WHERE THEY OCCUR.
3. ALL ACCESSIBLE PARKING SPACES AND AISLES THAT SERVE THEM SHALL COMPLY WITH ADAAG 2010 GUIDELINES SECTIONS 502.4 AND 502.5.
4. OPENINGS IN GROUND SURFACES SHALL COMPLY WITH ADAAG 2010 GUIDELINES SECTION 302.3.
5. VERTICAL CHANGES IN ELEVATION ALONG ALL ACCESSIBLE ROUTES SHALL COMPLY WITH ADAAG 2010 GUIDELINES SECTIONS 303.2, 303.3, AND 303.4.
6. PARKING SPACES DESIGNATED AS ACCESSIBLE SHALL INCLUDE THE INTERNATIONAL SYMBOL OF ACCESSIBILITY COMPLYING WITH ADAAG 2010 GUIDELINES SECTIONS 303.7.2.1 AND 502.6.
7. ALL ACCESSIBLE PARKING SPACES AND ROUTES SERVING THEM SHALL HAVE A ROUGH, SLIP-RESISTANT SURFACE OR LIGHT BROOM FINISH IN COMPLIANCE WITH ADAAG 2010 GUIDELINES SECTION 302.1.



U SOAP DISPENSER

T TOWEL DISPENSER

B TAMPON VENDOR

R SANITARY NAPKIN

Q TOWEL BAR

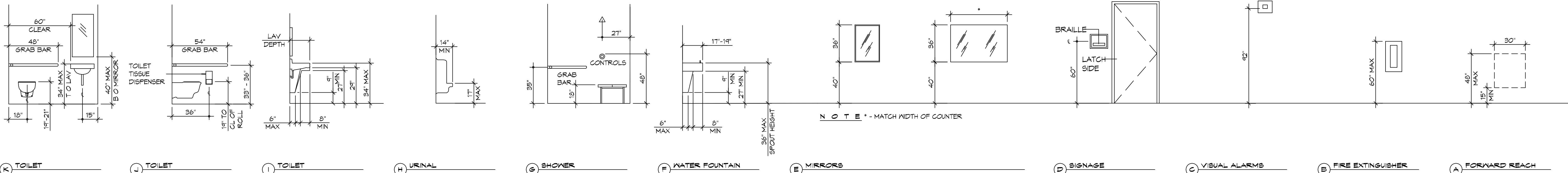
P ALARM PULL STATION

O RECEPTACLE

N LIGHT SWITCH

M TOILET PAPER DISP

L TELEPHONE



K TOILET

J TOILET

I TOILET

H URINAL

G SHOWER

F WATER FOUNTAIN

E MIRRORS

D SIGNAGE

C VISUAL ALARMS

B FIRE EXTINGUISHER

A FORWARD REACH

**1 MOUNTING HEIGHTS**  
SCALE: 1/4" = 1'-0"

**DAMMON ENGINEERING, INC.**  
LOUISIANA & MISSISSIPPI  
www.dammonengineering.com  
594 Old Spanish Trail  
Slaterside, LA 70088  
Chief Engineer: Brian A. Mitchell, PE  
Info@dammonengineering.com  
PH: 985.649.9532

REVISIONS	DATE	DESCRIPTION

SEAL:

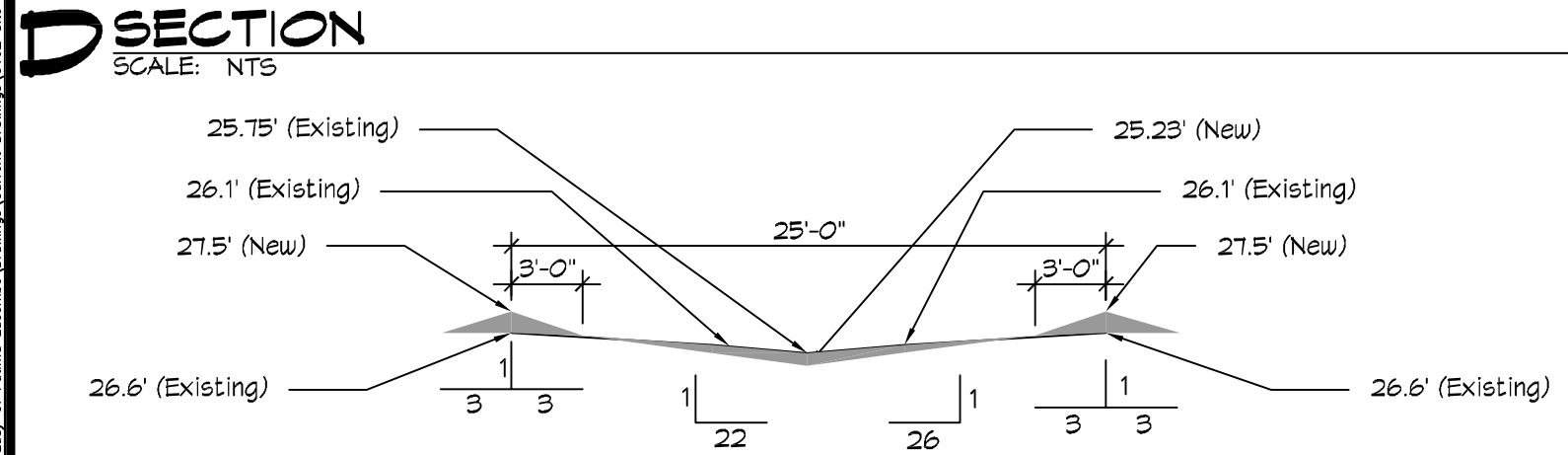
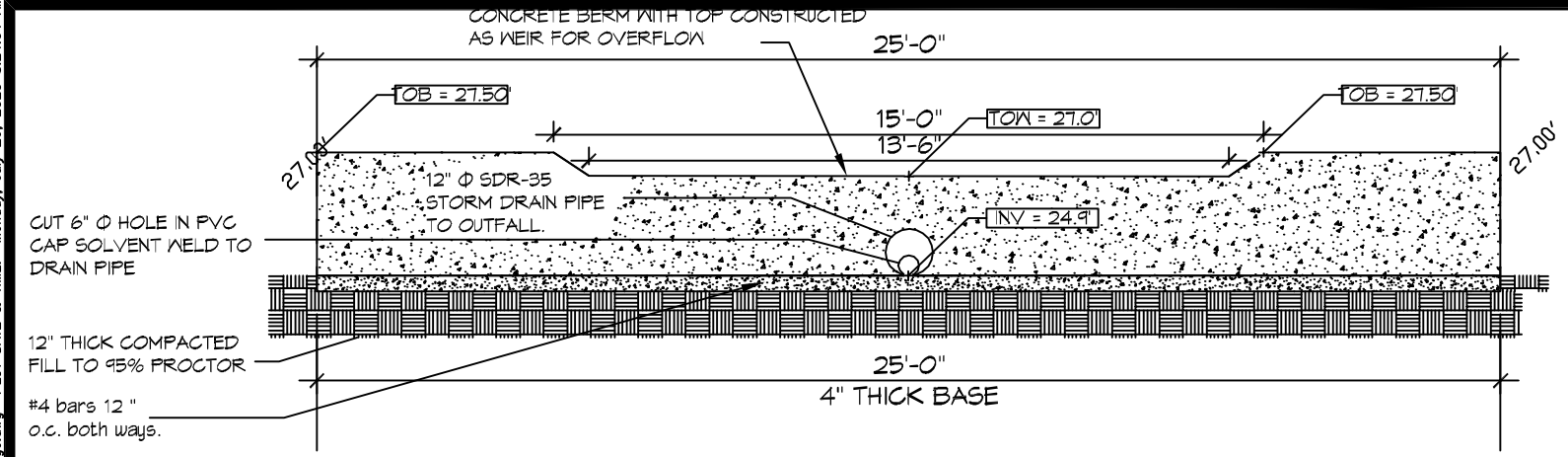
MULTI PURPOSE BUILDING  
**OUR LADY OF THE PINNACLES**  
6610 VORTSCH ROAD  
LACOMBE, LOUISIANA 70445  
JOB NO: 07-15-2020  
DATE: 2/27/20  
DRAWN BY: KJK  
CHECKED BY: KJK

SHEET TITLE:  
**ACCESSIBILITY INFORMATION**

DRAWING NUMBER:  
**GO02**

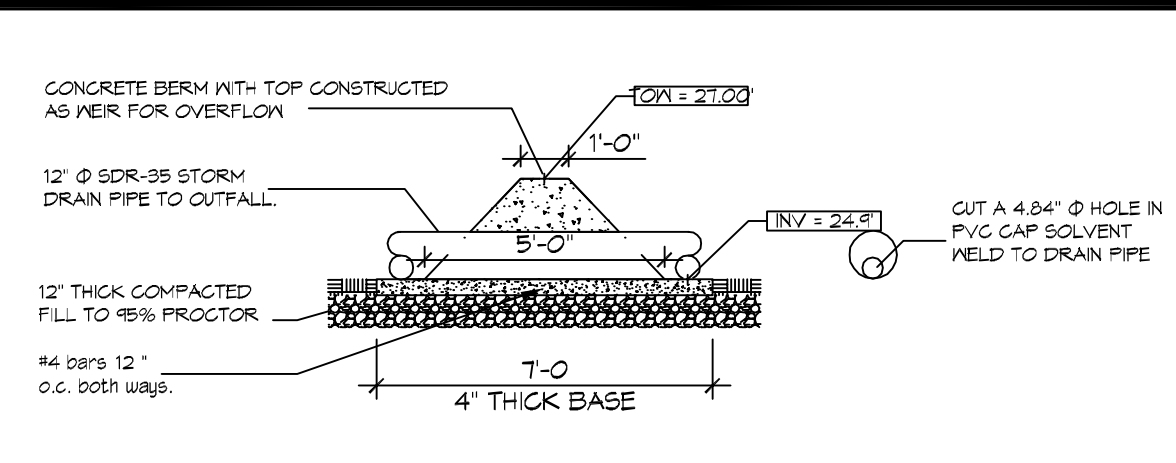
SHEET No: 2 of 12





**D SECTION**  
SCALE: NTS

**E SECTION**  
SCALE: NTS



**4 DETAIL**  
SCALE: NTS

FILL CALCS  
 74.05 s.f. (Section B) x 52.75' (Section A) = 3,906 c.f.  
 36.35 s.f. (Section A) x 43.50' (Section B) = 3,949 c.f.  
 Average Fill Calcs = 3,653 c.f.

RE-SHAPE EXISTING 25' SWALE  
 3 sections of swale average 3.95 s.f. x 183 linear ft long  
 Average Fill Calc for Swale = 123 c.f.

(NOTE: ALL SIDEWALKS and DRIVES ARE LEVEL WITH EXISTING GRADES)

Fill Total = 4,376 c.f.

**NO NET FILL CALCULATIONS**

SWALE BETWEEN BUILDING CUT CALCS  
 AVERAGE AREA = 1.76 s.f. x 1.57 s.f. = 1.67 s.f.  
 LENGTH OF SWALE = 133 ft  
 Volume of SWALE CUT = 222 c.f.

RE-SHAPE EXISTING 25' SWALE CUT CALCS  
 3 sections of swale average 4.95 s.f. x 183 linear ft long  
 Average Fill Calc for Swale = 906 c.f.

WOODED AREA CUT CALCS  
 The area to be cut is (130.7ft x 59.5ft) x 0.50 ft depth  
 = 3,910 c.f.

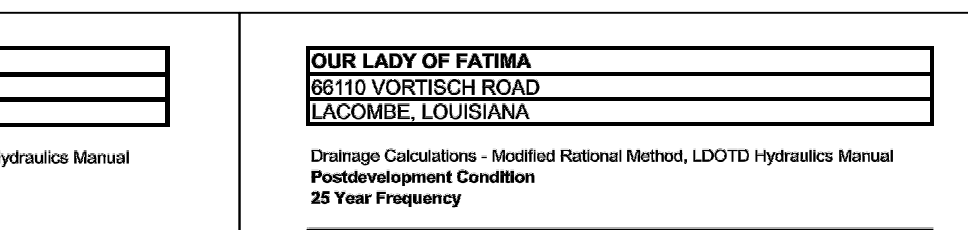
CUT Totals = 4,838 c.f.

**NO NET FILL CALCULATIONS**

# GENERAL SITE DRAINAGE NOTES

- REMOVE DEBRIS AND CLEAN BOTTOM OF EXISTING SWALL.
- ALL ELEVATIONS SHOWN ARE M.S.L. AND ARE PLUS OR MINUS
- FIELD VERIFY ALL ELEVATIONS AND AND DRAINAGE SYSTEM PLACEMENT PRIOR TO START OF WORK.

# SITE DRAINAGE LEGEND



# STORM WATER RUN-OFF CALCULATIONS

**OUR LADY OF FATIMA**  
 65110 VORTISCH ROAD  
 LACOMBE, LOUISIANA

Drainage Calculations - Modified Rational Method, LDDTD Hydraulics Manual  
 Postdevelopment Condition  
 25 Year Frequency

Use/Category	Factor	Area, sq ft	Total
Undeveloped/Green Space	0.2	131,697	26,339.4
Street Surface	0.5	24,356	12,178.0
Building Concrete Parking	0.95	11,638	11,047.1
<b>Weighted C Factor</b>	<b>0.20</b>	<b>131,697</b>	<b>26,339.4</b>
<b>Hydraulic Length, L</b>	<b>210</b> feet		
<b>Slope, in %</b>	<b>0.4702</b>		
<b>Roughness Coefficient, C</b>	<b>0.20</b>		
<b>Time of Concentration, Tc</b>	<b>40.81</b> minutes		
<b>Intensity from Region</b>	<b>6.172058</b>		
<b>Q25 Peak Flow</b>	<b>2.73</b> cfs		
<b>10% Reduction</b>	<b>2.46</b> cfs		

**OUR LADY OF FATIMA**  
 65110 VORTISCH ROAD  
 LACOMBE, LOUISIANA

Drainage Calculations - Modified Rational Method, LDDTD Hydraulics Manual  
 Postdevelopment Condition  
 25 Year Frequency

Use/Category	Factor	Area, sq ft	Total
Undeveloped/Green Space	0.2	95,400	19,080.0
Street Surface	0.5	24,356	12,178.0
Building Concrete Parking	0.95	11,638	11,047.1
<b>Weighted C Factor</b>	<b>0.277</b>	<b>131,697</b>	<b>36,515.1</b>
<b>Hydraulic Length, L</b>	<b>210</b> feet		
<b>Slope, in %</b>	<b>0.4702</b>		
<b>Roughness Coefficient, C</b>	<b>0.277</b>		
<b>Time of Concentration, Tc</b>	<b>28.3</b> minutes		
<b>Intensity from Region</b>	<b>4.265534</b>		
<b>Q25 Peak Flow</b>	<b>4.64</b> cfs		
<b>Q25 Allowable Flow - Undeveloped Flow =</b>	<b>2.46</b> cfs		

**OUR LADY OF FATIMA**  
 65110 VORTISCH ROAD  
 LACOMBE, LOUISIANA

Drainage Calculations - Modified Rational Method, LDDTD Hydraulics Manual  
 Storage Requirements for a 25 Year Frequency Storm Event

Storm Duration (D)	i	q	ds	Max. Storage Volume, cf	Max. Storage Volume, ac-ft
10 min	7.88	6.28	1.73	0.085	0.085
20 min	6.28	4.42	1.25	0.063	0.063
30 min	5.27	3.63	1.04	0.054	0.054
40 min	4.58	3.03	0.85	0.046	0.046
50 min	4.04	2.63	0.73	0.040	0.040
60 min	3.64	2.35	0.65	0.036	0.036
70 min	3.31	2.14	0.59	0.033	0.033
80 min	3.05	1.96	0.54	0.030	0.030
90 min	2.83	1.81	0.50	0.028	0.028
100 min	2.64	1.67	0.46	0.026	0.026

Storage Volume, Cubic Feet  
 25 Year Storm

**OUR LADY OF FATIMA**  
 65110 VORTISCH ROAD  
 LACOMBE, LOUISIANA

Detention Area: Storage detention required = 4,474 c.f.

There are 3 parking lots that are 64 ft wide and have an aggregate length of 333 ft; the parking lot edges are 0.2 ft above the 100 ft in those areas. The detention calculations are based on the area of a triangle (0.5ab) where 0.2 ft is divided by 2 = 0.1 ft depth  
 333 ft long  
 64 ft width  
 0.1 ft depth  
 2131.2 cubic feet of detention

Swale Detained water surface elevation = 27.00 ft

183 linear ft  
 2000.43 cubic feet of detention

Total detention provided = 5,008 c.f. of water which exceeds the detention required.

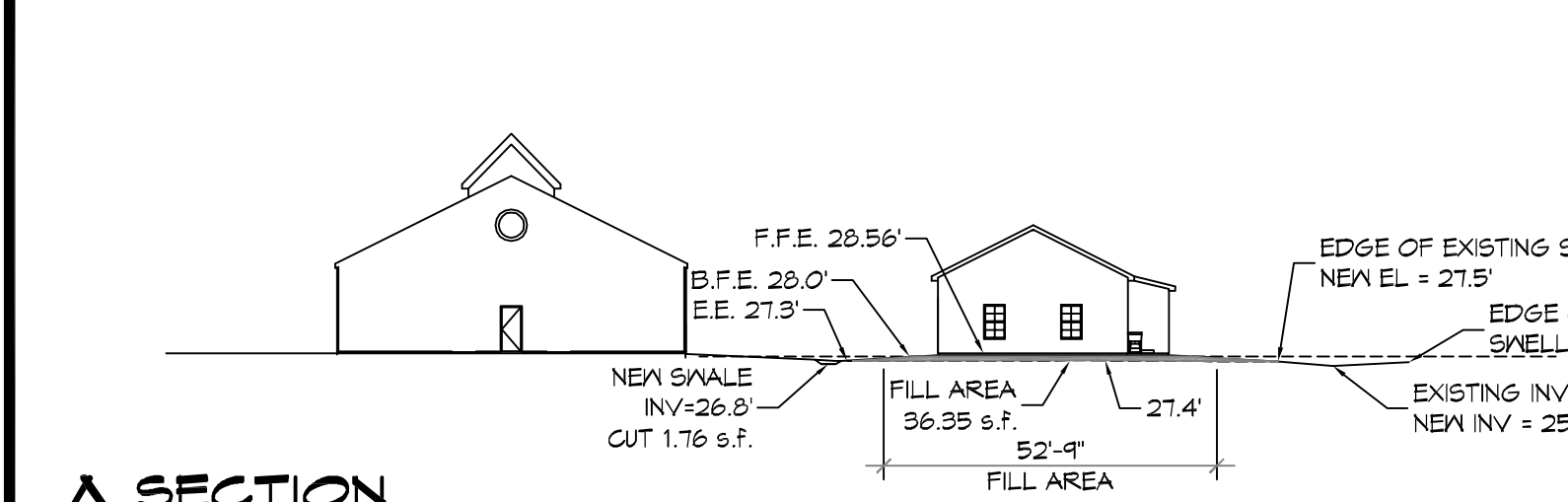
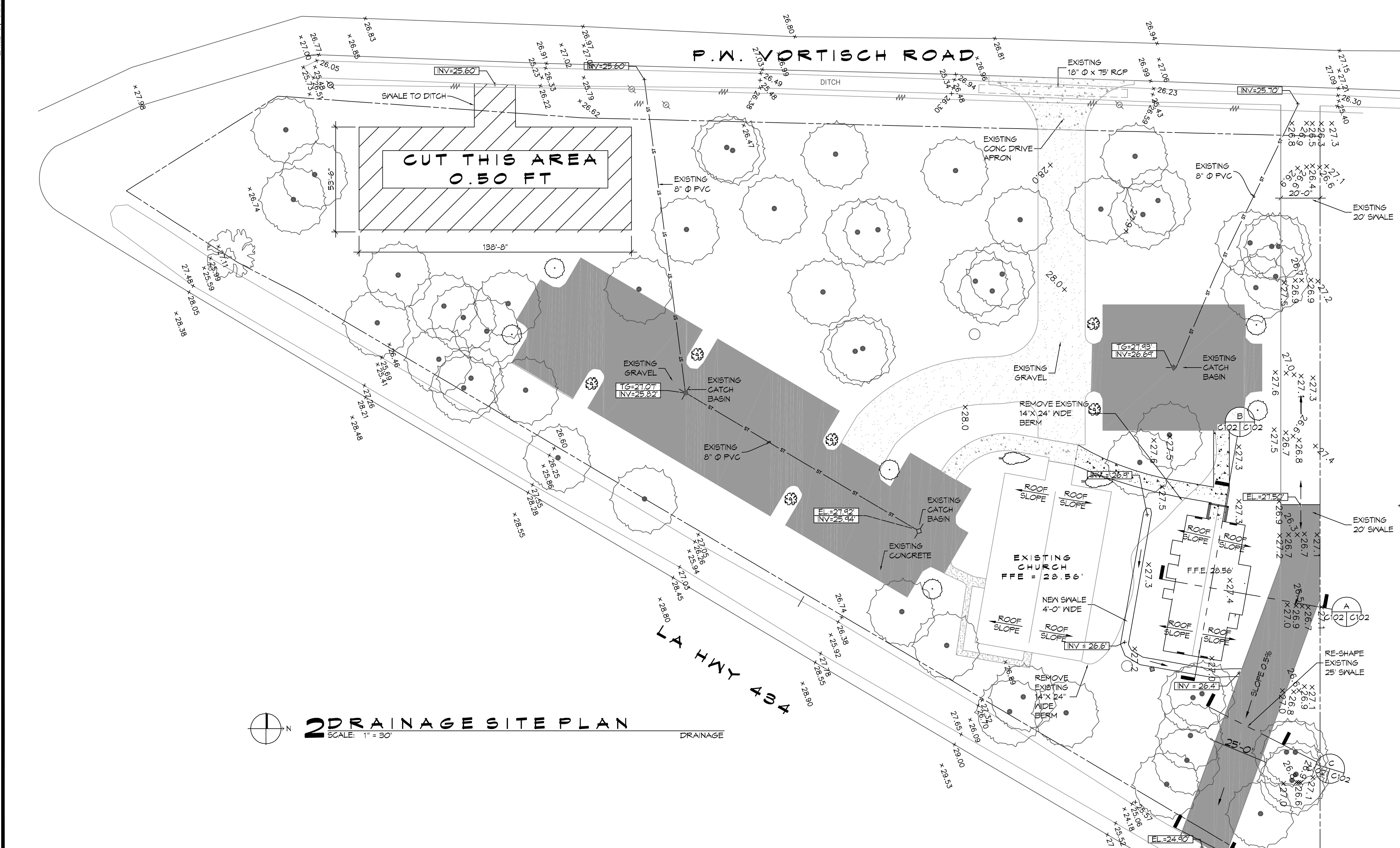
**OUR LADY OF FATIMA**  
 65110 VORTISCH ROAD  
 LACOMBE, LOUISIANA

Discharge End Area Calculations:  $Q = A(2gh)^{1/2}$

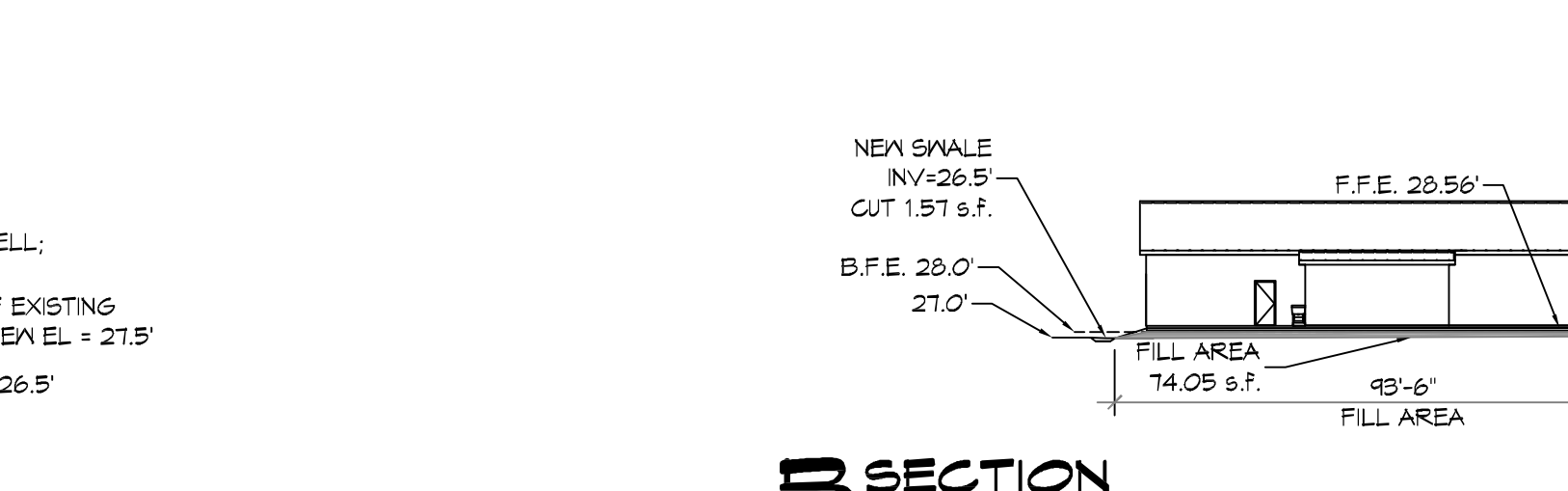
Parameter	Value
Allowable Run Off, Q	2.46 CFS per pipe
Friction Factor, f	0.88
Acceleration, g	32.2 ft/sec
Height above Invert, H ft	1.63 ft
End Area, Sq ft	0.24
Square Inches	35.22"
Diameter, Inches	6.70"

Use 6.5" Diameter Orifice Plate in Terminal CB

SINCE EACH DETENTION AREA DETAINS APPROXIMATELY 1/2 OF THE VOLUME, EACH AREA SHOULD HAVE AN ORIFICE 35.22 SQ INCHES / 2 = 17.61 SQ INCHES. THEREFORE THE DIAMETER CALCULATES TO 4.74" DIAMETER ORIFICE.



**A SECTION**  
SCALE: NTS



**B SECTION**  
SCALE: NTS

**DAMMON ENGINEERING, INC.**  
 LOUISIANA & MISSISSIPPI

Chief Engineer: Brian Mitchell, PE  
 554 Old Spanish Trail  
 Slidell, LA 70688  
 www.dammonengineering.com  
 info@dammonengineering.com  
 PH: 905.649.9532

DATE	REVISIONS
	# DESCRIPTION



**OUR LADY OF FATIMA**  
 MULTI-PURPOSE BUILDING

65110 VORTISCH ROAD  
 LACOMBE, LOUISIANA 70445

JOB No: 25710 DATE: 07-15-2020  
 DRAWN BY: CKD CHECKED BY: CKD

SHEET TITLE:  
 SITE PLAN - DRAINAGE

DRAWING NUMBER:  
**C102**

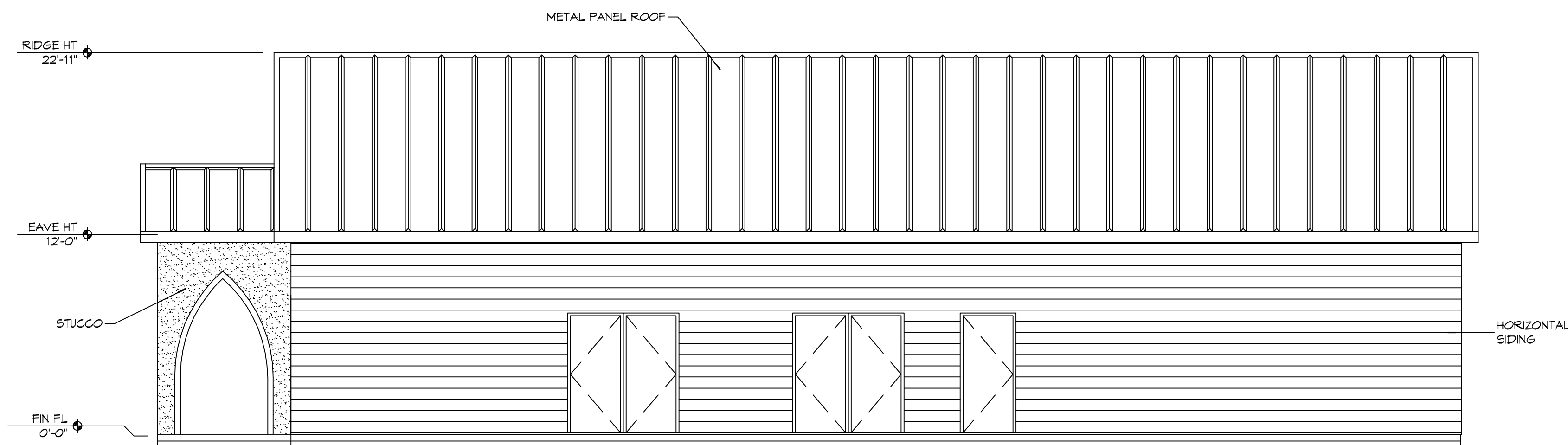
SHEET No: 4 of 12



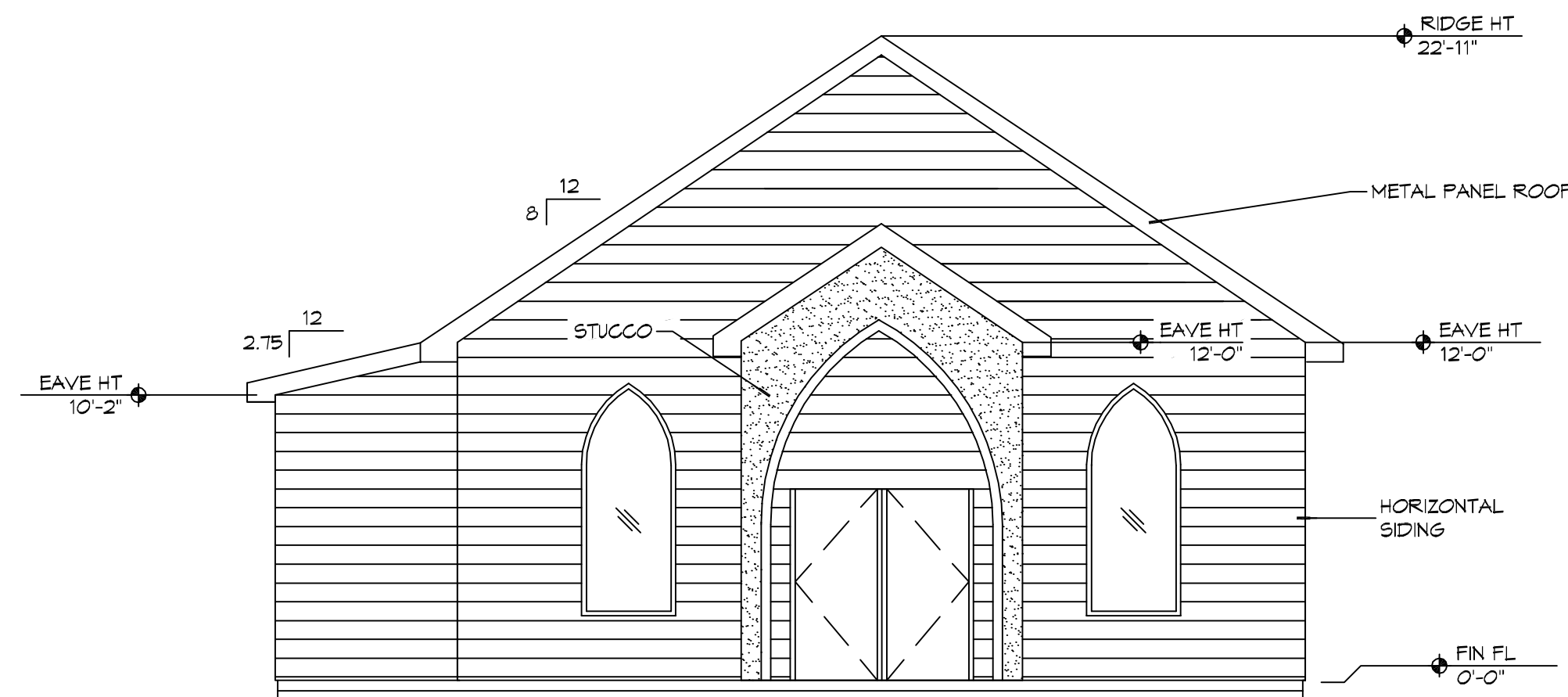




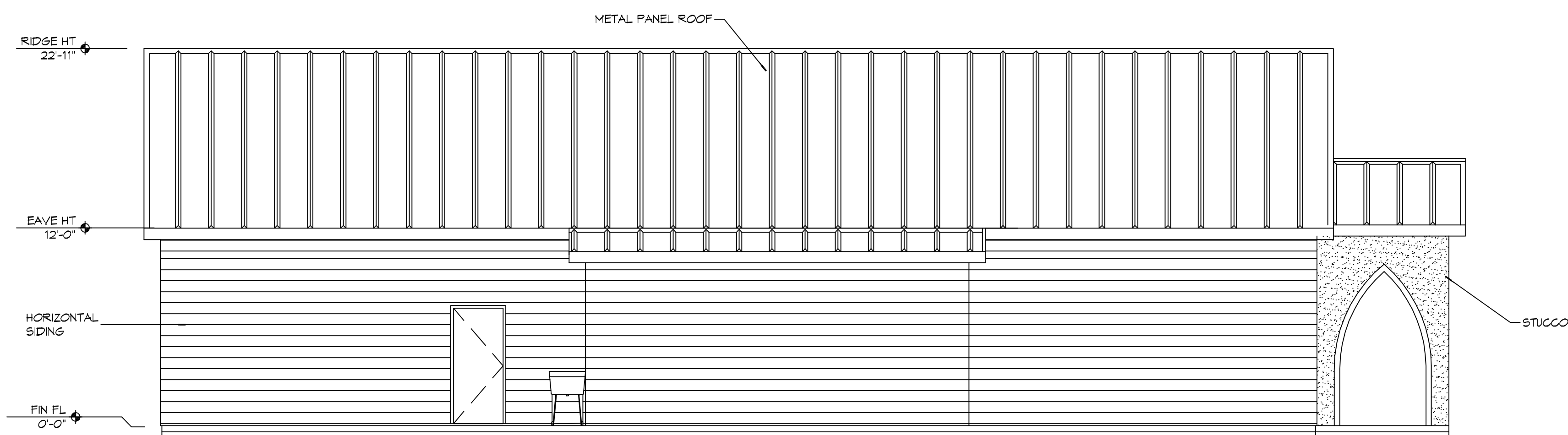
FILE NAME: J:\\_CHURCHES\3103 - Our Lady of Loretta Church\Drawings\Concept\3103\_0000.dwg PLOT DATE: 4/16/2020 8:23:27 AM



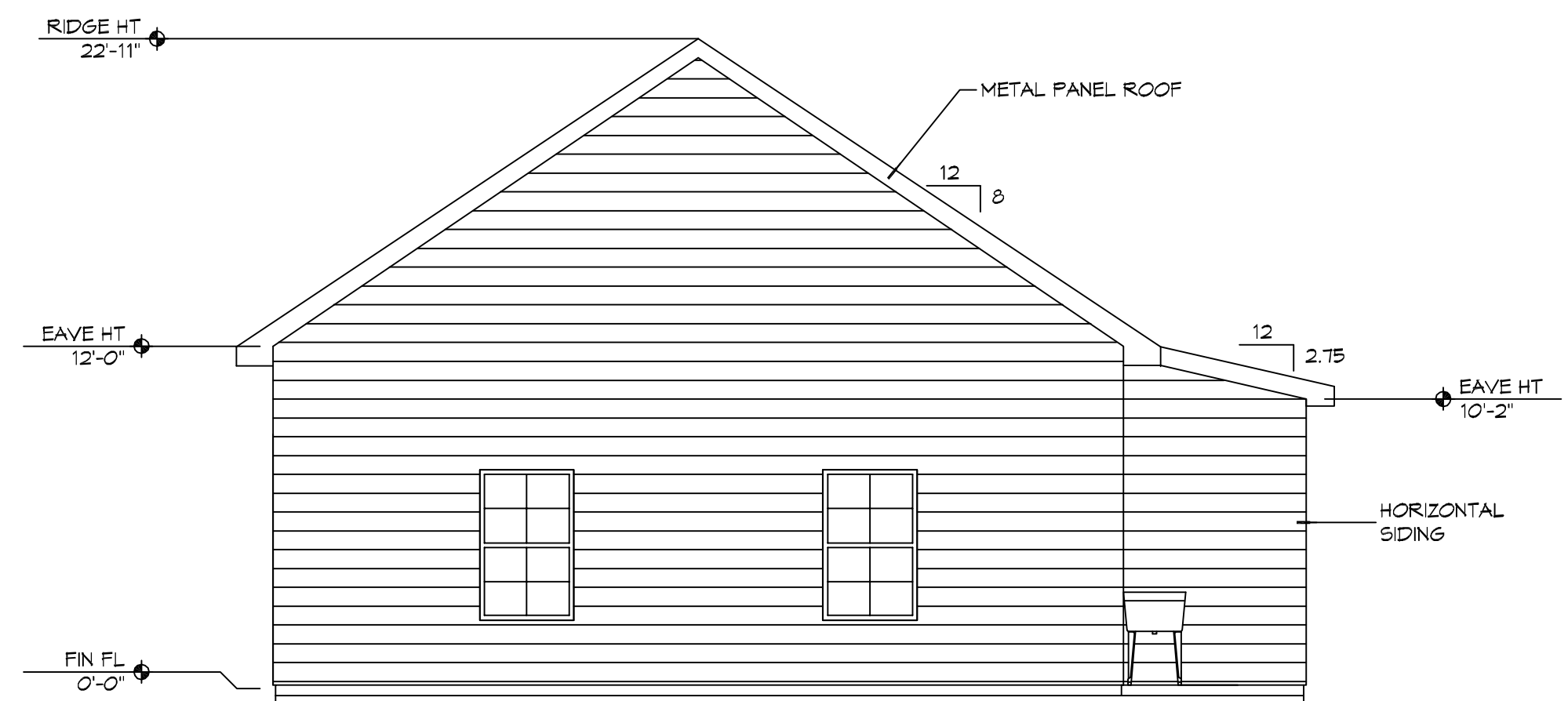
**11 EXTERIOR ELEVATION**  
SCALE: 3/16" = 1'-0"  
N



**10 EXTERIOR ELEVATION**  
SCALE: 3/16" = 1'-0"  
SOUTH N WEST



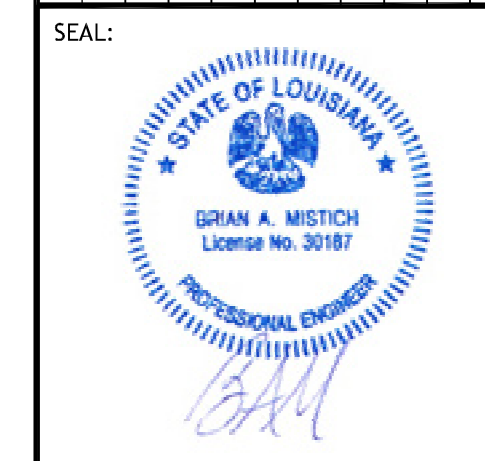
**9 EXTERIOR ELEVATION**  
SCALE: 3/16" = 1'-0"  
N



**8 EXTERIOR ELEVATION**  
SCALE: 3/16" = 1'-0"  
N NORTH EAST

**DAMMON ENGINEERING, INC.**  
LOUISIANA & MISSISSIPPI  
www.dammonengineering.com  
554 Old Spanish Trail  
Slidell, LA 70458  
PH: 985.649.5832

#	DESCRIPTION	DATE



MULTI-PURPOSE BUILDING  
**OF OUR LADY OF A**  
6610 VORTSCH ROAD  
LACOMBE, LOUISIANA 70445  
JOB No: 2710 DATE: 07-15-2020  
DRAWN BY: RLD CHECKED BY: CKD

SHEET TITLE:  
**EXTERIOR ELEVATIONS**

DRAWING NUMBER:  
**A103**







