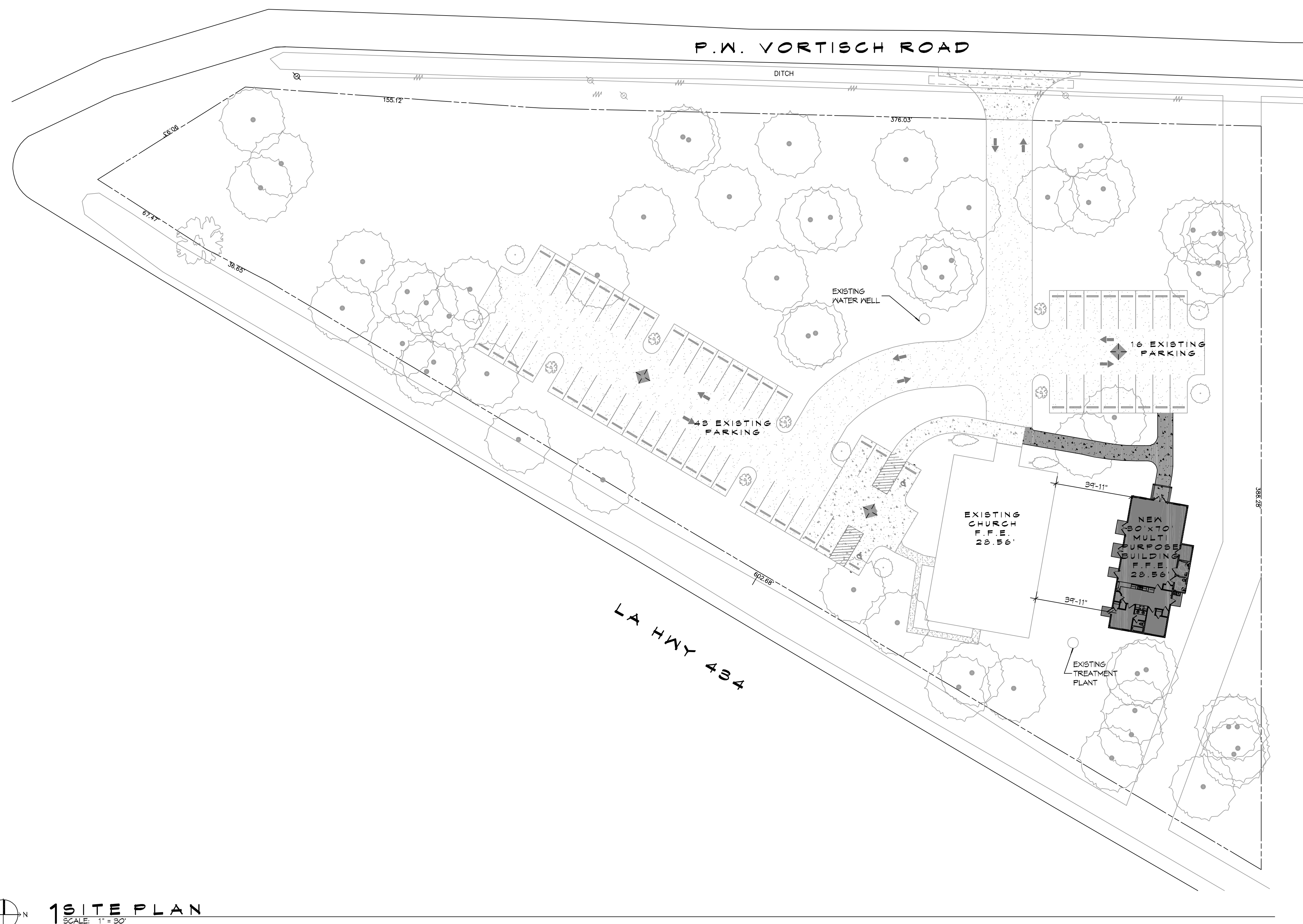


FILE NAME: J:\PROJECTS\2020 - Our Lady of Loretto\Drawings\Site Plan.dwg PLOT DATE: Monday, August 17, 2020 10:24:16 AM



1 SITE PLAN
SCALE: 1" = 30'

PLANNING
PARCEL 1 ZONED A2 SUBURBAN RURAL
FLOOD ZONE
ZONE 'AE'
BUILDING ELEVATION
BASE FLOOD ELEVATION = 21.0' FINISHED FLOOR ELEVATION = 28.56'
PARKING REQUIREMENTS
1 SPACE PER 4 OCCUPANTS 192 SEATS / 4 = 48 PARKING SPACES REQUIRED 2 HANDICAP PARKING SPACES PROVIDED 56 REGULAR PARKING SPACES PROVIDED EXISTING TOTAL PARKING SPACES PROVIDED 56
SITE LIGHTING
EXTERIOR LIGHTING SHALL BE SHADED OR INWARDLY DIRECTED IN SUCH A MANNER SO THAT NO DIRECT LIGHTING OR GLARE BE CAST BEYOND THE PROPERTY LINE. THE INTENSITY OF SUCH LIGHTING SHALL NOT EXCEED ONE FOOT CANDLE AS MEASURED AT THE ABUTTING PROPERTY LINE.

DAMMON ENGINEERING, INC.
 LOUISIANA & MISSISSIPPI
 Chief Engineer: Brian A. Mistich, PE
 554 Old Spanish Trail
 Slidell, LA 70468
 www.dammonengineering.com
 info@dammonengineering.com
 PH: 985.499.9832

#	DESCRIPTION	DATE

SEAL:

BRIAN A. MISTICH
License No. 30187
PROFESSIONAL ENGINEER

MULTI-PURPOSE BUILDING
OUR LADY OF A T I M O F A
 6610 VORTISCH ROAD
 LACOMBE, LOUISIANA 70445
 JOB No: 25710 | DATE: 08-17-2020
 DRAWN BY: CKD | CHECKED BY: CKD

SHEET TITLE:
SITE PLAN

DRAWING NUMBER:
C101