

**LIFE-SAFETY INFORMATION**

<b>APPLICABLE CODES</b>	
NFPA 101 LIFE-SAFETY CODE 2015	
OCCUPANCY TYPE(S) AND CHAPTER(S)	
ASSEMBLY (CHAPTER 12)	
MULTIPLE, MIXED, OR SEPARATE OCCUPANCY (REFERENCE CHAPTER 6)	
N/A	
<b>OCCUPANT LOAD FACTOR</b>	(REFERENCE TABLE 7.3.1.2)
2,100 SF 15 SF PER OCC	149 OCCUPANTS
<b>CLASSIFICATION OF HAZARD OF CONTENTS</b>	
(REFERENCE: OCCUPANCY CHAPTER AND 6.2.2. SPECIFY LOW, ORDINARY, OR HIGH)	
<b>CONSTRUCTION TYPE(S)</b> (REFERENCE: CHAPTERS, TABLE A.9.2.1.2 AND COMMENTARY TABLE 8.1 IN HANDBOOK)	
II(222)	
<b>MINIMUM EXIT SEPARATION DISTANCE FOR REMOTELY LOCATED EXITS</b>	
(REFERENCE: SECTION 7.5; SPECIFY 1/2 OR 1/3 DIAGONAL DISTANCE OF AREA SERVED)	
1/2 DIAGONAL = 51'-1"	
<b>MAXIMUM DEAD-END CORRIDORS</b> (REFERENCE: OCCUPANCY CHAPTER AND TABLE A.7.6)	
20 FEET	
<b>MAXIMUM COMMON PATH OF TRAVEL DISTANCE</b> (REFERENCE: OCCUPANCY CHAPTER AND TABLE A.7.6)	
20 FEET/75 FEET	
<b>MAXIMUM TRAVEL DISTANCE TO EXITS</b> (REFERENCE: OCCUPANCY CHAPTER AND TABLE A.7.6)	
200 FEET	
*MAIN ENTRANCE MUST BE SIGNED TO ACCOMMODATE 1/2 OCCUPANT LOAD OF BUILDING	
<b>EXTINGUISHMENT REQUIREMENTS</b> NOT SPRINKLERED (NOT REQUIRED)	
<b>DETECTION, ALARM, AND COMMUNICATION SYSTEMS</b> YES	
<b>ALLOWABLE HEIGHT AND BUILDING AREA</b> PER IBC EQUIVALENT CONSTRUCTION TYPE	

**BUILDING CODE INFORMATION**

<b>APPLICABLE CODES</b>	
IBC 2015	
<b>ASSEMBLY GROUP AS</b> (IBC 2015 CHAPTER 13)	
OCCUPANT LOAD CALCULATIONS (TABLE 1004.1.2)	
ASSEMBLY (LESS CONCENTRATED USE, WITHOUT FIXED SEATING)	15 SF PER OCCUPANT (NET) 149 OCCUPANTS
<b>CONSTRUCTION TYPE(S)</b> (TABLE 503)	
IIB (SECTION 503)	
<b>ALLOWABLE HEIGHT AND BUILDING AREA LIMITED BY TYPE OF CONSTRUCTION</b>	
MAXIMUM HEIGHT IN STORIES (SECTION 503 & 504, TABLE 503)	2
MAXIMUM AREA IN SQUARE FEET (SECTION 503, 506 & 507, TABLE 503)	9,500 SF

**WIND SPEED DESIGN REQUIREMENTS**

THIS BUILDING SHALL BE DESIGNED WITH IBC SEC 1609 AS A FULLY ENCLOSED BLDG USING THE FOLLOWING INFORMATION:

WIND DESIGN DATA:

DETERMINATION OF WIND LOADS SHALL BE IN ACCORDANCE WITH IBC SEC 1609.3 (A), (B), OR (C) DEPENDING ON THE RISK CATEGORY

BASIC WIND SPEED (3 SECOND GUST) = 137 MPH (IBC FIG 1609C)

RISK FACTOR: CATEGORY II BLDG SURFACE ROUGHNESS = B

TOPOGRAPHIC FACTOR = 1 EXPOSURE = B

DESIGN WIND PRESSURE (ASCE 7-10 TABLE 26.6-1): 31.4 PSF

INTERNAL PRESSURE COEFFICIENT (ASCE 7-10 TABLE 26.11-1): ± 0.18

LIVE LOADS (IBC SEC 1607)

ASSEMBLY NO FIXED SEATING (IBC TABLE 1607.1): 100 PSF

PLATFORMS (ASSEMBLY) (IBC TABLE 1607.1): 100 PSF

LOBBIES (IBC TABLE 1607.1): 100 PSF

STORAGE, LIGHT (IBC TABLE 1607.1): 125 PSF

ROOF LIVE LOADS (IBC TABLE 1607.1): 20 PSF UNIFORM, 300 LB CONCENTRATED

SNOW LOADS (IBC TABLE 1608):

GROUND SNOW LOAD (IBC FIG 1608.2): 5 PSF

**FLOOD ZONE INFORMATION**

BASED ON THE SURVEY OF THIS PROPERTY BY J.V. BURKES AND ASSOCIATES, INC. THIS PROPERTY IS IN A SPECIAL FLOOD HAZARD AREA. F.I.R.M. COMMUNITY MAP NO 225205 0275 C; REVISED 10/11/1984

FLOOD ZONE: C & A BASE FLOOD ELEVATION: N/A

ELEVATIONS REFER TO NGVD 1929 DATUM

**PROJECT STATISTICS**

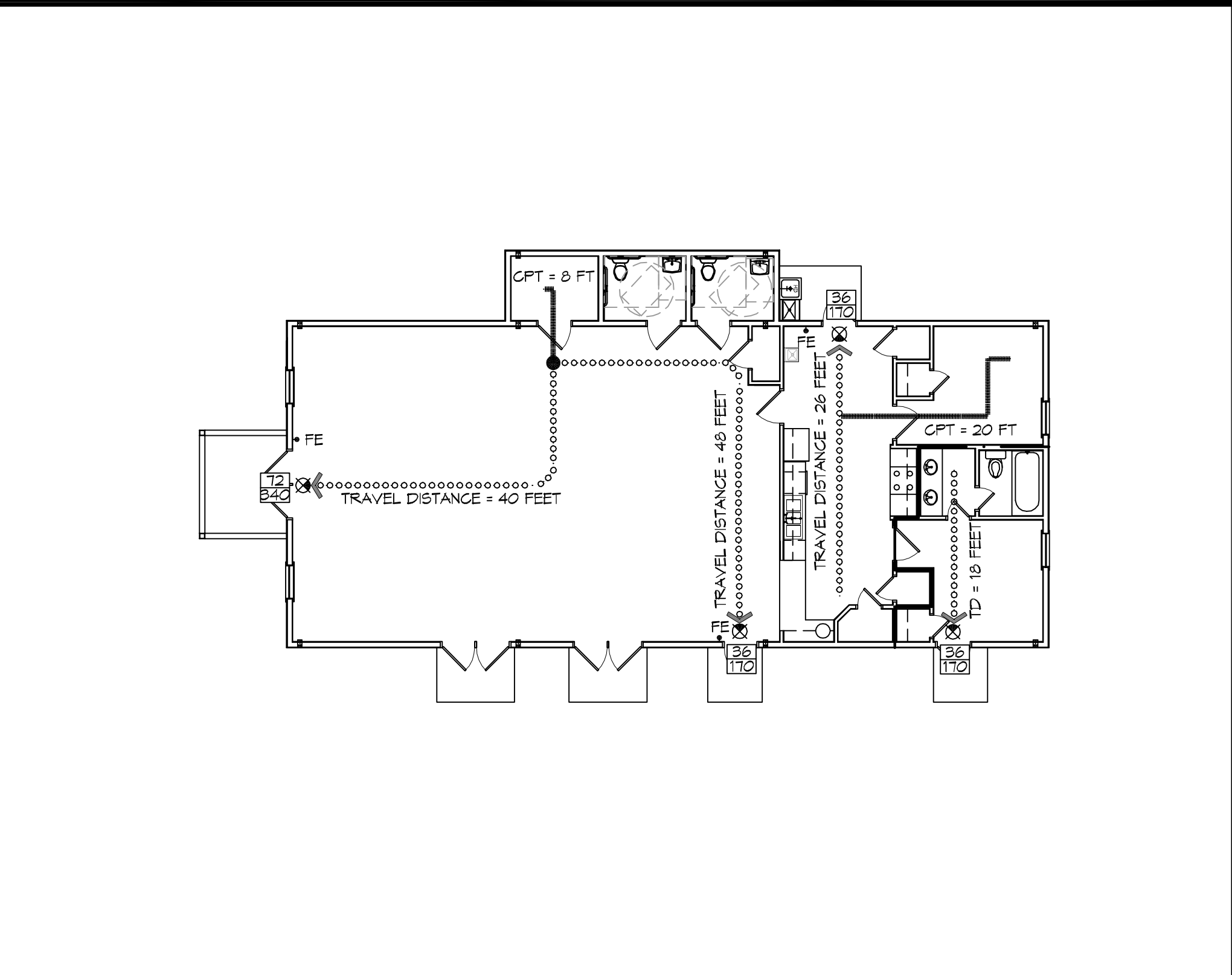
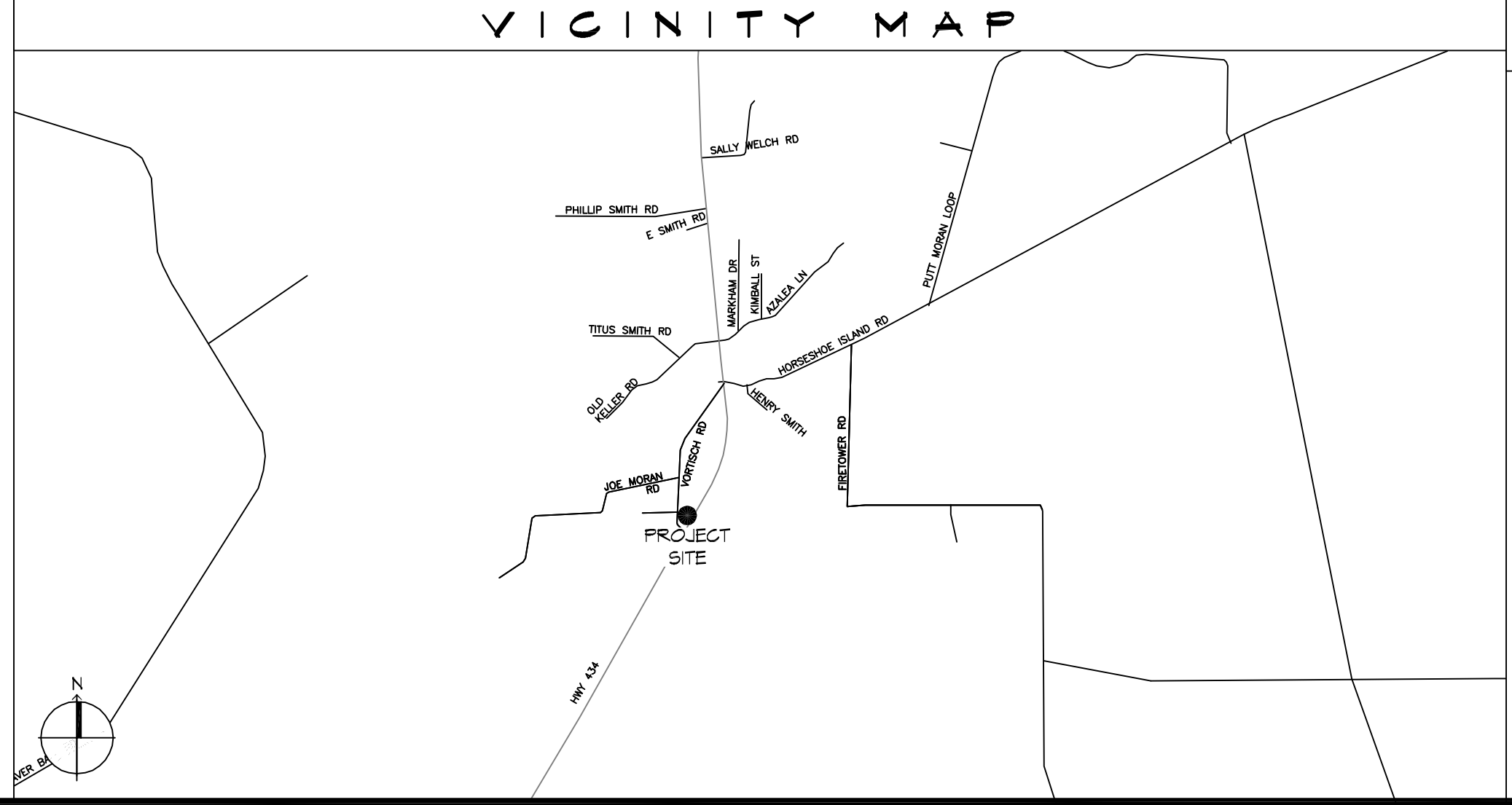
SQUARE FOOTAGE	
NEW BUILDING	2,100 SF
TOTAL ENCLOSED SPACE	2,100 SF

# FOUR LADY OF FATIMA

## MULTIPURPOSE BUILDING

### LACOMBE LOUISIANA

LIFE-SAFETY LEGEND	
SYMBOL	DESCRIPTION
	EXITS
	DOOR FIRE RATING (MINUTES)
	DOOR WIDTH/EGRESS CAPACITY
	EXIT LIGHT
	FIRE EXTINGUISHER AND CABINET
	FIRE EXTINGUISHER W/ WALL MTD BRACKET
	COMMON PATH OF TRAVEL
	TRAVEL DISTANCE
	DECISION POINT
	SMOKE PARTITION
	ONE-HOUR FIRE RATED PARTITION
	TWO-HOUR FIRE RATED PARTITION
	TWO-HOUR FIRE/SMOKE PARTITION
	FOUR-HOUR RATED PARTITION



**LIFE-SAFETY PLAN**  
SCALE: 3/32" = 1'-0"

REVISIONS	DATE	DESCRIPTION
#		

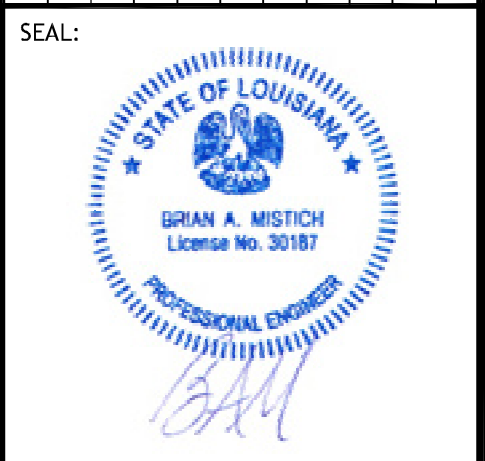
SHEET #	SHEET TITLE
G001	GENERAL PROJECT, LIFE-SAFETY AND CODE INFORMATION
G002	ACCESSIBILITY INFORMATION
C101	SITE PLAN
C102	SITE DRAINAGE PLAN
C103	SITE UTILITY PLAN/EROSION CONTROL
A101	FLOOR PLAN
A102	REFLECTED CEILING PLAN
A103	EXTERIOR ELEVATIONS
P101	PLUMBING FLOOR PLAN
M101	MECHANICAL FLOOR PLAN, DETAILS AND SCHEDULES
E101	ELECTRICAL FLOOR PLAN - Poyer AND LIGHTING
E102	ELECTRICAL PANEL AND ONE LINE DIAGRAM

GENERAL NOTES	
1.	ALL MATERIALS AND WORK, INCIDENTAL TO THE CONSTRUCTION OF THIS PROJECT, SHALL CONFORM TO ALL GOVERNING CODES, AND REGULATIONS OF AGENCIES IN AUTHORITY.
2.	CONTRACTOR SHALL PROVIDE ALL PUBLIC PROTECTIONS NECESSARY AS REQUIRED BY LAW.
3.	THE DRAWINGS, SPECIFICATIONS AND ANY SUBSEQUENTLY ISSUED ADDENDA, AMENDMENTS OR SUCH CHANGE ORDERS APPROVED BY THE OWNER AND THE CONTRACTOR ARE PART OF THESE CONTRACT DOCUMENTS.
4.	<b>DO NOT SCALE DRAWINGS.</b> CONSULT WITH THE ARCHITECT REGARDING ANY ITEMS IN THE CONTRACT DOCUMENTS THAT REQUIRE CLARIFICATION.
5.	TRASH SHALL BE REMOVED FROM THE SITE NOT LESS THAN TWICE MONTHLY.
6.	THE GENERAL CONTRACTOR SHALL VERIFY EXISTING CONDITIONS PRIOR TO COMMENCING WORK AND REPORT ANY AND ALL DISCREPANCIES TO THE ARCHITECT.
7.	CONTRACTOR VEHICLES AND EQUIPMENT NECESSARY FOR CONSTRUCTION MAY BE PARKED ON THE SITE. OTHER VEHICLES PARKED ON THE SITE REQUIRE THE OWNER'S PERMISSION.
8.	NAMING A CERTAIN BRAND, MAKE OR MANUFACTURER IS TO DESIGNATE THE GENERAL STYLE, TYPE, CHARACTER AND QUALITY STANDARD OF THE PRODUCT DESIRED. SUBSTITUTION REQUESTS MUST BE SUBMITTED PRIOR TO BIDDING.
9.	ALL MATERIALS/EQUIPMENT SHALL BE INSTALLED PER MANUFACTURER'S RECOMMENDATIONS. WORK NOT CONSISTENT WITH MANUFACTURER'S RECOMMENDATIONS WILL BE REJECTED BY OWNER/ARCHITECT.

**DAMMON ENGINEERING, INC.**  
LOUISIANA & MISSISSIPPI

Chief Engineer: Brian Mistich, PE  
594 Old Spanish Trail  
Slidell, LA 70688  
www.dammonengineering.com  
info@dammonengineering.com  
PH: 905.449.9832

REVISIONS	DATE	DESCRIPTION
#		



MULTI-PURPOSE BUILDING

FOUR LADY OF FATIMA

66110 VORTSCH ROAD  
LACOMBE, LOUISIANA 70445

JOB No: 2579 | DATE: 08-11-2020  
DRAWN BY: RLD | CHECKED BY: CKD

SHEET TITLE: GENERAL PROJECT, LIFE-SAFETY, AND BUILDING CODE INFORMATION

DRAWING NUMBER: **G001**

SHEET No: 1 of 12