

**LIFE-SAFETY INFORMATION**

<b>APPLICABLE CODES</b>	
NFPA 101 LIFE-SAFETY CODE 2015	
OCCUPANCY TYPE(S) AND CHAPTER(S)	
ASSEMBLY (CHAPTER 12)	
MULTIPLE, MIXED, OR SEPARATE OCCUPANCY (REFERENCE CHAPTER 6)	
N/A	
<b>OCCUPANT LOAD FACTOR</b>	(REFERENCE TABLE 7.3.1.2)
2,100 SF 15 SF PER OCC	149 OCCUPANTS
<b>CLASSIFICATION OF HAZARD OF CONTENTS</b>	
(REFERENCE: OCCUPANCY CHAPTER AND 6.2.2. SPECIFY LOW, ORDINARY, OR HIGH)	
<b>CONSTRUCTION TYPE(S)</b> (REFERENCE: CHAPTERS, TABLE A.9.2.1.2 AND COMMENTARY TABLE 8.1 IN HANDBOOK)	
II(222)	
<b>MINIMUM EXIT SEPARATION DISTANCE FOR REMOTELY LOCATED EXITS</b>	
(REFERENCE: SECTION 7.5; SPECIFY 1/2 OR 1/3 DIAGONAL DISTANCE OF AREA SERVED)	
1/2 DIAGONAL =	51'-1"
<b>MAXIMUM DEAD-END CORRIDORS</b> (REFERENCE: OCCUPANCY CHAPTER AND TABLE A.7.6)	
20 FEET	
<b>MAXIMUM COMMON PATH OF TRAVEL DISTANCE</b> (REFERENCE: OCCUPANCY CHAPTER AND TABLE A.7.6)	
20 FEET/75 FEET	
<b>MAXIMUM TRAVEL DISTANCE TO EXITS</b> (REFERENCE: OCCUPANCY CHAPTER AND TABLE A.7.6)	
200 FEET	
*MAIN ENTRANCE MUST BE SIGNED TO ACCOMMODATE 1/2 OCCUPANT LOAD OF BUILDING	
<b>EXTINGUISHMENT REQUIREMENTS</b> NOT SPRINKLERED (NOT REQUIRED)	
<b>DETECTION, ALARM, AND COMMUNICATION SYSTEMS</b> YES	
<b>ALLOWABLE HEIGHT AND BUILDING AREA</b> PER IBC EQUIVALENT CONSTRUCTION TYPE	

**BUILDING CODE INFORMATION**

<b>APPLICABLE CODES</b>	
IBC 2015	
<b>ASSEMBLY GROUP AS</b> (IBC 2015 CHAPTER 13)	
OCCUPANT LOAD CALCULATIONS (TABLE 1004.1.2)	
ASSEMBLY (LESS CONCENTRATED USE, WITHOUT FIXED SEATING)	15 SF PER OCCUPANT (NET) 149 OCCUPANTS
<b>CONSTRUCTION TYPE(S)</b> (TABLE 503)	
IIB (SECTION 503)	
<b>ALLOWABLE HEIGHT AND BUILDING AREA LIMITED BY TYPE OF CONSTRUCTION</b>	
MAXIMUM HEIGHT IN STORIES (SECTION 503 & 504, TABLE 503)	2
MAXIMUM AREA IN SQUARE FEET (SECTION 503, 506 & 507, TABLE 503)	9,500 SF

**WIND SPEED DESIGN REQUIREMENTS**

THIS BUILDING SHALL BE DESIGNED WITH IBC SEC 1609 AS A FULLY ENCLOSED BLDG USING THE FOLLOWING INFORMATION:

WIND DESIGN DATA:

DETERMINATION OF WIND LOADS SHALL BE IN ACCORDANCE WITH IBC SEC 1609.3 (A), (B), OR (C) DEPENDING ON THE RISK CATEGORY

BASIC WIND SPEED (3 SECOND GUST) = 137 MPH (IBC FIG 1609C)

RISK FACTOR: CATEGORY II BLDG SURFACE ROUGHNESS = B

TOPOGRAPHIC FACTOR = 1 EXPOSURE = B

DESIGN WIND PRESSURE (ASCE 7-10 TABLE 26.6-1): 31.4 PSF

INTERNAL PRESSURE COEFFICIENT (ASCE 7-10 TABLE 26.11-1): ± 0.18

LIVE LOADS (IBC SEC 1607)

ASSEMBLY NO FIXED SEATING (IBC TABLE 1607.1): 100 PSF

PLATFORMS (ASSEMBLY) (IBC TABLE 1607.1): 100 PSF

LOBBIES (IBC TABLE 1607.1): 100 PSF

STORAGE, LIGHT (IBC TABLE 1607.1): 125 PSF

ROOF LIVE LOADS (IBC TABLE 1607.1): 20 PSF UNIFORM, 300 LB CONCENTRATED

SNOW LOADS (IBC TABLE 1608):

GROUND SNOW LOAD (IBC FIG 1608.2): 5 PSF

**FLOOD ZONE INFORMATION**

BASED ON THE SURVEY OF THIS PROPERTY BY J.V. BURKES AND ASSOCIATES, INC. THIS PROPERTY IS IN A SPECIAL FLOOD HAZARD AREA. F.I.R.M. COMMUNITY MAP NO 225205 0275 C; REVISED 10/11/1994

FLOOD ZONE: C & A BASE FLOOD ELEVATION N/A

ELEVATIONS REFER TO NGVD 1929 DATUM

**PROJECT STATISTICS**

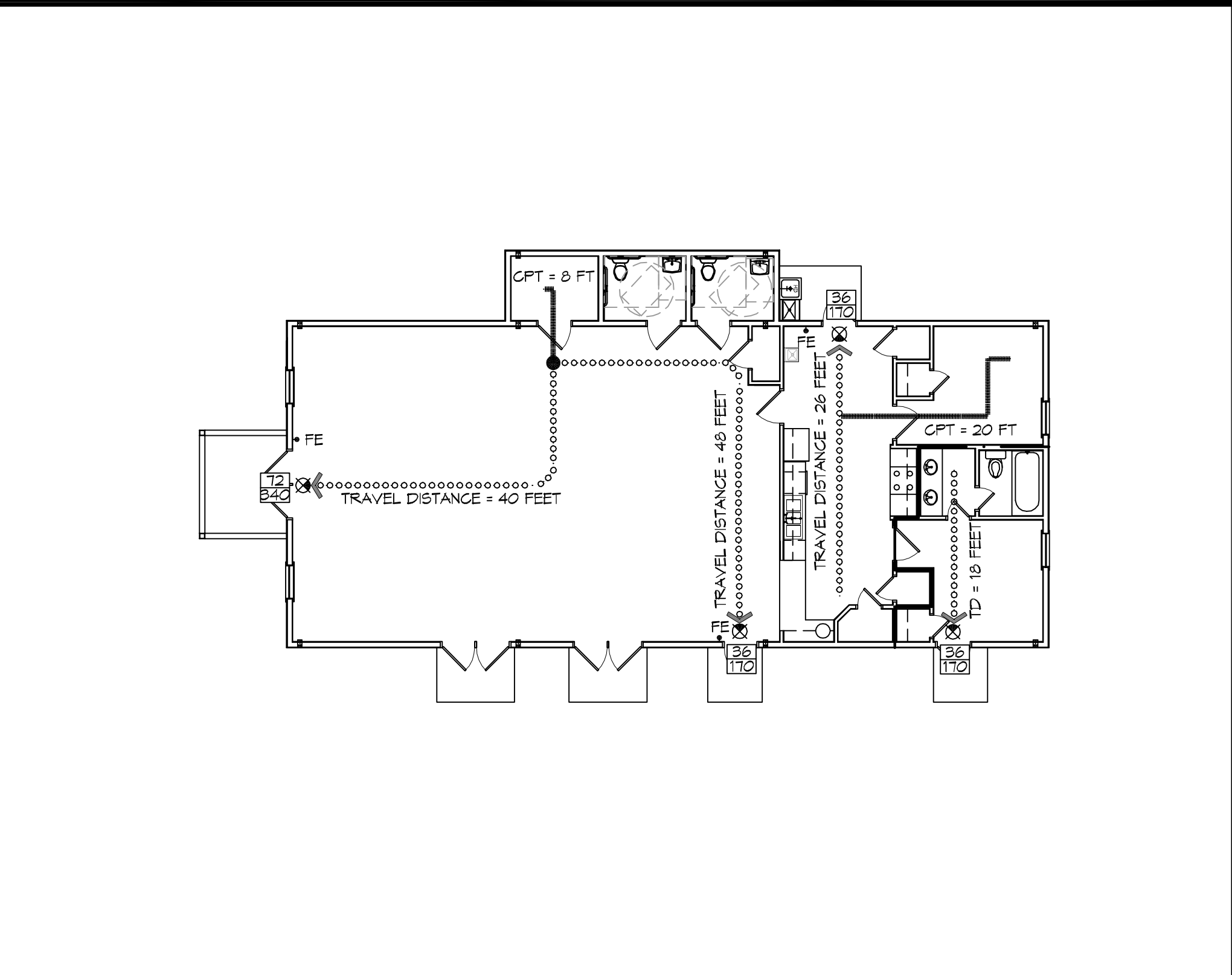
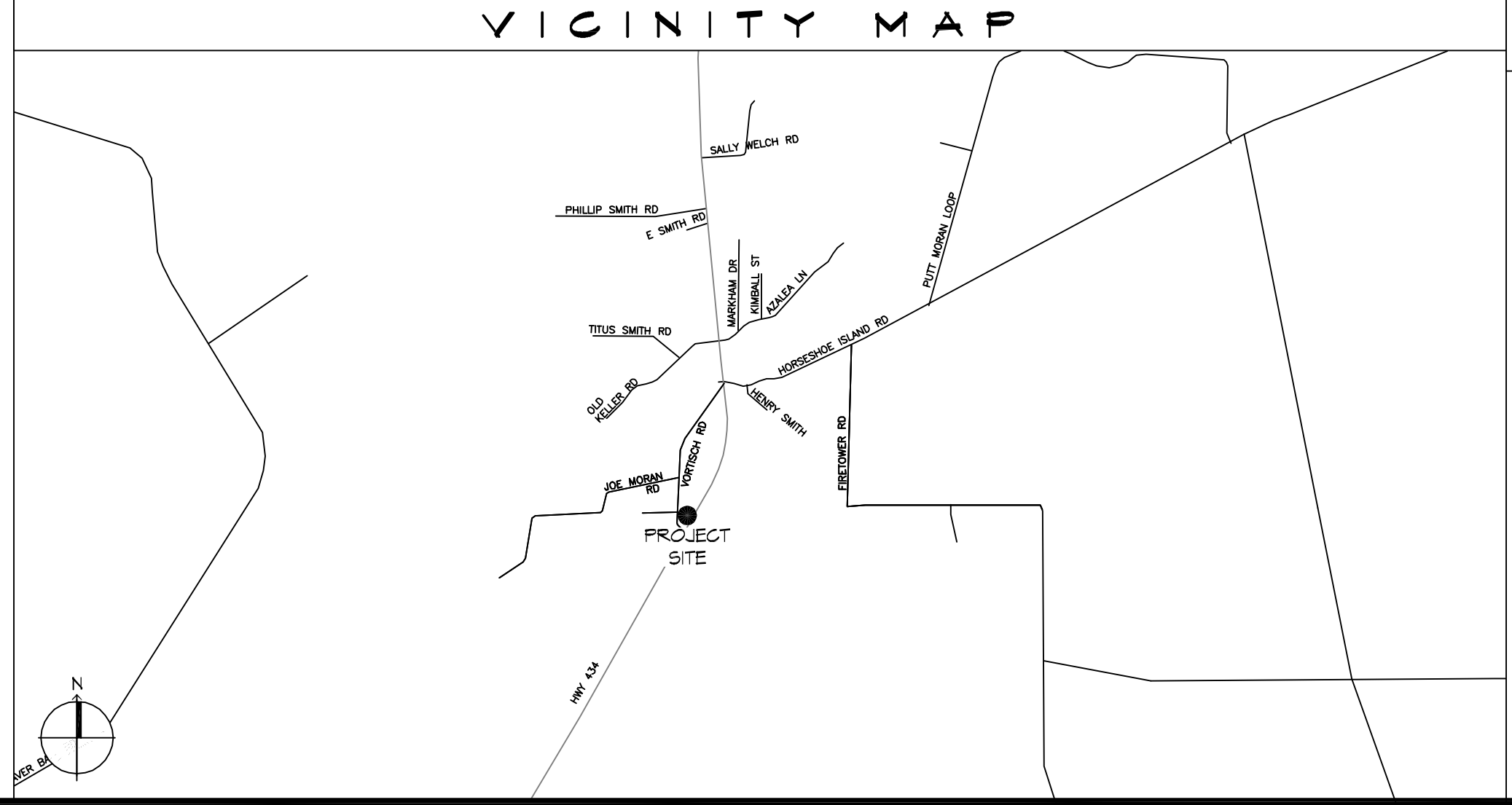
SQUARE FOOTAGE	
NEW BUILDING	2,100 SF
TOTAL ENCLOSED SPACE	2,100 SF

# FOUR LADY OF MATERM A

## MULTIPURPOSE BUILDING

### LACOMBE LOUISIANA

LIFE-SAFETY LEGEND	
SYMBOL	DESCRIPTION
	EXITS
	DOOR FIRE RATING (MINUTES)
	DOOR WIDTH/EGRESS CAPACITY
	EXIT LIGHT
	FIRE EXTINGUISHER AND CABINET
	FIRE EXTINGUISHER W/ WALL MTD BRACKET
	COMMON PATH OF TRAVEL
	TRAVEL DISTANCE
	DECISION POINT
	SMOKE PARTITION
	ONE-HOUR FIRE RATED PARTITION
	TWO-HOUR FIRE RATED PARTITION
	TWO-HOUR FIRE/SMOKE PARTITION
	FOUR-HOUR RATED PARTITION



LIFE-SAFETY PLAN  
SCALE: 3/32" = 1'-0"

REVISIONS	DATE	DESCRIPTION
#		

SEAL:

FOUR LADY OF MATERM A

MULTI-PURPOSE BUILDING

66110 VORTSCH ROAD  
LACOMBE, LOUISIANA 70445

JOB No: 2579 DATE: 08-11-2020  
DRAWN BY: RLD CHECKED BY: CKD

**SHEET INDEX**

SHEET #	SHEET TITLE
0001	GENERAL PROJECT, LIFE-SAFETY AND CODE INFORMATION
0002	ACCESSIBILITY INFORMATION
G101	SITE PLAN
G102	SITE DRAINAGE PLAN
G103	SITE UTILITY PLAN/EROSION CONTROL
A101	FLOOR PLAN
A102	REFLECTED CEILING PLAN
A103	EXTERIOR ELEVATIONS
P101	PLUMBING FLOOR PLAN
M101	MECHANICAL FLOOR PLAN, DETAILS AND SCHEDULES
E101	ELECTRICAL FLOOR PLAN - Poyer AND LIGHTING
E102	ELECTRICAL PANEL AND ONE LINE DIAGRAM

**GENERAL NOTES**

- ALL MATERIALS AND WORK, INCIDENTAL TO THE CONSTRUCTION OF THIS PROJECT, SHALL CONFORM TO ALL GOVERNING CODES, AND REGULATIONS OF AGENCIES IN AUTHORITY.
- CONTRACTOR SHALL PROVIDE ALL PUBLIC PROTECTIONS NECESSARY AS REQUIRED BY LAW.
- THE DRAWINGS, SPECIFICATIONS AND ANY SUBSEQUENTLY ISSUED ADDENDA, AMENDMENTS OR SUCH CHANGE ORDERS APPROVED BY THE OWNER AND THE CONTRACTOR ARE PART OF THESE CONTRACT DOCUMENTS.
- DO NOT SCALE DRAWINGS.** CONSULT WITH THE ARCHITECT REGARDING ANY ITEMS IN THE CONTRACT DOCUMENTS THAT REQUIRE CLARIFICATION.
- TRASH SHALL BE REMOVED FROM THE SITE NOT LESS THAN TWICE MONTHLY.
- THE GENERAL CONTRACTOR SHALL VERIFY EXISTING CONDITIONS PRIOR TO COMMENCING WORK AND REPORT ANY AND ALL DISCREPANCIES TO THE ARCHITECT.
- CONTRACTOR VEHICLES AND EQUIPMENT NECESSARY FOR CONSTRUCTION MAY BE PARKED ON THE SITE. OTHER VEHICLES PARKED ON THE SITE REQUIRE THE OWNER'S PERMISSION.
- NAMING A CERTAIN BRAND, MAKE OR MANUFACTURER IS TO DESIGNATE THE GENERAL STYLE, TYPE, CHARACTER AND QUALITY STANDARD OF THE PRODUCT DESIRED. SUBSTITUTION REQUESTS MUST BE SUBMITTED PRIOR TO BIDDING.
- ALL MATERIALS/EQUIPMENT SHALL BE INSTALLED PER MANUFACTURER'S RECOMMENDATIONS. WORK NOT CONSISTENT WITH MANUFACTURER'S RECOMMENDATIONS WILL BE REJECTED BY OWNER/ARCHITECT.

**DAMMON ENGINEERING, INC.**  
LOUISIANA & MISSISSIPPI

www.dammonengineering.com  
594 Old Spanish Trail  
Slidell, LA 70668  
PH: 905.649.9532

REVISIONS	DATE	DESCRIPTION
#		

SEAL:

FOUR LADY OF MATERM A

MULTI-PURPOSE BUILDING

66110 VORTSCH ROAD  
LACOMBE, LOUISIANA 70445

JOB No: 2579 DATE: 08-11-2020  
DRAWN BY: RLD CHECKED BY: CKD

SHEET TITLE:  
GENERAL PROJECT,  
LIFE-SAFETY, AND  
BUILDING CODE  
INFORMATION

DRAWING NUMBER:  
**0001**

SHEET No: 1 of 12





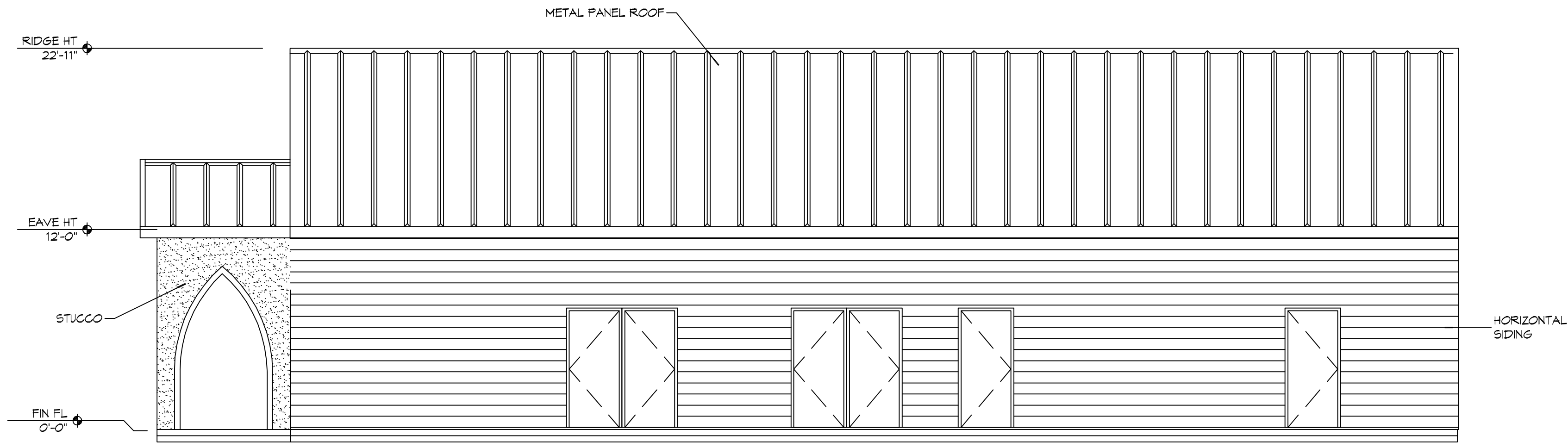




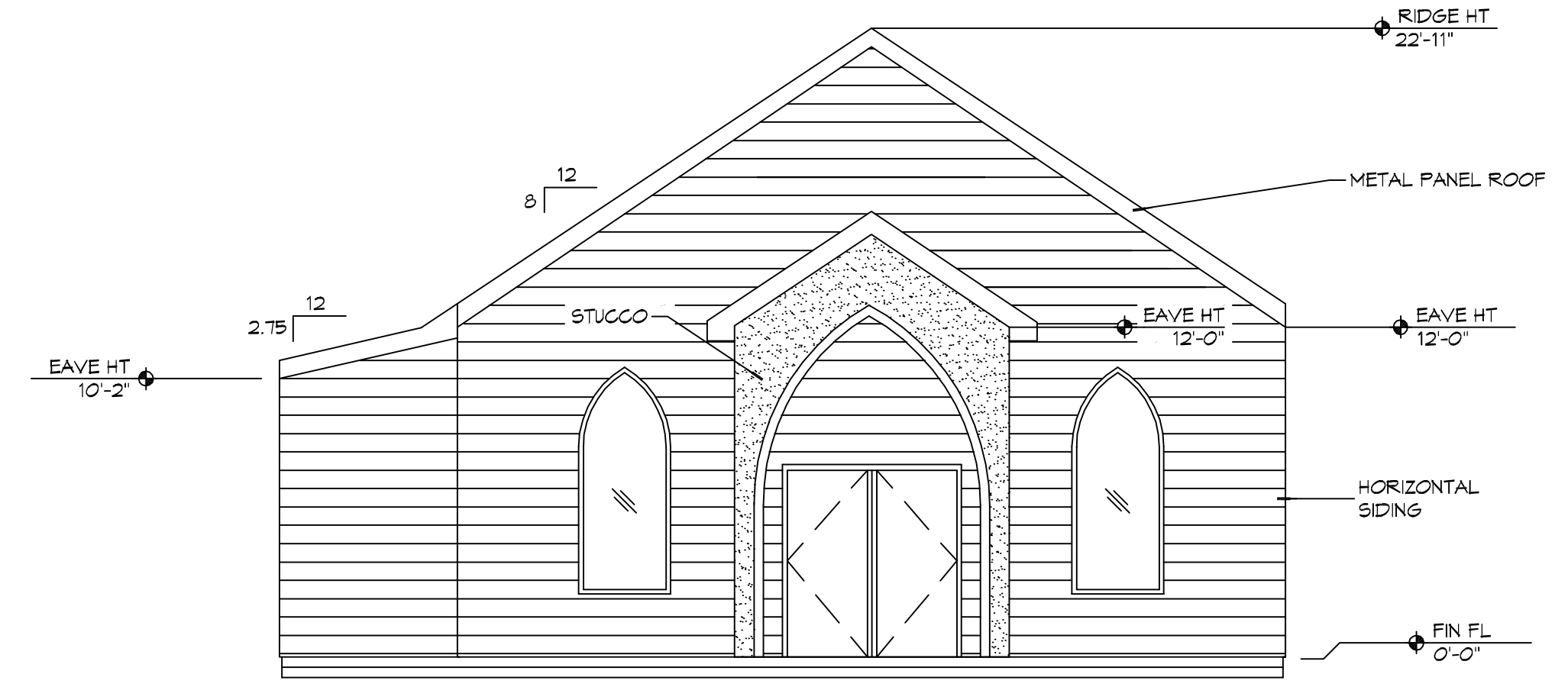




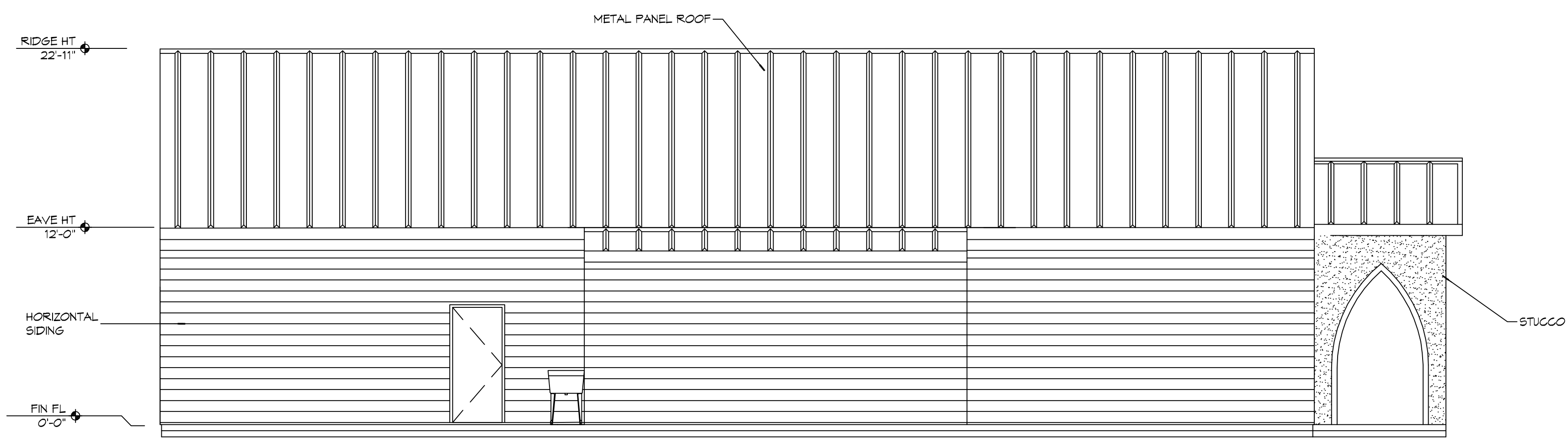
FILE NAME: J:\\_DWG\REV3.DWG - Out Line of Home Addition\DWG\Rev3.dwg Date: 08/11/2020 10:52:24



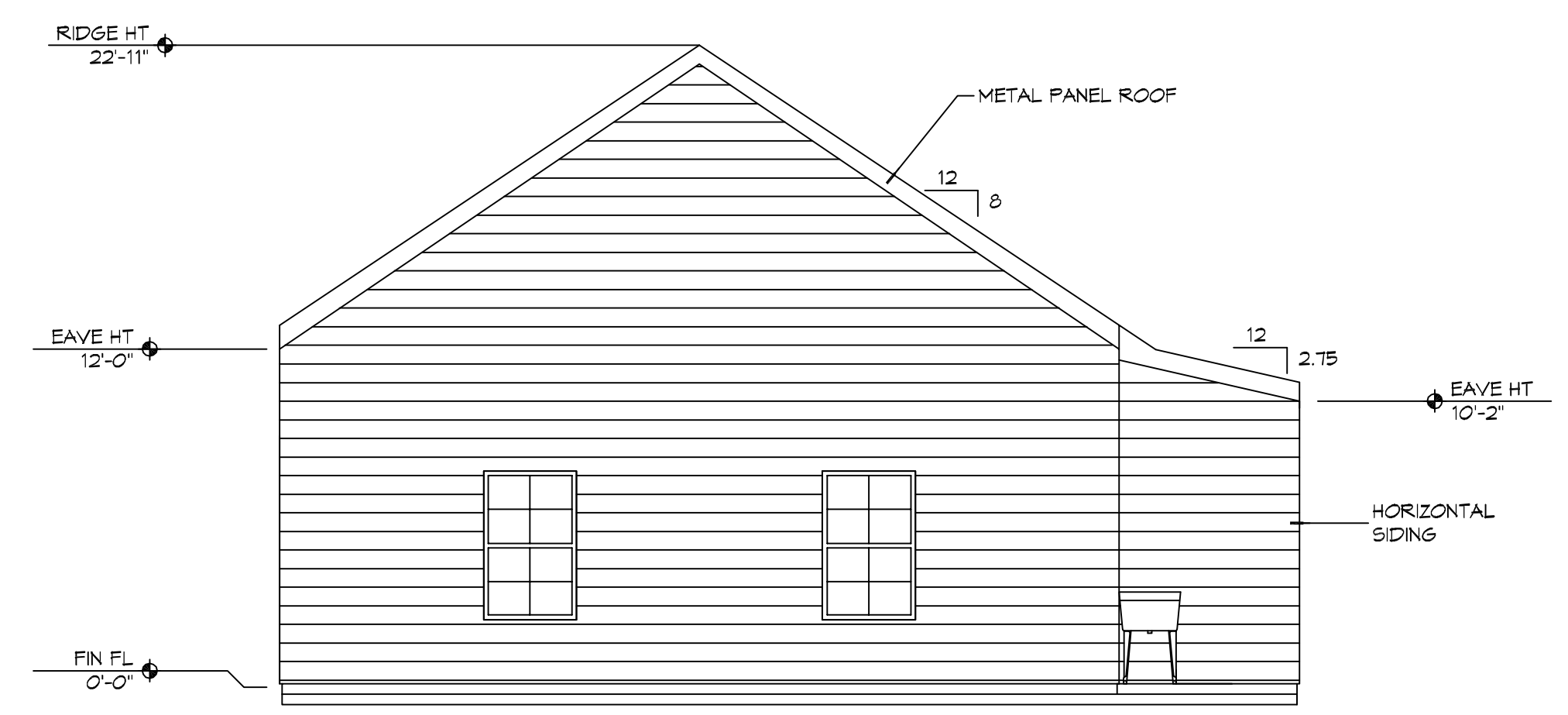
**11 EXTERIOR ELEVATION**  
SCALE: 3/16" = 1'-0"  
N



**10 EXTERIOR ELEVATION**  
SCALE: 3/16" = 1'-0"  
SOUTH N WEST



**9 EXTERIOR ELEVATION**  
SCALE: 3/16" = 1'-0"  
N



**8 EXTERIOR ELEVATION**  
SCALE: 3/16" = 1'-0"  
N NORTH EAST

**DAMMON ENGINEERING, INC.**  
LOUISIANA & MISSISSIPPI  
www.dammonengineering.com  
554 Old Spanish Trail  
Slatersville, LA 70468  
PH: 985.649.5832

#	DESCRIPTION	DATE

SEAL:

MULTI-PURPOSE BUILDING  
**OF OUR LADY OF A**  
DATE: 08-11-2020  
JOB No: 2570  
DRAWN BY: RLD  
CHECKED BY: CKD

SHEET TITLE:  
**EXTERIOR ELEVATIONS**

DRAWING NUMBER:  
**A103**







