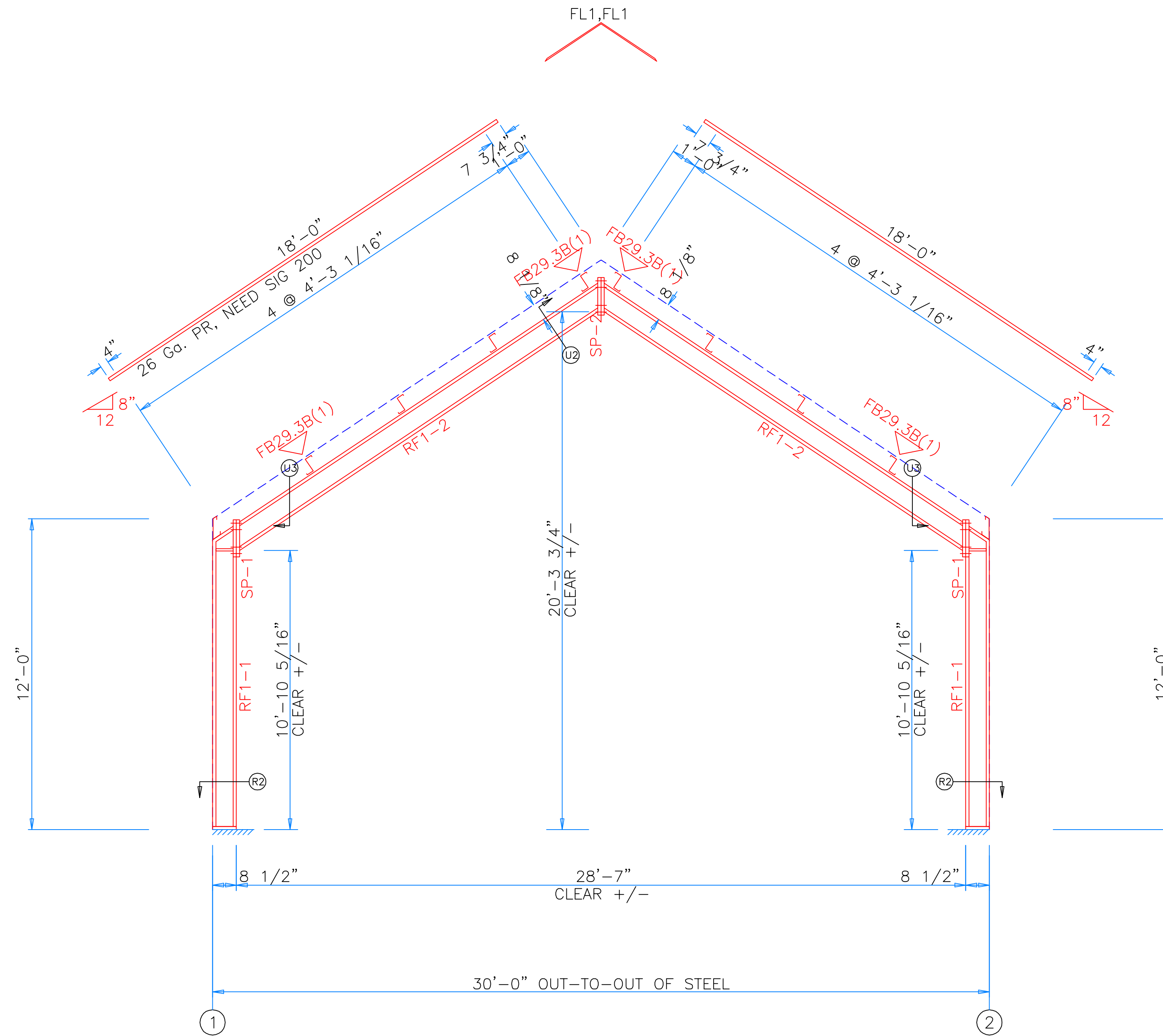


SPLICE PLATE & BOLT TABLE									
Mark	Qty Top	Qty Bot	Int	Type	Dia	Length	Width	Thick	Length
SP-1	4	4	0	A325	0.750	2.00	6"	1/2"	1'-6"
SP-2	4	4	0	A325	0.750	2.00	6"	3/8"	1'-6"

MEMBER TABLE									
Mark	Weight	Length	Web Depth		Web Plate		Outside Flange		Inside Flange
			Start	End	Thick	Length	W x Thk x Length	W x Thk x Length	
RF1-1	170	11'-2 1/4"	8.0	8.0	0.135	7'-7 3/16"	5 x 1/4" x 11'-1 11/16"	5 x 1/4" x 10'-5 11/16"	
RF1-2	245	17'-1 13/16"	8.0	8.0	0.135	9'-11"	5 x 1/4" x 17'-0 5/8"	5 x 1/4" x 17'-0 5/8"	
			8.0	8.0	0.135	7'-7 1/8"			

▽ FLANGE BRACES: Both Sides(U.N.)  
 FBxxB(1): xx=length(in)  
 B - FB2X1/8



RIGID FRAME ELEVATION: FRAME LINE D A



5001 Paris Road Chalmette, LA 70043  
 (800) 783-2647 (504) 277-7330 (fax)  
 www.corrugatedind.com

DESCRIPTION: RIGID FRAME ELEVATION							
CUSTOMER: DLR				PROJECT: PRJ			
LOCATION: PRJ Address 2							
DRN. BY	CK'D BY	DATE	SCALE	REV.	QUOTATION NO.	SHEET NO.	
DET	DES	6/23/20	N.T.S.	00	124-1	OF	