

LIFE-SAFETY INFORMATION	
APPLICABLE CODES	
NFPA 101 LIFE-SAFETY CODE 2015	
OCCUPANCY TYPE(S) AND CHAPTER(S)	
ASSEMBLY A-2 & A-3 (CHAPTER 12)	
MIXED OCCUPANCY (REFERENCE CHAPTER 6)	
OCCUPANT LOAD FACTOR (REFERENCE TABLE 7.3.1.2)	
ASSEMBLY A-3 (WITHOUT FIXED SEATS)	135 + 2 WHEEL CHAIR = 137 OCCUPANTS
ASSEMBLY A-2 100 SF PER PERSON	7 OCCUPANTS
144 OCCUPANTS	
CLASSIFICATION OF HAZARD OF CONTENTS	
(REFERENCE: OCCUPANCY CHAPTER AND 6.2.2) SPECIFY LOW, ORDINARY, OR HIGH	
CONSTRUCTION TYPE= VB (REFERENCE: CHAPTERS, TABLE A.8.2.1.2 AND COMMENTARY TABLE 6.1 IN HANDBOOK)	
MINIMUM EXIT SEPARATION DISTANCE FOR REMOTELY LOCATED EXITS	
(REFERENCE: SECTION 7.5; SPECIFY 1/2 OR 1/3 DIAGONAL DISTANCE OF AREA SERVED)	
1/2 DIAGONAL =	47'-8"
MAXIMUM DEAD-END CORRIDORS (REFERENCE: OCCUPANCY CHAPTER AND TABLE A.7.6)	
20 FEET	
MAXIMUM COMMON PATH OF TRAVEL DISTANCE (REFERENCE: OCCUPANCY CHAPTER AND TABLE A.7.6)	
20 FEET/75 FEET	
MAXIMUM TRAVEL DISTANCE TO EXITS (REFERENCE: OCCUPANCY CHAPTER AND TABLE A.7.6)	
200 FEET	
*MAIN ENTRANCE MUST BE SIGNED TO ACCOMMODATE 1/2 OCCUPANT LOAD OF BUILDING	
EXTINGUISHMENT REQUIREMENTS NOT SPRINKLERED (NOT REQUIRED)	
DETECTION, ALARM, AND COMMUNICATION SYSTEMS NO	
ALLOWABLE HEIGHT AND BUILDING AREA PER IBC EQUIVALENT CONSTRUCTION TYPE	

BUILDING CODE INFORMATION	
APPLICABLE CODES	
IBC 2021	
ASSEMBLY GROUP A2 & A3 (IBC 2021 CHAPTER 9)	
OCCUPANT LOAD CALCULATIONS (TABLE 1004.1.2)	
ASSEMBLY 3 (WITHOUT FIXED SEATS) + 1 PERSON / 1 FT <sup>2</sup> + 2 WHEELCHAIR	1 PERSON / 1 FT <sup>2</sup> = 135 + 2 = 137 OCCUPANTS
ASSEMBLY 2	100 SF PER PERSON = 7 OCCUPANTS
TOTAL OCCUPANTS	144 OCCUPANTS
CONSTRUCTION TYPE(S) VB (SECTION 602)	
ALLOWABLE HEIGHT AND BUILDING AREA LIMITED BY TYPE OF CONSTRUCTION	
MAXIMUM HEIGHT IN STOREYS (SECTION 503 & 504, TABLE 504.4)	1
MAXIMUM AREA IN SQUARE FEET (SECTION 503, 506 & 507, TABLE 506.2) WITH AREA INCREASE, NS-A2 & NS-A3	10,500 SF
BUILDING AREA IN SQUARE FEET	7,840 SF

WIND SPEED DESIGN REQUIREMENTS	
THIS BUILDING SHALL BE DESIGNED WITH IBC SEC 1609 AS A FULLY ENCLOSED BLDG USING THE FOLLOWING INFORMATION:	
WIND DESIGN DATA: DETERMINATION OF WIND LOADS SHALL BE IN ACCORDANCE WITH IBC SEC 1609.3 (A), (B), OR (C) DEPENDING ON THE RISK CATEGORY	
ULTIMATE WIND SPEED =	142 MPH (IBC FIG 1609C)
NOMINAL WIND SPEED =	V <sub>50</sub> = 110 MPH
RISK FACTOR:	CATEGORY II
SURFACE ROUGHNESS =	B
TOPOGRAPHIC FACTOR =	1
EXPOSURE =	B
INTERNAL PRESSURE COEFFICIENT (ASCE 7-10 TABLE 26.11-1):	± 0.18
LIVE LOADS (IBC SEC 1607)	
ASSEMBLY FIXED SEATING (IBC TABLE 1607.1):	60 PSF
PLATFORMS (ASSEMBLY) (IBC TABLE 1607.1):	100 PSF
LOBBIES (IBC TABLE 1607.1):	100 PSF
CLASSROOMS (IBC TABLE 1607.1):	40 PSF UNIFORM, 1,000 LB CONCENTRATED
ROOF LIVE LOADS (IBC TABLE 1607.1):	20 PSF UNIFORM, 300 LB CONCENTRATED
SNOW LOADS (IBC TABLE 1608):	
GROUND SNOW LOAD (IBC FIG 1608.2):	5 PSF

FLOOD ZONE INFORMATION	
BASED ON THE SURVEY OF THIS PROPERTY BY J.V. BURKES AND ASSOCIATES, INC. THIS PROPERTY IS NOT IN A SPECIAL FLOOD HAZARD AREA. F.I.R.M. COMMUNITY MAP NO 225205142 E; REVISED 4/21/1999	
FLOOD ZONE:	B
BASE FLOOD ELEVATION	N/A NGVD
ELEVATIONS REFER TO NGVD 1929 DATUM	

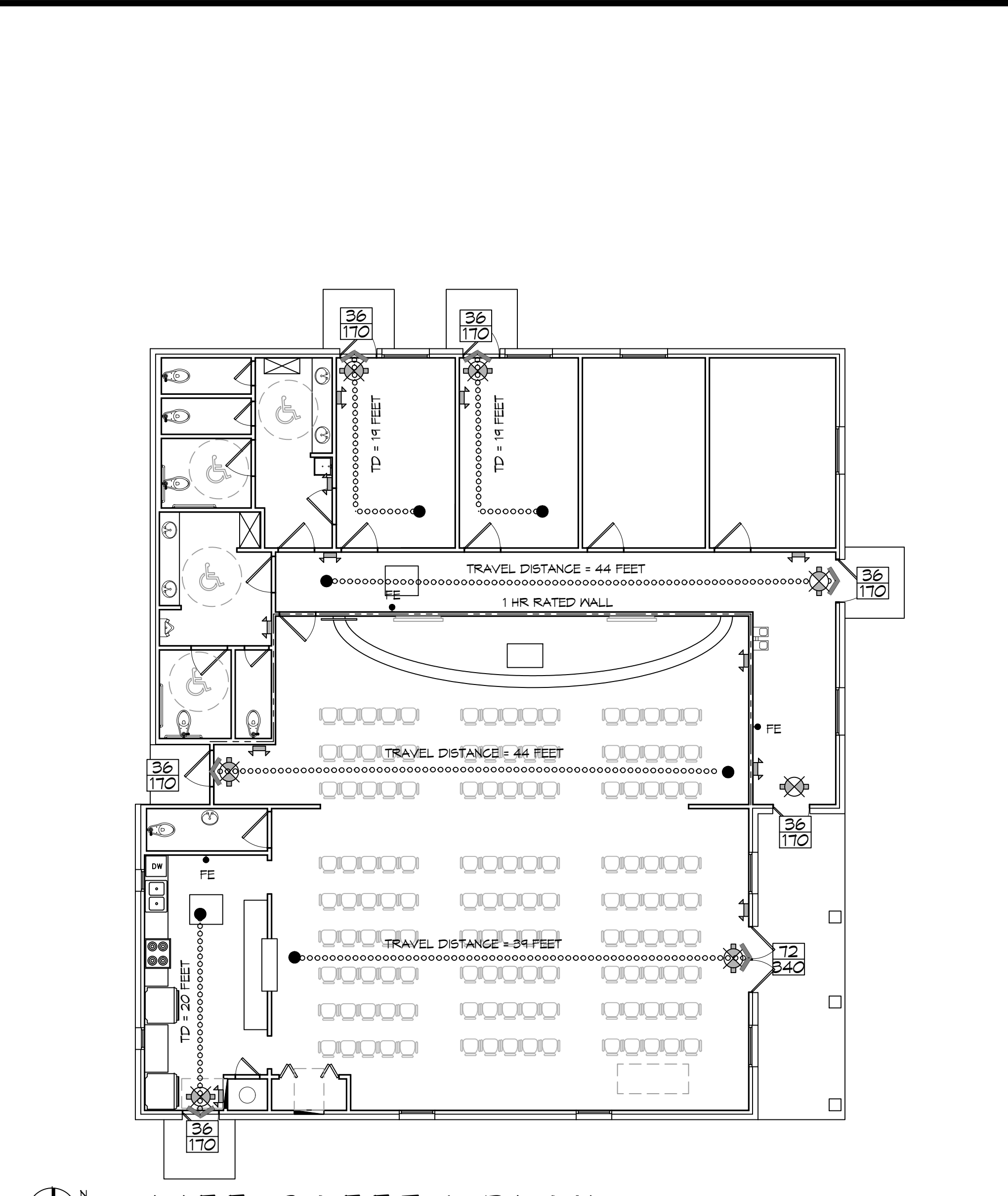
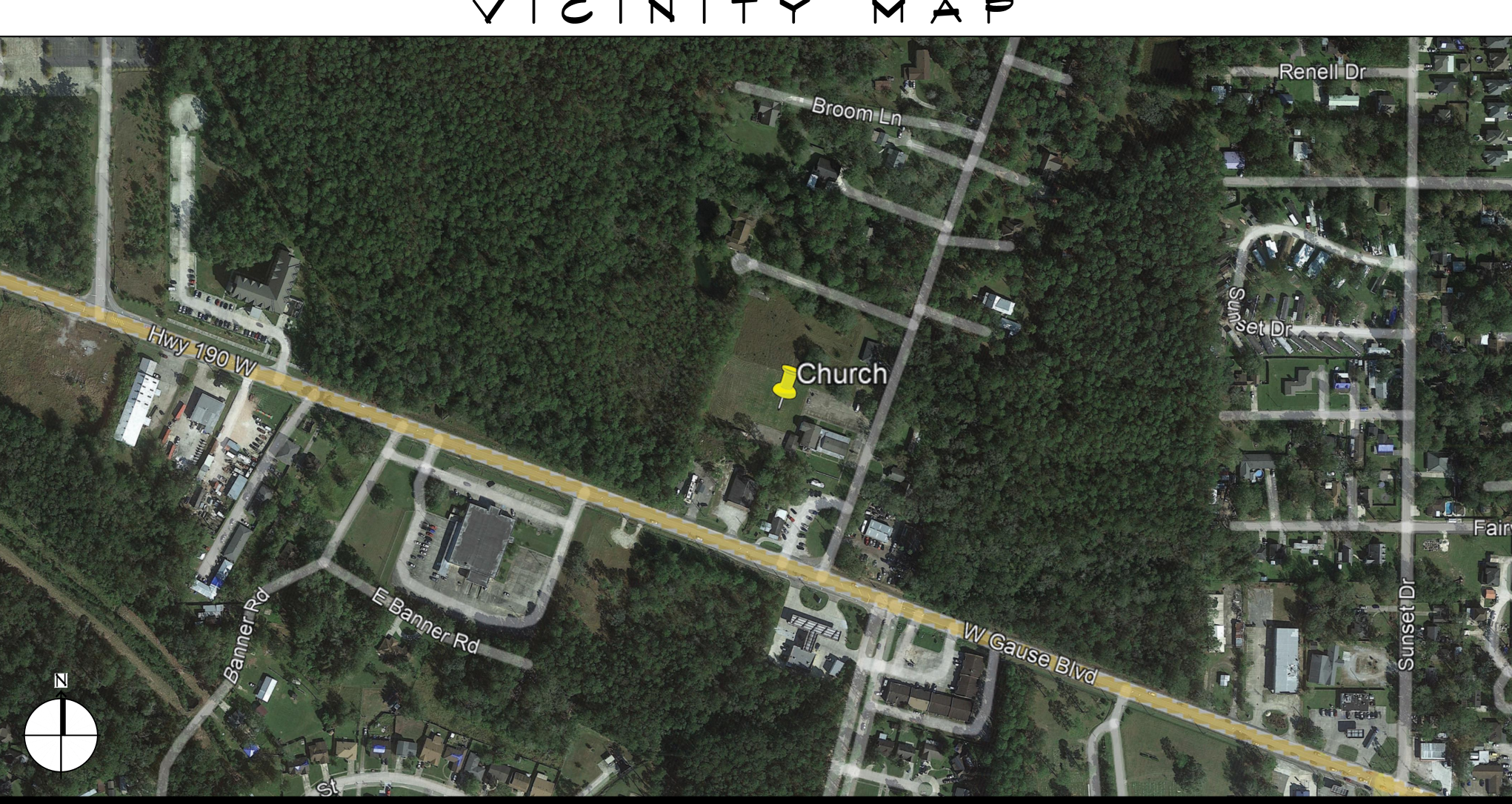
PROJECT STATISTICS	
SQUARE FOOTAGE	
EXIST. BUILDING	1416 SF
ADDITION	2209 SF
TOTAL ENCLOSED SPACE	3621 SF
PROJECT LOCATION:	
59143 BADON ROAD	OWNER: PASTOR DAN CARR
PEARL RIVER, LA 70460	

**DESIGN CRITERIA**

THE CONSTRUCTION FOR SAID RESIDENCE, WHERE BASIC WIND SPEED IS 130 MILES PER HOUR, WIND EXPOSURE ZONE B, IS DESIGNED IN ACCORDANCE WITH: AMERICAN FOREST AND PAPER ASSOCIATION (AF&PA) WOOD FRAME CONSTRUCTION MANUAL FOR ONE AND TWO FAMILY DWELLINGS (WFCM) 2001 EDITION AS WELL AS THE INTERNATIONAL RESIDENTIAL CODE (IRC) 2021 EDITION

COMMUNITY  
APTIST CHURCH  
MULTIPURPOSE  
BUILDING  
SLIDELL  
LOUISIANA

LIFE-SAFETY LEGEND	
SYMBOL	DESCRIPTION
	EXITS
	DOOR FIRE RATING (MINUTES)
	DOOR WIDTH/EGRESS CAPACITY
	EXIT LIGHT
	FIRE EXTINGUISHER AND CABINET
	FIRE EXTINGUISHER W/ WALL MTD BRACKET
	COMMON PATH OF TRAVEL
	TRAVEL DISTANCE
	DECISION POINT
	SMOKE PARTITION
	ONE-HOUR FIRE RATED PARTITION
	TWO-HOUR FIRE RATED PARTITION
	TWO-HOUR FIRE/SMOKE PARTITION
	FOUR-HOUR RATED PARTITION



SHEET INDEX	
SHEET #	SHEET TITLE
6001	GENERAL PROJECT, LIFE-SAFETY AND CODE INFORMATION
6002	ACCESSIBILITY INFORMATION
C101	SITE PLAN
C102	EXISTING SITE DRAINAGE PLAN
C103	SITE UTILITY PLAN/EROSION CONTROL
S101	FOUNDATION PLAN
S102	BLDG SECTION, CEILING JOIST AND ROOF PLAN
S103	TYPICAL CONNECTION DETAILS, SCHEDULES, AND NOTES
A101	FLOOR PLAN
A102	EXTERIOR ELEVATIONS
P101	PLUMBING FLOOR PLAN
M101	MECHANICAL FLOOR PLAN, DETAILS AND SCHEDULES
E101	POWER PLAN
E102	ELECTRICAL PANEL AND ONE LINE DIAGRAM
E103	PANEL SCHEDULES AND ONE LINE DIAGRAM

GENERAL NOTES	
1.	ALL MATERIALS AND WORK, INCIDENTAL TO THE CONSTRUCTION OF THIS PROJECT, SHALL CONFORM TO ALL GOVERNING CODES, AND REGULATIONS OF AGENCIES IN AUTHORITY.
2.	CONTRACTOR SHALL PROVIDE ALL PUBLIC PROTECTIONS NECESSARY AS REQUIRED BY LAW.
3.	THE DRAWINGS, SPECIFICATIONS AND ANY SUBSEQUENTLY ISSUED ADDENDA, AMENDMENTS OR SUCH CHANGE ORDERS APPROVED BY THE OWNER AND THE CONTRACTOR ARE PART OF THESE CONTRACT DOCUMENTS.
4.	DO NOT SCALE DRAWINGS. CONSULT WITH THE ARCHITECT REGARDING ANY ITEMS IN THE CONTRACT DOCUMENTS THAT REQUIRE CLARIFICATION.
5.	TYPICAL CONNECTION DETAILS, SCHEDULES, AND NOTES.
6.	TRASH SHALL BE REMOVED FROM THE SITE NOT LESS THAN TWICE MONTHLY.
7.	THE GENERAL CONTRACTOR SHALL VERIFY EXISTING CONDITIONS PRIOR TO COMMENCING WORK AND REPORT ANY AND ALL DISCREPANCIES TO THE ARCHITECT.
8.	CONTRACTOR VEHICLES AND EQUIPMENT NECESSARY FOR CONSTRUCTION MAY BE PARKED ON THE SITE. OTHER VEHICLES PARKED ON THE SITE REQUIRE THE OWNER'S PERMISSION.
9.	NAMING A CERTAIN BRAND, MAKE OR MANUFACTURER IS TO DESIGNATE THE GENERAL STYLE, TYPE, CHARACTER AND QUALITY STANDARD OF THE PRODUCT DESIRED. SUBSTITUTION REQUESTS MUST BE SUBMITTED PRIOR TO BIDDING.
10.	ALL MATERIALS/EQUIPMENT SHALL BE INSTALLED PER MANUFACTURER'S RECOMMENDATIONS. WORK NOT CONSISTENT WITH MANUFACTURER'S RECOMMENDATIONS WILL BE REJECTED BY OWNER/ARCHITECT.

DAMMON ENGINEERING, INC.

LOUISIANA & MISSISSIPPI

Chief Engineer: Brian Mirtich, PE  
 554 Old Spanish Trail  
 Slidell, LA 70458  
 www.dammonengineering.com  
 info@dammonengineering.com  
 PH: 985.649.5832 F: 985.641.5950

#	DESCRIPTION	DATE

COMMUNITY CHURCH

59143 BADON RD  
 SLIDELL, LA 70460  
 JOB No: 2493 DATE: 10/10/2023  
 DRAWN BY: CKD CHECKED BY: CKD

GENERAL PROJECT, LIFE SAFETY AND CODE INFORMATION

SHEET TITLE:  
 GENERAL PROJECT, LIFE SAFETY AND CODE INFORMATION  
 DRAWING NUMBER:

6002

SHEET No: 1 of 15