

THE USER SHALL BE RESPONSIBLE FOR OBTAINING ALL NECESSARY PERMITS AND APPROVALS FROM THE APPROPRIATE AGENCIES AND AUTHORITIES. THE USER SHALL BE RESPONSIBLE FOR OBTAINING ALL NECESSARY PERMITS AND APPROVALS FROM THE APPROPRIATE AGENCIES AND AUTHORITIES.

Symbol	Label	Qty	Arrangement	Manufacturer & Part Number	LLF	Lum. Lumens
□	A	29	SINGLE	VISION ENGINEERING VHB3-L1-90D-35K-X-X-CM-EWG (derated from 50K IES file)	0.740	12970

Label	CalcType	Units	PtSpclr	PtSpctb	Avg	Max	Min	Avg/Min	Max/Min	Description
Open Area Bball Crt & Play Area_	Illuminance	Fc	3	3	36.35	42	16	2.27	2.63	Readings taken at 0'-0" AFF

GENERAL LIGHTING NOTES

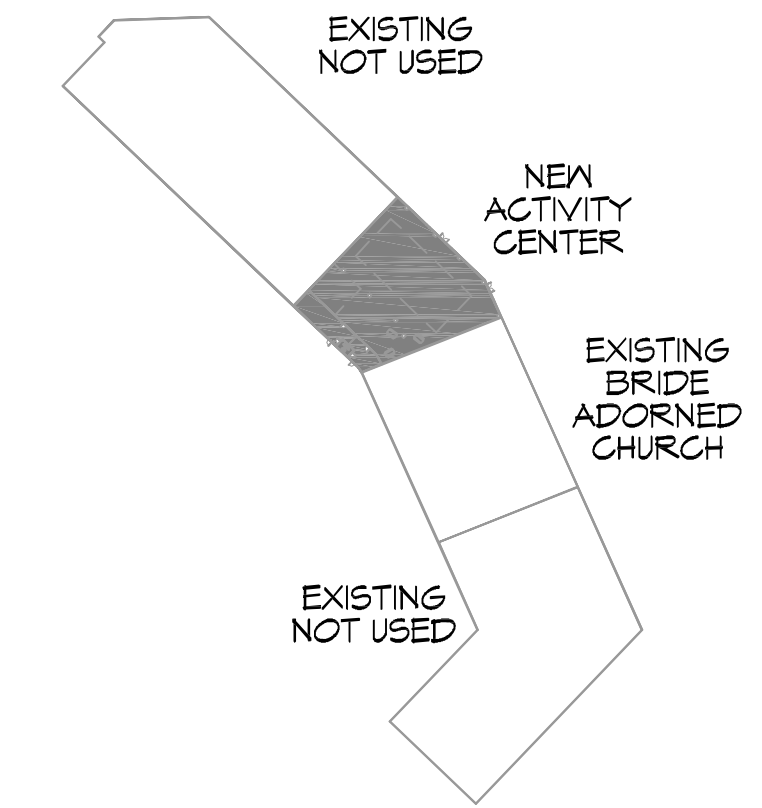
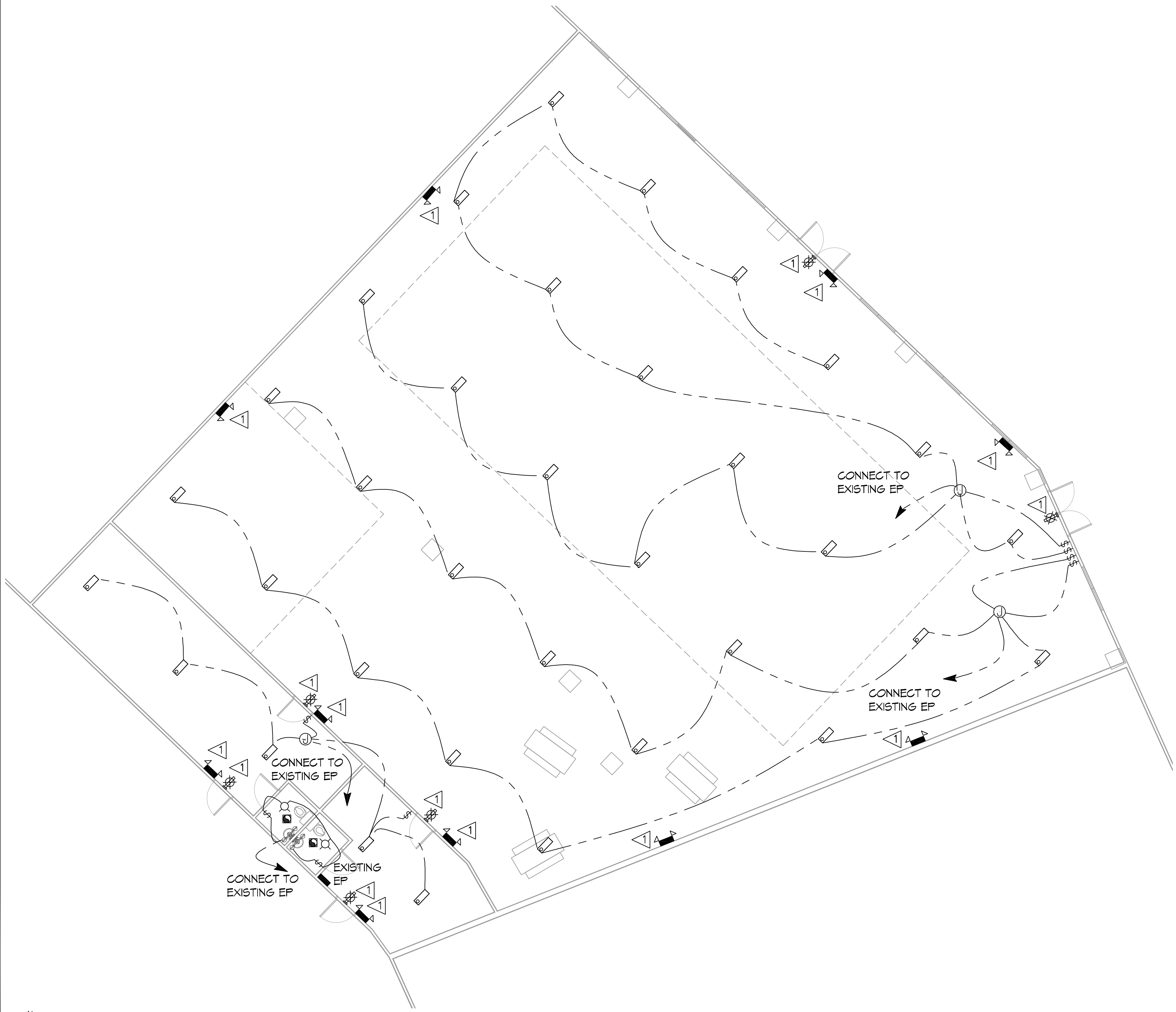
- ALL WORK SHALL COMPLY WITH APPLICABLE NATIONAL, STATE, AND LOCAL CODES, RULES, REGULATIONS, AND REQUIREMENTS OF THE SERVICE UTILITY COMPANY.
- REFER TO ARCHITECTURAL DRAWINGS FOR EXACT LOCATION AND MOUNTING INSTRUCTIONS FOR ALL LIGHT FIXTURES. NOTIFY THE ARCHITECT AND ENGINEER OF ANY DISCREPANCIES BETWEEN THESE PLANS AND THE ARCHITECTURAL PLANS RELATING TO QUANTITY, TYPE AND LOCATION OF DEVICES AND/OR FIXTURES.
- WHEN SPECIFIC LIGHT FIXTURE HAS BEEN SPECIFIED IN THE FIXTURE SCHEDULE, ELECTRICAL SHALL PROVIDE COMPLETE ASSEMBLY INCLUDING ALL PARTS AND HARDWARE TO INSURE PROPER FUNCTIONING FIXTURE.
- ALL CONDUCTORS SHALL BE #12 AWG UNLESS NOTED OTHERWISE.
- ALL 120V RUNS LONGER THAN 60 FEET SHALL BE #10 AWG AND 277V RUNS LONGER THAN 150 FEET SHALL BE #10 AWG UNLESS NOTED OTHERWISE.
- ALL CONDUCTORS SHALL BE COPPER.
- WHERE CONDUCTOR SIZES ARE NOTED ON DRAWINGS, THAT WIRE SIZE SHALL BE THROUGH THE ENTIRE RUN UNLESS OTHERWISE NOTED.
- MOUNTED LIGHT SWITCHES 48" AFF UNLESS NOTED OTHERWISE ON ARCHITECTURAL DRAWINGS.
- ALL GANGED SWITCHES SHALL HAVE A COMMON SEAMLESS FACEPLATE. EACH MULTI-GANGED BOX SHALL BE NO MORE THAN SIX (6) SWITCHES WIDE. WHERE MORE THAN SIX (6) SWITCHES ARE SHOWN AT ONE (1) LOCATION, ADDITIONAL MULTI-GANGED BOXES SHALL BE STACKED VERTICALLY AND THE WIDTH OF THE MULTI-GANGS SHALL BE AS EVEN AS POSSIBLE.
- EACH DIMMER SWITCH SHALL HAVE A WATTING RATING 25% HIGHER THAN THE TOTAL WATTAGE OF ALL LIGHTS TO BE CONTROLLED BY THE DIMMER. DIMMER SIZES 600, 1000, 1500, AND 2000 WATTS, LUTRON NOVA T-STAR. WHERE SWITCHES ARE GANGED WITH DIMMERS, THE SWITCHES SHALL ALSO BE LUTRON NOVA T-STAR. FLUORESCENT AND LOW VOLTAGE DIMMERS HAL LBE LUTRON NOVA T-STAR.
- WHERE FLUORESCENT FIXTURES ARE SHOWN TO BE DIMMED, THE FIXTURES SHALL HAVE DIMMING TYPE BALLASTS WHICH ARE COMPATIBLE WITH THE SPECIFIED DIMMERS.
- WHERE LED FIXTURES/LAMPS ARE SHOWN TO BE DIMMED, THE DIMMER SHALL BE COMPATIBLE WITH THE FIXTURE/LAMP SPECIFIED OR PROVIDED.
- ALL EMERGENCY LIGHT FIXTURES SHALL HAVE 90 MINUTE BATTERY BACKUP WITH INTEGRAL TEST BUTTON AND SHALL BURN CONTINUOUSLY.
- ALL FLUORESCENT FIXTURES THAT UTILIZE DOUBLE-ENDED LAMPS AND CONTAIN BALLASTS SHALL BE PROVIDED WITH A DISCONNECTING MEANS IN ACCORDANCE WITH NEC 410.136.

LEGEND

- | | |
|--|--------------------------------------|
| ⚡ EMERGENCY LIGHT FIXTURE (12w) | □ 4'X24" SUSPENDED LED LIGHT FIXTURE |
| ⚡ EXIT LIGHT FIXTURE - WALL MOUNTED (10w) | Ⓜ ELECTRIC PANEL |
| Ⓜ WALL-MOUNTED VANITY LIGHT FIXTURE (100w) | ⚡ CIRCUIT HOME RUN |
| Ⓜ JUNCTION BOX | Ⓜ LIGHT SWITCH 120V COMMERCIAL GRADE |
| Ⓜ CEILING MOUNTED LIGHT FIXTURE | Ⓜ VENT/EXHAUST FAN ONLY |
| | Ⓜ LIGHTING WIRE |

KEYED NOTES

- PROVIDE CONNECTION TO UN-SWITCHED HOT OF LIGHTING CIRCUIT AND SHALL HAVE 90 MINUTE EMERGENCY BATTERY BACKUP.



DAMMON ENGINEERING, INC.
 LOUISIANA & MISSISSIPPI
 Chief Engineer: Brian A. Mitchell, PE
 504 Old Spanish Trail
 Slidell, LA 70468
 www.dammonengineering.com
 info@dammonengineering.com
 PH: 985.649.2342, FX: 985.649.2320

REVISIONS	DATE	DESCRIPTION



PRIORITY
ADORNED
CHURCH
DRIVER
BRIDE
ADORNED
CHURCH
 1000 CARUSO BLVD.
 SUITES 418 AND 421
 SLIDELL, LA 70461
 JOB No: 6/5/2021
 DATE: 6/5/2021
 DRAWN BY: RLD
 CHECKED BY: CND

SHEET TITLE:
LIGHTING PLAN
 DRAWING NUMBER:
E101
 SHEET No: 4 of 4

LIGHTING PLAN
 SCALE: 3/16"=1'-0"

KEY PLAN
 SCALE: 1/128"=1'-0"