

MASONRY LEGEND

- LINTEL ABOVE W/ ANCHOR BOLTS IN BOND BEAM
- MASONRY CONTROL JOINT. SEE DETAIL THIS SHEET.
- CONT NO. 5 VERT REINF. W/ 3000 PSI CONG FILL
- PLUMBING VENT STACK

1. WHERE HORIZ. REINF IS INTERRUPTED BY OPENING OR CONTROL JOINT PROVIDE STANDARD ACI HOOK W/ VERT. WALL REINF. @ END CELL.

2. SPLICES IN VERT. REINF. REF. WALL SECTIONS.

3. ALL VERT. BARS @ DOOR JAMBS TO BE FULL HEIGHT.

4. CONTINUE VERT. WALL REINF. OVER OPENING. ANCHOR VERT. REINF. INTO LINTEL BEAM W/ STANDARD ACI HOOK.

5. EXTEND LINTEL A MIN. 2'-0" BEYOND FACE OF OPENING EACH SIDE FOR STRAIGHT LINTEL REINF. & 1'-0" FOR LINTEL REINF. W/ STANDARD ACI HOOK.

JAMB

8" CMU U-BLOCK BOND BEAM W/ HORIZ. REINF. PER LINTEL SCH.

LINTEL

16" CMU U-BLOCK BOND BEAM W/ HORIZ. REINF. PER LINTEL SCH.

CONT. HORIZ. CORNER BAR MIN. 24" LONG EACH LEG @ EACH BOND BEAM

VERT. WALL REINF. IN CORNER CELL SIZE BAR TO MATCH VERT. WALL REINF. SCH

EXTEND HORIZ. LADDER TYPE JOINT REINF. TO END OF WALL, EACH WAY, SO THAT IT LAPS @ THE CORNER

LADDER TYPE JOINT REINF INTERRUPT @ CONTROL JOINT

PROVIDE VERT. WALL REINF. IN 1ST CELL OF EACH SIDE CONTROL JOINT. SIZE BARS TO MATCH VERT. WALL REINF. SCH

3000 PSI PEA-GRAVEL CONG FILL

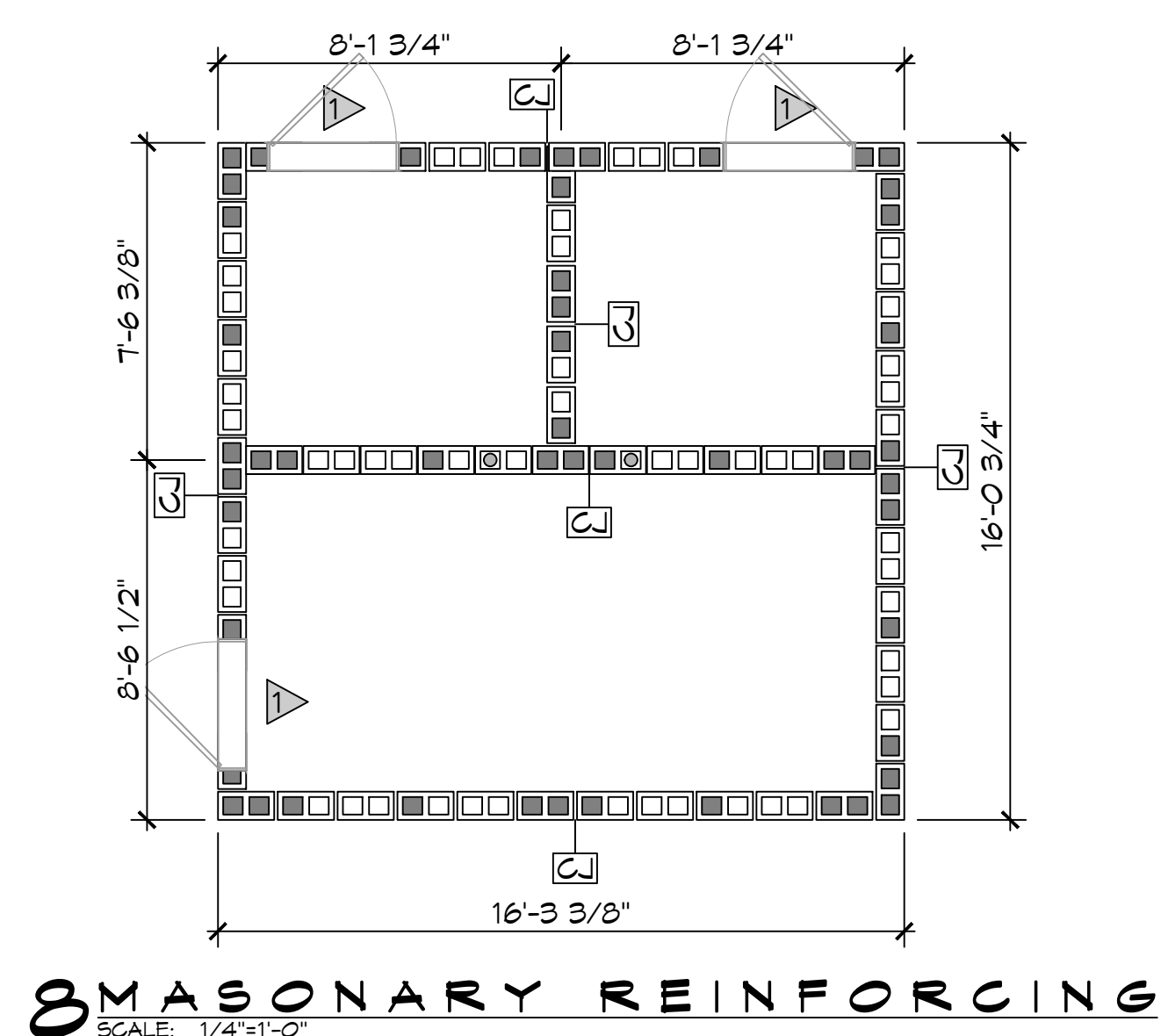
PREFORMED CONTROL JOINT GASKET

CONTROL JOINT SEALER & BACKER ROD @ INTERIOR FACE

MASONRY DETAILS

SCALE: 1/2"=1'-0"

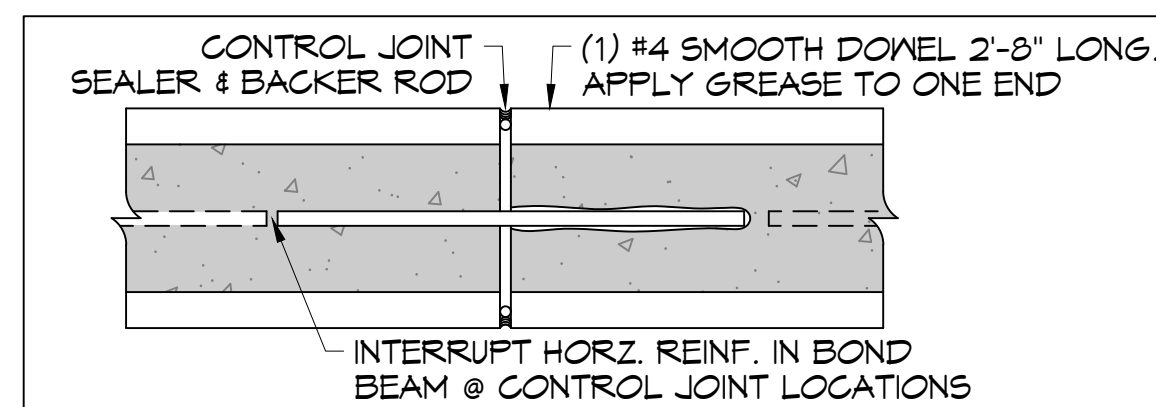
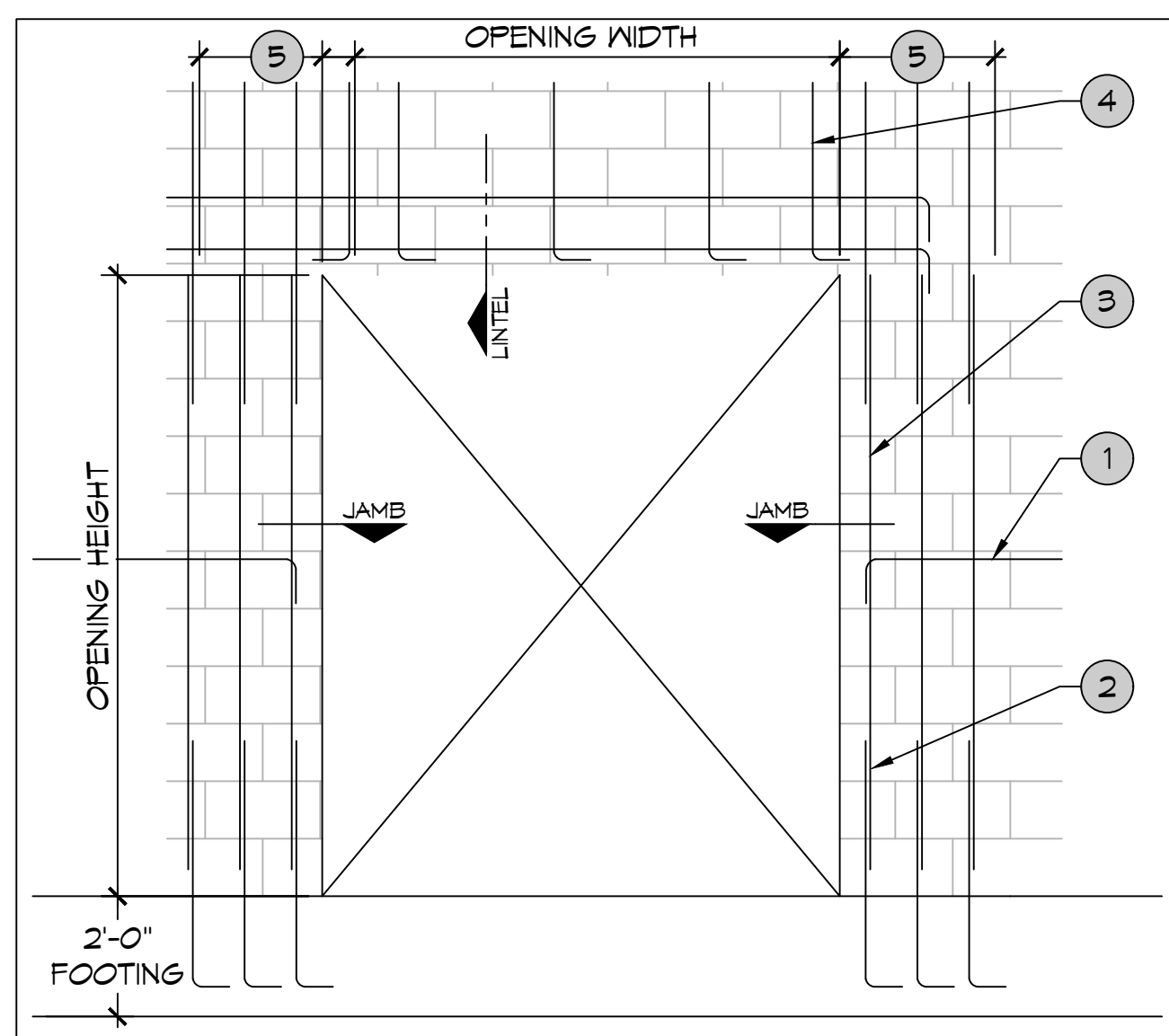
TYPICAL



CMU LINTEL SCHEDULE

WIDTH	CLEAR SPAN	DEPTH	HORIZ REINF
8" @ ALL	UP TO 3'-4"	8"	(1) #6 BTM
CMU WALLS	UP TO 6'-4"	16"	(1) #6 T & B
	UP TO 14'-0"	24"	(2) #6 T & B

NOTE:
PROVIDE 3000 PSI PEA-GRAVEL CONG FILL FOR ALL LINTELS.



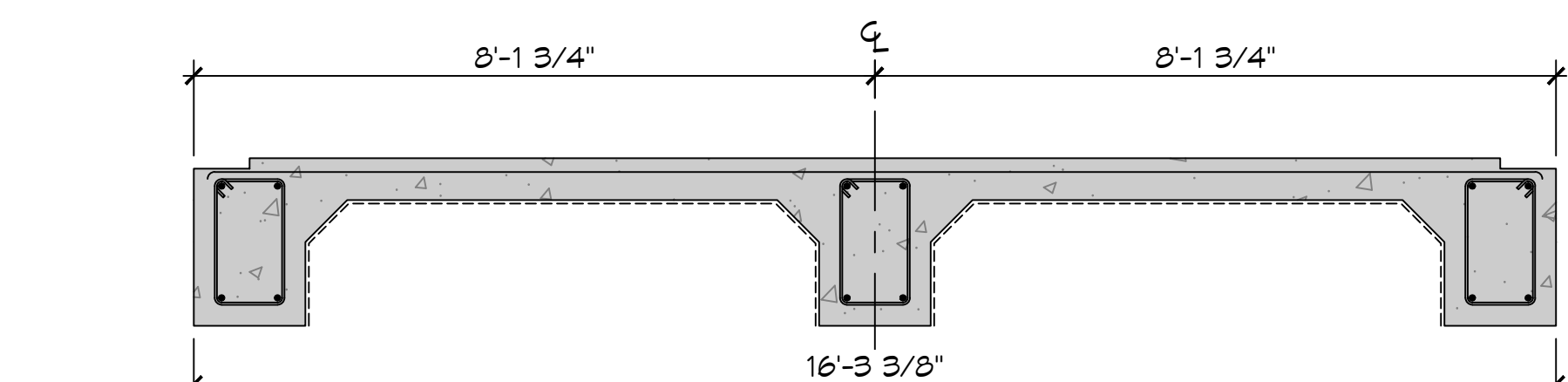
- NOTE:
- MAX JOINT SPACING = 15'
 - PROVIDE MIN 50% EXTENSIBILITY OF JOINT MATERIAL.
 - REF ARCH FOR JOINT LOCATIONS

FOUNDATION PLAN NOTES

- THE INTENT OF THIS PLAN IS TO PROVIDE INFORMATION FOR PLACEMENT OF A CONVENTIONAL SLAB. IT IS THE RESPONSIBILITY OF THE GENERAL CONTRACTOR TO VERIFY ALL DIMENSIONS, BRICK LEDGES, BLOCK OUTS, OFFSETS, ETC., SHOWN ON THESE PLANS, TO ASSURE AGREEMENT WITH ARCHITECTURAL PLANS.
- ALL DIMENSIONS ARE EDGE OF CONCRETE (EOC) TO EDGE OF CONCRETE (EOC) UNLESS NOTED OTHERWISE.
- VERIFY ALL PLUMBING ROUGH-IN LOCATIONS & ELECTRICAL ROUGH-IN LOCATIONS. ALL PIPES, CONDUITS, THIMBLES, ETC. TO PASS THROUGH CONCRETE SLAB OR BEAM, MUST NOT CONFLICT WITH STEEL REINFORCING.
- CONCRETE MIX SHALL HAVE A MINIMUM COMPRESSIVE STRENGTH OF 4000 PSI AT 28 DAYS. CONCRETE MIX SHALL BE IN ACCORDANCE WITH ACI-318. IT IS RECOMMENDED THAT A CURING COMPOUND BE USED TO CONTROL SHRINKAGE.
- ALL CONVENTIONAL REINFORCING STEEL SHALL MEET ASTM-A615 (GRADE 60) AND SHALL BE DETAILED AND ACCESSORIES PROVIDED IN ACCORDANCE WITH THE LATEST A.C.I. MANUAL OF STANDARD PRACTICE FOR DETAILING REINFORCED CONCRETE STRUCTURES. ALL WOVEN WIRE FABRICS SHALL CONFORM TO ASTM A185.
- CONCRETE SHALL HAVE 3" COVER AT BOTTOM OF GRADE BEAMS AND 2" COVER IN BEAM SIDES AND TOPS.
- ONE LAYER OF POLYETHYLENE VAPOR BARRIER SHALL BE PLACED UNDER ALL CONCRETE. VAPOR RETARDER TO BE MINIMUM 15 MIL THICKNESS, ASTM E 1745 CLASS A, PERMEANCE LESS THAN 0.01 PERMS, EQUAL TO STEGO INDUSTRIES STEGO WRAP, ECOSHIELD-E 15 MIL BY EPFO, OR IRONBAR 15 BY FLATIRON FILMS. PROVIDE APPROPRIATE ACCESSORIES FOR A COMPLETE SYSTEM.
- ALL REINFORCING STEEL AND MESH SHALL BE SECURELY SUPPORTED TO PREVENT BOTH VERTICAL AND HORIZONTAL MOVEMENT DURING CONCRETE PLACEMENT.
- THE CONTRACTOR SHALL VERIFY ALL DROPS, OFFSETS, BRICK LEDGES, DIMENSIONS AND CONFIGURATIONS. CONTRACTOR MUST BE RESPONSIBLE FOR SAME.
- GRADE BEAM DIMENSIONS MAY VARY BY -5%, +20%.
- SQUARE FOOTINGS AND CONTINUOUS SPREAD FOOTINGS SHALL BEAR ON COMPACTED SOIL NO LESS THAN 36 INCHES BELOW FINISHED GRADE. SQUARE FOOTINGS AND CONTINUOUS SPREAD FOOTINGS HAVE BEEN DESIGNED FOR MAXIMUM NET ALLOWABLE BEARING PRESSURES OF 3100 PSF AND 2600 PSF, RESPECTIVELY, BASED ON DEAD LOADS AND DESIGN LIVE LOADS.
- ALL SOIL BELOW SLAB SHALL RECEIVE TERMITE TREATMENT IN ACCORDANCE WITH SPECIFICATIONS.
- AS A MINIMUM THE INSTALLATION OF RIGID FLOOR TILES, BRICK ETC. SHALL BE OVER AN ELASTIC BOND BREAKER. ANY CRACKS IN CONCRETE FLOOR SHALL BE TREATED PRIOR TO INSTALLATION OF TILES. ELASTOMETIC ADHESIVE IS RECOMMENDED FOR CERAMIC FLOOR TILES. WHERE DECORATIVE CONCRETE IS USED ADDITIONAL REINFORCEMENT WILL BE REQUIRED.

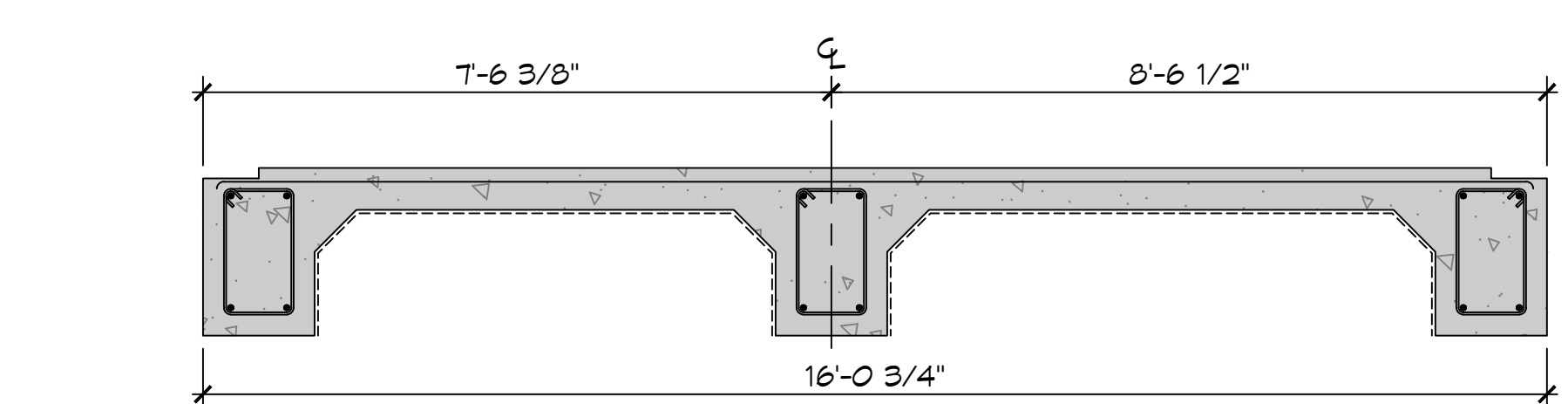
FOUNDATION PLAN

SCALE: 1/2"=1'-0"



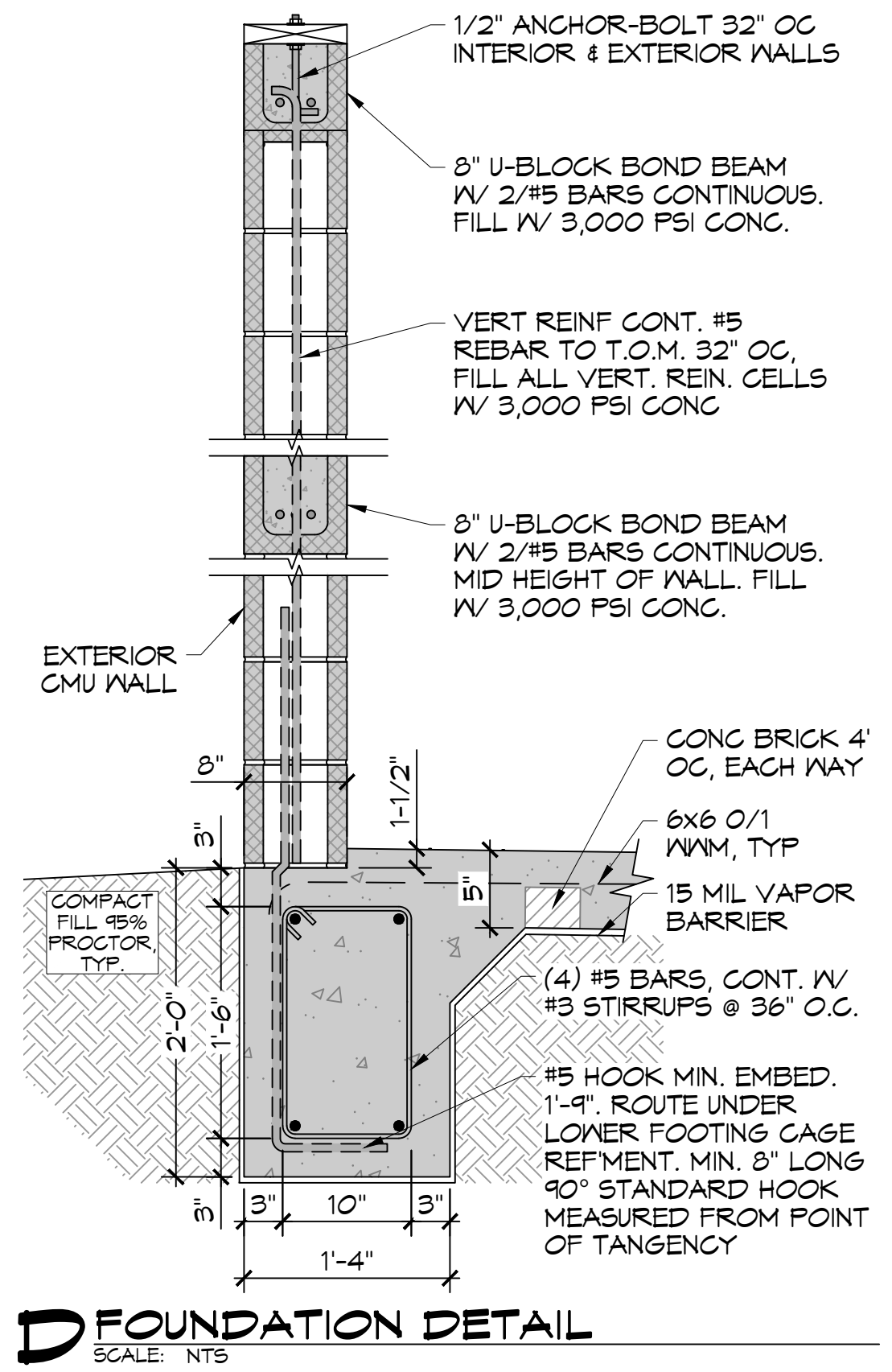
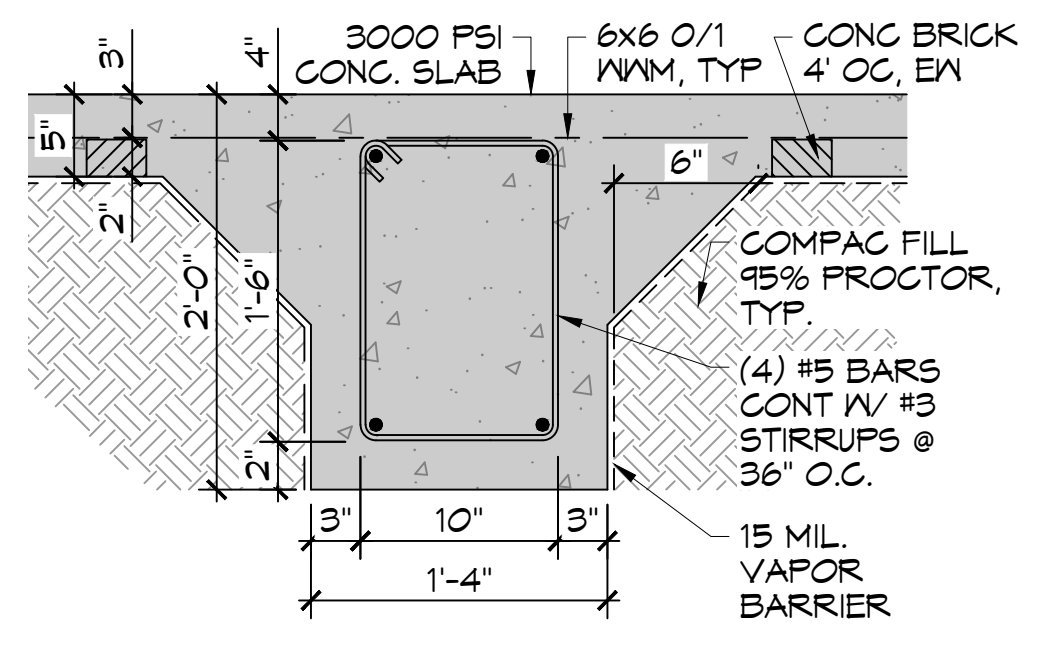
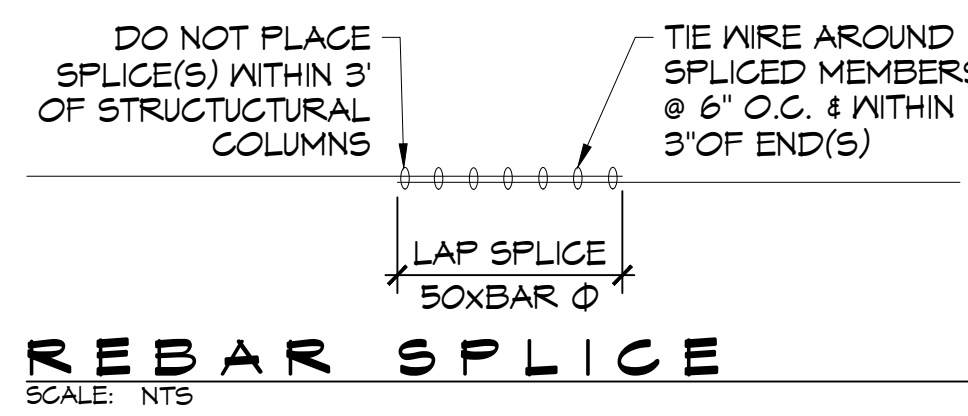
FOUNDATION SECTION

SCALE: 1/2"=1'-0"



FOUNDATION SECTION

SCALE: 1/2"=1'-0"



DAMMON ENGINEERING, INC.

LOUISIANA & MISSISSIPPI

Chief Engineer: Brian A. Misch, PE
554 Old Spanish Trail
Slidell, LA 70458
Phone: 985.649.5832 F: 985.641.5950
www.dammonengineering.com
info@dammonengineering.com

#	DESCRIPTION	DATE



FIRST BAPTIST CHURCH

4411 FORTCHARTRAIN DR.
SLIDELL, LA 70458

JOB No: 06-10-2022
DATE: 06-10-2022
CHECKED BY: JAS
DRAWN BY: TNT

SHEET TITLE: FOUNDATION PLAN

DRAWING NUMBER: **S101**

SHEET No: 4 of 10