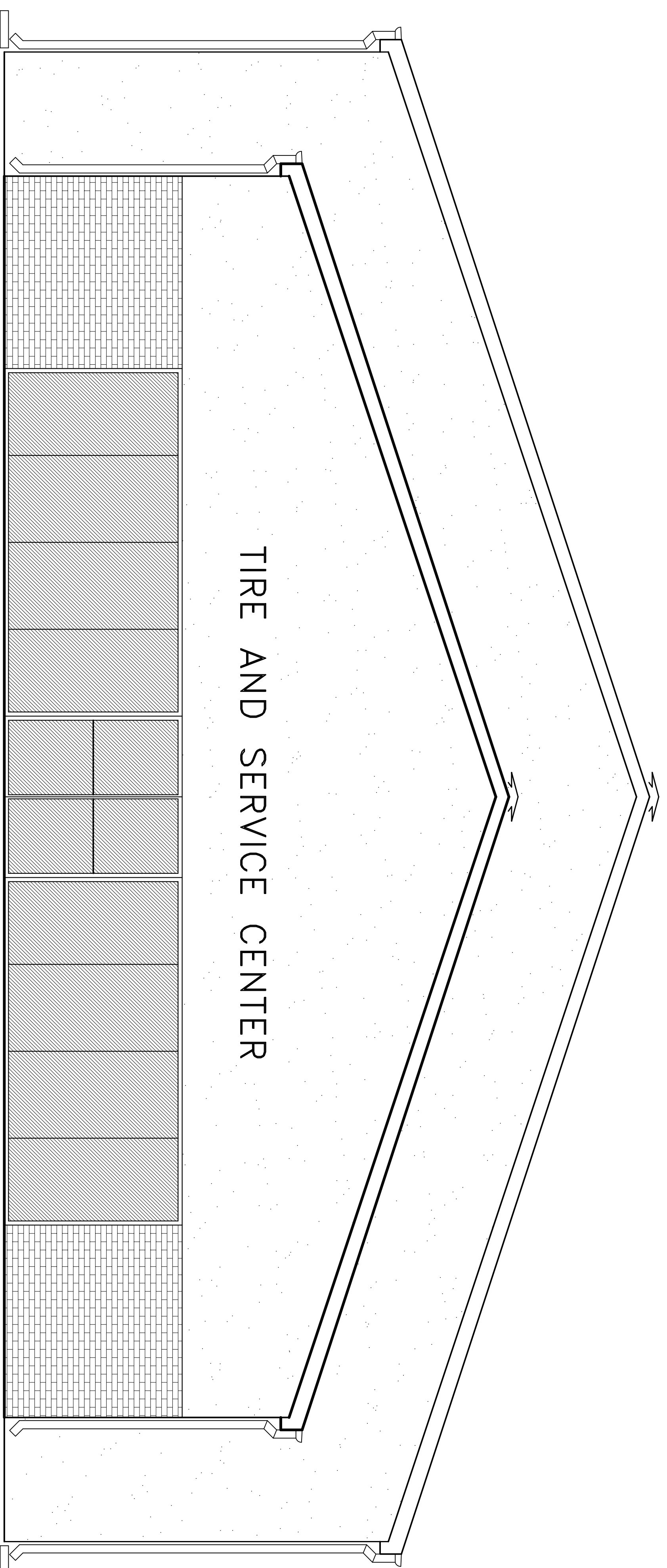


# TIRE AND SERVICE CENTER

MILITARY ROAD  
SLIDELL, LOUISIANA



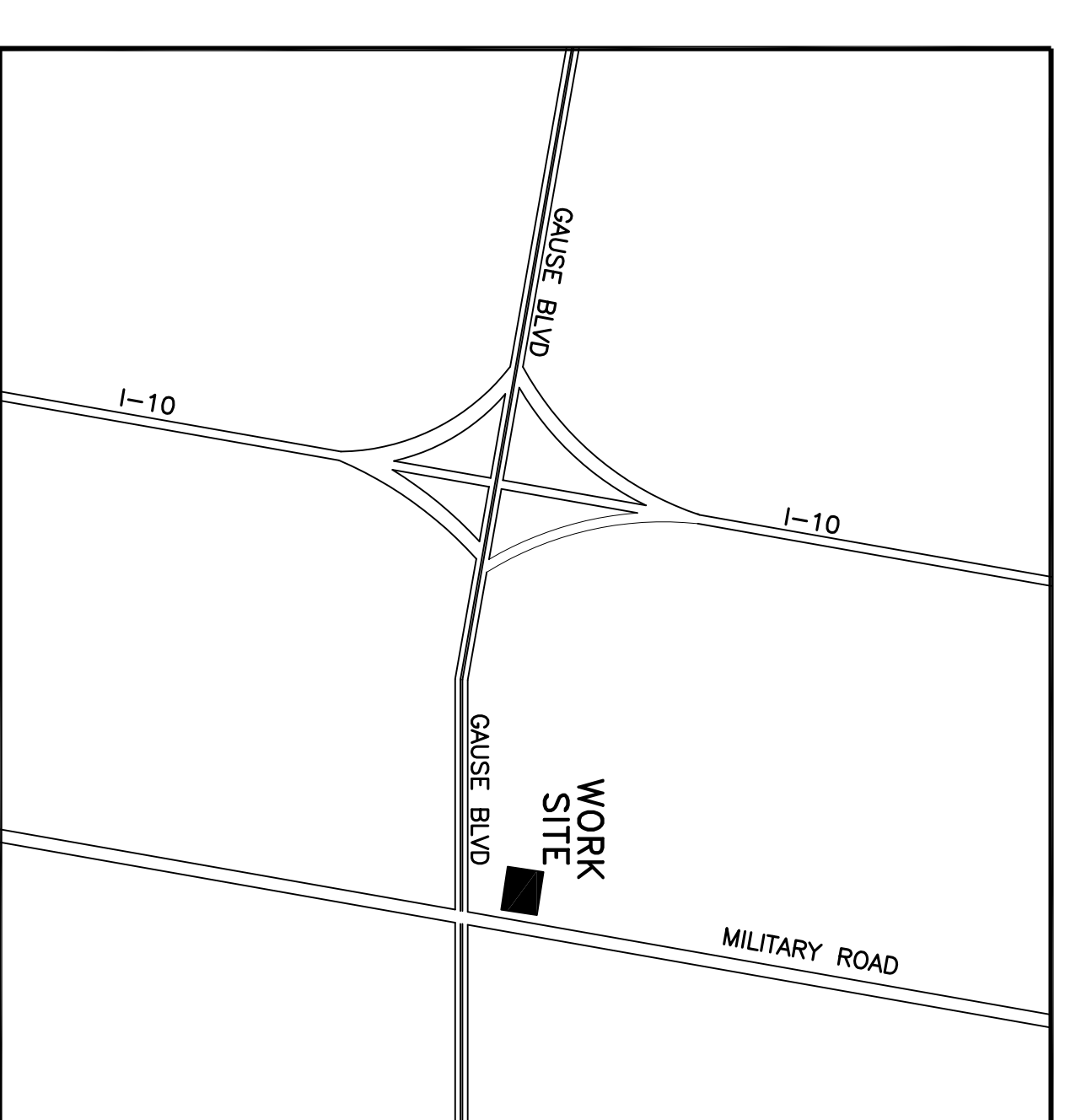
DWG.#	DRAWING NAME
C-1	SITE PLAN
C-2	PAVING PLAN
L-1	LANDSCAPE PLAN
F-1	COLUMN PLAN
A-1	FLOOR PLAN
A-2	SECTION
A-3	ELEVATIONS
A-4	REFLECTED CEILING PLAN
E-1	ELECTRICAL PLAN
E-2	PARKING LOT LIGHTING
M-1	MECHANICAL PLAN
P-1	PLUMBING PLAN

INTERNATIONAL BUILDING CODE  
OCCUPANCY: M-NONSEPARATED USE

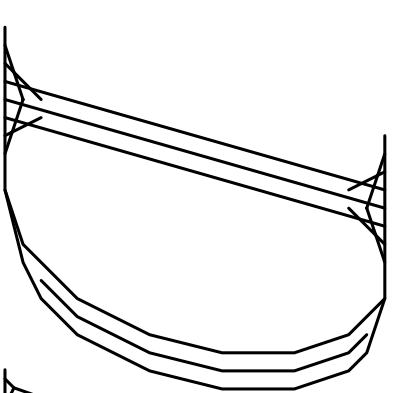
BUILDING AREA:	
SALES AREA	1,500 SQ. FT.
MOTOR VEHICLE SERVICE AREA	4,704 SQ. FT.
TIRE STORAGE AREA	1,317 SQ. FT.
<b>TOTAL</b>	<b>7,521 SQ. FT.</b>

- BUILDING HEIGHT: 16'
- CONSTRUCTION TYPE: II B
- (TABLE 503) ALLOWABLE 12,500 SQ. FT., FOUR STORIES
- (TABLE 601) FIRE RESISTANCE RATING:
  - STRUCTURAL FRAME-0 HOURS
  - BEARING WALLS (INTERIOR AND EXTERIOR)-0 HOURS
  - FLOOR CONSTRUCTION-0 HOURS
  - ROOF CONSTRUCTION-0 HOURS
- (TABLE 602) FIRE RESISTANCE RATING FOR EXTERIOR WALLS
  - FIRE SEPARATION DISTANCE>30' FOR ALL WALLS-0 HR.
- (TABLE 704.8) MAX. AREA OF WALL OPENINGS
  - FIRE SEPARATION DISTANCE>30' -NO LIMIT

NOTES: IBC 903.2.10.2 - 20,000 CU. FT. OF TIRE STORAGE ALLOWED:  
19,872 CU. FT. PROVIDED



VICINITY MAP  
N.T.S.



DAMMON ENGINEERING

ARCHITECTS - ENGINEERS

2000 OLD SPANISH TRAIL STE. 100

985-649-5832

SLIDELL, LA. 70458

WEB-DAMMONENGINEERING.COM

INC.