

**DAMMON**  
ENGINEERING, INC.

CHIEF ENGINEER  
EMMETT  
DAMMON, P.E.  
CHIEF ARCHITECT  
ROBERT  
WILTSE

1095 FLORIDA AVENUE  
SLIDELL, LA, 70456  
OFFICE: 985-649-5332  
FAX: 985-641-5950

WEBSITE:  
WWW.DAMMONENGINEERING.COM  
EMAIL:  
DAMMONENG@Bellsouth.net

ARCHITECTURE  
ENGINEERING  
STUDIES  
PLANNING  
INVESTIGATION  
EXPERT WITNESS

NEW  
PARKING  
LOT

HONAKER  
FUNERAL HOME  
1751 GAUSE BLVD W,  
SLIDELL, LA

COPY  
OF  
SURVEY

REV:

SCALE: AS NOTED

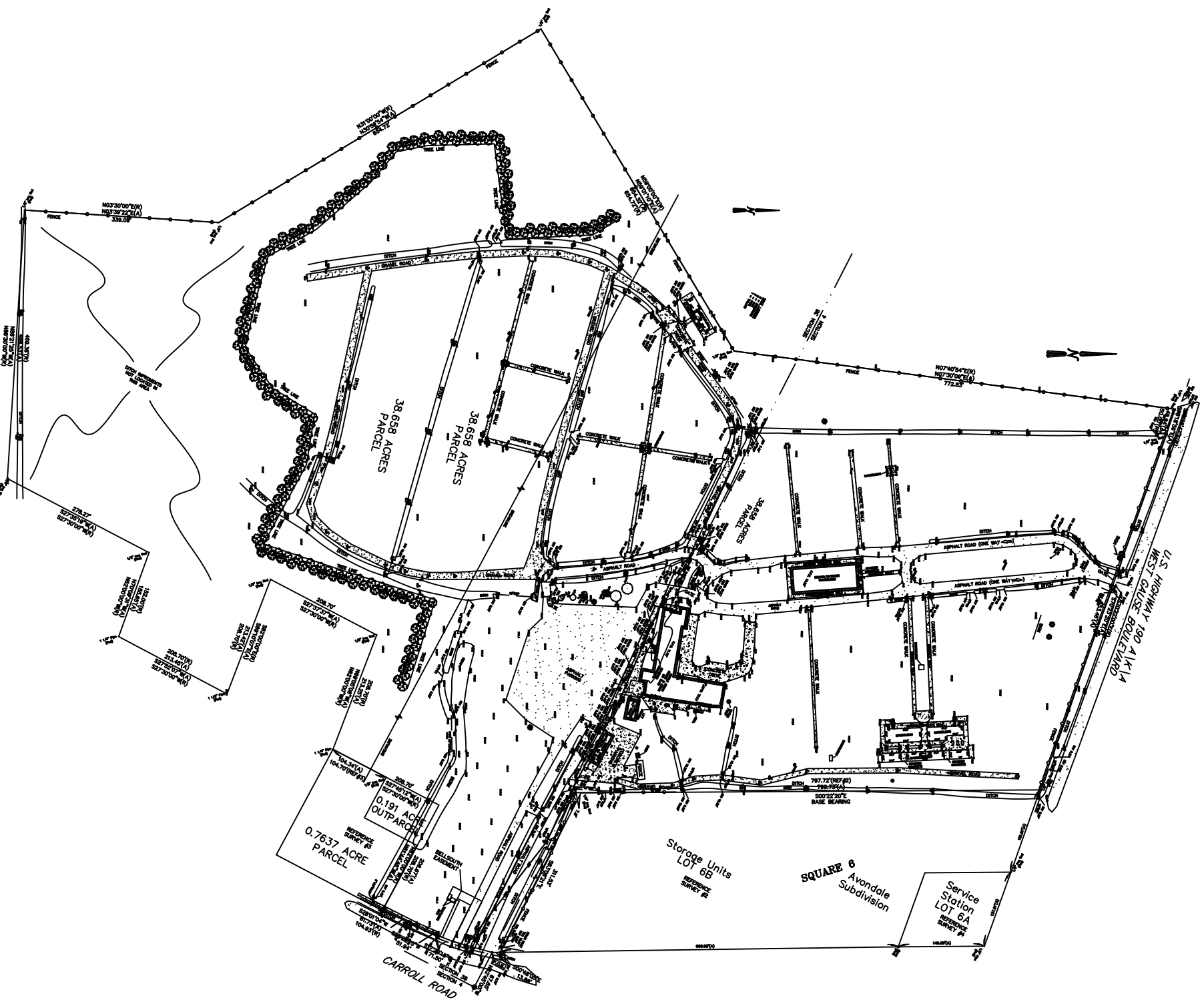
JOB#: 1999

DATE: 10-24-08

SHEET

C-1

OF



COPY OF SURVEY  
SCALE: 1"=100'-0"

