

DAMMON
ENGINEERING, INC.

CHIEF ENGINEER
EMMETT
DAMMON, P.E.

CHIEF ARCHITECT
ROBERT
WILTSE

1095 FLORIDA AVENUE
SLIDELL, LA, 70456
OFFICE: 985-649-5332
FAX: 985-641-5950

WEBSITE:
WWW.DAMMONENGINEERING.COM
EMAIL:
DAMMONENG@BELL.SOUTH.NET

ARCHITECTURE
ENGINEERING
STUDIES
PLANNING
INVESTIGATION
EXPERT WITNESS

NEW
PARKING
LOT

HONAKER
FUNERAL HOME
1751 GAUSE BLVD W,
SLIDELL, LA

PARTIAL PAVING
DIMENSIONAL
PLAN

REV:

SCALE: AS NOTED

JOB#: 1999

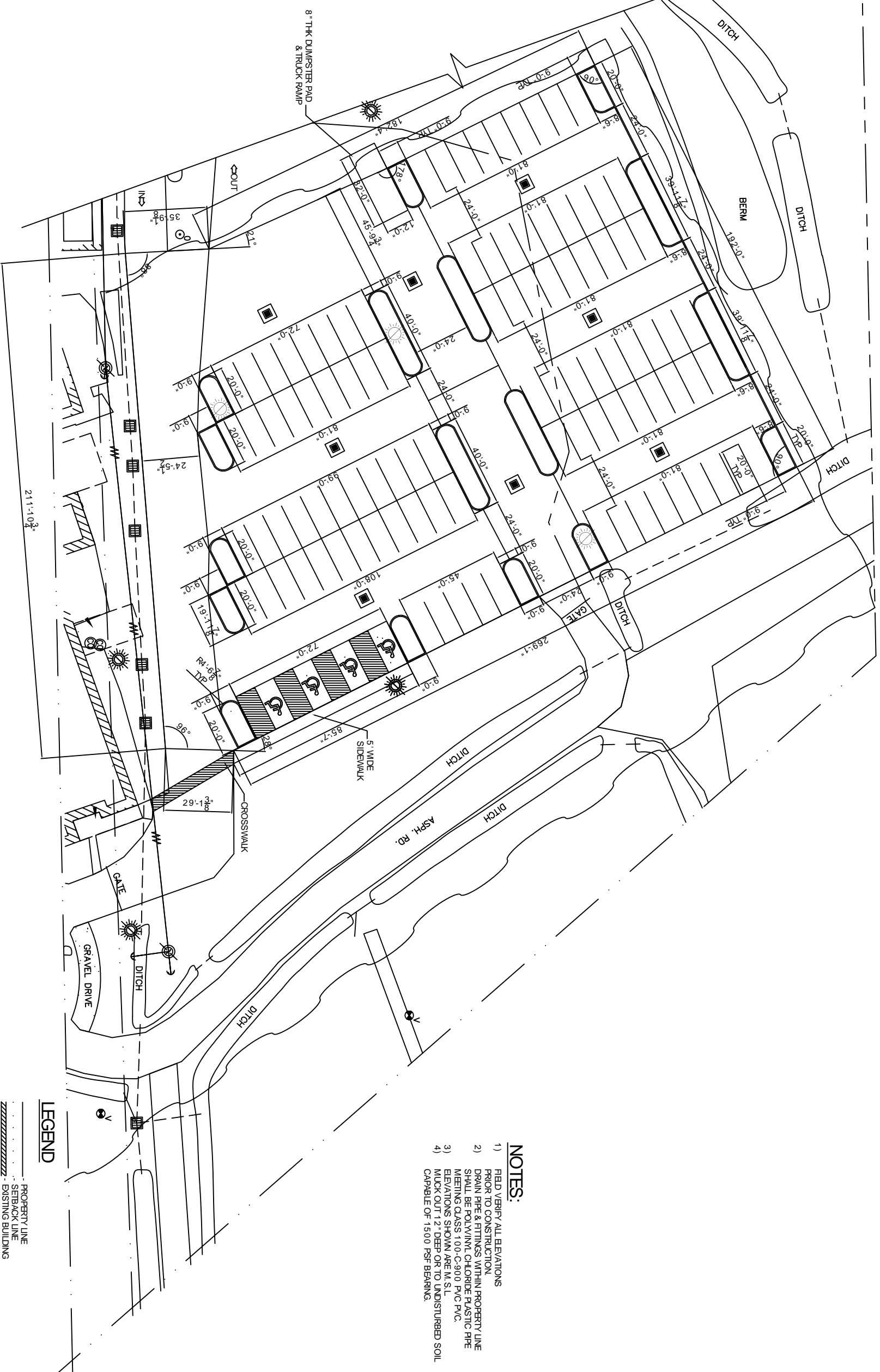
DATE: 10-24-08

SHEET

C-5

OF

- NOTES:**
- 1) FIELD VERIFY ALL ELEVATIONS PRIOR TO CONSTRUCTION.
 - 2) DRAIN PIPE & FITTINGS WITHIN PROPERTY LINE SHALL BE POLYVINYL CHLORIDE PLASTIC PIPE MEETING CLASS 100-C-900 PVC PVC. ELEVATIONS SHOWN ARE M.S.L.
 - 3) MUCK OUT 12" DEEP OR TO UNDISTURBED SOIL CAPABLE OF 1500 PSF BEARING.
 - 4)



PARTIAL PAVING DIMENSIONAL PLAN
SCALE 1"=20'-0"

LEGEND

- PROPERTY LINE
- SETBACK LINE
- EXISTING BUILDING
- NEW CURBS
- CONTROL JOINT
- SLOPE LINE
- 12" OR 15" DRAIN LINE
- EXISTING DRAIN LINE
- EDGE OF NEW CONCRETE
- HANDICAPPED PARKING
- EXISTING CATCH BASIN
- CATCH BASIN W/ TEMP INLET PROTECTION
- EXISTING ELEVATIONS
- TEMPORARY SILT FENCING