

DAMMON
ENGINEERING, INC.

CHIEF ENGINEER
EMMETT
DAMMON, P.E.

CHIEF ARCHITECT
ROBERT
WILTSE

1095 FLORIDA AVENUE
SLIDELL, LA. 70458
OFFICE: 985-649-5832
FAX: 985-641-5950

WEBSITE:
WWW.DAMMONENGINEERING.COM

EMAIL:
DAMMONENG@BELLSOUTH.NET

ARCHITECTURE
ENGINEERING
STUDIES
PLANNING
INVESTIGATION
EXPERT WITNESS

GREEN-STATEFARM
RETAIL COMPLEX
GAUSE
BLVD., WEST
SLIDELL, LA

FLOOR
PLAN

REV:

SCALE: AS NOTED

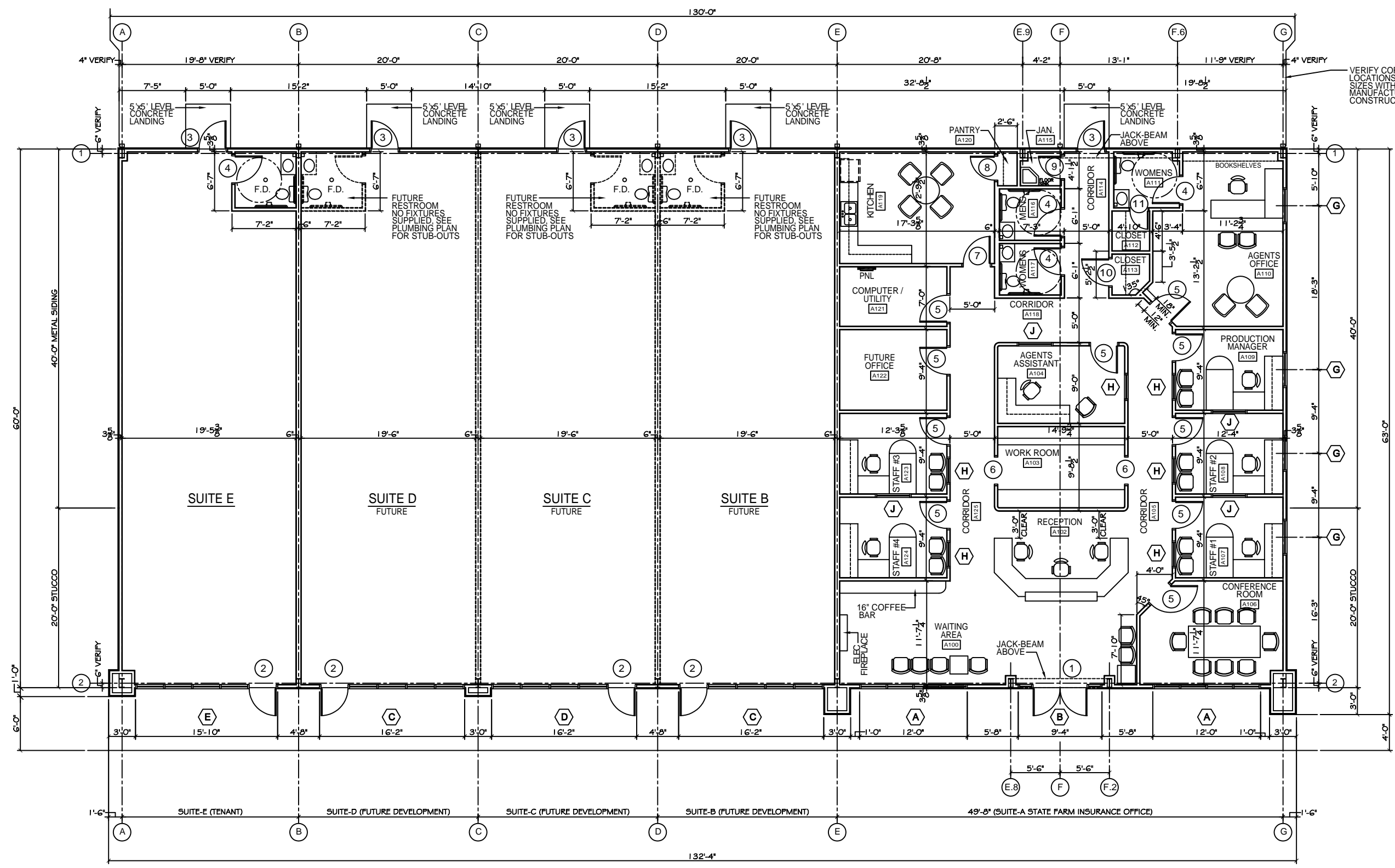
JOB#: 2057

DATE: 04-09-10

SHEET

A-1

OF



VERIFY CORNER COLUMN
LOCATIONS AND ALL STEEL
SIZES WITH METAL BUILDING
MANUFACTURER PRIOR TO
CONSTRUCTION.

FLOOR PLAN
SCALE: 3/16"=1'

PRELIMINARY (NOT FOR CONSTRUCTION)