

DAMMON
ENGINEERING, INC.

CHIEF ENGINEER
EMMETT
DAMMON, P.E.

CHIEF ARCHITECT
ROBERT
WILTSE

1095 FLORIDA AVENUE
SLIDELL, LA. 70458
OFFICE: 985-649-5832
FAX: 985-641-5950

WEBSITE:
WWW.DAMMONENGINEERING.COM

EMAIL:
DAMMONENG@BELLSOUTH.NET

- ARCHITECTURE
- ENGINEERING
- STUDIES
- PLANNING
- INVESTIGATION
- EXPERT WITNESS

GREEN-STATEFARM
RETAIL COMPLEX
GAUSE
BLVD., WEST
SLIDELL, LA

EXTERIOR
ELEVATIONS

REV:

SCALE: AS NOTED

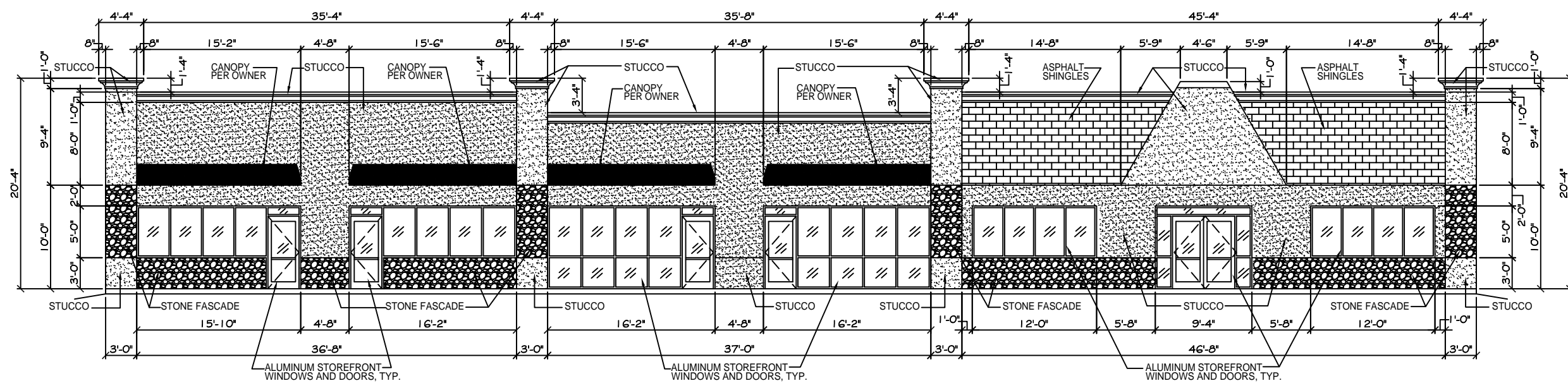
JOB#: 2057

DATE: 04-09-10

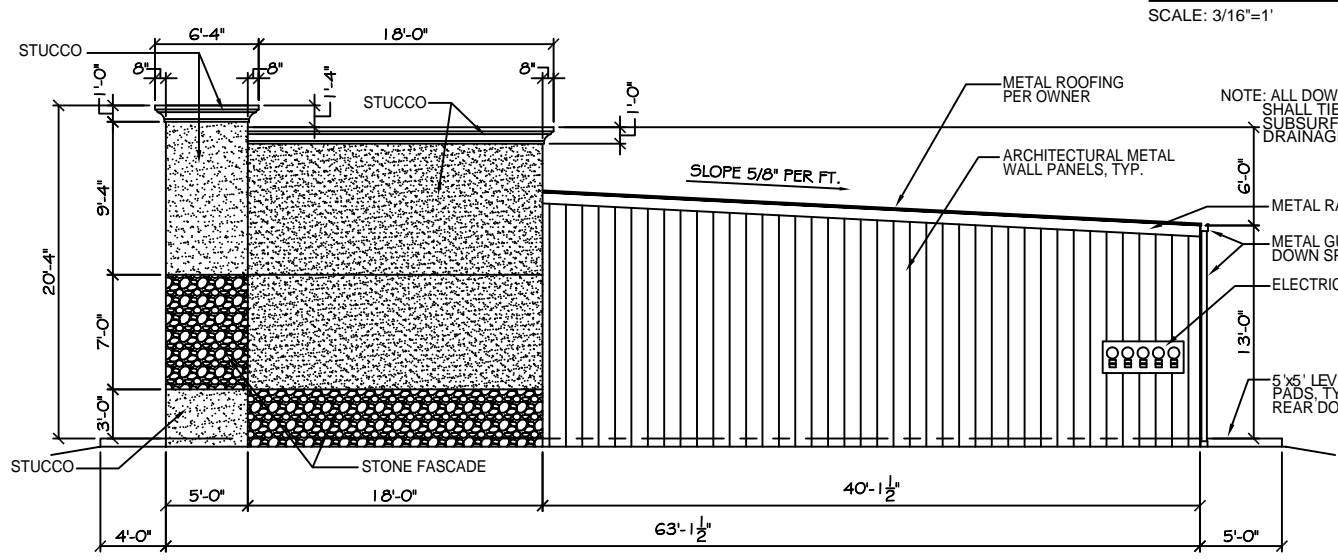
SHEET

A-3

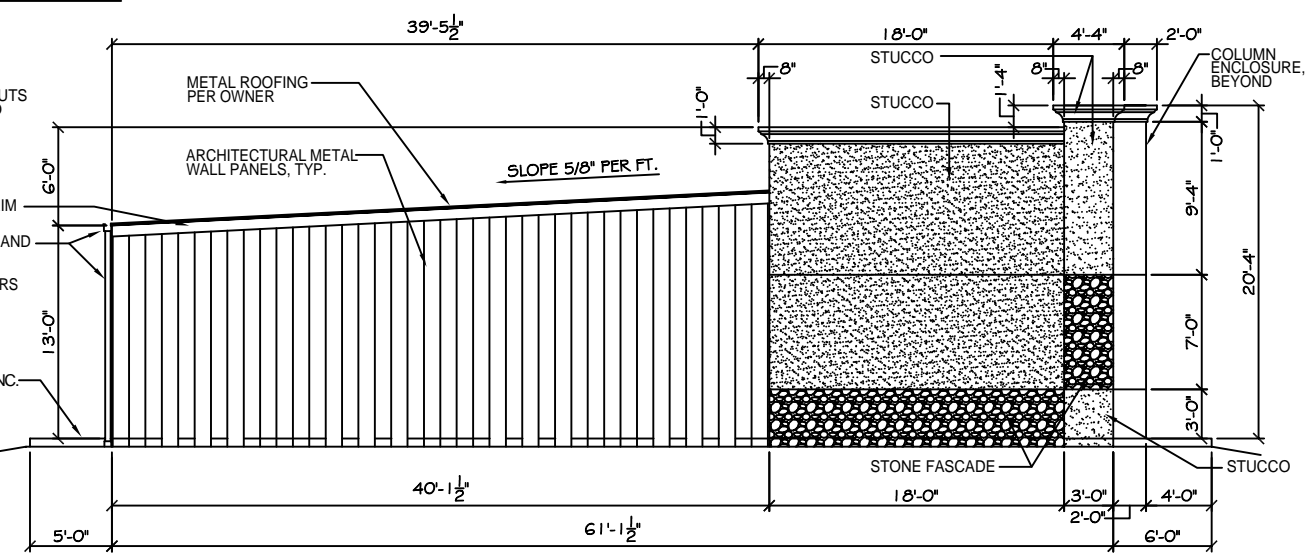
OF



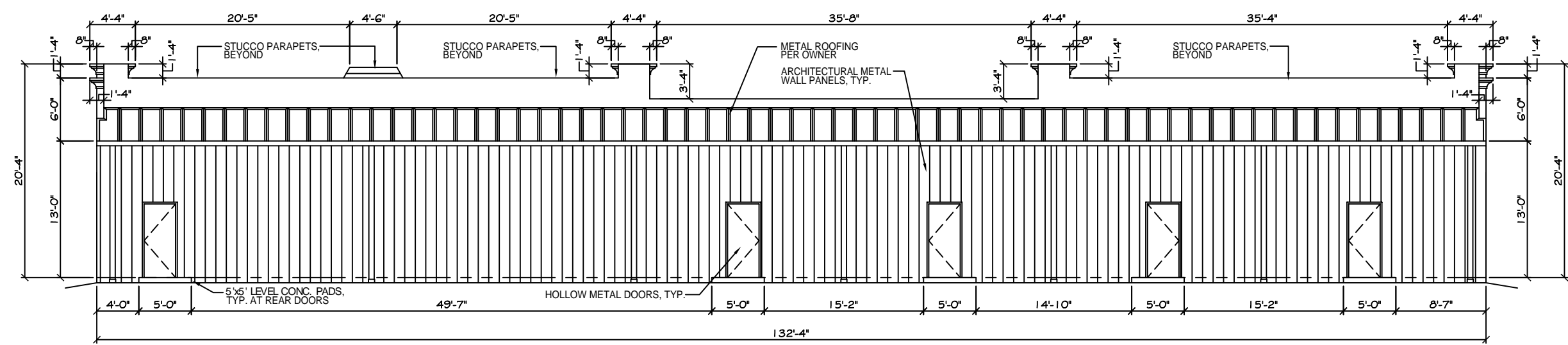
NORTHEAST (FRONT) ELEVATION
SCALE: 3/16"=1'



NORTHWEST (SIDE) ELEVATION
SCALE: 3/16"=1'



SOUTHEAST (SIDE) ELEVATION
SCALE: 3/16"=1'



SOUTHWEST (REAR) ELEVATION
SCALE: 3/16"=1'

PRELIMINARY (NOT FOR CONSTRUCTION)