

**GENERAL NOTES**

THE LOCATIONS OF UNDERGROUND UTILITIES AS SHOWN HEREON ARE BASED ON ABOVEGROUND STRUCTURES AND RECORD DRAWINGS PROVIDED THE SURVEYOR. LOCATIONS OF UNDERGROUND UTILITIES OR STRUCTURES MAY VARY FROM LOCATIONS SHOWN HEREON. ADDITIONAL BURIED UTILITIES OR STRUCTURES MAY BE ENCOUNTERED. NO EXCAVATIONS WERE MADE DURING THE PROGRESS OF THIS SURVEY TO LOCATE BURIED UTILITIES OR STRUCTURES.

I HAVE CONSULTED THE FLOOD INSURANCE RATE MAPS AND FOUND THIS PROPERTY IS IN A SPECIAL FLOOD HAZARD AREA. F.I.R.M. COMMUNITY MAP NO. 220204-0010-C, DATED: 4/21/1999. FLOOD ZONE: AE; BASE FLOOD ELEVATION: 12.2'

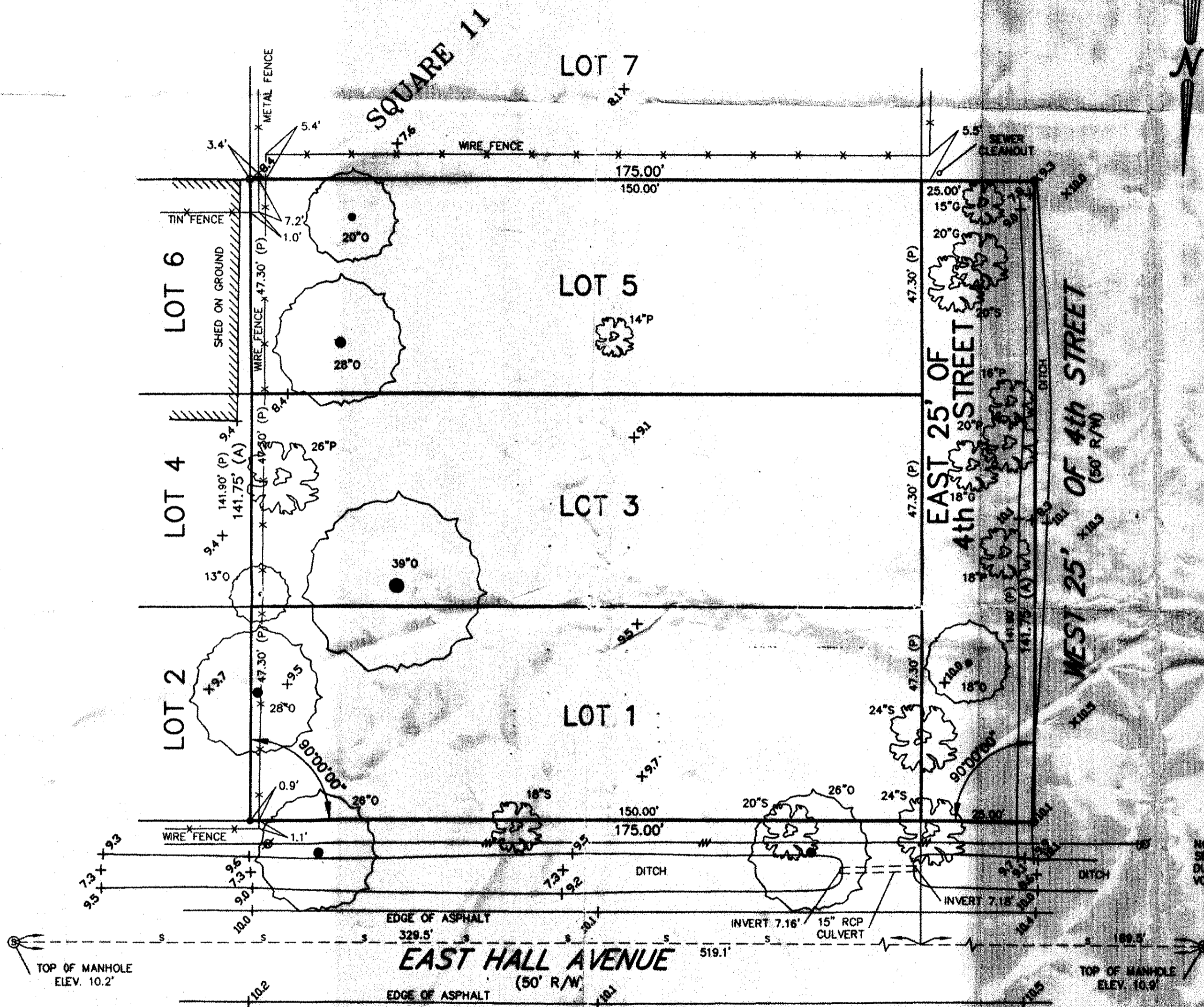
N.G.V.D. = NATIONAL GEODETIC VERTICAL DATUM (1929); B.M. = BENCHMARK

T.B.M. = NAIL IN POWER POLE ON NORTH R/W LINE OF EAST HALL AVENUE  
 @ PROPERTY LINE OF LOT 1 AND EAST 25' OF 4th STREET  
 TAG NO. M830  
 EL. 13.0'

**REFERENCES:**  
 1.) SURVEY BY: J.V. BURKES & ASSOCIATES, INC.  
 SURVEY NO. 1050087; DATED: 1/7/2005  
 2.) SURVEY BY: JOE ROACH  
 DATED: 7/1/1985

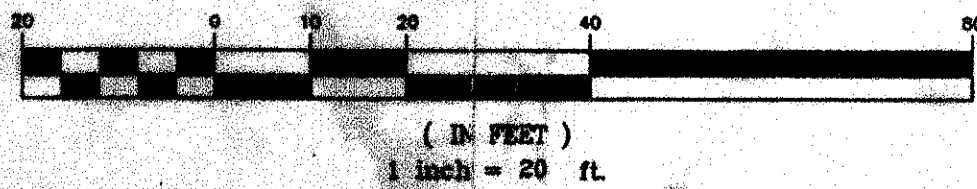
- LEGEND**
- = 1/2" Iron Rod (FND)
  - = 1/2" Iron Rod (SET)
- TREE LEGEND**
- G = GUM
  - O = OAK
  - P = PINE
  - S = SYCAMORE

- LEGEND**
- S — SEWER MANHOLE, SEWER LINE
  - W — WATER MANHOLE, WATER LINE
  - G — GAS MANHOLE, GAS LINE
  - T — TELE. MANHOLE, TELE. LINE
  - D — DRAIN MANHOLE, DRAIN LINE
  - I — DRAIN INLET, DRAIN LINE
  - E T V — POWER POLE / OVERHEAD LINES
  - E T V — ELECTRIC, TELEPHONE, CABLE TV
  - E T V — ELEC. TOWER / OVERHEAD LINES
  - GATCH BASIN
  - LIGHT STANDARD
  - TRAFFIC LIGHT
  - TELE., ELEC., CATV PEDESTAL
  - GAS, WATER, ELECTRIC METER
  - GAS, WATER VALVE
  - SEWER, DRAIN CLEANOUT
  - FIRE HYDRANT
  - GUY WIRE ANCHOR
  - SIGN
  - PYLON
  - MAILBOX
  - TREE
  - SHRUB
  - FENCE



NOTE: COULD NOT OBTAIN SEWER MANHOLE DEPTHS DUE TO HIGH TRAFFIC VOLUME ON EAST HALL AVENUE.

**GRAPHIC SCALE**



**CERTIFICATION**

I CERTIFY THAT THIS PLAN DOES REPRESENT AN ACTUAL GROUND SURVEY AND MAY TO THE BEST OF MY KNOWLEDGE BE ENCUMBERED, EAST EITHER WAY BY ANY OF THE PROPERTY LINES, EXCEPT AS SHOWN. ENCUMBRANCES SHOWN HEREON ARE NOT NECESSARILY EXCLUSIVE. ENCUMBRANCES OF RECORD OR SHOWN ON THE OFFICIAL RECORD POLICY WILL BE ADDED HEREON UPON REQUEST. AS SURVEYOR HAS NOT PERFORMED ANY TITLE SEARCH OR RECORD SEARCH.

PROPERTY IS SURVEYED IN ACCORDANCE WITH THE LOUISIANA "MINIMUM STANDARD" FOR PROFESSIONAL SURVEYS FOR A CLASS "C" SURVEY. SURVEYING AND ENGINEERING SERVICES UNLESS NOTED OTHERWISE.

**TOPOGRAPHICAL SURVEY OF LOTS 1, 3, 5 & EAST 25' OF 4th STREET SQUARE 11, BRUGIER ADDITION TO THE CITY OF SLIDELL ST. TAMMANY PARISH, LOUISIANA**

DECLARATION IS MADE TO CORRAL PURSUANT TO THE SURVEY. IT IS NOT TRANSFERABLE TO ANY OTHER PERSON OR ENTITY WITHOUT THE ORIGINAL SEAL OF SURVEYOR.

**JULIAN RODRIGUE, JR. AITTY.**

SCALE: 1" = 20'  
 DATE: 2/2/2005  
 DRAWN BY: ME CHECKED BY: MD  
 DWG. NO. 1050410  
 SHEET 1 OF 1

**J.V. Burkes & Associates, Inc.**  
 SURVEYING ENGINEERING • ENVIRONMENTAL

2990 East Cause Blvd., Suite B  
 Slidell, Louisiana 70461  
 E-mail: jvbosco@jvburkes.com

Phone: 985-649-0075 Fax: 985-649-0154  
 Mississippi Phone: 228-435-5800

