

DAMMON ENGINEERING, INC.

CHIEF ENGINEER
EMMETT DAMMON, P.E.

CHIEF ARCHITECT
ROBERT WILTSE

1095 FLORIDA AVENUE
SUIDELL, LA. 70458
OFFICE: 985-649-5832
FAX: 985-641-5950

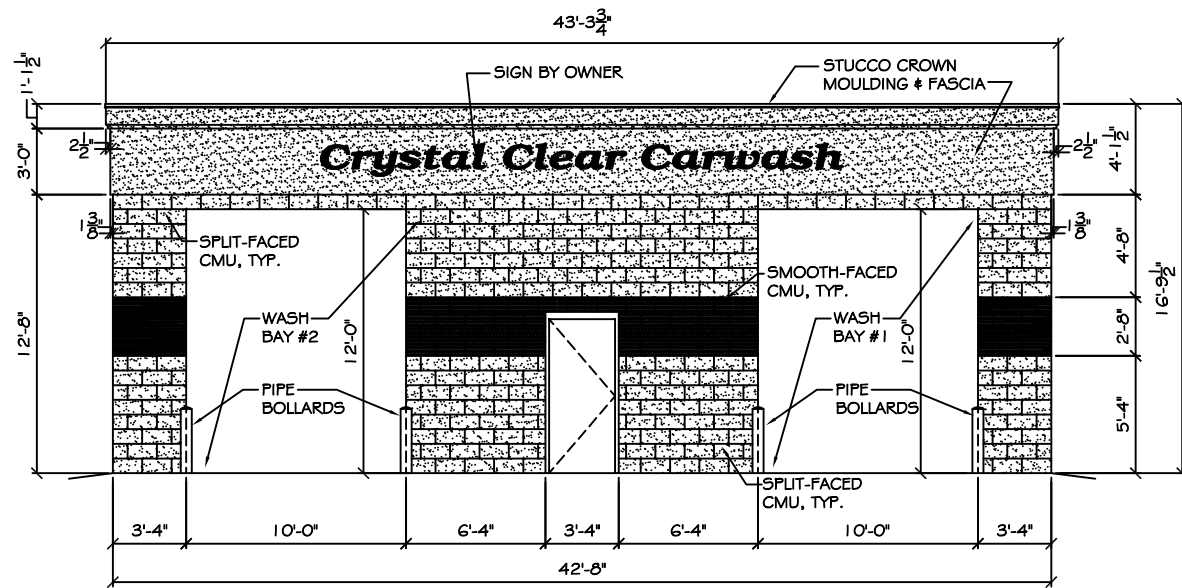
WEBSITE:
WWW.DAMMONENGINEERING.COM

EMAIL:
DAMMONENG@BELLSOUTH.NET

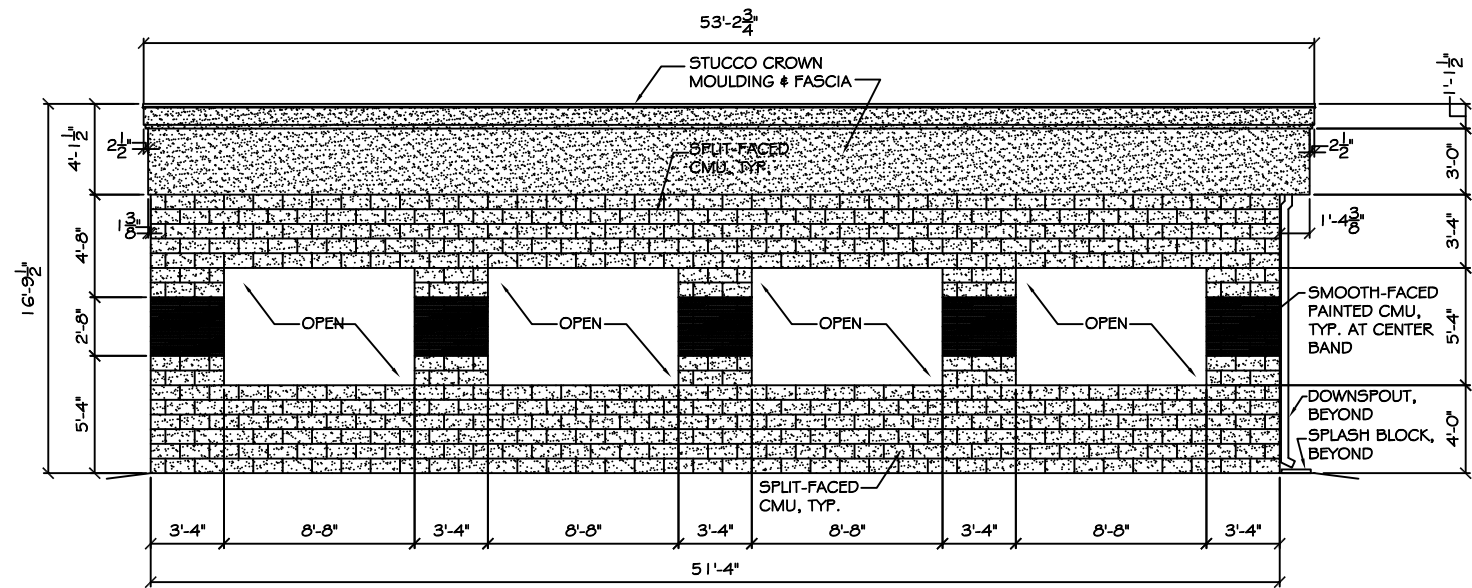
ARCHITECTURE
ENGINEERING
STUDIES
PLANNING
INVESTIGATION
EXPERT WITNESS

CECIL BOYD
CAR WASH
4TH ST & EAST HALL
LOT 1, 3, & 5

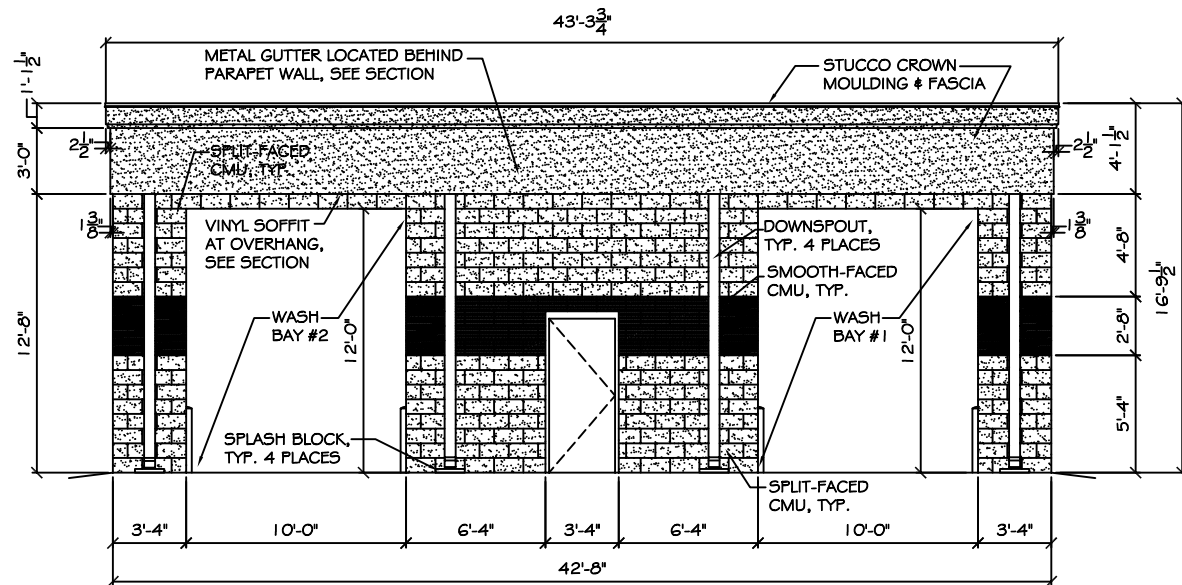
CAR WASH
ELEVATIONS



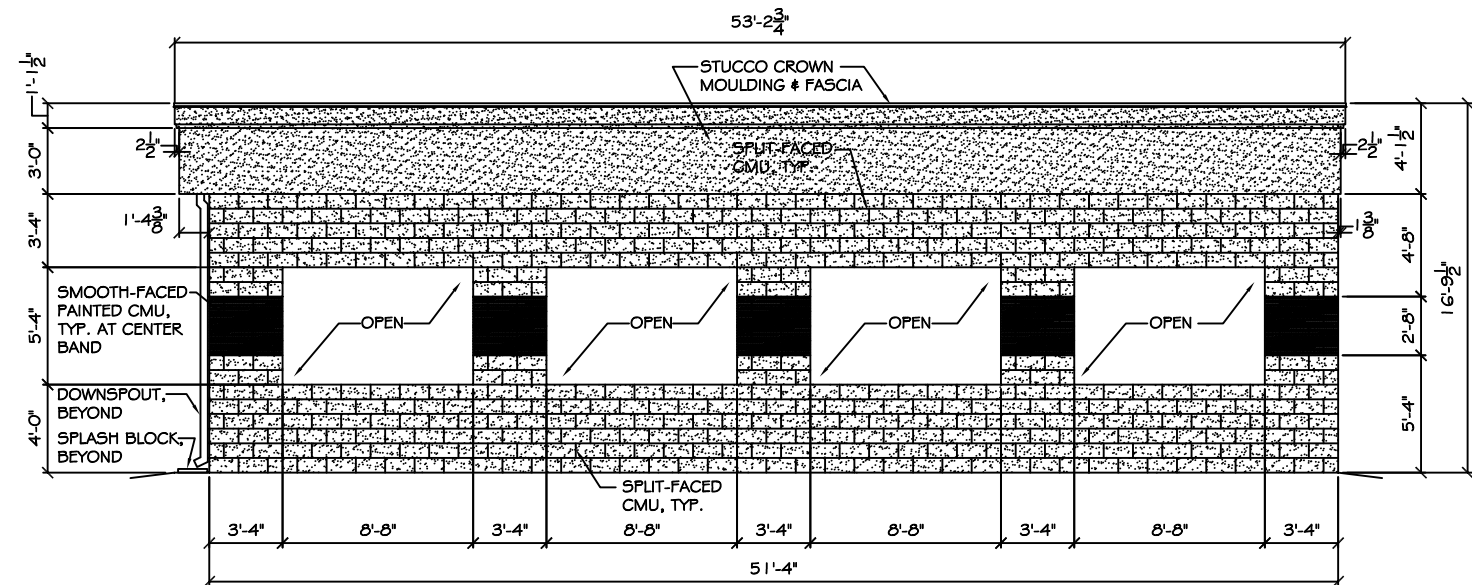
NORTH-FRONT ELEVATION
SCALE: 1/4"=1'



WEST-SIDE ELEVATION
SCALE: 1/4"=1'



SOUTH-REAR ELEVATION
SCALE: 1/4"=1'



EAST-SIDE ELEVATION
SCALE: 1/4"=1'

EXTERIOR STUCCO SPECIFICATIONS:

1. COMPLY WITH ASTM C-841 AND C-842. PROVIDE 3/8" OVERALL THICKNESS ON SELF-FURRING DIAMOND MESH GALVANIZED METAL LATH, 3.4 LB. PER SQUARE YARD, ON 'TYVEK' STUCCO WRAP. ATTACH LATH AT 'DIMPLES' ONLY, WITH NON-CORROSIVE SCREWS.
2. METAL LATH AND ALL ACCESSORIES TO BE EQUAL TO 'AMICO', TO INCLUDE CORNER BEADS, CASING BEADS, BASE SCREEDS, AND CONTROL JOINTS, ALL INSTALLED WITH NON-CORROSIVE SCREWS. ALL ACCESSORIES TO BE ZINC. ALL CORNERS TO BE MITERED.
3. STUCCO TO BE INSTALLED IN THREE COATS; SCRATCH, BROWN, AND FINISH. FINISH COAT TO BE ORIENTAL STUCCO WITH SAND FLOAT FINISH BY U. S. GYPSUM.
4. COMPLY WITH MANUFACTURER'S AND INDUSTRY RECOMMENDATIONS. INSTALL LATH IN ACCORDANCE WITH ASTM C-1063.
5. SUBMIT DATACUT SHEETS FOR ALL ITEMS IF REQUIRED.

REV:

SCALE: AS NOTED

JOB#: 2074

DATE: 08-06-10

SHEET

A-3

OF