

DAMMON
ENGINEERING, INC.

CHIEF ENGINEER
EMMETT
DAMMON, P.E.
CHIEF ARCHITECT
ROBERT
WILTSE

554 OLD SPANISH TRAIL
SUITE L, LA. 70458
OFFICE: 985-649-5832
FAX: 985-641-5950

WEBSITE:
WWW.DAMMONENGINEERING.COM
EMAIL:
DAMMONIENR@BELLFLOWTH.NET

ARCHITECTURE
ENGINEERING
STUDIES
PLANNING
INVESTIGATION
EXPERT WITNESS

NEW
RESIDENTIAL
COMMUNITY
HOME

STARC WEST
1705 VIOLA ST
MANDEVILLE, LA

FLOOR
PLAN

REV: 6-21-11

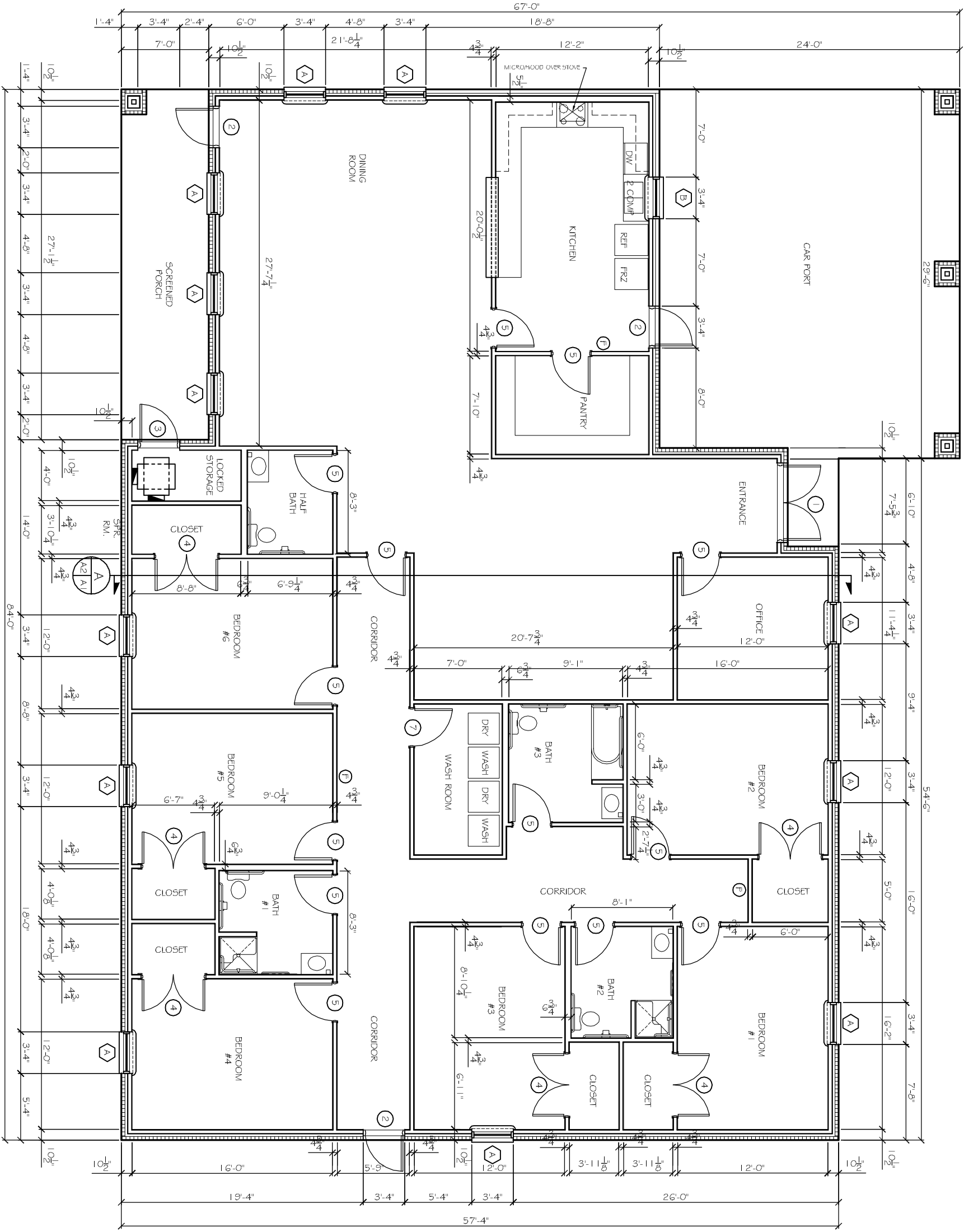
SCALE: AS NOTED

JOB#: 2081

DATE: 04-08-2011

SHEET 5

A-1



FLOOR PLAN
SCALE: 1/4"=1'-0"



FOR GENERAL NOTES,
SEE SHEET A-6