

DAMMON ENGINEERING, INC.

CHIEF ENGINEER
EMMETT DAMMON, P.E.

CHIEF ARCHITECT
ROBERT WILTSE

1095 FLORIDA AVENUE
SLIDELL, LA. 70458
OFFICE: 985-649-5832
FAX: 985-641-5950

WEBSITE:
WWW.DAMMONENGINEERING.COM

EMAIL:
DAMMONENG@BELLSOUTH.NET

ARCHITECTURE
ENGINEERING
STUDIES
PLANNING
INVESTIGATION
EXPERT WITNESS

**NORTHPARK
CARWASH**

3017
PONTCHARTRAIN
DRIVE
SLIDELL, LA
70458

**SITE PLAN
SCHEME THREE**

REV:

SCALE: AS NOTED

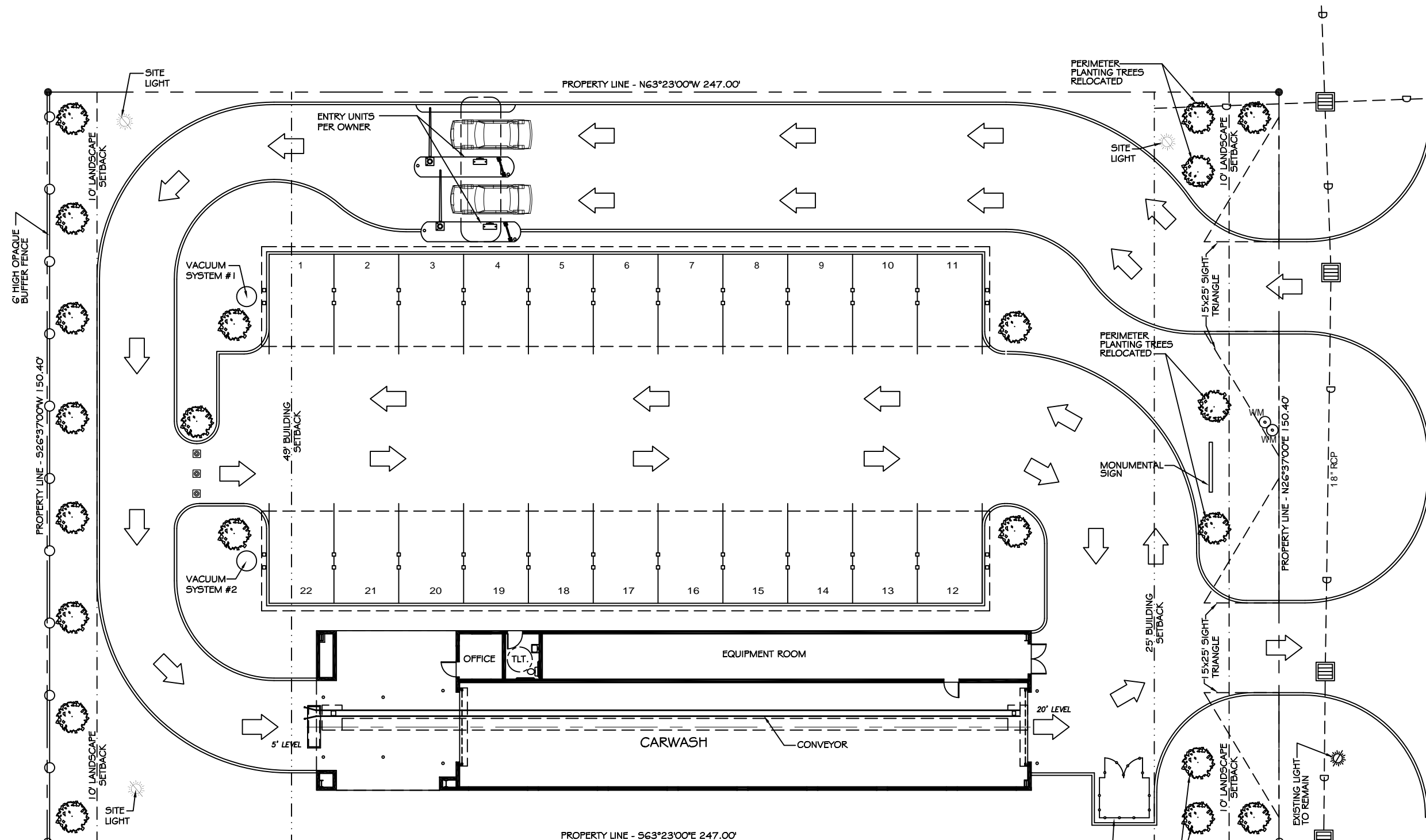
JOB#: 2085

DATE: 11-16-10

SHEET

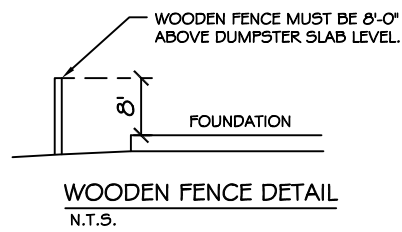
C-2

OF



SITE LEGEND

- PROPERTY LINE
- - - UTILITY / EASEMENT LINE
- - - BUILDING SETBACK MINIMUM
- - - TRIANGULAR SITE LINE
- - - LANDSCAPING SETBACK MINIMUM AND BUFFER ZONE LIMITS AT REAR
- OPAQUE BUFFER FENCE
- ▭ BUILDING OUTLINE
- TRASH RECEPTACLE
- ☀ NEW SITE LIGHTING



SITE PLAN

SCALE: 1"=10'



SITE PLAN NOTES

1. ROOFING MATERIAL: METAL ROOFING PANEL
2. SIDING MATERIAL: CONVENTIONAL STUCCO VENEER & CMU.
3. UTILITIES: ALL UTILITIES SHALL BE PLACED UNDERGROUND

NOTE:
PAVEMENT IN ALL PARKING
AREAS SHALL BE 5" THICK
CONCRETE.

SITE LIGHTING

EXTERIOR LIGHTING SHALL BE SHADED OR INWARDLY DIRECTED IN SUCH A MANNER SO THAT NO DIRECT LIGHTING OR GLARE BE CAST BEYOND THE PROPERTY LINE. THE INTENSITY OF SUCH LIGHTING SHALL NOT EXCEED ONE FOOT CANDLE AS MEASURED AT THE ABUTTING PROPERTY LINE.

PRELIMINARY (NOT FOR CONSTRUCTION)