

DAMMON ENGINEERING, INC.

CHIEF ENGINEER
EMMETT DAMMON, P.E.

CHIEF ARCHITECT
ROBERT WILTSE

554 OLD SPANISH TRAIL
SLIDELL, LA. 70458
OFFICE: 985-649-5832
FAX: 985-641-5950

WEBSITE:
WWW.DAMMONENGINEERING.COM

EMAIL:
DAMMONENG@BELLSOUTH.NET

ARCHITECTURE
ENGINEERING
STUDIES
PLANNING
INVESTIGATION
EXPERT WITNESS

RAIN FOREST CARWASH

3017
PONTCHARTRAIN
DRIVE
SLIDELL, LA
70458

SITE UTILITIES & ILLUMINATION PLAN

REV:

SCALE: AS NOTED

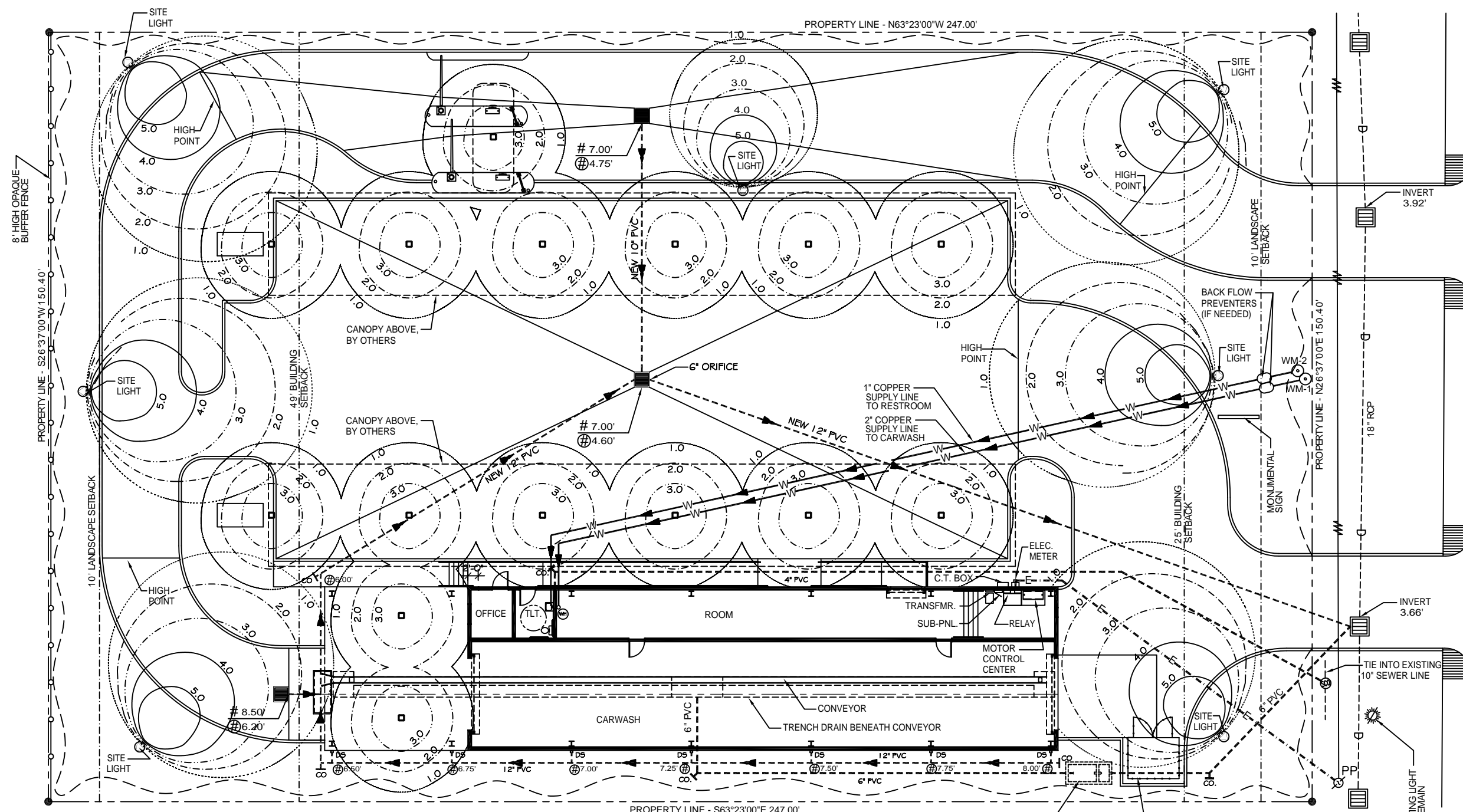
JOB#: 2085

DATE: 03-23-11

SHEET 8

C-7

OF 25



SITE UTILITIES & ILLUMINATION PLAN

SCALE: 1"=10'



SITE LIGHTING

EXTERIOR LIGHTING SHALL BE SHADED OR INWARDLY DIRECTED IN SUCH A MANNER SO THAT NO DIRECT LIGHTING OR GLARE BE CAST BEYOND THE PROPERTY LINE. THE INTENSITY OF SUCH LIGHTING SHALL NOT EXCEED ONE FOOT CANDLE AS MEASURED AT THE ABUTTING PROPERTY LINE.

LEGEND

- | | | | |
|-------|--|---------------|-----------------------|
| — | - PROPERTY LINE | — W — | - NEW WATER LINE |
| - - - | - BUILDING SETBACK | - - - S - - - | - NEW SEWER LINE |
| - - - | - LANDSCAPING SETBACK
MINIMUM AND BUFFER
ZONE LIMITS AT REAR | - - - E - - - | - NEW POWER LINE |
| — | - NEW BUILDING OUTLINE | - - - | - SILT FENCING DETAIL |
| | | - - - | - NEW DRAIN LINE |