

DAMMON ENGINEERING, INC.

CHIEF ENGINEER
EMMETT
DAMMON, P.E.

CHIEF ARCHITECT
ROBERT
WILTSE

554 OLD SPANISH TRAIL
SLIDELL, LA. 70458
OFFICE: 985-649-5832
FAX: 985-641-5950

WEBSITE:
WWW.DAMMONENGINEERING.COM

EMAIL:
DAMMONENG@BELLSOUTH.NET

ARCHITECTURE

ENGINEERING

STUDIES

PLANNING

INVESTIGATION

EXPERT WITNESS

**RAIN FOREST
CARWASH**

**3017
PONTCHARTRAIN
DRIVE
SLIDELL, LA
70458**

**FOUNDATION
DETAILS**

REV:

SCALE: AS NOTED

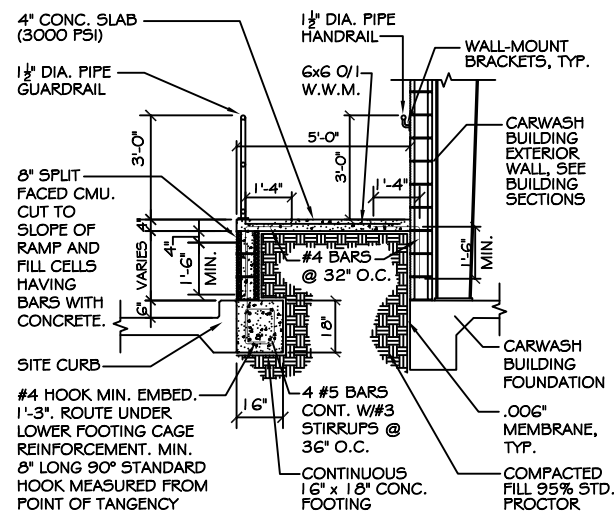
JOB#: 2085

DATE: 03-23-11

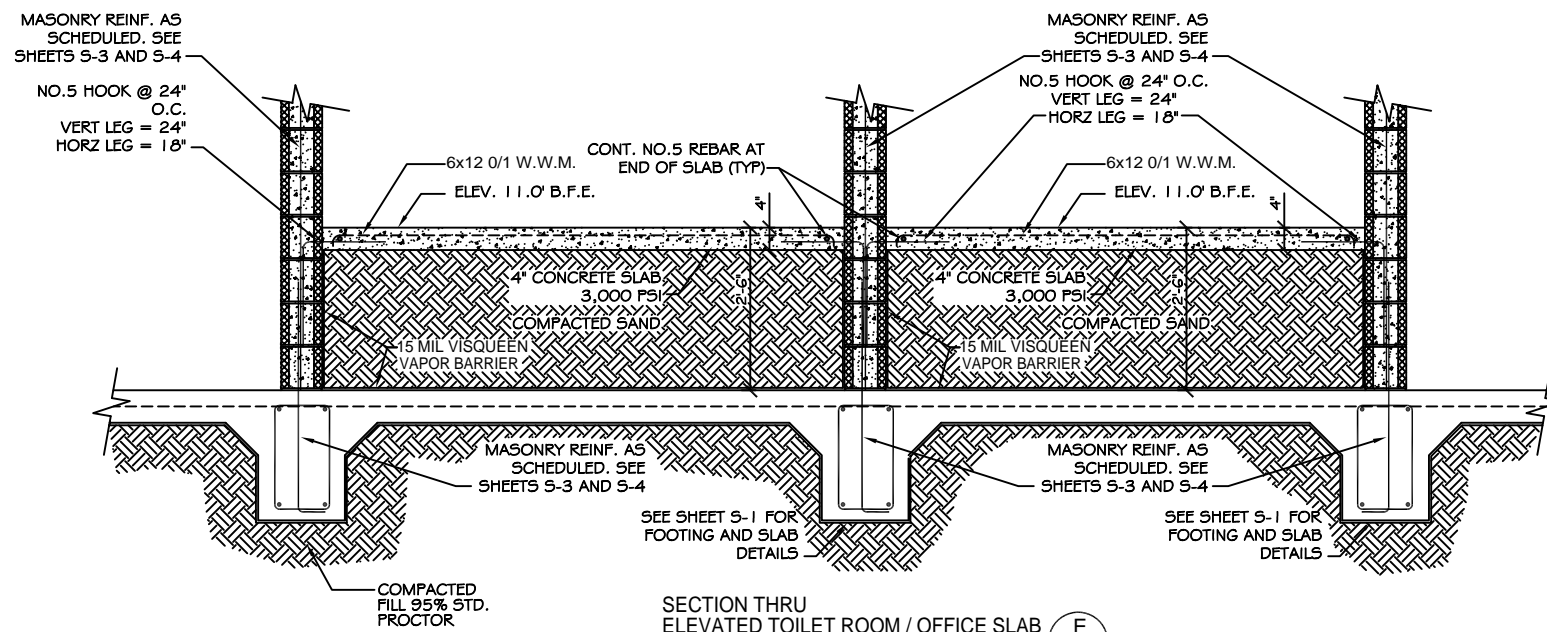
SHEET 13

S-2

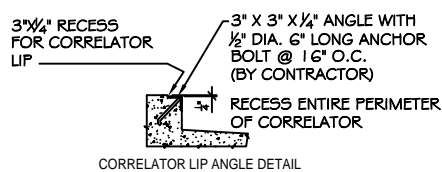
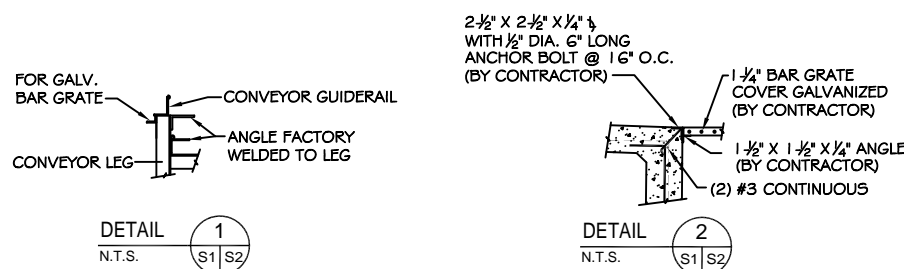
OF 25



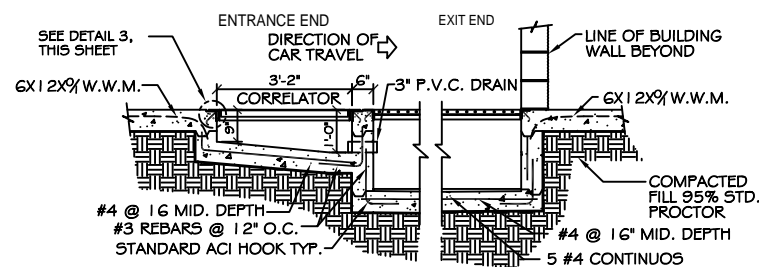
ACCESS RAMP CROSS-SECTION H
N.T.S. S1 S2



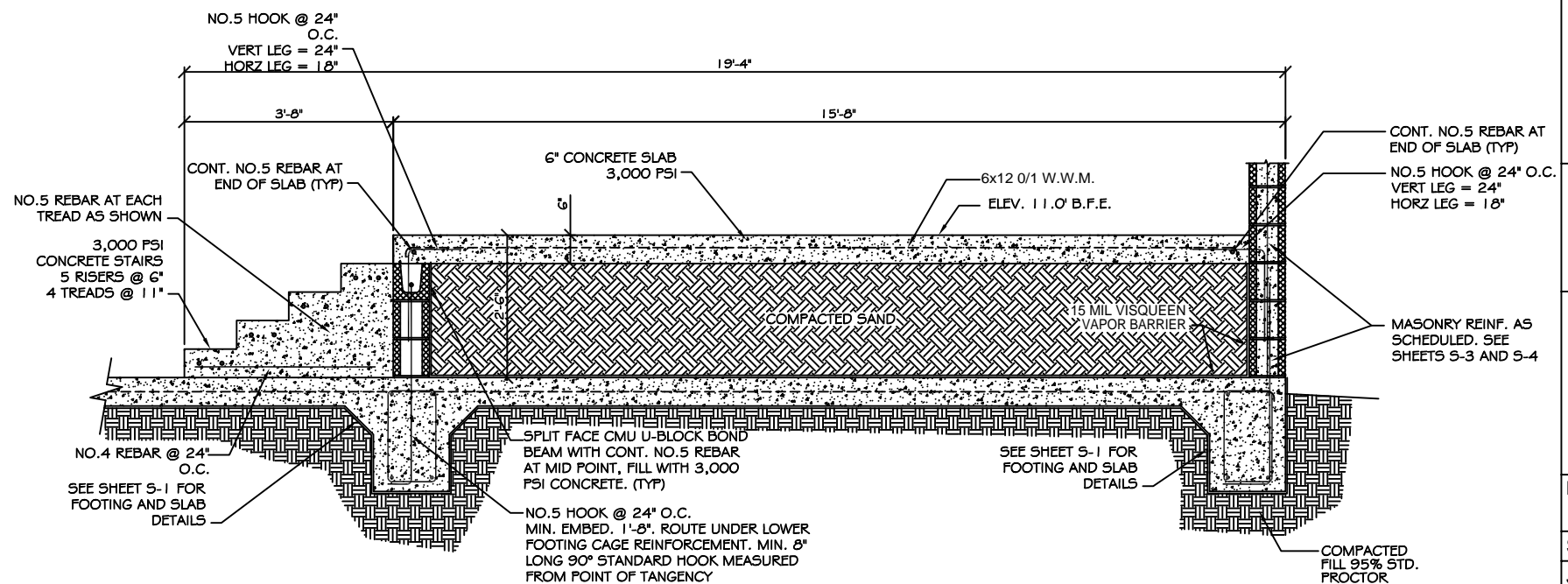
SECTION THRU
ELEVATED TOILET ROOM / OFFICE SLAB E
N.T.S. S1 S2



DETAIL 3
N.T.S. S1 S2



SECTION THRU TRENCH
AND CORRELATOR PIT G
N.T.S. S1 S2



SECTION THRU
ELEVATED MECHANICAL ROOM SLAB F
N.T.S. S1 S2