

**DAMMON ENGINEERING, INC.**

CHIEF ENGINEER  
EMMETT  
DAMMON, P.E.

CHIEF ARCHITECT  
ROBERT  
WILTSE

554 OLD SPANISH TRAIL  
SLIDELL, LA. 70458  
OFFICE: 985-649-5832  
FAX: 985-641-5950

WEBSITE:  
WWW.DAMMONENGINEERING.COM  
EMAIL:  
DAMMONENG@BELL.SOUTH.NET

ARCHITECTURE  
ENGINEERING  
STUDIES  
PLANNING  
INVESTIGATION  
EXPERT WITNESS

**RAIN FOREST  
CARWASH**

3017  
PONTCHARTRAIN  
DRIVE  
SLIDELL, LA  
70458

**MASONRY  
PLAN**

REV:

SCALE: AS NOTED

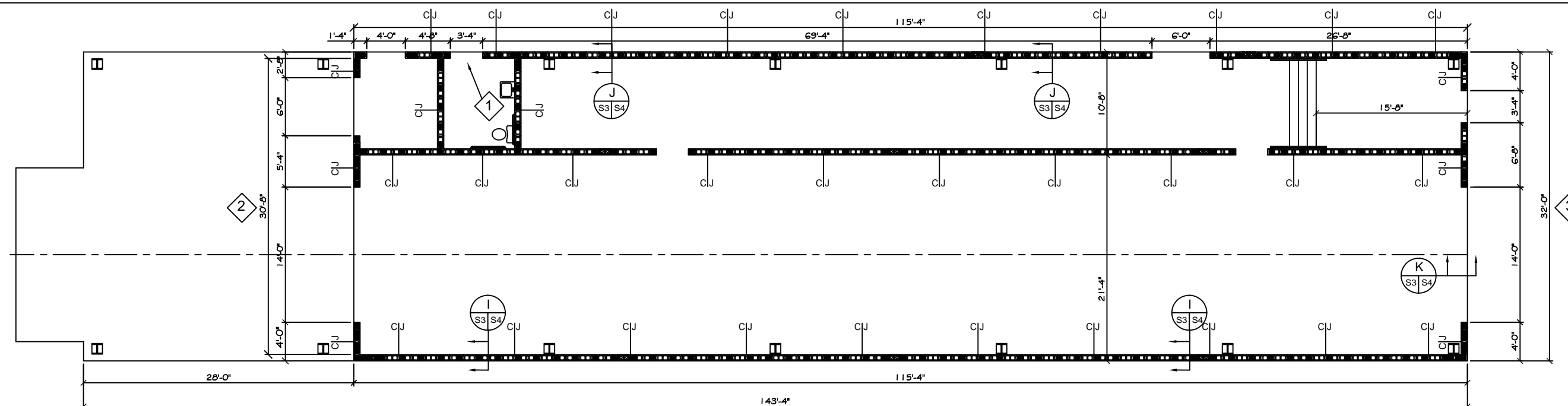
JOB#: 2085

DATE: 03-23-11

SHEET 14

**S-3**

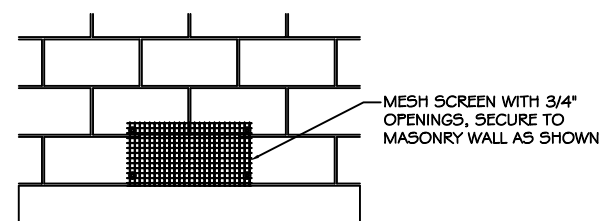
OF 25



**MASONRY NOTES**



1. OPENING FOR ELEVATED TOILET ROOM DOOR. BOTTOM OF OPENING @ ELEVATION 11.0' BFE.
2. TOP OF MASONRY 14'-8" FOR THIS WALL ONLY. METAL STUD WALL SYSTEM ABOVE TO ROOF. SEE SHEET A-4 FOR DETAILS. LINTEL SIMILAR TO 24" CONCRETE LINTEL SHOWN ON EAST ENDWALL DETAIL.
3. TOP OF MASONRY 13'-4" FOR THIS WALL ONLY. METAL STUD WALL SYSTEM ABOVE TO ROOF. SEE SHEET A-4 FOR DETAILS.



**FLOOD PROTECTION**

SCALE: N.T.S.

**MASONRY PLAN**

SCALE: 3/16"=1'-0"



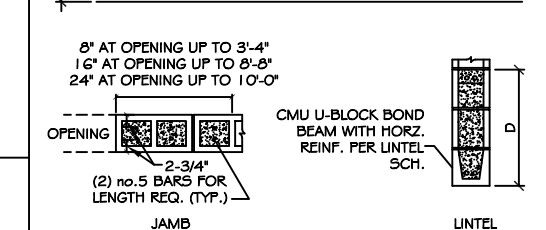
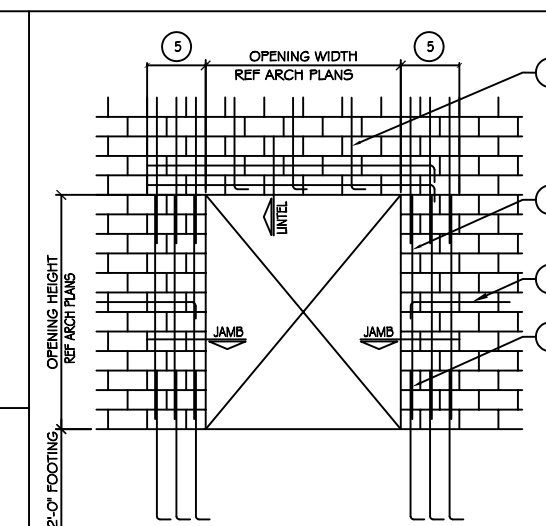
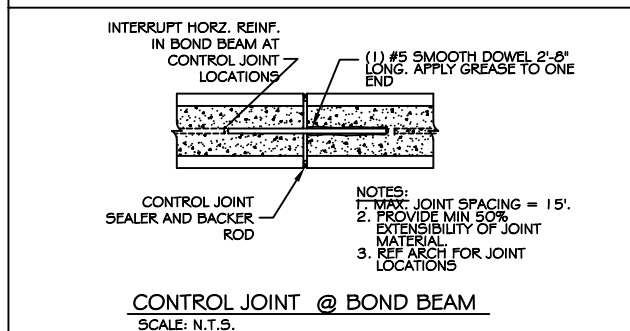
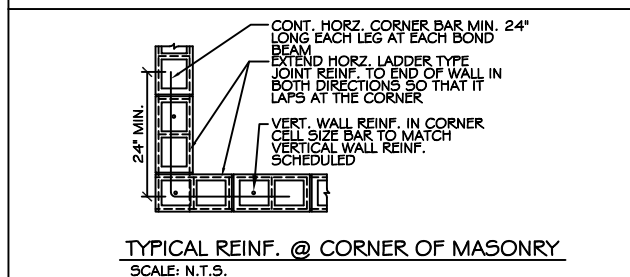
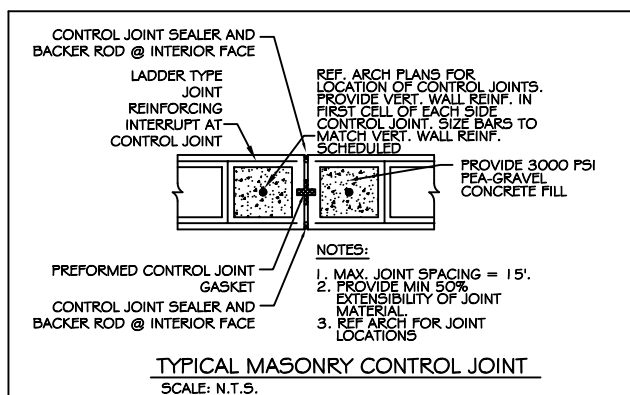
**LEGEND**

- INDICATES CONTINUOUS NO. 5 VERTICAL REINF. W/ 3000 PSI CONCRETE FILL.
- INDICATES MASONRY CONTROL JOINT. SEE DETAIL THIS SHEET
- INDICATES FLOOD PROTECTION OPENING, SEE DETAIL THIS SHEET

**CMU LINTEL SCHEDULE**

WIDTH (W)	CLEAR SPAN	DEPTH (D)	HORIZ. REINF.
8" TYP AT ALL CMU WALLS	UP TO 3'-4"	8"	(1) #6 BOTTOM
	UP TO 6'-4"	16"	(1) #6 T#B
	UP TO 14'-0"	24"	(2) #6 T#B

PROVIDE 3000 PSI PEA-GRAVEL CONCRETE FILL FOR ALL LINTELS.



- NOTES:**
1. WHERE HORIZ. REINFORCEMENT IS INTERRUPTED BY OPENING OR CONTROL JOINT PROVIDE STANDARD ACI HOOK WITH VERT. WALL REINF. AT END CELL.
  2. SPLICES IN VERT. REINF. REF. WALL SECTIONS S-3.
  3. ALL VERT. BARS AT DOOR JAMBS TO BE FULL HEIGHT.
  4. CONTINUE VERT. WALL REINF. OVER OPENING. ANCHOR VERT. REINF. INTO LINTEL BEAM WITH STANDARD ACI HOOK.
  5. EXTEND LINTEL A MIN. 2'-0" BEYOND FACE OF OPENING EACH SIDE FOR STRAIGHT LINTEL REINF. AND 1'-0" FOR LINTEL REINF. WITH STANDARD ACI HOOK.