

**DAMMON ENGINEERING, INC.**

CHIEF ENGINEER  
EMMETT DAMMON, P.E.

CHIEF ARCHITECT  
ROBERT WILTSE

554 OLD SPANISH TRAIL  
SLIDELL, LA. 70458  
OFFICE: 985-649-5832  
FAX: 985-641-5950

WEBSITE:  
WWW.DAMMONENGINEERING.COM

EMAIL:  
DAMMONENG@BELLSOUTH.NET

ARCHITECTURE

ENGINEERING

STUDIES

PLANNING

INVESTIGATION

EXPERT WITNESS

**RAIN FOREST CARWASH**

3017  
PONTCHARTRAIN DRIVE  
SLIDELL, LA  
70458

**ELECTRICAL LIGHTING PLAN & NOTES**

REV:

SCALE: AS NOTED

JOB#: 2085

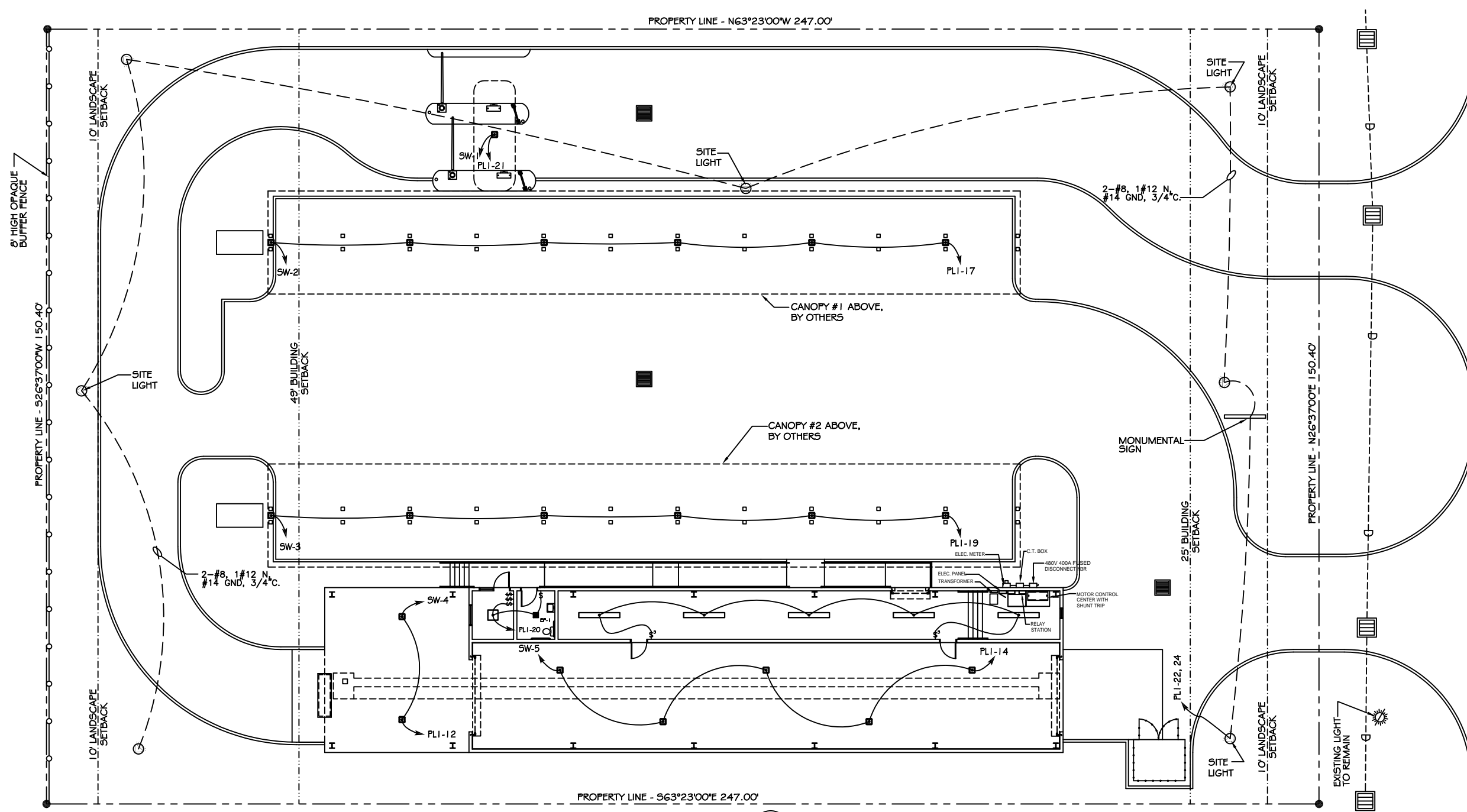
DATE: 03-23-11

SHEET 24

**E-2**

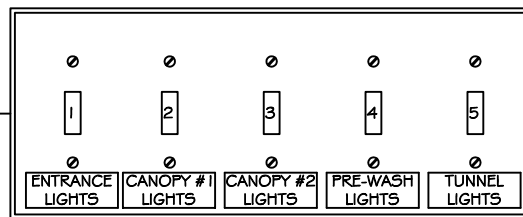
OF 25

PROPERTY LINE - N63°23'00"W 247.00'



**ELECTRICAL LIGHTING PLAN**

SCALE: 1"=10'



+46" AFF

5-GANG LIGHT SWITCH COVERPLATE

PROVIDE PERMANENT, TYPED LABELS AS SHOWN.

1 Switch Detail  
Scale: Not To Scale

**LIGHTING LEGEND**

- POLE LIGHT, METAL HALIDE (400W) 208V, PHOTOCELL CONTROLLED, WITH 20° ANGLED BRACKET AND 25 FEET POLE RATED AT 130 MPH.
- 2'x4' FLUORESCENT LIGHT (128W) 120V 10
- 2'x2' FLUORESCENT LIGHT (100W) 120V 10
- SCOTTSDALE SC320 PSMV PULSE-START METAL HALIDE LIGHT (320W) 120 V 10
- 1'x8' FLUORESCENT LIGHT STRIP (128W) 120V 10
- EXHAUST FAN/LIGHT COMBO (90 w EA.)
- EXIT/EMERGENCY LIGHT COMBO W/ 90 MIN. BATTERY BACKUP (12W)
- EXTERIOR WATERPROOF WALL MOUNTED H.P. METAL HALIDE LIGHT (175W)
- SWITCH
- SWITCH (THREE-WAY)
- POWER PANEL

EXISTING LIGHT TO REMAIN

PONTCHARTRAIN BOULEVARD