

**DAMMON ENGINEERING, INC.**

CHIEF ENGINEER  
EMMETT  
DAMMON, P.E.

CHIEF ARCHITECT  
ROBERT  
WILTSE

1095 FLORIDA AVENUE  
SLIDELL, LA. 70458  
OFFICE: 985-649-5832  
FAX: 985-641-5950

WEBSITE:  
WWW.DAMMONENGINEERING.COM

EMAIL:  
DAMMONENG@BELLSOUTH.NET

ARCHITECTURE  
ENGINEERING  
STUDIES  
PLANNING  
INVESTIGATION  
EXPERT WITNESS

RAIN FOREST  
CARWASH

3017  
PONTCHARTRAIN  
DRIVE  
SLIDELL, LA  
70458

EXTERIOR  
ELEVATIONS

REV:

SCALE: AS NOTED

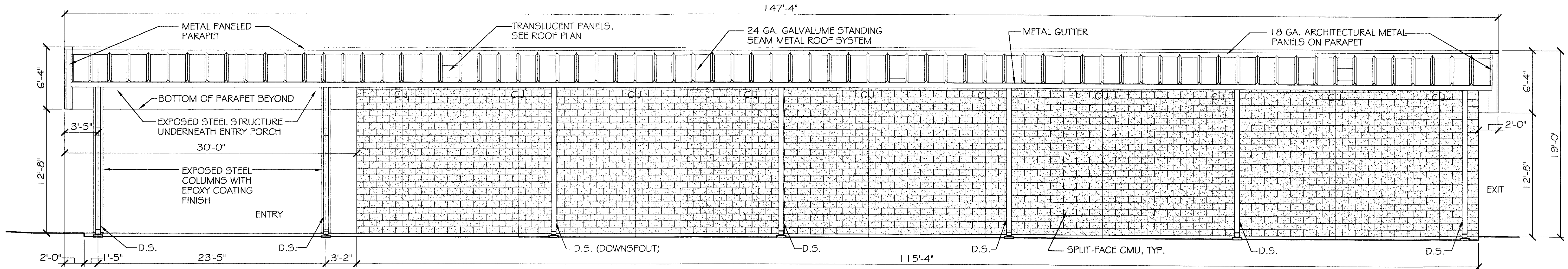
JOB#: 2085

DATE: 01-17-11

SHEET 18

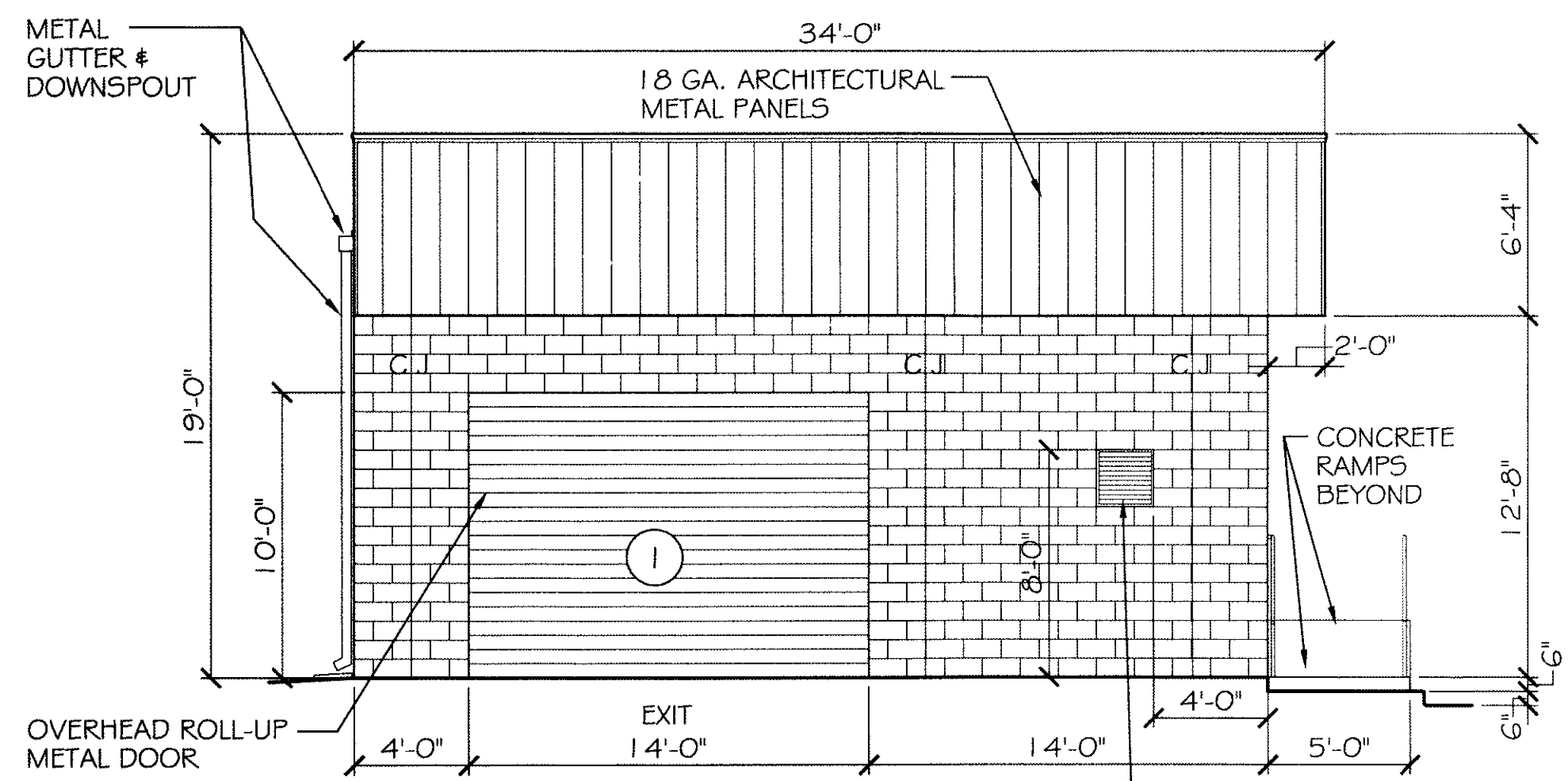
A-3

OF 25



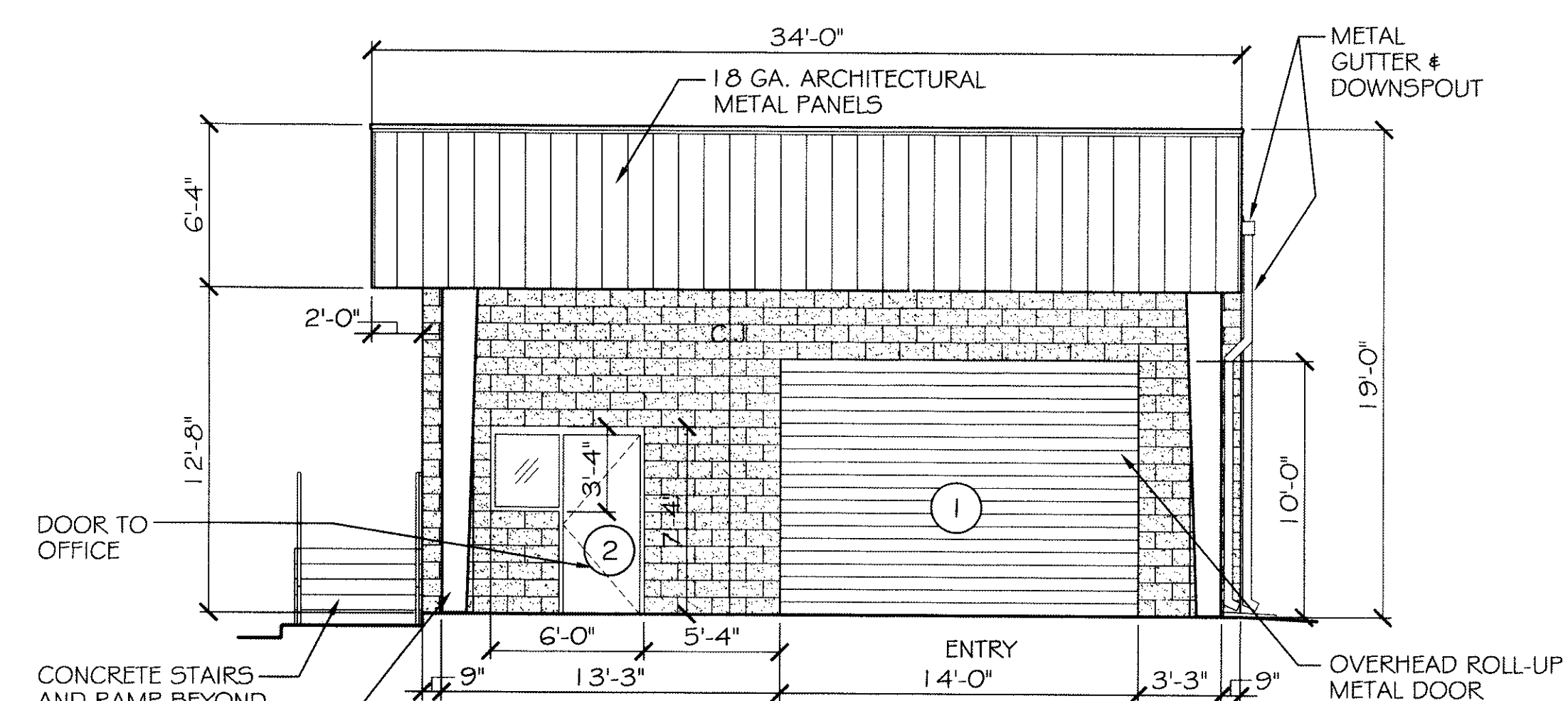
**SOUTHWEST (REAR) ELEVATION**

SCALE: 3/16"=1'-0"



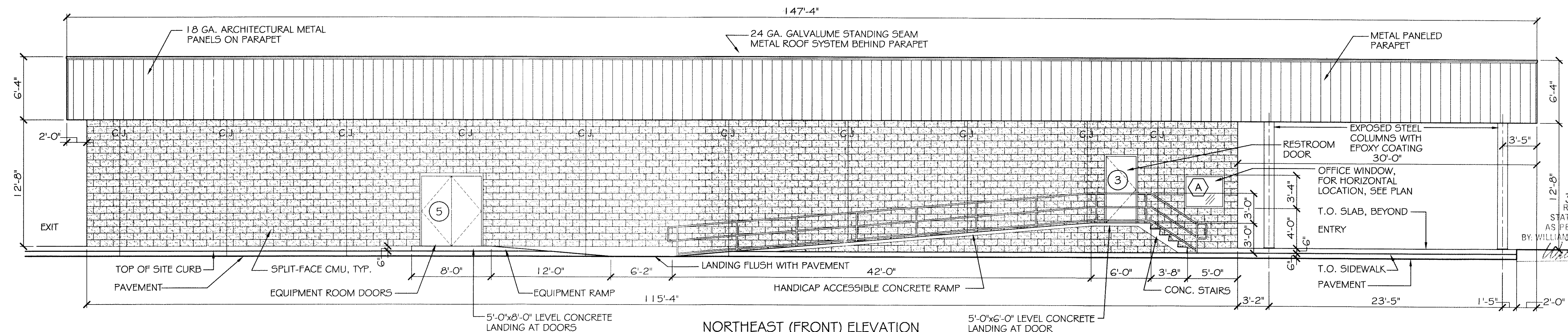
**SOUTHEAST (EXIT) ELEVATION**

SCALE: 3/16"=1'-0"



**NORTHWEST (ENTRY) ELEVATION**

SCALE: 3/16"=1'-0"



**NORTHEAST (FRONT) ELEVATION**

SCALE: 3/16"=1'-0"

392868  
REVIEWED FOR  
STATE FIRE MARSHAL  
AS PER REVIEW LETTER  
BY WILLIAM D. JONES, ARCHITECT

*Robert Wiltse*