

DAMMON ENGINEERING, INC.

CHIEF ENGINEER
EMMETT DAMMON, P.E.

CHIEF ARCHITECT
ROBERT WILTSE

1095 FLORIDA AVENUE
SLIDELL, LA. 70458
OFFICE: 985-649-5832
FAX: 985-641-5950

WEBSITE:
WWW.DAMMONENGINEERING.COM

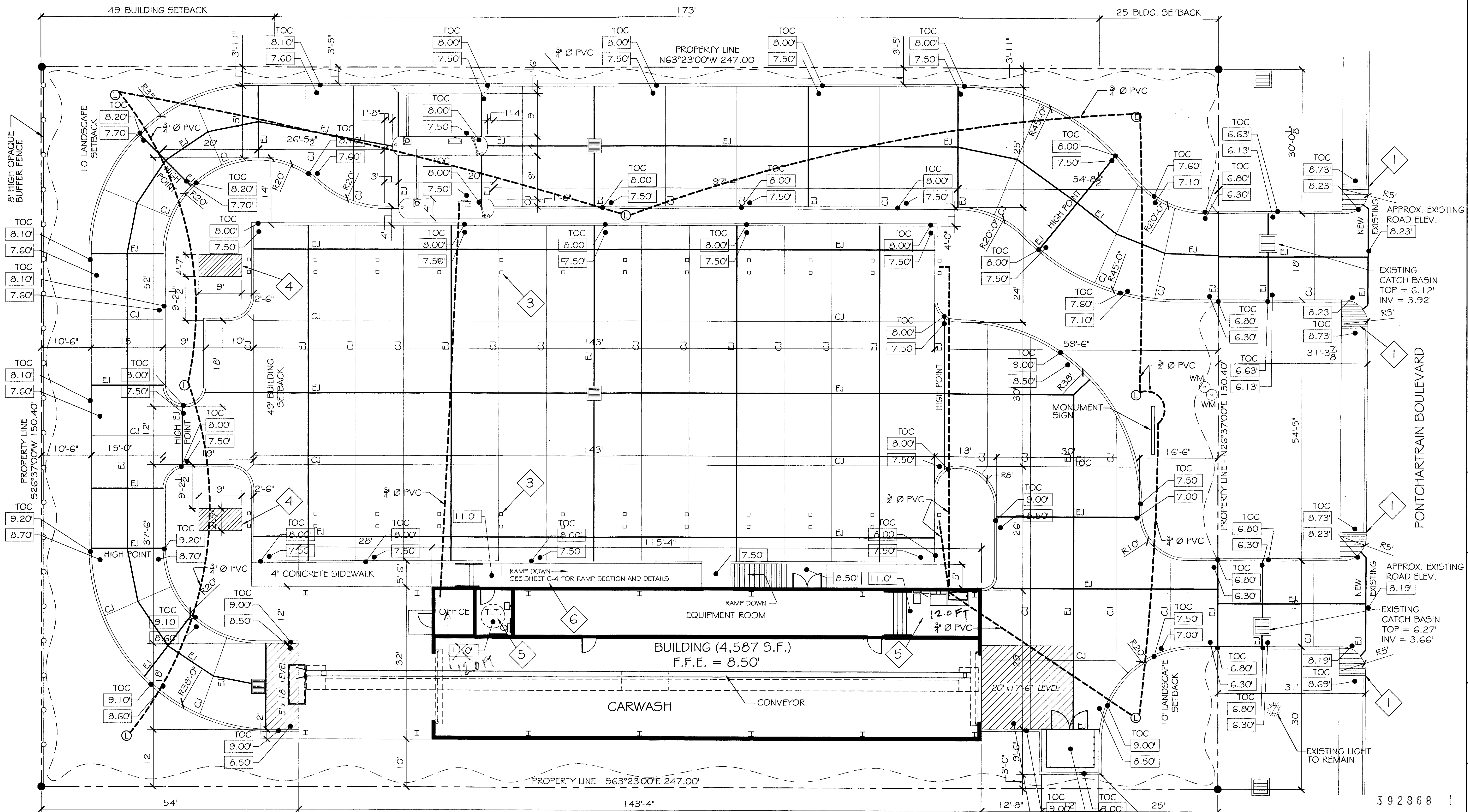
EMAIL:
DAMMONENG@BELLSOUTH.NET

ARCHITECTURE
ENGINEERING
STUDIES
PLANNING
INVESTIGATION
EXPERT WITNESS

RAIN FOREST
CARWASH

3017
PONTCHARTRAIN
DRIVE
SLIDELL, LA
70458

SITE
PAVING PLAN



PAVING PLAN NOTES:

- EXISTING SIDEWALK ALONG PONCHARTRAIN BLVD TO REMAIN. CONTRACTOR SHALL MODIFY SIDEWALK AT DRIVEWAYS FOR HCP RAMPS AS SHOWN. MAX SLOPE 1:12, WITH "DETECTABLE WARNING" SEE SHEET C-9 SIDEWALK NOTE #6. ALL NEW CONCRETE CURBS TO MATCH EXISTING.
- DUMPSTER PAD SHALL BE 8" THICK 3000 PSI CONCRETE, 12' x 9'-6". PROVIDE 8' HIGH WOODEN FENCE ENCLOSURE WITH LOCKABLE FULL HEIGHT DOUBLE GATES.
- LOCATION OF CANOPY COLUMNS (BY OTHERS). PRIOR TO CONSTRUCTION, COORDINATE WITH OWNER FOR LOCATION OF ANY REQUIRED COLUMN FOOTINGS, ANCHORAGE, ACCESSORIES, ETC.
- CONCRETE EQUIPMENT PEDESTAL. TOP OF CONCRETE @ ELEVATION 11.0' B.F.E., 9' x 4'-7" x MIN 24" THICK. SEE DETAIL ON SHEET C-4.
- TOILET ROOM AND ELEVATED MECH ROOM PLATFORM @ ELEVATION 11.0' B.F.E. SEE FOUNDATION PLAN FOR DETAILS.
- CONCRETE HCP RAMP. MAX SLOPE 1:12 WITH HANDRAILS AND GUARD RAILS. LEVEL LANDINGS AT TOP (11.0') AND BOTTOM (7.5') SEE DETAILS ON SHEET C-4.

SITE PAVING PLAN
SCALE: 1"=10'

LEGEND

- PROPERTY LINE
- - - - - BUILDING SETBACK MIN.
- ▭ NEW BUILDING
- ▭ NEW DROP INLET w/TEMP. SILT FENCING
- - - - - CONTROL JOINT
- - - - - EXPANSION JOINT
- # T.O. GRATE ELEVATION
- - - - - 3/4" Ø PVC FOR ELEC.
- ⊙ INVERT ELEVATION
- 00.00 NEW ELEVATIONS
- - - - - TEMPORARY SILT FENCING
- - - - - NEW 6" CURB, SEE DETAIL.
- NEW 6" PIPE BOLLARDS
- EXISTING SURVEY TOPO POINTS
- ⊙ LIGHT POLE BASE SEE DETAIL SHT. C-4

392868
REVIEWED FOR
STATE FIRE MARSHAL
AS PER REVIEW LETTER
BY WILLIAM D. JONES, ARCHITECT, C.B.
William D. Jones

REV:
SCALE: AS NOTED
JOB#: 2085
DATE: 01-17-11
SHEET 4
C-3
OF 25

Robert Wiltse