

DAMMON ENGINEERING, INC.

CHIEF ENGINEER
EMMETT DAMMON, P.E.

CHIEF ARCHITECT
ROBERT WILTSE

1095 FLORIDA AVENUE
SLIDELL, LA. 70458
OFFICE: 985-649-5832
FAX: 985-641-5950

WEBSITE:
WWW.DAMMONENGINEERING.COM

EMAIL:
DAMMONENG@BELLSOUTH.NET

ARCHITECTURE
ENGINEERING
STUDIES
PLANNING
INVESTIGATION
EXPERT WITNESS

RAIN FOREST CARWASH

3017 PONTCHARTRAIN DRIVE
SLIDELL, LA 70458

SITE DRAINAGE PLAN

REV:

SCALE: AS NOTED

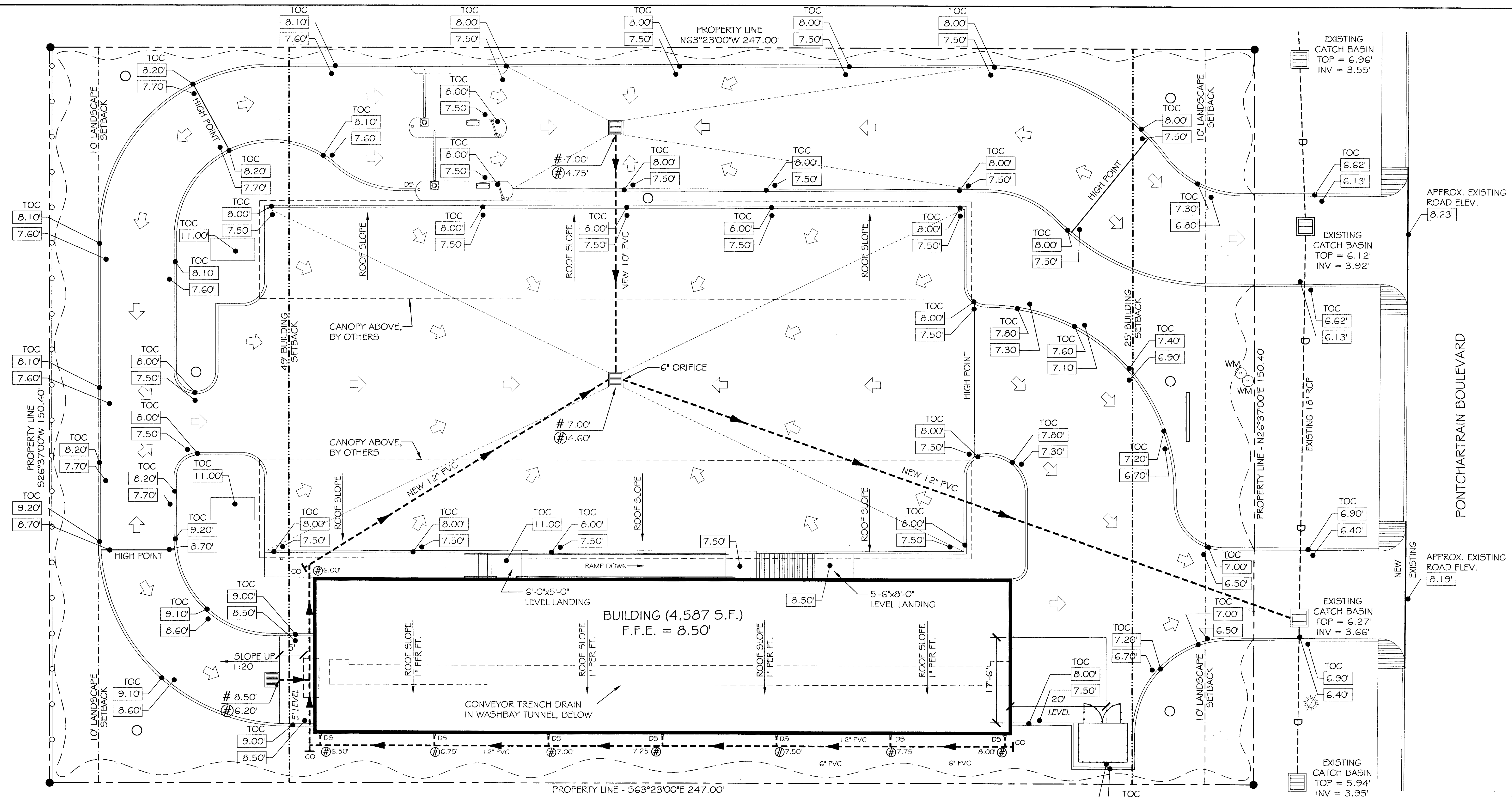
JOB#: 2085

DATE: 01-17-11

SHEET 6

C-5

OF 25



SITE DRAINAGE PLAN
SCALE: 1"=10'

LEGEND

- - - - - PROPERTY LINE
- - - - - UTILITY / EASEMENT LINE
- - - - - BUILDING SETBACK MINIMUM
- - - - - LANDSCAPING SETBACK MINIMUM AND BUFFER ZONE LIMITS AT REAR
- - - - - NEW BUILDING
- - - - - NEW DRAIN LINE
- - - - - TEMPORARY SILT FENCING
- SHEET FLOW DIRECTION
- # T.O. GRATE ELEVATION
- ⊕ INVERT ELEVATION
- # 0.00' NEW ELEVATIONS
- x00.00' EXISTING ELEVATIONS

392868
REVIEWED FOR
STATE FIRE MARSHAL
AS PER REVIEW LETTER
BY: WILLIAM D. JONES, ARCHITECT, C80
William D. Jones

Robert Wiltse