

**DAMMON**  
ENGINEERING, INC.

CHIEF ENGINEER  
EMMETT  
DAMMON, P.E.

CHIEF ARCHITECT  
ROBERT  
WILTSE

1095 FLORIDA AVENUE  
SLIDELL, LA. 70458  
OFFICE: 985-649-5832  
FAX: 985-641-5950

WEBSITE:  
WWW.DAMMONENGINEERING.COM

EMAIL:  
DAMMONENG@BELLSOUTH.NET

ARCHITECTURE  
ENGINEERING  
STUDIES  
PLANNING  
INVESTIGATION  
EXPERT WITNESS

RAIN FOREST  
CARWASH

3017  
PONTCHARTRAIN  
DRIVE  
SLIDELL, LA  
70458

SITE  
UTILITIES &  
ILLUMINATION  
PLAN

REV:

SCALE: AS NOTED

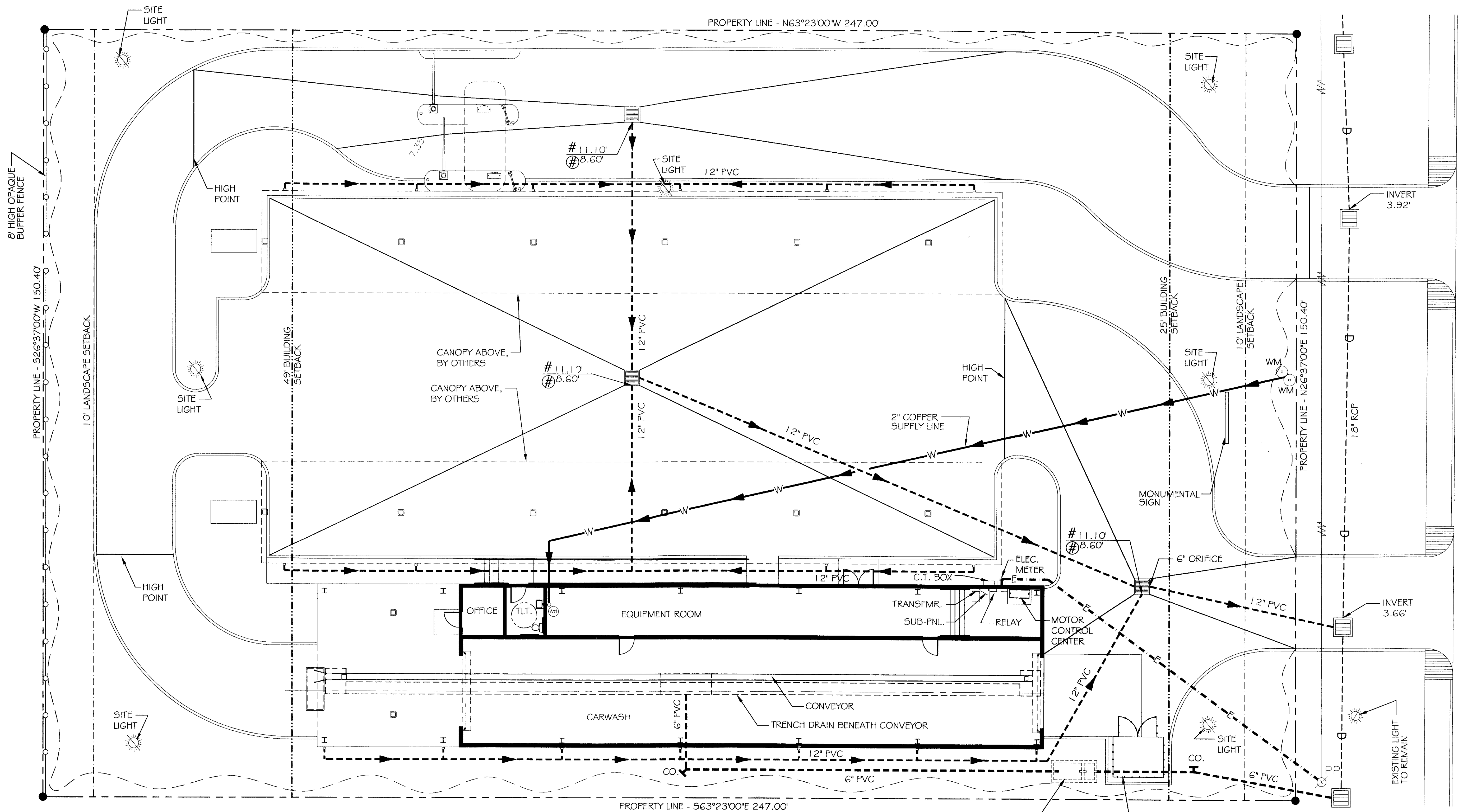
JOB#: 2085

DATE: 01-17-11

SHEET 8

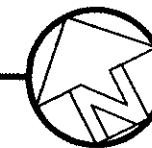
C-7

OF 25



**SITE UTILITIES & ILLUMINATION PLAN**

SCALE: 1"=10'



**LEGEND**

- |       |  |               |                       |
|-------|--|---------------|-----------------------|
| —     | - PROPERTY LINE  | — W —         | - NEW WATER LINE      |
| - - - | - BUILDING SETBACK   | - - - S - - - | - NEW SEWER LINE      |
| - - - | - LANDSCAPING SETBACK<br>MINIMUM AND BUFFER<br>ZONE LIMITS AT REAR | - - - E - - - | - NEW POWER LINE      |
| —     | - NEW BUILDING OUTLINE   | - - -         | - SILT FENCING DETAIL |
|       |  | - - -         | - NEW DRAIN LINE      |

REVIEWED FOR  
STATE FIRE MARSHAL  
AS PER REVIEW LETTER  
BY WILLIAM D. JONES, ARCHITECT, CBO

*William D. Jones*

392868

Robert Wiltse