

DAMMON
ENGINEERING, INC.

CHIEF ENGINEER
EMMETT
DAMMON, P.E.

CHIEF ARCHITECT
ROBERT
WILTSE

1095 FLORIDA AVENUE
SLIDELL, LA. 70458
OFFICE: 985-649-5832
FAX: 985-641-5950

WEBSITE:
WWW.DAMMONENGINEERING.COM

EMAIL:
DAMMONENG@BELLSOUTH.NET

ARCHITECTURE
ENGINEERING
STUDIES
PLANNING
INVESTIGATION
EXPERT WITNESS

RAIN FOREST
CARWASH

3017
PONTCHARTRAIN
DRIVE
SLIDELL, LA
70458

ELECTRICAL
LIGHTING
PLAN
& NOTES

392868
REVIEWED FOR
STATE FIRE MARSHAL
AS PER REVIEW LETTER
BY WILLIAM D. JONES, ARCHITECT, CRO

William D. Jones

REV: *Robert Wiltse*

SCALE: AS NOTED

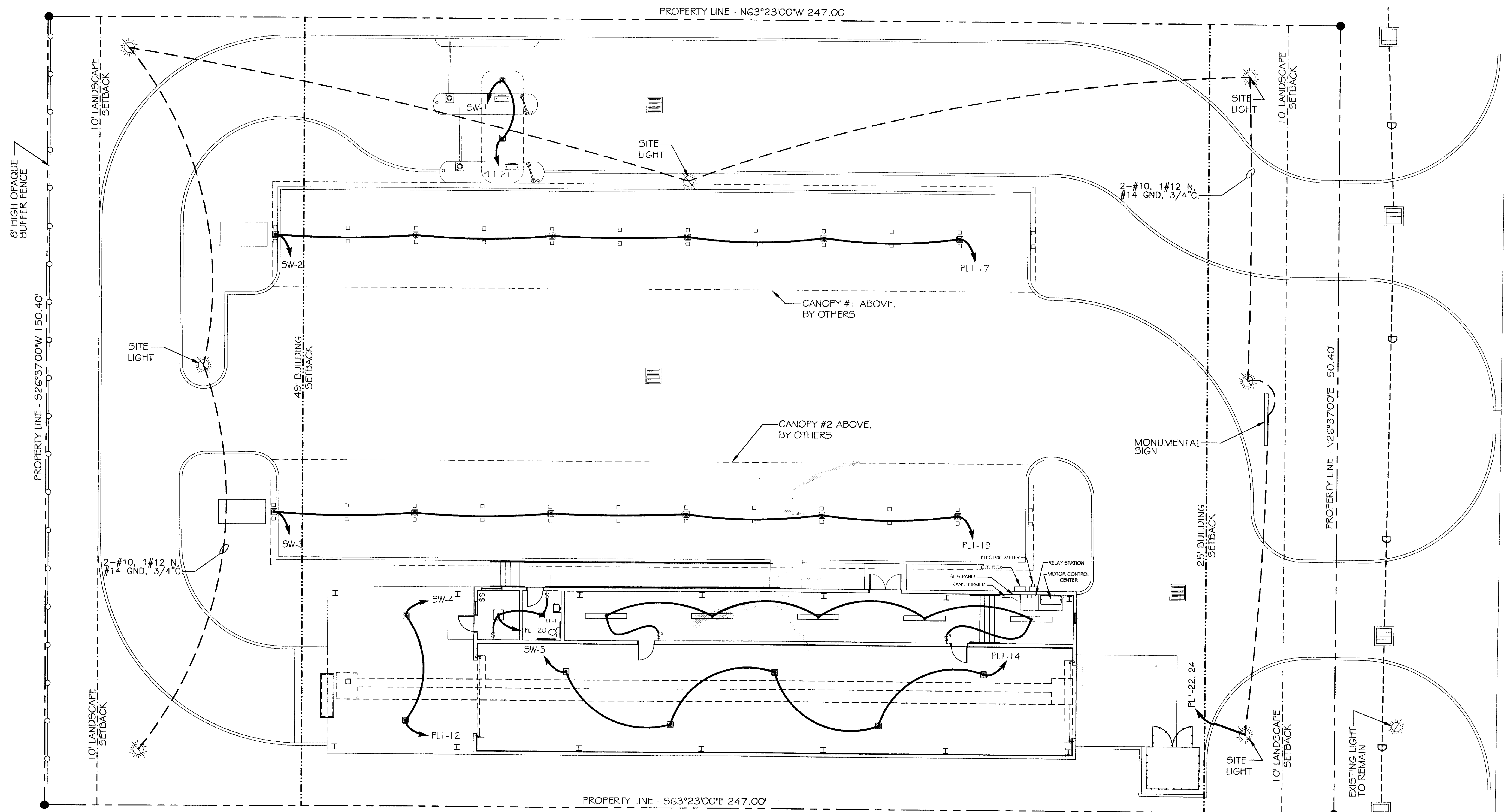
JOB#: 2085

DATE: 01-17-11

SHEET 24

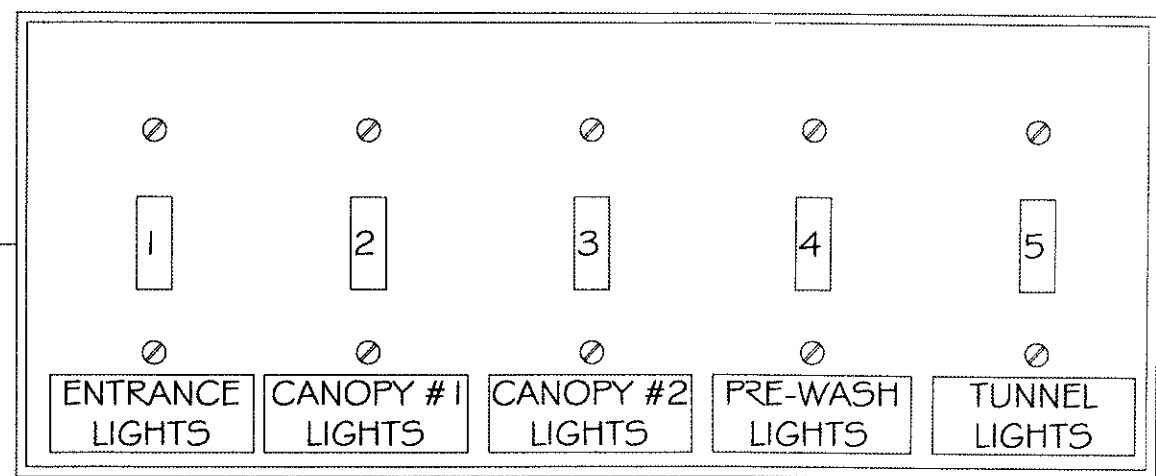
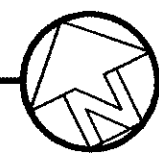
E-2

OF 25



ELECTRICAL LIGHTING PLAN

SCALE: 1"=10'



+46" AFF

1 Switch Detail
Scale: Not To Scale

LIGHTING LEGEND

- POLE LIGHT, METAL HALIDE (400W) 208V, PHOTOCELL CONTROLLED, WITH 20° ANGLED BRACKET AND 25 FEET POLE RATED AT 130 MPH.
- 2x4' FLUORESCENT LIGHT (128W) 120V 1Ø
- 2x2' FLUORESCENT LIGHT (100W) 120V 1Ø
- SCOTTSDALE SC320 PSMV PULSE-START METAL HALIDE LIGHT (320W) 120 V 1Ø
- 1x8' FLUORESCENT LIGHT STRIP (128W) 120V 1Ø
- EXHAUST FAN/LIGHT COMBO (90 w EA.)
- EXIT/EMERGENCY LIGHT COMBO W/ 90 MIN. BATTERY BACKUP (12W)
- EXTERIOR WATERPROOF WALL MOUNTED H.P. METAL HALIDE LIGHT (175W)
- SWITCH
- SWITCH (THREE-WAY)
- POWER PANEL

PONTCHARTRAIN BOULEVARD

8' HIGH OPAQUE BUFFER FENCE

PROPERTY LINE - S26°37'00"W 150.40'

10' LANDSCAPE SETBACK

49' BUILDING SETBACK

SW-3

PLI-12

SW-4

SW-5

PLI-20

PLI-21

SW-1

PLI-17

PLI-19

PLI-14

PLI-22, 24

EXISTING LIGHT TO REMAIN

2-#10, 1#12 N, #14 GND, 3/4"C.

2-#10, 1#12 N, #14 GND, 3/4"C.

2-#10, 1#12 N, #14 GND, 3/4"C.

2-#10, 1#12 N, #14 GND, 3/4"C.

2-#10, 1#12 N, #14 GND, 3/4"C.

2-#10, 1#12 N, #14 GND, 3/4"C.

2-#10, 1#12 N, #14 GND, 3/4"C.

2-#10, 1#12 N, #14 GND, 3/4"C.

2-#10, 1#12 N, #14 GND, 3/4"C.

2-#10, 1#12 N, #14 GND, 3/4"C.

2-#10, 1#12 N, #14 GND, 3/4"C.

2-#10, 1#12 N, #14 GND, 3/4"C.

2-#10, 1#12 N, #14 GND, 3/4"C.

2-#10, 1#12 N, #14 GND, 3/4"C.

2-#10, 1#12 N, #14 GND, 3/4"C.

2-#10, 1#12 N, #14 GND, 3/4"C.

2-#10, 1#12 N, #14 GND, 3/4"C.

2-#10, 1#12 N, #14 GND, 3/4"C.

2-#10, 1#12 N, #14 GND, 3/4"C.

2-#10, 1#12 N, #14 GND, 3/4"C.

2-#10, 1#12 N, #14 GND, 3/4"C.

2-#10, 1#12 N, #14 GND, 3/4"C.

2-#10, 1#12 N, #14 GND, 3/4"C.

2-#10, 1#12 N, #14 GND, 3/4"C.

2-#10, 1#12 N, #14 GND, 3/4"C.

2-#10, 1#12 N, #14 GND, 3/4"C.

2-#10, 1#12 N, #14 GND, 3/4"C.

2-#10, 1#12 N, #14 GND, 3/4"C.

2-#10, 1#12 N, #14 GND, 3/4"C.

2-#10, 1#12 N, #14 GND, 3/4"C.

2-#10, 1#12 N, #14 GND, 3/4"C.

2-#10, 1#12 N, #14 GND, 3/4"C.

2-#10, 1#12 N, #14 GND, 3/4"C.

2-#10, 1#12 N, #14 GND, 3/4"C.

2-#10, 1#12 N, #14 GND, 3/4"C.

2-#10, 1#12 N, #14 GND, 3/4"C.

2-#10, 1#12 N, #14 GND, 3/4"C.

2-#10, 1#12 N, #14 GND, 3/4"C.

2-#10, 1#12 N, #14 GND, 3/4"C.

2-#10, 1#12 N, #14 GND, 3/4"C.

2-#10, 1#12 N, #14 GND, 3/4"C.

2-#10, 1#12 N, #14 GND, 3/4"C.

2-#10, 1#12 N, #14 GND, 3/4"C.

2-#10, 1#12 N, #14 GND, 3/4"C.

2-#10, 1#12 N, #14 GND, 3/4"C.

2-#10, 1#12 N, #14 GND, 3/4"C.

2-#10, 1#12 N, #14 GND, 3/4"C.

2-#10, 1#12 N, #14 GND, 3/4"C.

2-#10, 1#12 N, #14 GND, 3/4"C.

2-#10, 1#12 N, #14 GND, 3/4"C.

2-#10, 1#12 N, #14 GND, 3/4"C.

2-#10, 1#12 N, #14 GND, 3/4"C.

2-#10, 1#12 N, #14 GND, 3/4"C.

2-#10, 1#12 N, #14 GND, 3/4"C.

2-#10, 1#12 N, #14 GND, 3/4"C.

2-#10, 1#12 N, #14 GND, 3/4"C.

2-#10, 1#12 N, #14 GND, 3/4"C.

2-#10, 1#12 N, #14 GND, 3/4"C.

2-#10, 1#12 N, #14 GND, 3/4"C.

2-#10, 1#12 N, #14 GND, 3/4"C.

2-#10, 1#12 N, #14 GND, 3/4"C.

2-#10, 1#12 N, #14 GND, 3/4"C.

2-#10, 1#12 N, #14 GND, 3/4"C.

2-#10, 1#12 N, #14 GND, 3/4"C.

2-#10, 1#12 N, #14 GND, 3/4"C.

2-#10, 1#12 N, #14 GND, 3/4"C.

2-#10, 1#12 N, #14 GND, 3/4"C.

2-#10, 1#12 N, #14 GND, 3/4"C.

2-#10, 1#12 N, #14 GND, 3/4"C.

2-#10, 1#12 N, #14 GND, 3/4"C.

2-#10, 1#12 N, #14 GND, 3/4"C.

2-#10, 1#12 N, #14 GND, 3/4"C.

2-#10, 1#12 N, #14 GND, 3/4"C.

2-#10, 1#12 N, #14 GND, 3/4"C.

2-#10, 1#12 N, #14 GND, 3/4"C.

2-#10, 1#12 N, #14 GND, 3/4"C.

2-#10, 1#12 N, #14 GND, 3/4"C.

2-#10, 1#12 N, #14 GND, 3/4"C.

2-#10, 1#12 N, #14 GND, 3/4"C.

2-#10, 1#12 N, #14 GND, 3/4"C.

2-#10, 1#12 N, #14 GND, 3/4"C.

2-#10, 1#12 N, #14 GND, 3/4"C.

2-#10, 1#12 N, #14 GND, 3/4"C.

PROPERTY LINE - S63°23'00"E 247.00'

PROPERTY LINE - N63°23'00"W 247.00'

PROPERTY LINE - N26°37'00"E 150.40'

PROPERTY LINE - S26°37'00"W 150.40'

25' BUILDING SETBACK

10' LANDSCAPE SETBACK

10' LANDSCAPE SETBACK

10' LANDSCAPE SETBACK

10' LANDSCAPE SETBACK

10' LANDSCAPE SETBACK

10' LANDSCAPE SETBACK

10' LANDSCAPE SETBACK

10' LANDSCAPE SETBACK

10' LANDSCAPE SETBACK

10' LANDSCAPE SETBACK

10' LANDSCAPE SETBACK

10' LANDSCAPE SETBACK

10' LANDSCAPE SETBACK

10' LANDSCAPE SETBACK

10' LANDSCAPE SETBACK

10' LANDSCAPE SETBACK

10' LANDSCAPE SETBACK