

DAMMON
ENGINEERING, INC.

CHIEF ENGINEER
EMMETT
DAMMON, P.E.
CHIEF ARCHITECT
ROBERT
WILTSE

554 OLD SPANISH TRAIL
SUDELL, LA. 70458
OFFICE: 985-649-5832
FAX: 985-641-5950

WEBSITE:
WWW.DAMMONENGINEERING.COM
EMAIL:
DAMMONENG@BELL.SOUTH.NET

ARCHITECTURE
ENGINEERING
STUDIES
PLANNING
INVESTIGATION
EXPERT WITNESS

RAIN FOREST
CARWASH

3017
PONTCHARTRAIN
DRIVE
SUDELL, LA
70458

SITE
PLAN

REV:

SCALE: AS NOTED

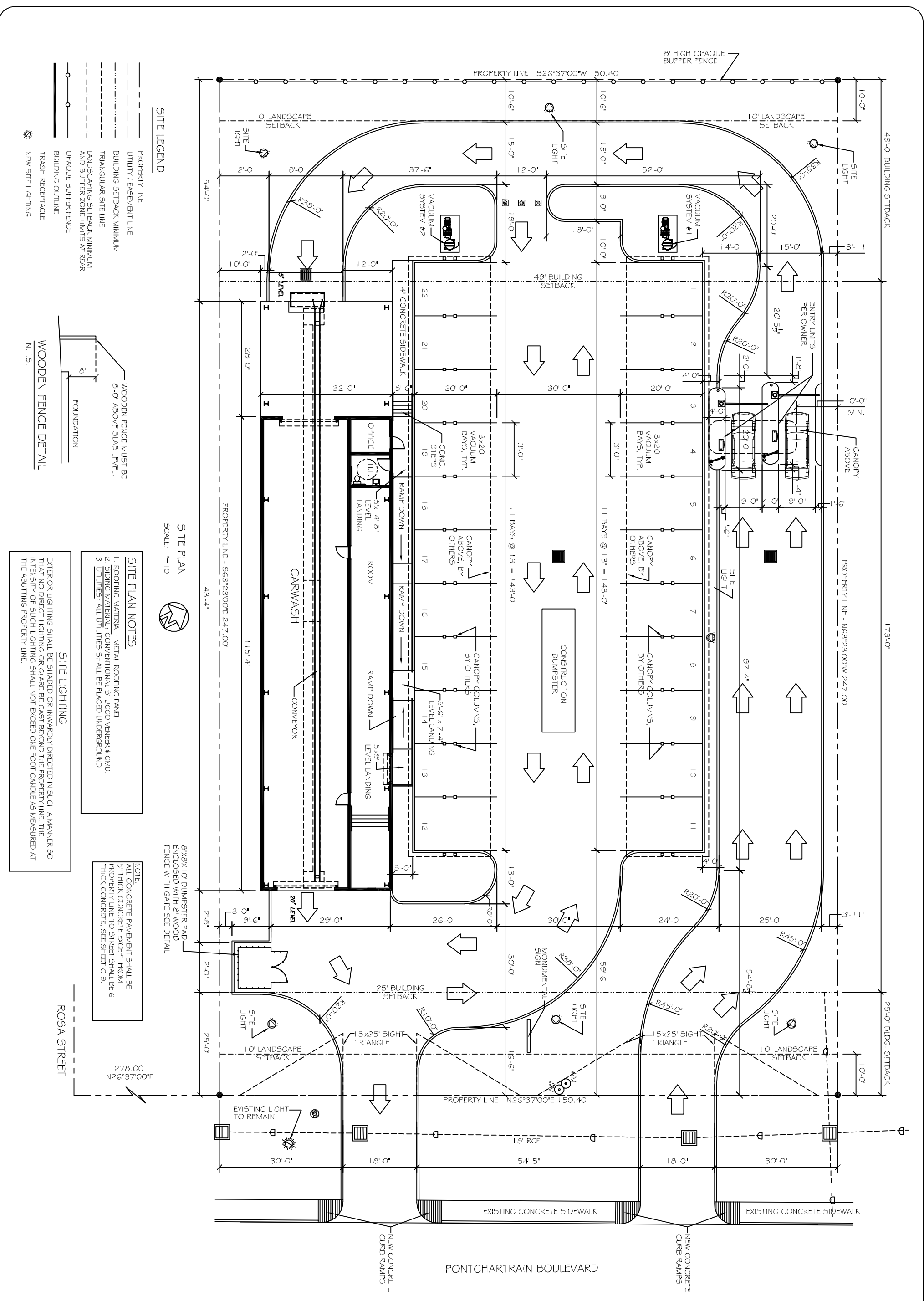
JOB#: 2085

DATE: 03-23-11

SHEET 3

C-2

OF 25



SITE PLAN
SCALE: 1"=10'

SITE PLAN NOTES

1. ROOFING MATERIAL: METAL ROOFING PANEL.
2. SIDING MATERIAL: CONVENTIONAL STUCCO VENER & CMU.
3. UTILITIES: ALL UTILITIES SHALL BE PLACED UNDERGROUND

SITE LIGHTING

EXTERIOR LIGHTING SHALL BE SHADED OR INWARDLY DIRECTED IN SUCH A MANNER SO THAT NO DIRECT LIGHTING OR GLARE BE CAST BEYOND THE PROPERTY LINE. THE INTENSITY OF SUCH LIGHTING SHALL NOT EXCEED ONE FOOT CANDLE AS MEASURED AT THE ADJUTING PROPERTY LINE.

NOTE:
ALL CONCRETE PAVEMENT SHALL BE 5" THICK CONCRETE EXCEPT FROM PROPERTY LINE TO STREET SHALL BE 6" THICK CONCRETE. SEE SHEET C-3.

8"X8" 10' DUMPSTER PAD ENCLOSED WITH 8" WOOD FENCE WITH GATE SEE DETAIL

SITE LEGEND

- PROPERTY LINE
- UTILITY / EASEMENT LINE
- BUILDING SETBACK MINIMUM
- TRIANGULAR SITE LINE
- LANDSCAPING SETBACK MINIMUM AND BUFFER ZONE LIMITS AT REAR
- OPAQUE BUFFER FENCE
- BUILDING OUTLINE
- TRASH RECEPTACLE
- NEW SITE LIGHTING

