

# CHAMPAGNE BUILDING, LLC 2242 CAREY STREET BUILD-OUT

- RENOVATION DETAILS:**
1. HURRICANE DAMAGED BUILDING.
  2. RENOVATIONS LESS THAN 50% VALUE OF BUILDING.
  3. BUILDING LOCATED IN SLIDELL HISTORIC PRESERVATION DISTRICT.
  4. BUILDING IN THE "MAIN STREET LOUISIANA" PROGRAM.

**INTERNATIONAL EXISTING BUILDING CODE 2006**

OCCUPANCY CLASSIFICATION:  
BUSINESS, GROUP B. (SEC 304.1)

ALTERATION CLASSIFICATION:  
LEVEL 2 (SEC 404.1)

OCCUPANT LOAD: (TBL 1004.1.1)  
BUSINESS AREAS = 100 GROSS SQ.FT. / OCCUPANT  
2,540 SQ.FT. GROSS BUILDING = TOTAL OF 25 OCCUPANTS

EXIT ACCESS TRAVEL DISTANCE: (SEC 101.6)  
EXIT ACCESS TRAVEL DISTANCE = 200' NON-SPRINKLED

EXIT ACCESS REQUIREMENTS: (SEC 101.9)  
EXIT REQUIRED FOR < 49 OCCUPANTS IN MERCANTILE OCCUPANCY (10 EXITS PROVIDED)  
EXIT ACCESS TRAVEL DISTANCE = 200' UNSPRINKLED

ALLOWABLE HEIGHT AND BLDG. AREA: (TBL 503)  
B=23,000 SQ.FT. / 4 STORY ALLOWED, THIS PROJECT 1 STORY / 2,540 SQ.FT.

CONSTRUCTION CLASSIFICATION: (SEC 602.2)  
TYPE VB

FIRE RESISTANCE RATING REQUIREMENTS FOR BLDG. ELEMENTS: (TBL 601)  
STRUCTURAL FRAME = 0 HRS.  
BEARING WALLS (INTERIOR AND EXTERIOR) = 0 HRS.  
NON-BEARING WALLS = 0 HRS.  
FLOOR CONSTRUCTION = 0 HRS.  
ROOF CONSTRUCTION = 0 HRS.

FIRE RESISTANCE RATING REQUIREMENTS FOR EXTERIOR WALLS: (TBL 602)  
EXTERIOR WALLS WITH < 30' FIRE SEPARATION DISTANCE = 0 HR.

FIRE ALARM SYSTEM REQUIREMENTS: (SEC 907)  
THIS BLDG. DOES NOT REQUIRE A FIRE ALARM SYSTEM IN ACCORDANCE WITH SEC 907.2.2

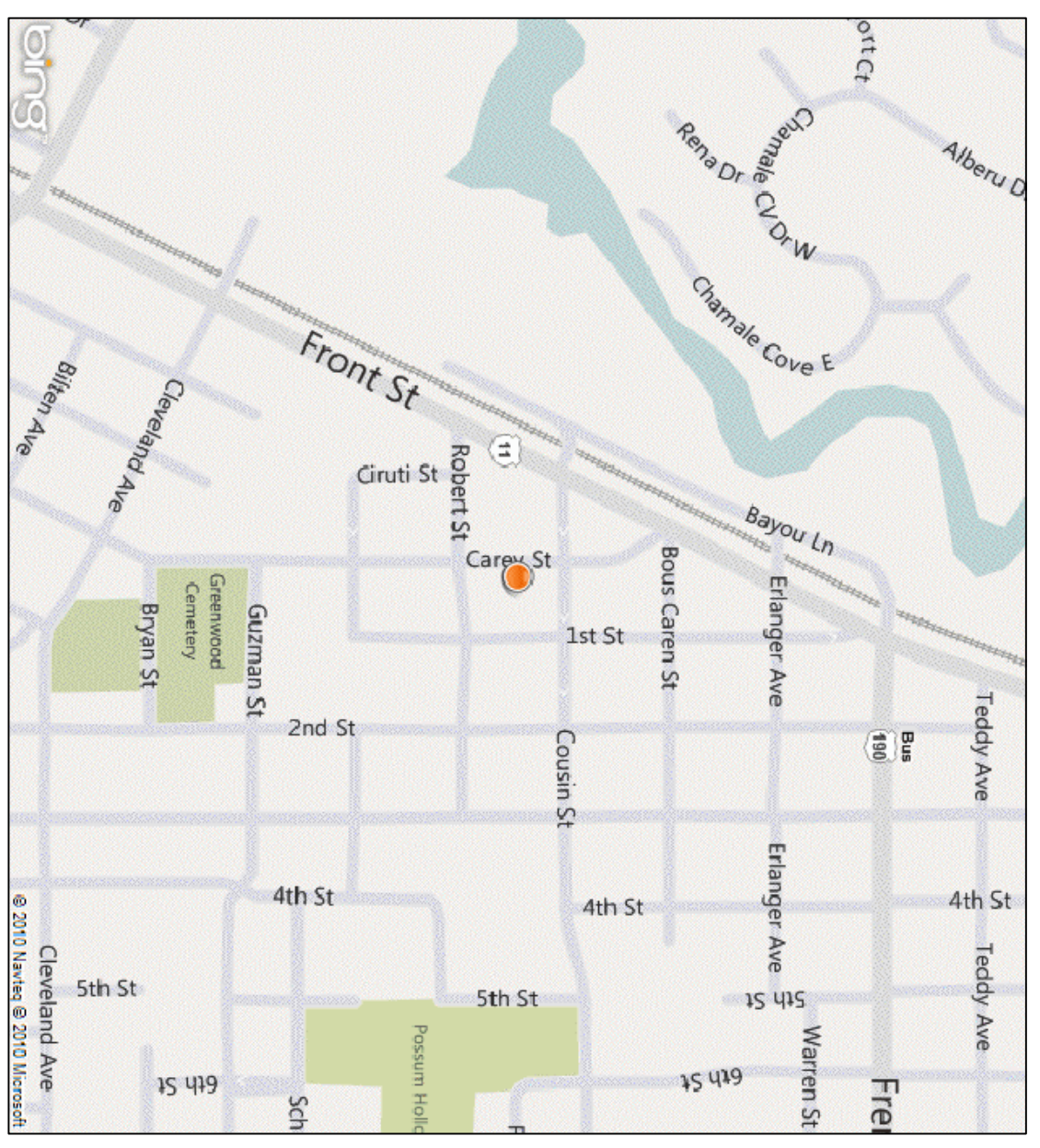
CONSTRUCTION DOCUMENTS: (SEC 1603)  
THIS BLDG. SHALL BE DESIGNED IN ACCORDANCE WITH IBC SECTION 1609 AS A FULLY ENCLOSED BLDG. USING THE FOLLOWING INFORMATION:

- WIND DESIGN DATA:  
DETERMINATION OF WIND LOADS SHALL BE IN ACCORDANCE WITH IBC SEC. 1609.4  
BASIC WIND SPEED (3 SECOND GUSTS) = 130 MPH (FIG. 1609)  
IMPORTANCE FACTOR: CATEGORY II BLDG., IE = 1.00, IS = 1.0, IW = 1.00 (TBL 1604.5)  
EXPOSURE B  
DESIGN WIND PRESSURE (ASCE 7-05 FIG. 6-2): 33.6 PSF  
INTERNAL PRESSURE COEFFICIENT (ASCE 7-05 FIG. 6-5): ± 0.18  
LIVE LOADS: (SEC 1607)  
LOBBIES AND 1st FLR. CORRIDOR (TBL. 1607.1): 100 PSF  
OFFICE (TBL. 1607.1): 50 PSF  
ROOF LIVE LOAD (TBL. 1607.1) = 20 PSF UNIFORM, 300 LB. CONCENTRATED  
GROUND SNOW LOAD (FIG. 1608.2) = 5 PSF

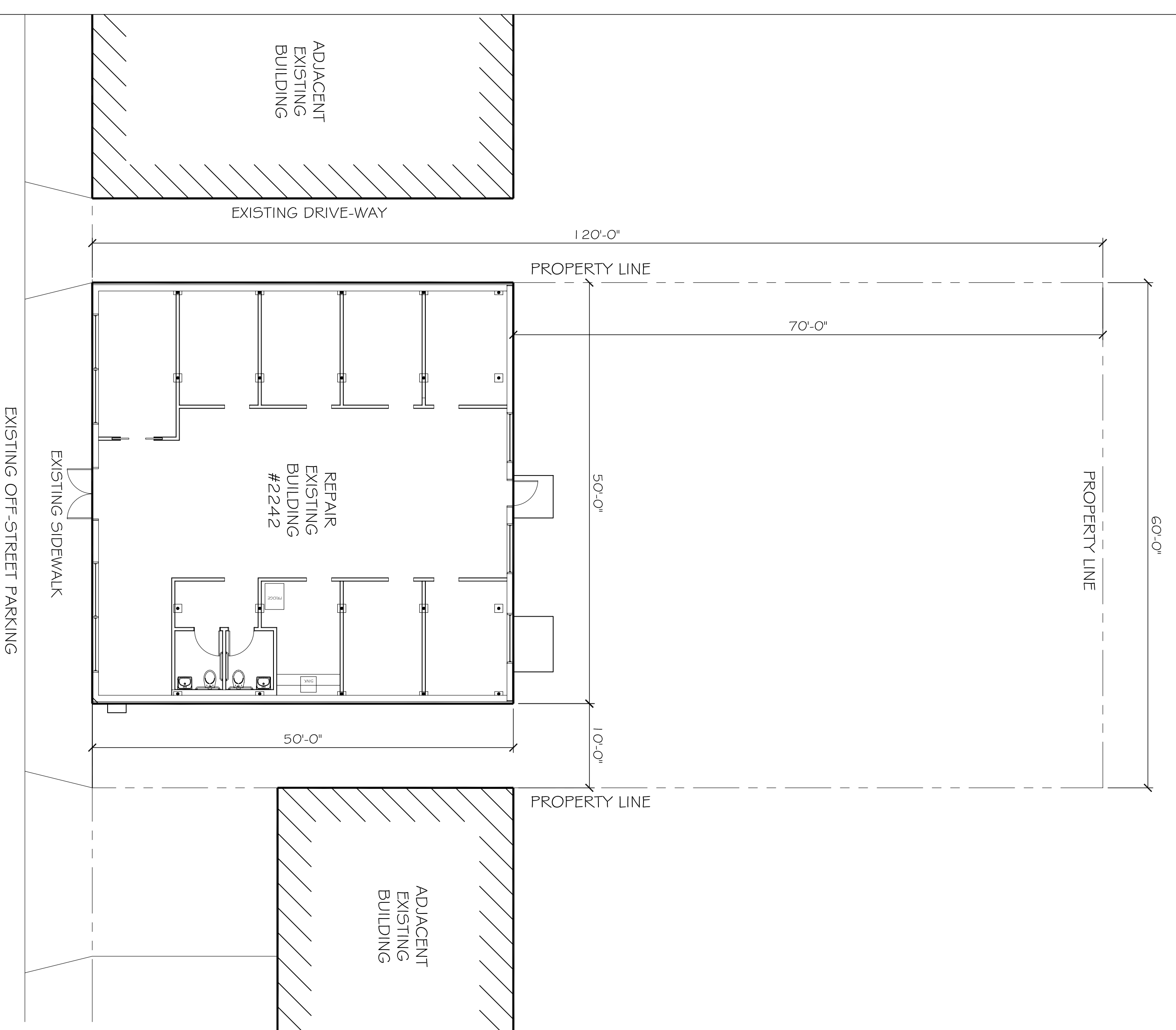
INDEX OF DRAWINGS

SHEET #	DWG#	DRAWING NAME
1		COVER SHEET / SITE PLAN
2	A-1	FLOOR PLAN
3	A-2	GROSS SECTION AND DETAILS
4	M-1	MECHANICAL PLAN
5	E-1	ELECTRICAL PLAN
6	P-1	PLUMBING PLAN

**2,540 SQ. FT.  
NON-SPRINKLED**

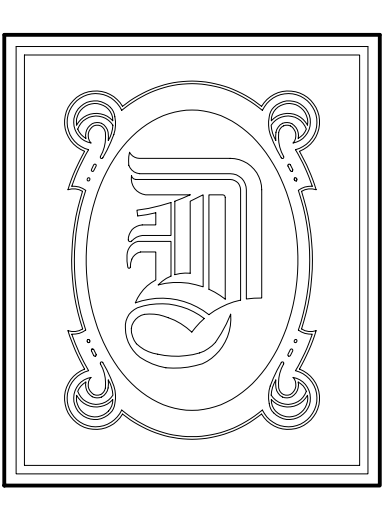


VICINITY MAP  
N.T.S.



SITE PLAN  
N.T.S.

PRELIMINARY (NOT FOR CONSTRUCTION)



**DAMMON ENGINEERING, INC.**  
1 095 FLORIDA AVE. OFFICE: (985) 649-5832  
SLIDELL, LA 70458 FAX: (985) 641-5950  
WEBSITE: WWW.DAMMONENGINEERING.COM  
EMAIL: DAMMONENG@BELLSOUTH.NET

DATE: 11-12-10  
JOB NO. 2086

CHAMPAGNE BUILDING LLC  
TENANT BUILD-OUT  
2242 CAREY STREET  
SLIDELL, LA 70458