



Estimate

Date	Estimate #
1/9/2013	9859

Name / Address
NON TAXABLE CASH SALE Design Drafter Dammon Engineering, Inc. 554 Old Spanish Trail 70458

Ship To
SLDELL LA

Terms	Rep	Shipping method
	MATT	

Item	Description	Qty	Cost	Total
1246TB	12"X46" STEP TREAD B/F W/ BOLTS	30	18.00	540.00
328TA2RO	TREAD ANGL,3X2X3/16X8 2 HOLE R	60	3.50	210.00
LAND	TREAD LANDINGS POURED IN PLANK UP TO 7'X7'X3" THICK	2	550.00	1,100.00
DLCH - CC	CLIENT TO DETERMINE SIZE OF PLANKS TO MANUFACTURE			
DLCH-EX	DELIVERY CHARGE - COMMON CARRIER	1	450.00	450.00
	IT IS THE CUSTOMER'S RESPONSIBILITY TO FURNISH EQUIPMENT AND LABOR TO UNLOAD THE TRUCKS, UNLESS OTHER ARRANGEMENTS ARE MADE. CAMP LOAN UTILIZES INDEPENDENT CARRIERS TO SHIP NATIONWIDE. DELIVERY ADDRESSES MUST BE CLEARLY DEFINED AND SITES MUST BE ACCESSIBLE BY A 75 FOOT LONG TRUCK AND TRAILER. IT IS THE CUSTOMER'S RESPONSIBILITY TO NOTIFY US OF ANY TRAVEL RESTRICTIONS IN THE JOB SITE ARE AND TO OBTAIN ANY SPECIAL ACCESS PERMITS DAMAGES OR SHORTAGES MUST BE NOTED IN WRITING ON BOL. INITIAL: X_____		0.00	0.00

			Subtotal	
QUOTES ARE VALID FOR 30 DAYS 30 % RESTOCKING CHARGE ON ALL RETURNS PLEASE SIGN AND FAX BACK			Sales Tax (0.0%)	
			Total	

Signature _____

Phone #	Fax #	E-mail	Web Site
713-869-3385	713-869-3362	clew@camplogancement.com	www.camplogancement.com



Estimate

Date	Estimate #
1/9/2013	9859

Name / Address
NON TAXABLE CASH SALE Design Drafter Dammon Engineering, Inc. 554 Old Spanish Trail 70458

Ship To
SLDELL LA

Terms

Rep	Shipping method
MATT	

Item	Description	Qty	Cost	Total
	Office: (985) 649-5832 Fax (985) 641-5950 dammonengineering.com			

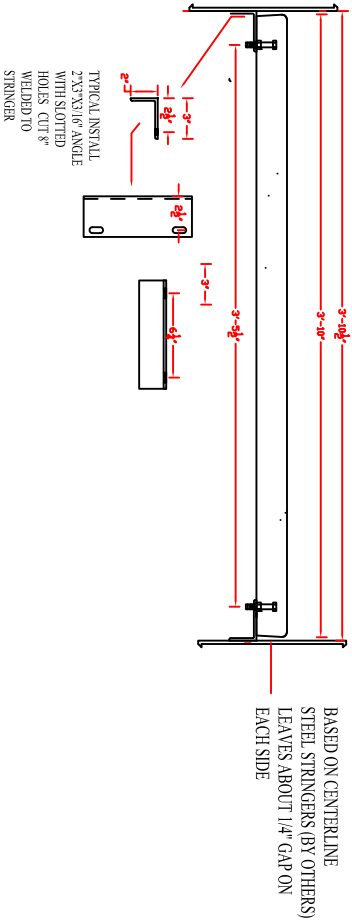
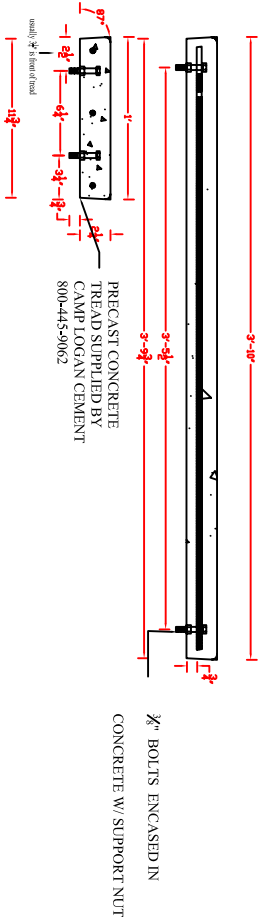
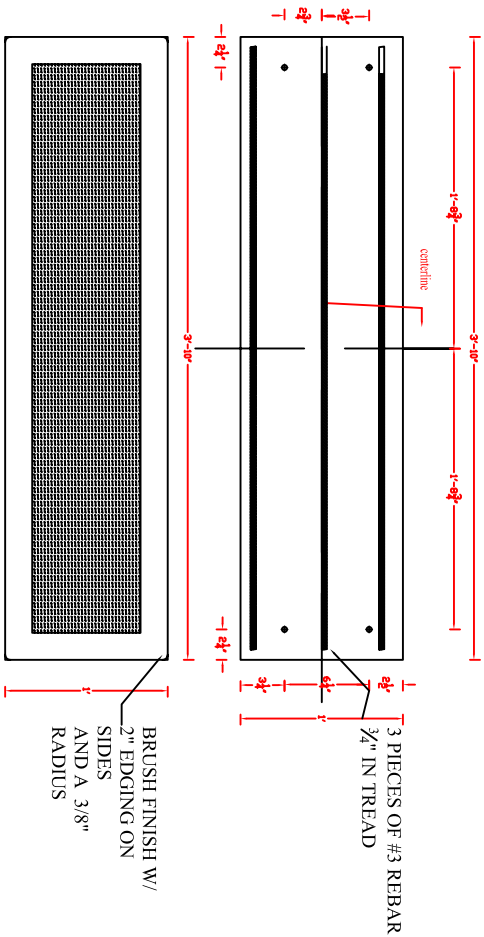
Subtotal			\$2,300.00
Sales Tax (0.0%)			\$0.00
Total			\$2,300.00

QUOTES ARE VALID FOR 30 DAYS
30 % RESTOCKING CHARGE ON ALL RETURNS
PLEASE SIGN AND FAX BACK

Signature _____

Phone #	Fax #	E-mail	Web Site
713-869-3385	713-869-3362	clew@camplogancement.com	www.camplogancement.com

Product Code **1246TB**
 12"x46" x 2'-4" Step Tread Broom Finish with 3/8" Bolts
 Camp Logan Cement Works Inc.
 www.camplogancement.com
 800-445-9062
 clcw@camplogancement.com

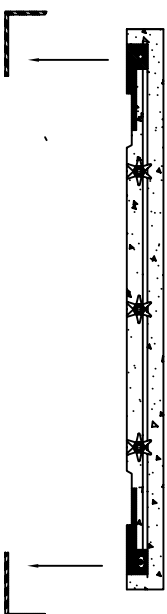
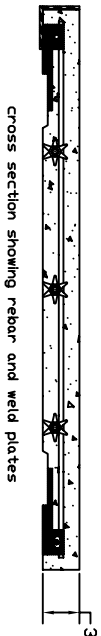


Drawing name LANDING INSTALL

Date:

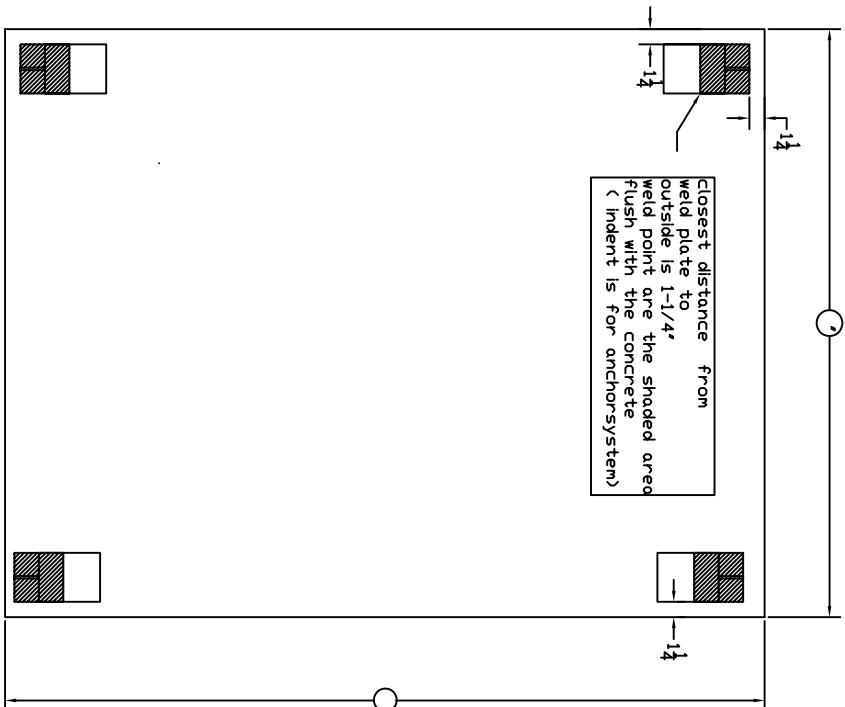
Quantity:

special instructions:



PLACE LANDINGS ON STRINGER (SUPPLIED BY OTHERS) WELD TO STRINGER WITH THE PLATES EMBEDDED IN THE CONCRETE

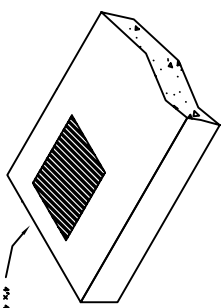
Closest distance from weld plate to outside is 1-1/4" weld point are the shaded area flush with the concrete (indent is for anchor system)



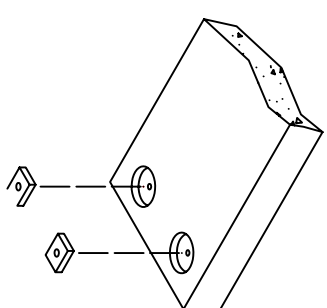
-Landings can be poured any size up to 84"x84"-Landings are poured 3" thick

-Landings are poured 3" thick

-Connection options are weld plate or zinc plated inserts



4 1/2" x 3 1/2" epoxy galvanized steel plate



4 1/2" x 3 1/2" zinc plated inserts