

GENERAL FOUNDATION NOTES

PILING NOTES:

- ALL PILES SHALL BE PRESSURE-TREATED ROUND TIMBER PILES CONFORMING TO ASTM D25. OVERALL.
- PILE SHALL BE A CLASS B PILE WITH A LENGTH OF 35 FEET.
- PILE CAPACITY HAS A DESIGN LOAD OF 10 TONS PER THE SUBSOIL INVESTIGATION BY GORE ENGINEERING, INC. DATED NOVEMBER 22, 2002.
- USE DROP HAMMER OR SINGLE ACTING AIR HAMMER DELIVERING 7,500 FT-LBS OF ENERGY PER BLOW. RAM WEIGHT OF DROP HAMMER SHALL NOT EXCEED 2,500 TO 3,000 LBS AND THE DROP SHOULD NOT EXCEED 3 FT., AT MAXIMUM OF 25 BLOWS PER FOOT. IF THE DROP EXCEEDS 3 FT., CONTACT ENGINEER FOR INSTRUCTIONS. VIBRATORY HAMMERS - CONTROL INSTALLATION OF PRODUCTION PILES WITH VIBRATORY HAMMERS ACCORDING TO THE POWER CONSUMPTION, RATE OF PENETRATION, SPECIFIED TIP ELEVATION, OR OTHER ACCEPTABLE MEANS WHICH ASSURE THE PILE RESISTANCE EQUALS OR EXCEEDS THE REQUIRED NOMINAL PILE BEARING RESISTANCE.
- HEAVED PILES: REDRIVE HEAVED PILES TO TIP ELEVATION AT LEAST AS DEEP AS ORIGINAL TIP ELEVATION WITH A DRIVING RESISTANCE AT LEAST AS GREAT AS ORIGINAL DRIVING RESISTANCE.
- TREAT ALL FIELD CUTS, HOLES OR OTHER PENETRATIONS INTO PILING'S IN ACCORDING TO ANPA M4, FIELD APPLIED WOOD PRESERVATIVE.
- MARK EACH PILE WITH HORIZONTAL LINES AT 12 INCH INTERVALS, LABEL THE DISTANCE FROM PILE TIP AT 60 INCH INTERVALS.
- CONTRACTOR SHALL NOTIFY THE ENGINEER AT LEAST 48 HOURS PRIOR TO PILE DRIVING SO THAT ENGINEER MAY OBSERVE PILE DRIVING.
- CONTRACTOR SHOULD PERFORM A VERY DETAILED PRE-CONSTRUCTION SURVEY OF THE EXISTING BUILDING AND DOCUMENT ALL VISIBLE DEFECTS, CRACKS, ANOMALIES AND ISSUES THAT COULD BE AFFECTED OR INFLUENCED BY ADJACENT CONSTRUCTION ACTIVITY. USE STILL PHOTOS AND VIDEO FOR THE SURVEY.
- CONTRACTOR SHALL INSTALL VIBRATION MONITORING UTILIZING A PORTABLE SEISMOGRAPH AND ACCELEROMETERS CALIBRATED IN THE EXPECTED VIBRATION RANGE OF THE ACTIVITY.

FOUNDATION NOTES

- THE CONCRETE MIX SHALL HAVE A MINIMUM COMPRESSIVE STRENGTH OF 4,000 PSI AT 28 DAYS. CONCRETE MIX SHALL BE IN ACCORDANCE WITH ACI-318.
- ALL CONVENTIONAL REINFORCING STEEL SHALL MEET ASTM-A615 (GRADE 60).
- ALL REINFORCING STEEL AND MESH SHALL BE SECURELY SUPPORTED TO PREVENT BOTH VERTICAL AND HORIZONTAL MOVEMENT DURING CONCRETE PLACEMENT.
- PROVIDE AND MAINTAIN IMMEDIATE SITE DRAINAGE BEFORE, DURING, AND AFTER CONSTRUCTION. PROVIDE GRADING, SWELLS, AND SUMP PUMPS AS MAY BE REQUIRED TO IMMEDIATELY DRAIN ALL RAINWATER FROM THE CONSTRUCTION AREA. FOOTING EXCAVATIONS SHALL BE OBSERVED AND CONCRETE PLACED AS QUICKLY AS POSSIBLE TO AVOID EXPOSURE OF THE FOOTING BOTTOMS TO WETTING AND DRYING. STANDING WATER SHALL NOT BE ALLOWED TO SOAK INTO THE FOOTINGS. SURFACE RUNOFF WATER SHALL BE DRAINED AWAY FROM THE EXCAVATIONS AND NOT BE ALLOWED TO POND PRIOR OR AFTER CONCRETE PLACEMENT. IF IT IS REQUIRED THAT A FOOTING EXCAVATIONS BE LEFT OPEN FOR MORE THAN ONE DAY, THEY SHOULD BE PROTECTED TO REDUCE EVAPORATION OR ENTRY OF MOISTURE.
- WHEN INSTALLING POST INSTALLED ANCHORS, USE SIMPSON ET-HP EPOXY ANCHORING ADHESIVE.

DAMMON
ENGINEERING, INC.

Architects & Engineers

www.dammonengineering.com
info@dammonengineering.com
PH: 985.649.5832
F: 985.641.5950

Chief Architect: Kevin J. Kitchin, NCAAB
Chief Engineer: Brian Mitchell, PE
554 Old Spanish Trail
Slidell, LA 70688

#	DESCRIPTION	DATE

SEAL:

REVISIONS TO:
HONDA OF SLIDELL

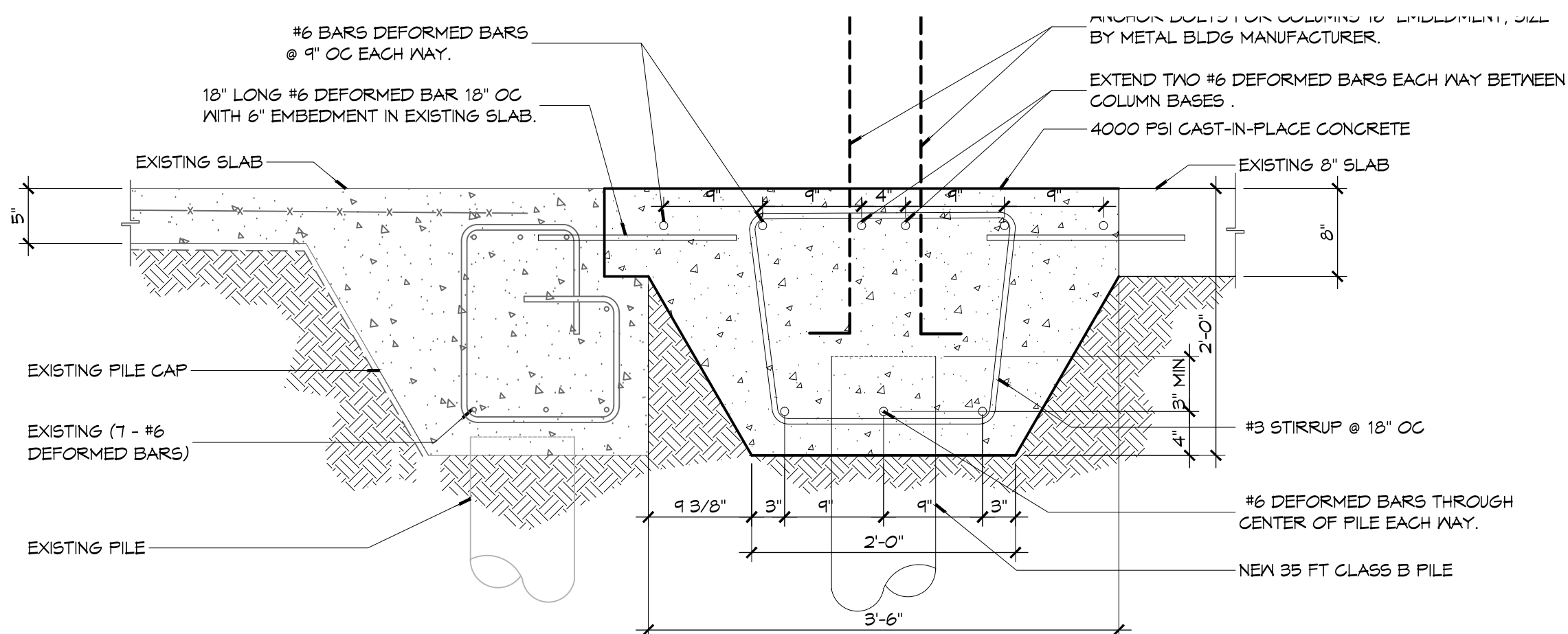
510 EAST HONDA BEACH ROAD
SLIDELL, LA 70661

JOB No: 2334 DATE: MAY 1, 2015
DRAWN BY: DFP CHECKED BY: DFP

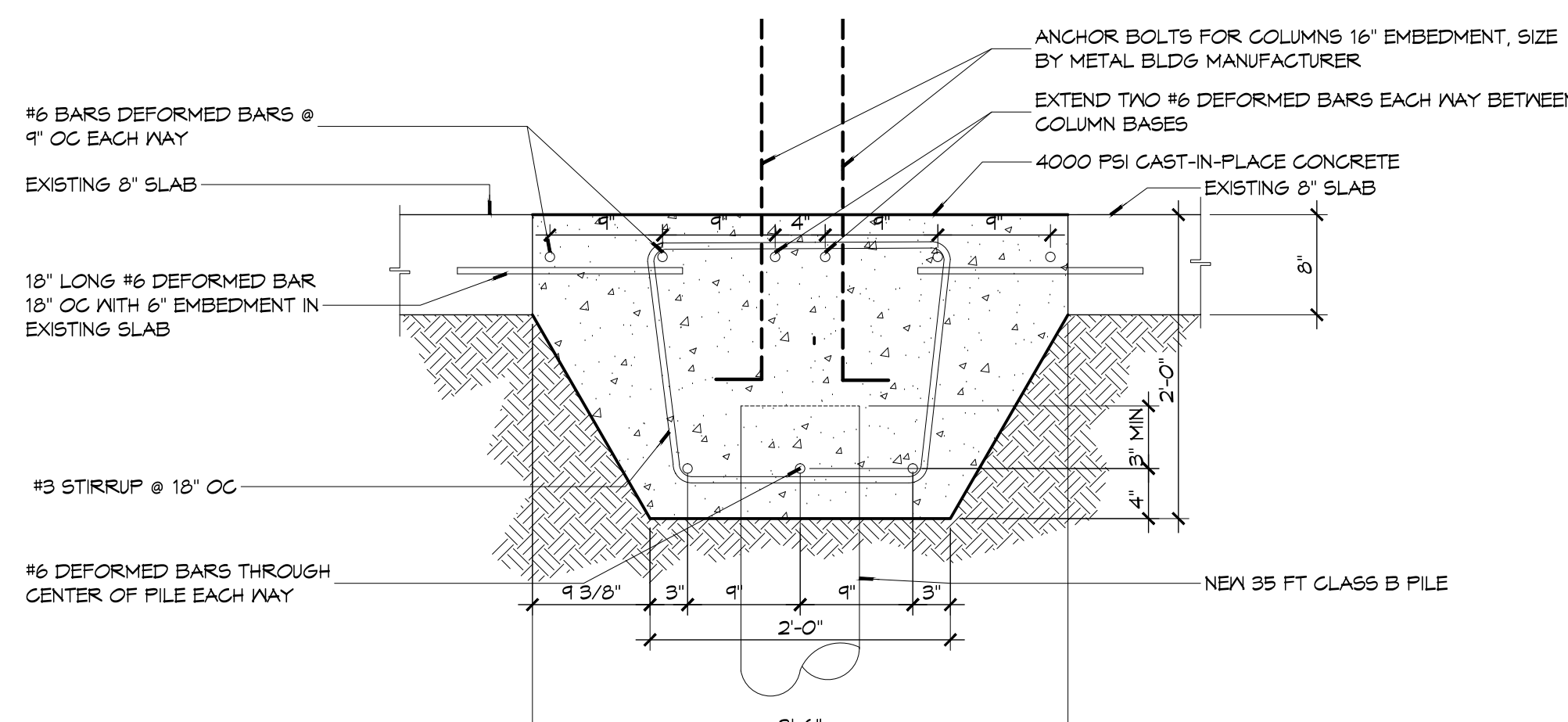
SHEET TITLE:
FOUNDATION PLAN AND DETAILS

DRAWING NUMBER:
S101

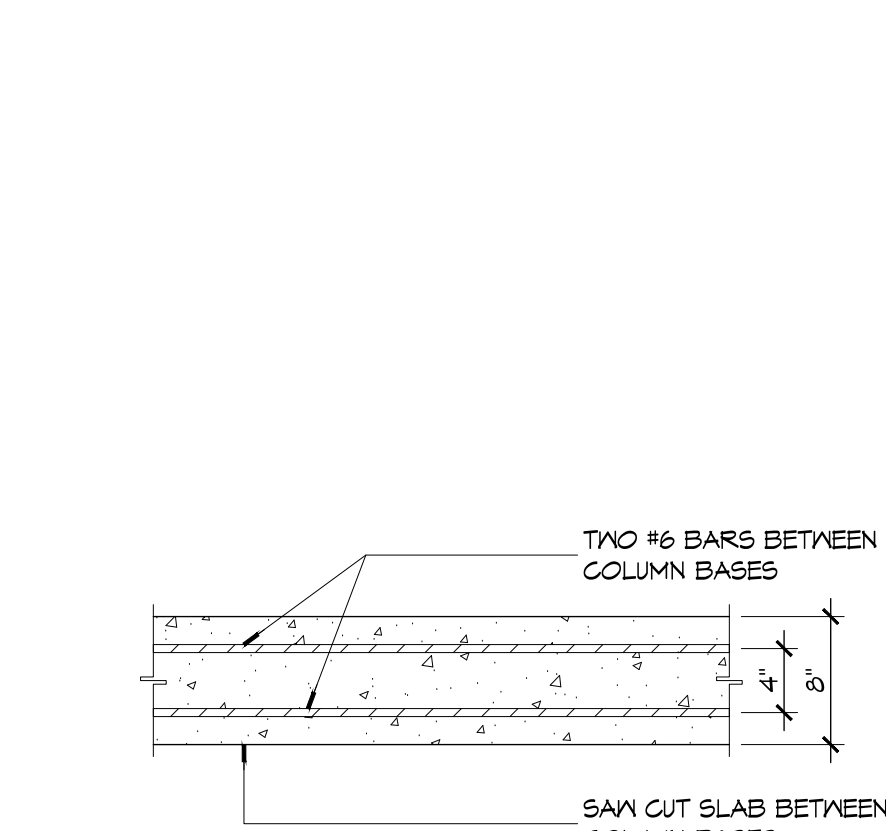
SHEET No: 4 of 7



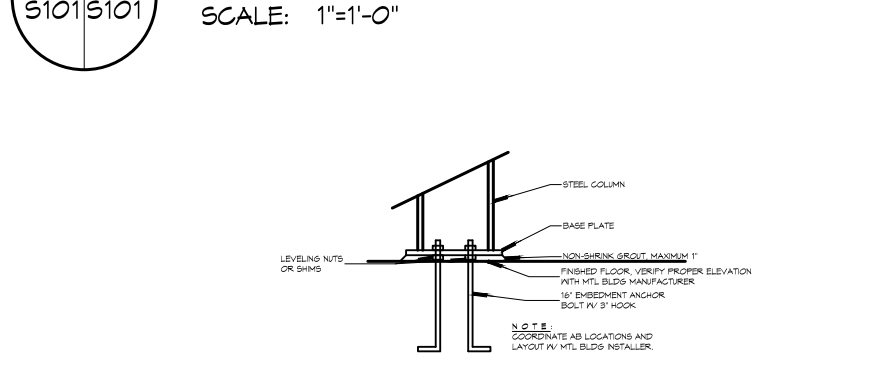
6 DETAIL
SCALE: 1"=1'-0"



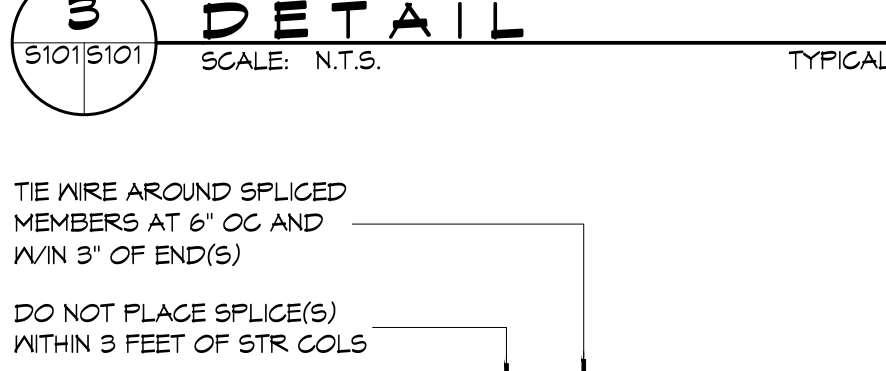
5 DETAIL
SCALE: 1"=1'-0"



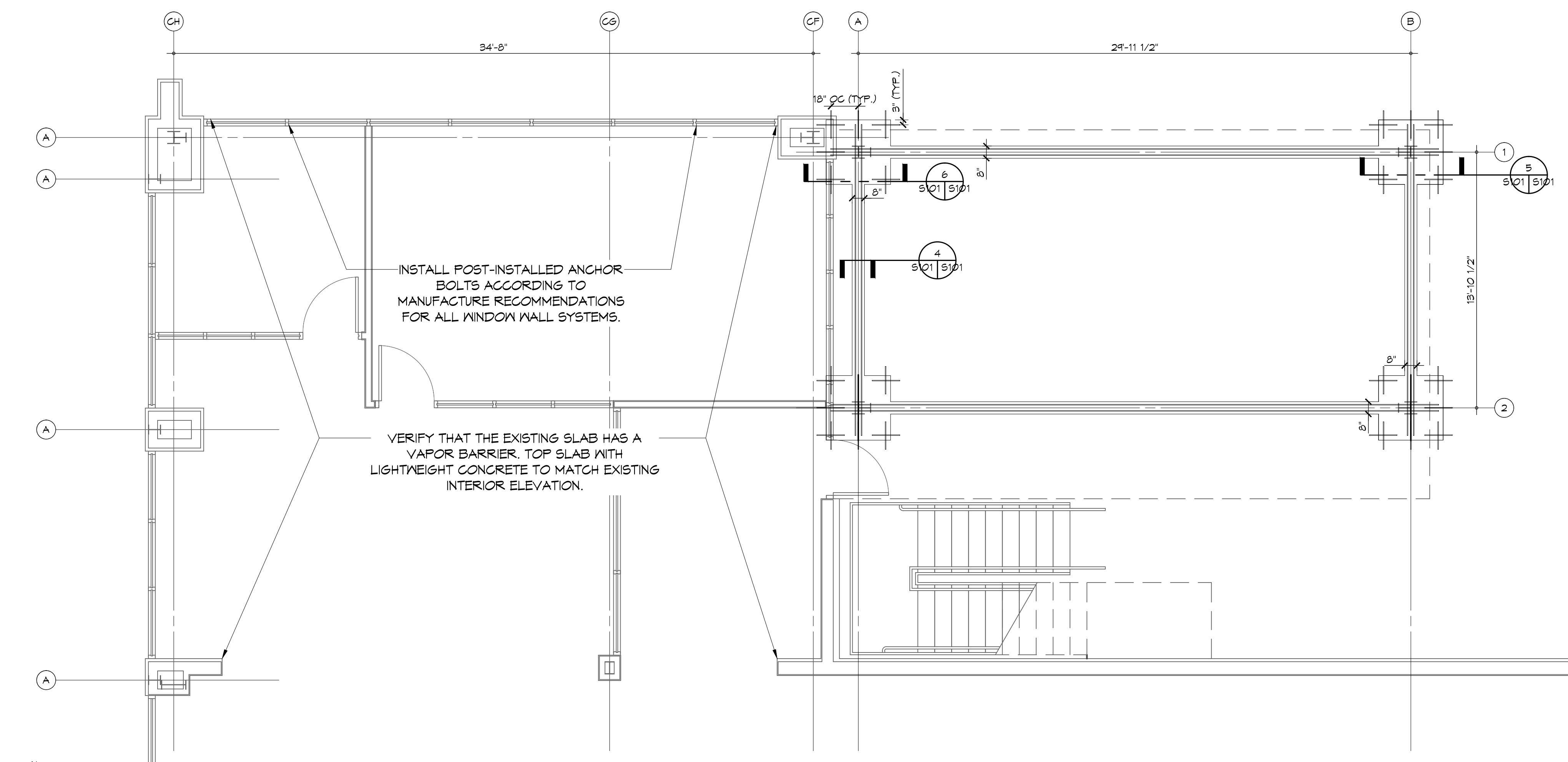
4 DETAIL
SCALE: 1"=1'-0"



3 DETAIL
SCALE: N.T.S. TYPICAL



2 DETAIL
SCALE: N.T.S. TYPICAL



1 FOUNDATION PLAN
SCALE: 1/4" = 1'-0"