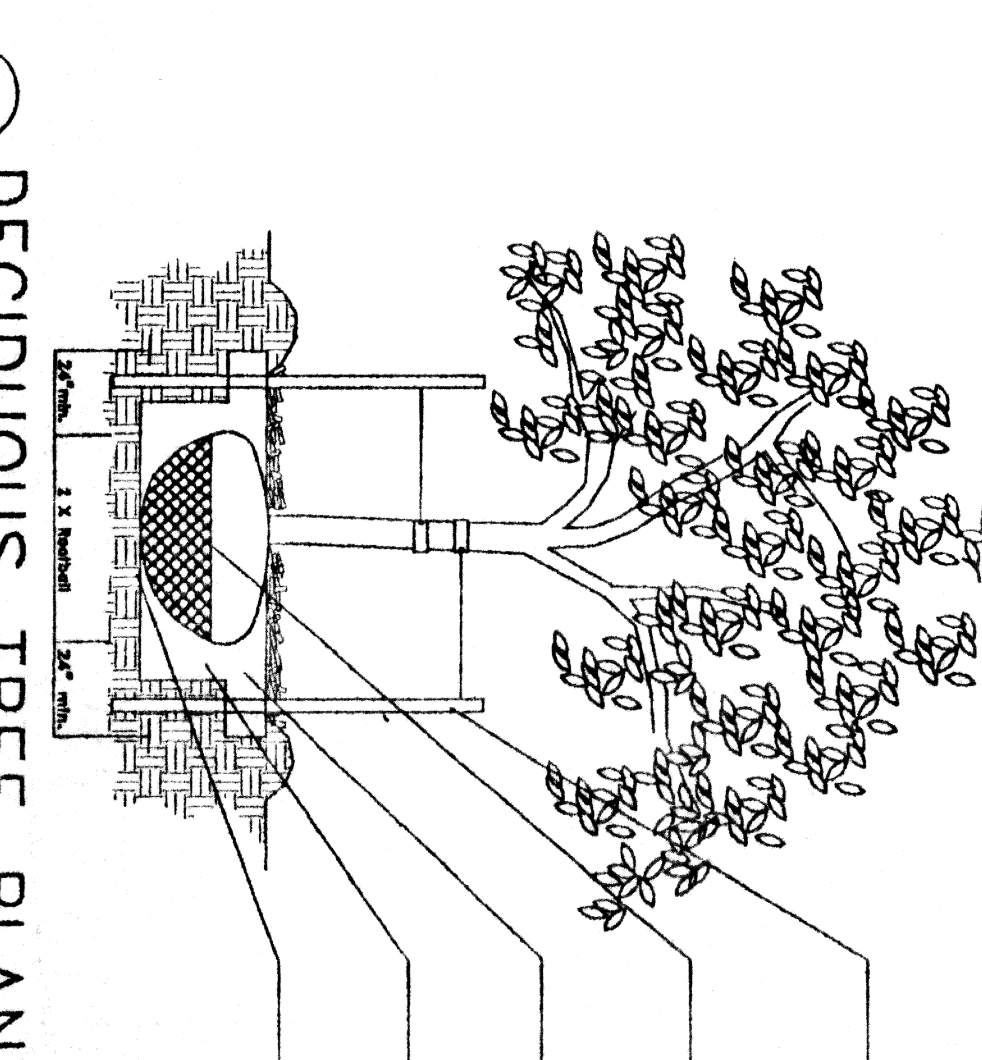
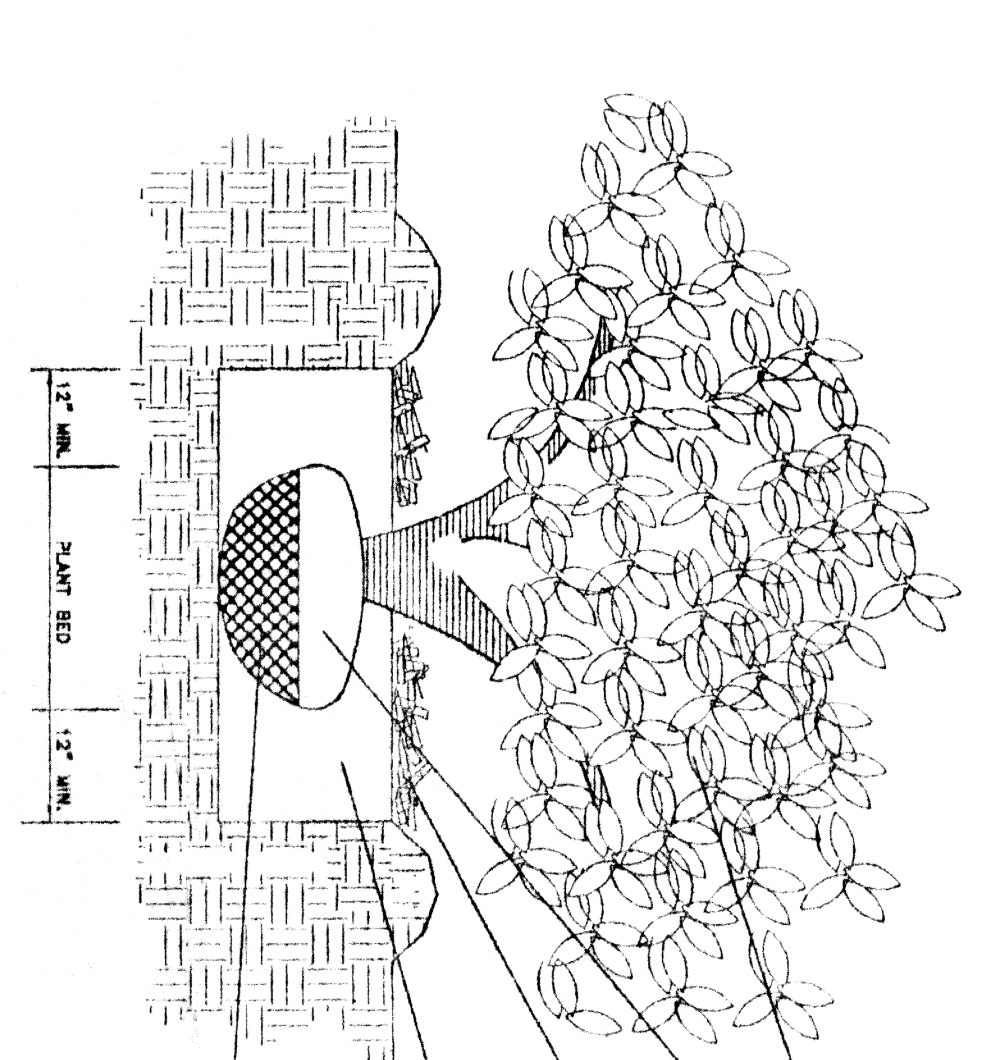


NOTES:
 • DO NOT REMOVE OR CUT LEADER.
 • REMOVE ONLY DEAD OR BROKEN BRANCHES IMMEDIATELY PRIOR TO PLANTING.
 • KEEP ONLY DEAD OR BROKEN BRANCHES IMMEDIATELY PRIOR TO PLANTING.
 • KEEP PLANTS MOIST AND SHADDED UNTIL BEING PLANTED.
 • DO NOT FERTILIZE FOR AT LEAST ONE GROWING SEASON.
 • WATER REGULARLY UNTIL ROOTS ESTABLISH.
 • WATER REGULARLY UNTIL ROOTS ESTABLISH.
 • WATER REGULARLY UNTIL ROOTS ESTABLISH.

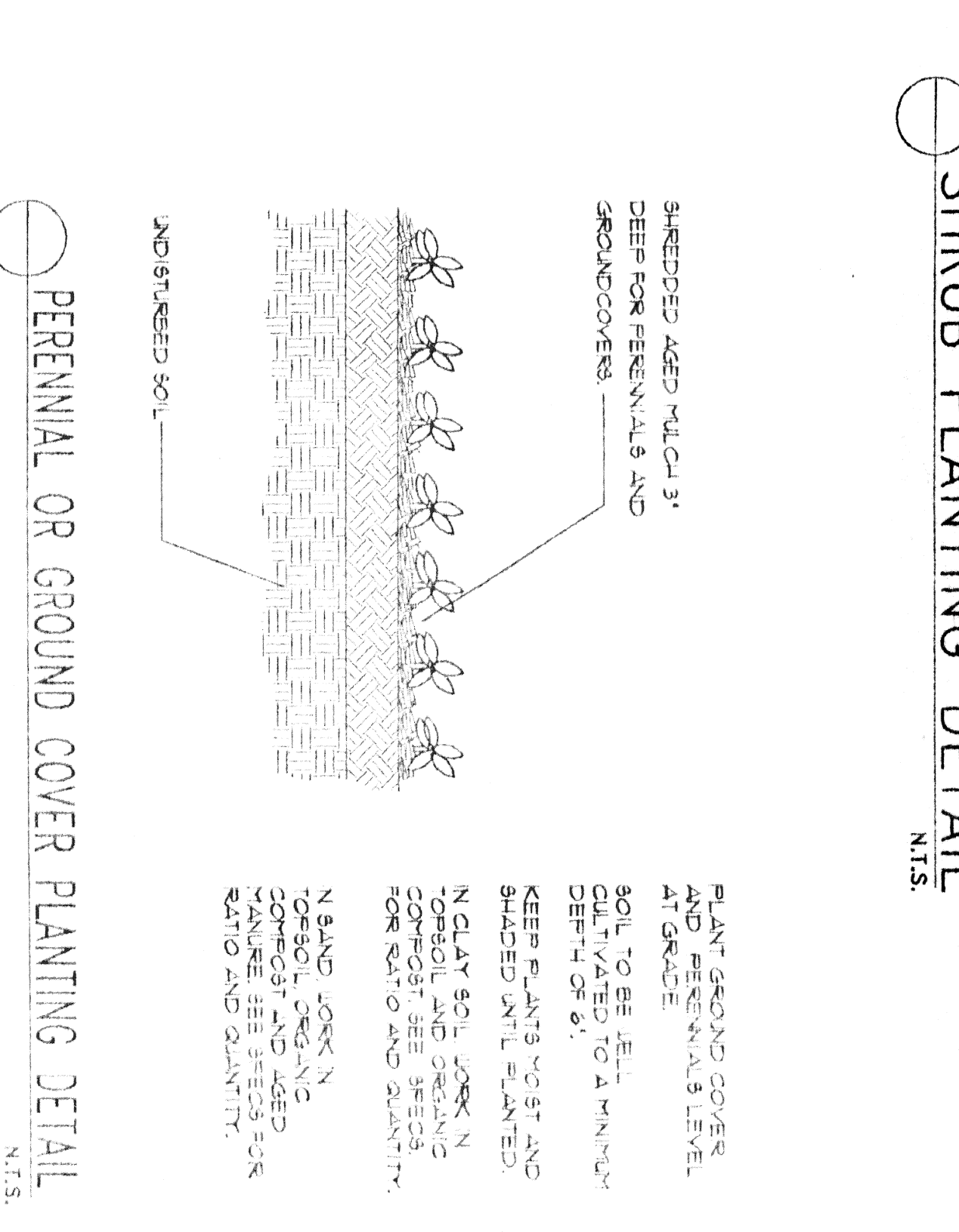


SET TREE SHARP STAKE AND 1/2" 3" CALIBER TREE GUARD WITH 1/2" GAPS BETWEEN AND LEANED SIDES STAKE OVER 3" CALIBER WITH 3" GAPS. USE NYLON STRAP WITH GROUND 3" BELOW FRONT OF TREE TO HOLD GUARD IN PLACE. GUARD SHOULD BE PLACED OVER 3" CALIBER AND SHOULD PROVIDE FLARING TREE 6" DURING SET STAKES IN MINIMUM 18" HIGH SOIL.
 PLANT ROOTBALL 3" - 4" ABOVE FINISH GRADE IN CLAY SOIL AND AT GRADE IN SANDY SOIL.
 4" - 6" SPECIFIED MULCH PROVIDE 3" PLANTING RIM FOR TREES IN DIRT AND PLANTING BED. PROVIDE SLOPER ON DOWNHILL SIDE ON BLOWER NO PLANTING RIM FOR TREES IN REGULAR CONTACT WITH ROAD TRAFFIC.
 CUT AND REMOVE ALL SURF AND USE SLOPER FROM TOP TO 2/3 OF ROOTBALL. REMOVE ALL TIEED GREEN BARK. AFTER TREE IS POSITIONED REMOVE ALL TIEED MORE PLASTIC AND REBERN.
 CUT PLANT SOIL TO DEPTH OF ROOTBALL. THOROUGHLY WATER AND LEANED SOIL TO SOFTEN SIDES OF UNDISTURBED SOIL.
 CUT AND REMOVE ALL SURF AND USE SLOPER FROM TOP TO 2/3 OF ROOTBALL. REMOVE ALL TIEED GREEN BARK. AFTER TREE IS POSITIONED REMOVE ALL TIEED MORE PLASTIC AND REBERN.

NOTES:
 • FERTILIZE ONLY FIELD OR GROUND BEHINDS IMMEDIATELY PRIOR TO PLANTING.
 • KEEP PLANTS MOIST AND SHADDED UNTIL BEING PLANTED.
 • DO NOT FERTILIZE FOR AT LEAST ONE GROWING SEASON.
 • WATER REGULARLY UNTIL ROOTS ESTABLISH.
 • WATER REGULARLY UNTIL ROOTS ESTABLISH.



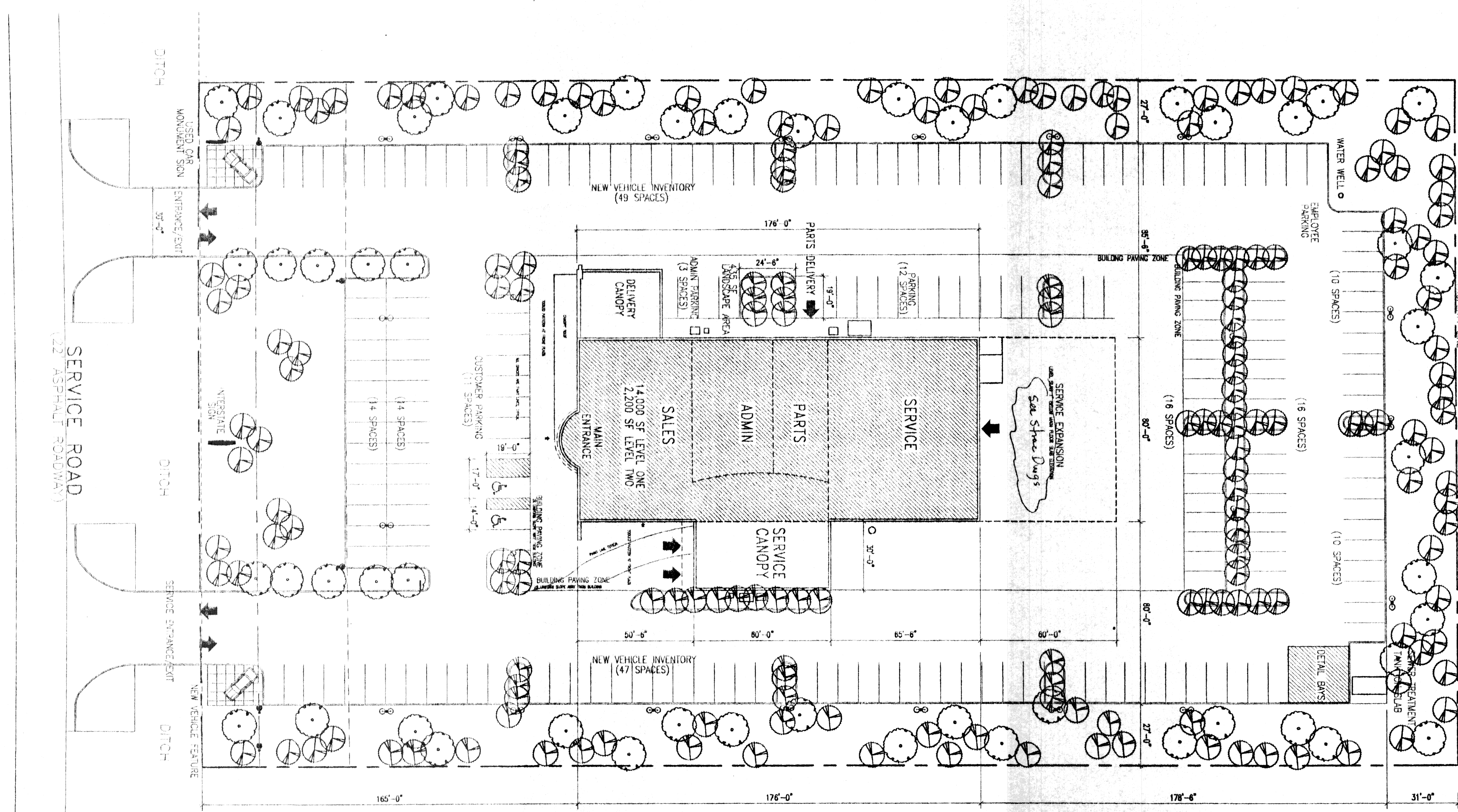
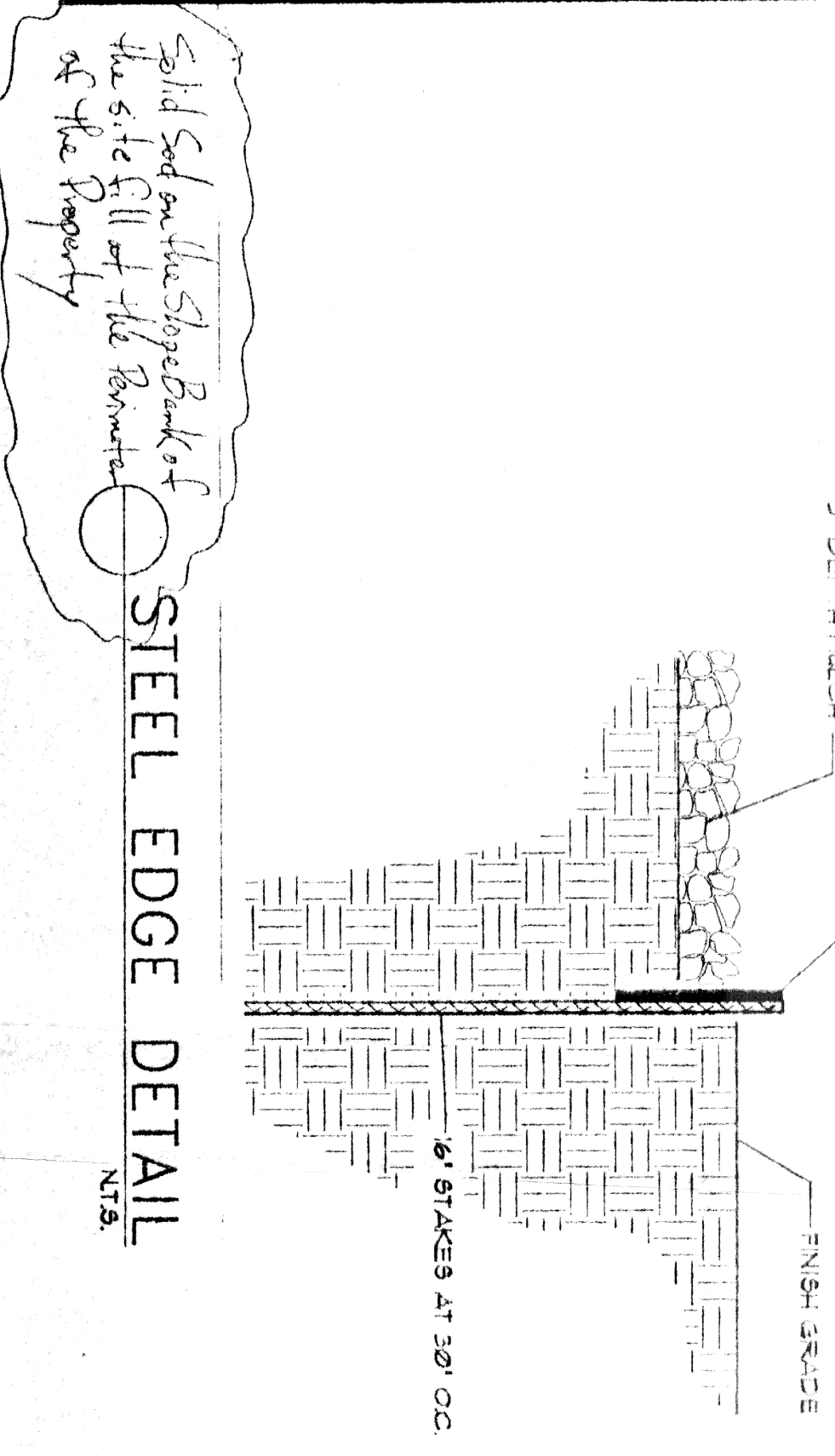
SET BARBER SLOPER AND 3" 3" CALIBER TREE GUARD WITH 1/2" GAPS BETWEEN AND LEANED SIDES STAKE OVER 3" CALIBER WITH 3" GAPS. USE NYLON STRAP WITH GROUND 3" BELOW FRONT OF TREE TO HOLD GUARD IN PLACE. GUARD SHOULD BE PLACED OVER 3" CALIBER AND SHOULD PROVIDE FLARING TREE 6" DURING SET STAKES IN MINIMUM 18" HIGH SOIL.
 PLANT ROOTBALL 3" - 4" ABOVE FINISH GRADE IN CLAY SOIL AND AT GRADE IN SANDY SOIL.
 4" - 6" SPECIFIED MULCH PROVIDE 3" PLANTING RIM FOR TREES IN DIRT AND PLANTING BED. PROVIDE SLOPER ON DOWNHILL SIDE ON BLOWER NO PLANTING RIM FOR TREES IN REGULAR CONTACT WITH ROAD TRAFFIC.
 CUT AND REMOVE ALL SURF AND USE SLOPER FROM TOP TO 2/3 OF ROOTBALL. REMOVE ALL TIEED GREEN BARK. AFTER TREE IS POSITIONED REMOVE ALL TIEED MORE PLASTIC AND REBERN.
 CUT PLANT SOIL TO DEPTH OF ROOTBALL. THOROUGHLY WATER AND LEANED SOIL TO SOFTEN SIDES OF UNDISTURBED SOIL.
 CUT AND REMOVE ALL SURF AND USE SLOPER FROM TOP TO 2/3 OF ROOTBALL. REMOVE ALL TIEED GREEN BARK. AFTER TREE IS POSITIONED REMOVE ALL TIEED MORE PLASTIC AND REBERN.



PLANT GROUND COVER AND PERENNIALS LEVEL AT GRADE.
 SOIL TO BE ELEVATED TO A MINIMUM DEPTH OF 6".
 KEEP PLANTS MOIST AND SHADDED UNTIL PLANTED.
 N. CLAY SOIL, WORK N. GROUND AND GROUND COVER FOR 6" OF SOIL. WATER REGULARLY UNTIL ROOTS ESTABLISH.

LANDSCAPE MATERIALS

SYMBOL	TYPE	QUANTITY	SIZE	NOTES
○	CLASS A TREE	51	3" CAL.	SHADE TREE
○	REYNOLDS PENSTLYANICA 'SUNNIT'			
○	CLASS B TREE	166	3" CAL.	SHADE TREE
○	CLEVEDALE SELECT BEAR			
○	PURBA CALIFORNIA CLEMATIS SELECT			
○	GROUND COTONEASTER	50	5 GAL.	SHRUBS
○	COTONEASTER HORIZONTALIS FERNULUS			
○	POTENTILLA	50	5 GAL.	SHRUBS
○	POTENTILLA FRUTICOSA			
○	BLUE BOY HOLLY	25	5 GAL.	SHRUB
○	LEX X RESERVE/BLUE BOY			
○	FINE RESCUE BOD			



HONDA OF SLIDELL
 NEW FACILITY
 SLIDELL, LA.

THOMAS PARTNERSHIP
 ARCHITECTURE-PLANNING

3000 SOUTH VINE STREET, DENVER, COLORADO 80210 PHONE (303) 569-7504 FAX (303) 691-9790

DATE: 2/12/03
 DRAWN BY: CBT/JW
 SCALE: AS NOTED
 JOB NUMBER: 2002.1
 DRAWING TITLE: LANDSCAPE PLAN

A0.2