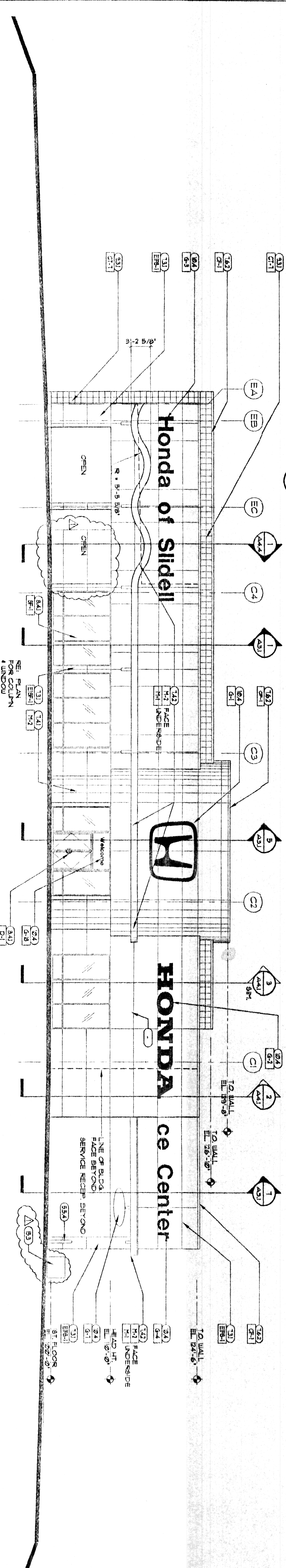
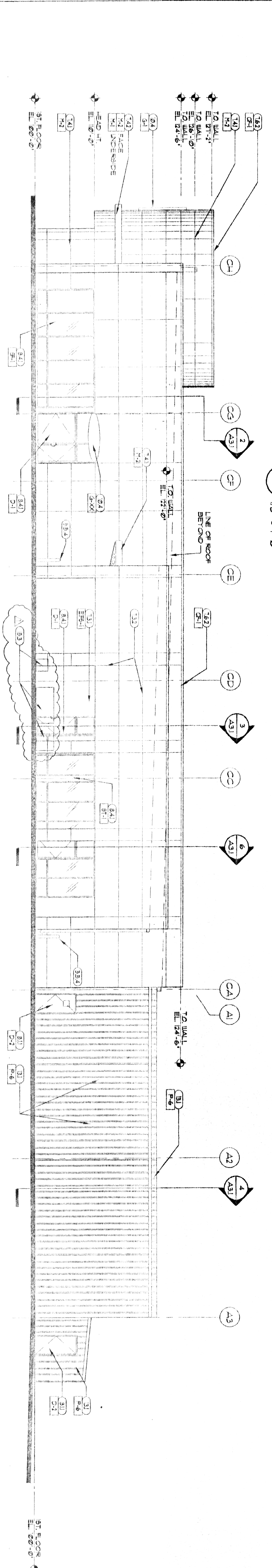


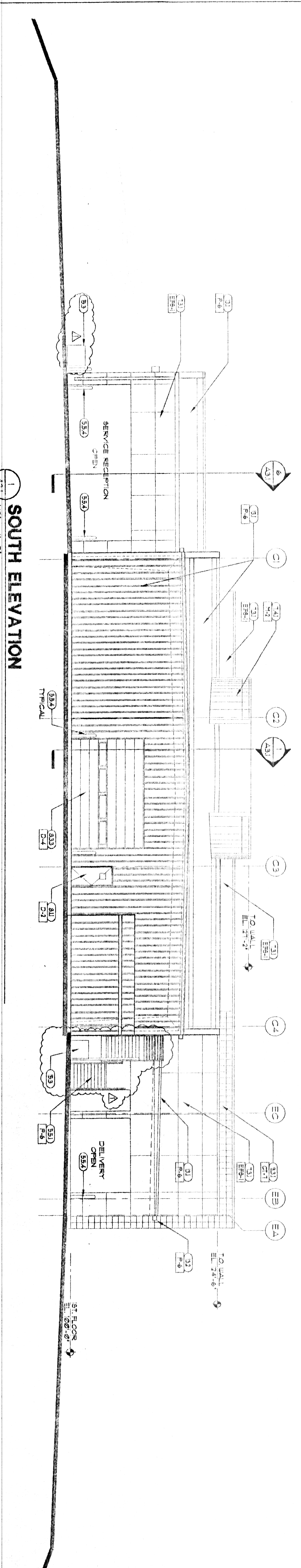
4 EAST ELEVATION
1/8" = 1'-0"



3 NORTH ELEVATION
1/8" = 1'-0"



2 WEST ELEVATION
1/8" = 1'-0"



1 SOUTH ELEVATION
1/8" = 1'-0"

KEYED NOTES

- (21) RE. CIVIL FOR EXTERIOR PAVING
- (22) 1/2" BENT JI.
- (23) CONCRETE FOUNDATION RE. STRUCT.
- (24) CONC. SLAB ON PREPARED GRADE
- (25) CONC. FLOOR ON TIL. DECK
- (26) CHU WALL, RE. STRUCT FOR REIN.
- (27) STEEL BEAM, RE. STRUCT.
- (28) STEEL COLUMN, RE. STRUCT.
- (29) STEEL JOIST, RE. STRUCT.
- (30) STEEL DECK, RE. STRUCT.
- (31) COLD FORMED STEEL FRAMING, RE. STRUCT.
- (32) 9" X 9" SHEATHING
- (33) AIR INSULATION BARRIER
- (34) 1/2" DIA. ST. PIPE QUADRANT/HORIZONTAL
- (35) STEEL STANG
- (36) 6" DIA. PIPE SILL/LAND
- (37) 3/4" EXTERIOR GRADE PLYWOOD
- (38) WOOD BLOCK/SLASH CORN.
- (39) FLOOR LAM. COUNTERTOP
- (40) FLOOR LAM. CABINETS
- (41) WOOD SHELVES
- (42) BATT INSUL. WHERE REQUIRED SEE SECTION
- (43) ACoustICAL BATT INSULATION
- (44) EPSA, TECH. ATTACH.
- (45) EPSA FORMED RE. METAL
- (46) HONDA COLOR COMPOSITE METAL PANELS
- (47) HONDA CANOPY/RAVE
- (48) 24 GA. GALV. SH. TIL. CORING
- (49) BEZELANT JOINT
- (50) HT. DOOR AND FRAME
- (51) 6L WOOD DOOR
- (52) ACCESS PANEL
- (53) COILING FIRE DOOR/1 HR
- (54) OPENED REGIONAL DOOR
- (55) COILING COUNTER SPLITTER
- (56) AND. ALUM. STROEMONT/ENTRANCE WINDOWS
- (57) AND. ALUM. FLASHING/TIGHT TO MATCH STROEMONT SYSTEM
- (58) 1" LOUVE GLAZING
- (59) W/ CLEAR GLAZING
- (60) METAL STUD PARTITION OR FERRING RE. GRID
- (61) SLIP JOINT
- (62) 6MM. GYP. BD. CEILING
- (63) 5/8" GYP. BD. TYPE XI
- (64) 5/8" GYP. BOARD
- (65) CERAMIC TILE
- (66) PORCELAIN TILE
- (67) ACoustICAL PANEL CEILING (GATCO)
- (68) RE. LANT. TILE FLOORING
- (69) RE. LANT. BASE
- (70) CARPET
- (71) PAINT
- (72) EPOXY PAINT
- (73) FIBERGLASS PANEL (FAP)
- (74) VINYL WALL COVERING (VWC)
- (75) TOILET COMPARTMENT
- (76) SINK
- (77) SINK
- (78) LOCKERS
- (79) FINE EXTINGUISHER
- (80) TOILET ACCESSORIES RE. SINKS
- (81) EQUIPMENT BY OWNER
- (82) 8" X 8" SQUARE ST. COINERS RE. CONC. INSULATION
- (83) METAL BUILDING SYSTEM
- (84) GUTTER
- (85) FLASHING
- (86) RE. MECH. FOR PLUMBING FIXTURES
- (87) RE. MECH. FOR HVAC
- (88) RE. ELEC. FOR LIGHTING

THOMAS PARTNERSHIP
ARCHITECTURE-PLANNING

3000 SOUTH VINE STREET, DENVER, COLORADO 80210 PHONE (303) 589-7504 FAX (303) 691-9790

HONDA OF SLIDELL
NEW FACILITY
SLIDELL, LA.

RESUBMITTAL 3/10/03
DATE: 2/5/03
DRAWN BY: CBT/JW/WH
SCALE: AS NOTED
JOB NUMBER: 2002.1
DRAWING TITLE: BLDG. ELEVATIONS

A2.1