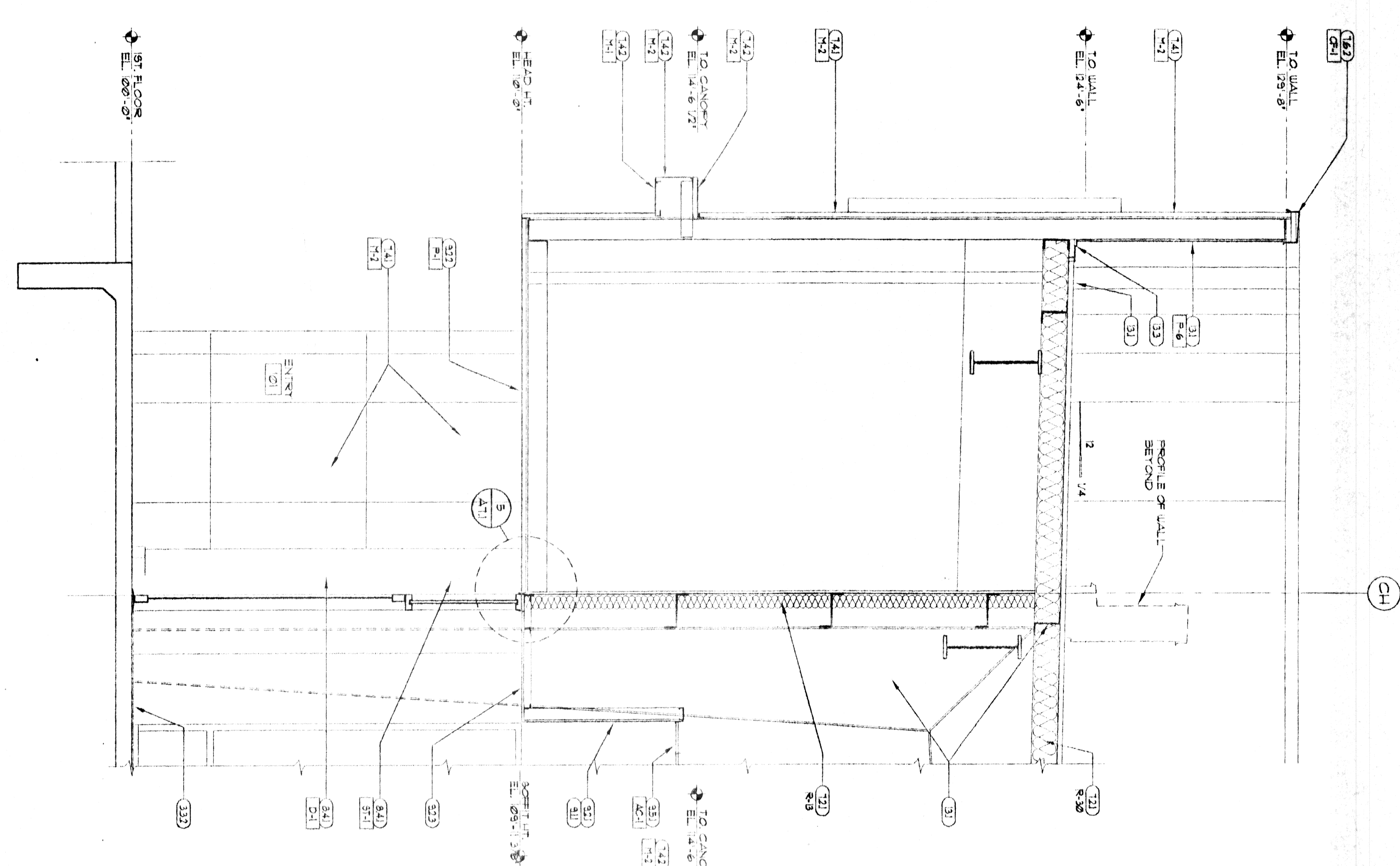
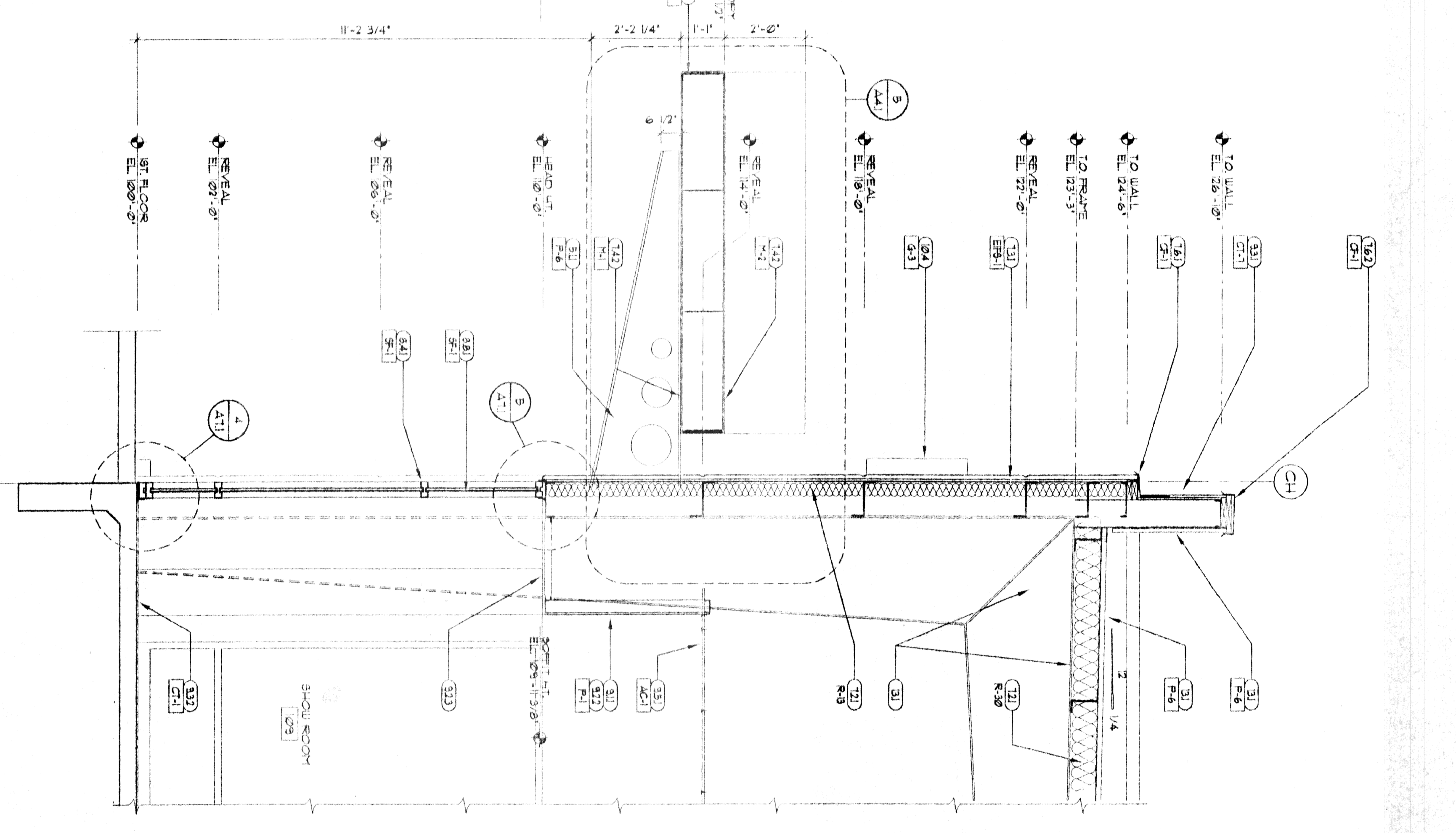


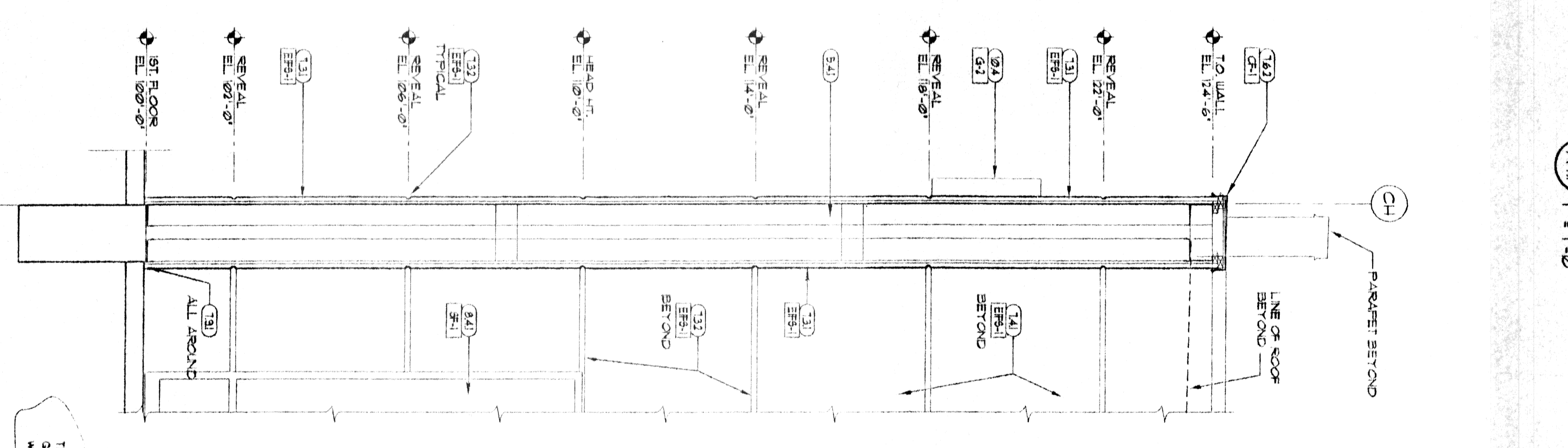
5 CANOPY SECTION
A4.1 1/2" = 1'-0"



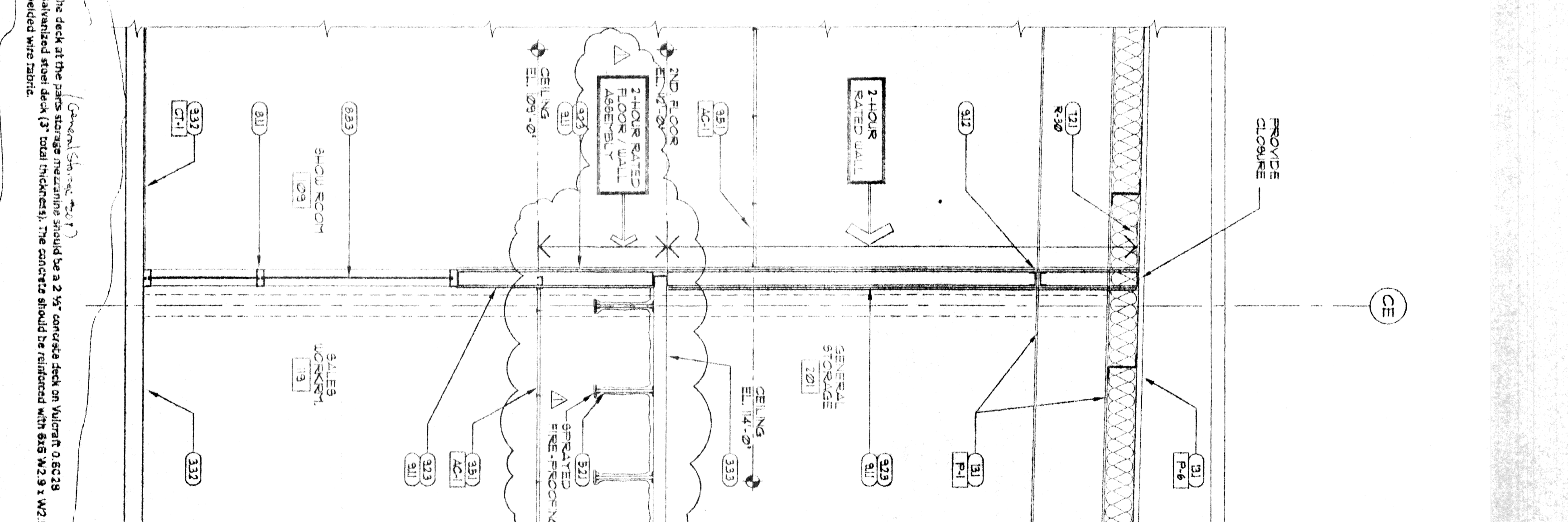
4 WALL SECTION
A4.1 1/2" = 1'-0"



3 WALL SECTION
A4.1 1/2" = 1'-0"



2 WALL SECTION
A4.1 1/2" = 1'-0"



1 ENTRY SECTION
A4.1 1/2" = 1'-0"

- KEYED NOTES**
- (2.1) RE: CIVIL FOR EXTERIOR FINISH
 - (2.11) 1/2" DWP J/I
 - (3.1) CONCRETE FOUNDATION RE: STRUCT.
 - (3.11) CONC. SLAB ON PREPARED GRADE
 - (3.12) CONC. FLOOR ON INTL. DECK
 - (3.13) CH WALL RE: STRUCT. FOR REIN.
 - (3.14) STEEL BEAM RE: STRUCT.
 - (3.15) STEEL COLUMN RE: STRUCT.
 - (3.16) STEEL JOIST RE: STRUCT.
 - (3.17) STEEL DECK RE: STRUCT.
 - (3.18) COLD FORMED STEEL FRAMING RE: STRUCT.
 - (3.19) 5/8" GYP SEALING
 - (3.2) AIR INFILTRATION BARRIER
 - (3.21) STEEL STAIRS
 - (3.22) 1/2" DIA. 3/4" PIPE GUARDRAIL/LANDFILL
 - (3.23) 6" DIA. PIPE SOLLARD
 - (3.24) 3/4" EXTERIOR GRADE FL. WOOD
 - (3.25) WOOD BLOCK/DRAGON COPR.
 - (3.26) FLOOR LAM. CABINETS
 - (3.27) WOOD SHELVES
 - (3.28) PART WALL LINER REQUIRED, SEE SECTION
 - (3.29) ACoustICAL BATT INSULATION
 - (3.3) EIFS MECH. ATTACH
 - (3.31) EIFS FORMED REVEAL
 - (3.32) HONDA COLOR CORP. METAL PANELS
 - (3.33) HONDA CANOPY LAVER
 - (3.34) 3/4" GALV. BUR. INTL. CORING
 - (3.35) SEALANT JOINT
 - (3.36) INT. DOOR AND FLARE
 - (3.37) 6" L. WOOD DOOR
 - (3.38) ACCESS PANEL
 - (3.39) COLLING FINE DOOR LINER
 - (3.4) OVERHEAD SECTIONAL DOOR
 - (3.41) COLLING COUNTER SHUTTER
 - (3.42) AND ALUM. STOREFRONT/ ENTRANCE/ WINDOUB
 - (3.43) AND ALUM. FLASHING/ W/INT TO HATCH
 - (3.44) 1" LOW E. GLAZING
 - (3.45) 1/4" CLEAR GLAZING
 - (3.46) METAL GRID PARTITION OR BUREAU RE: SOED
 - (3.47) SLP JOINT
 - (3.48) 8/8" GYP. BO. CEILING
 - (3.49) 5/8" GYP. BO. TYPE 'X'
 - (3.5) 5/8" GYP. BO. SOFT BO.
 - (3.51) CERAMIC TILE
 - (3.52) PORCELAIN TILE
 - (3.53) ACoustICAL PANEL CEILING (AATCO)
 - (3.54) RESIDENT TILE FLOORING
 - (3.55) RESIDENT BASE
 - (3.56) CARPET
 - (3.57) EXPOXY PAINT
 - (3.58) FIBERGLASS PANEL (RECY)
 - (3.59) VANT. WALL COVERING (VAC)
 - (3.6) TOILET COMPARTMENT
 - (3.61) BOWKNE BY OWNER
 - (3.62) SHW
 - (3.63) LOCKERS
 - (3.64) FIRE EXTINGUISHER
 - (3.65) TOILET ACCESSORIES
 - (3.66) RE: BO-ED
 - (3.67) EQUIP. BY OWNER
 - (3.68) 3/8" B. SQUARE BY OTHERS
 - (3.69) 4" CONC. INFILTRATION
 - (3.7) METAL BUILDING SYSTEM
 - (3.71) GUTTER
 - (3.72) FLASHING
 - (3.73) RE: MECH FOR PUMPING EXHAUSTS
 - (3.74) RE: MECH FOR HVAC
 - (3.75) RE: ELEC FOR LIGHTING

NOTE: REFER TO STRUCTURAL DRAWINGS FOR ALL FOUNDATIONS

RESUBMITTAL 3/10/03
DATE: 2/12/03
DRAWN BY: GBT/LW/WH
SCALE: AS NOTED
JOB NUMBER: 2002.1
DRAWING TITLE: WALL SECTIONS

HONDA OF SLIDELL
NEW FACILITY
SLIDELL, LA.

THOMAS PARTNERSHIP
ARCHITECTURE-PLANNING
3000 SOUTH VINE STREET, DENVER, COLORADO 80210 PHONE (303) 589-7504 FAX (303) 691-9790

A4.1