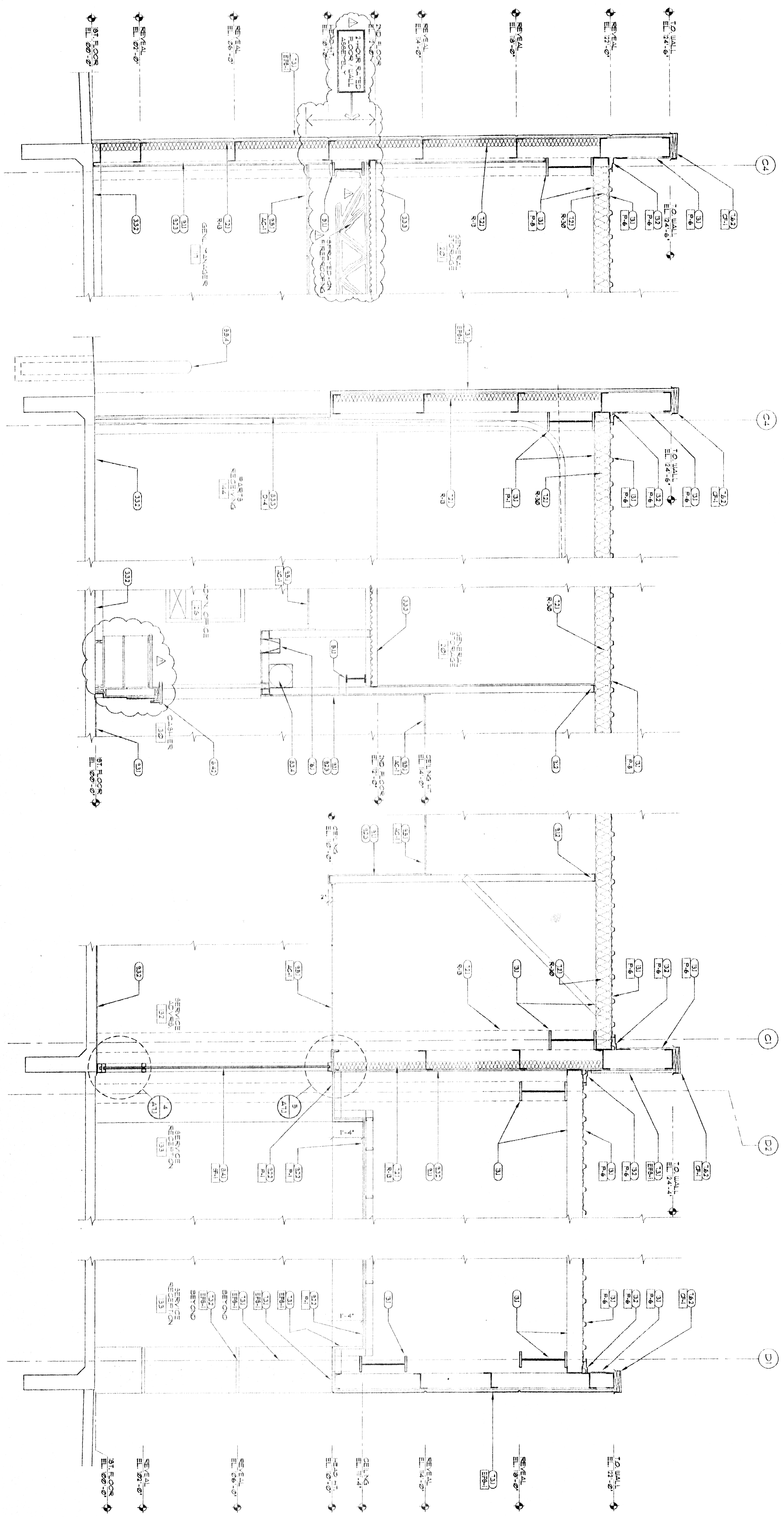


**KEYED NOTES**

- (31) RE: CIVIL FOR EXTERIOR PAVING
- (31) 1/2" DIA. JT.
- (333) CONCRETE FOUNDATION RE: STRUCT.
- (333) CONC. SLAB ON PREPARED GRADE
- (333) CONC. FLOOR ON VTL DECK
- (333) 1/2" WALL RE: STRUCT FOR REIN.
- (31) STEEL BEAM RE: STRUCT.
- (31) STEEL COLUMN RE: STRUCT.
- (31) STEEL JOIST RE: STRUCT.
- (31) STEEL DECK RE: STRUCT.
- (31) COLD-FORMED STEEL FRAMING RE: STRUCT.
- (31) 3/8" GYP SHEATHING
- (31) AIR INFLATION BARRIER
- (31) STEEL STAIRS
- (31) 1/2" DIA. ST. PIPE (ALUMINUM HANDRAIL)
- (31) 6" DIA. PIPE SILL AND
- (31) 3/4" EXTENSION GRADE PL. WOOD
- (31) WOOD BLOCKING-NON COMB.
- (31) PL. LAM. COMPART
- (31) PL. LAM. CABINETS
- (31) WOOD SHELVES
- (31) PART WALL WHERE REQUIRED. SEE SECTIONS
- (32) ACoustICAL PAINT INSULATION
- (31) EPS. TECH. ATTACH
- (33) EPS. TOWERED REVEAL
- (31) HONDA COLOR COMPOSITE METAL PANEL
- (31) HONDA CONCRETE W/VE
- (31) 3/4" GALV. SH. HTL. CORNG
- (31) SEALANT JOINT
- (31) HT. DOOR AND FRAME
- (31) AC. WOOD DOOR
- (31) ACCESS PANEL
- (31) COLLING FINE DOOR LK. R
- (31) OVERHEAD SECTIONAL DOOR
- (31) COLLING COUNTER SHUTTER
- (31) APOD. ALUM. STRENGTHEN/ INTRUSION W/INDOOR
- (31) APOD. ALUM. FLASHING/HT. TO MATCH STRENGTHEN. 8" X 8"
- (31) 1" LOM. F. GLAZING
- (31) 1/4" CLEAR GLAZING
- (31) VERTICAL STUD PARTITION OR PARTING BOARD
- (31) SLIP JOINT
- (31) SHIP GYP. BD. CEILING
- (31) 5/8" GYP. BO. TYPE X.
- (31) 5/8" GYP. BO. SOFT BD.
- (31) CERAMIC TILE
- (31) POWDER-LIN TILE
- (31) ACoustICAL PANEL CEILING (9A12)
- (31) RESILIENT TILE FLOORING
- (31) RESILIENT BASE
- (31) CARPET
- (31) PAINT
- (31) ENVOY PAINT
- (31) FERRULOUS PANEL (REQ)
- (31) VINYL WALL COVERING (VWC)
- (31) TOILET COMPARTMENT
- (31) SIGNAGE BY OWNER
- (31) SIGN
- (31) LOCKERS
- (31) FINE EXHAUSTER
- (31) TOILET ACCESSORIES
- (31) RE: SCHED.
- (31) EQUIPMENT BY OWNER
- (31) VTY. SERVICES BY OTHERS (SEE COND. INSULATION)
- (31) VERTICAL BUILDING SYSTEM
- (31) DIFFER
- (31) FLASHING
- (31) RE: MECH. FOR PLUMBING FIXTURES
- (31) RE: MECH. FOR HVAC
- (31) RE: ELEC. FOR LIGHTING

NOTE: REFER TO STRUCTURAL DRAWINGS FOR ALL FOUNDATIONS



5 WALL SECTION  
A4.3 1/2" = 1'-0"

4 WALL SECTION  
A4.3 1/2" = 1'-0"

3 WALL SECTION  
A4.3 1/2" = 1'-0"

2 WALL SECTION  
A4.3 1/2" = 1'-0"

1 WALL SECTION  
A4.3 1/2" = 1'-0"

**THOMAS PARTNERSHIP**  
ARCHITECTURE-PLANNING

3000 SOUTH VINE STREET, DENVER, COLORADO 80210 PHONE (303) 589-7504 FAX (303) 691-9790

HONDA OF SLIDELL  
NEW FACILITY  
SLIDELL, IA.

RESUBMITTAL 3/10/03  
DATE: 2/12/03  
DRAWN BY: CBT/JW/VNH  
SCALE: AS NOTED  
JOB NUMBER: 2002.1  
DRAWING TITLE: WALL SECTIONS

**A4.3**