

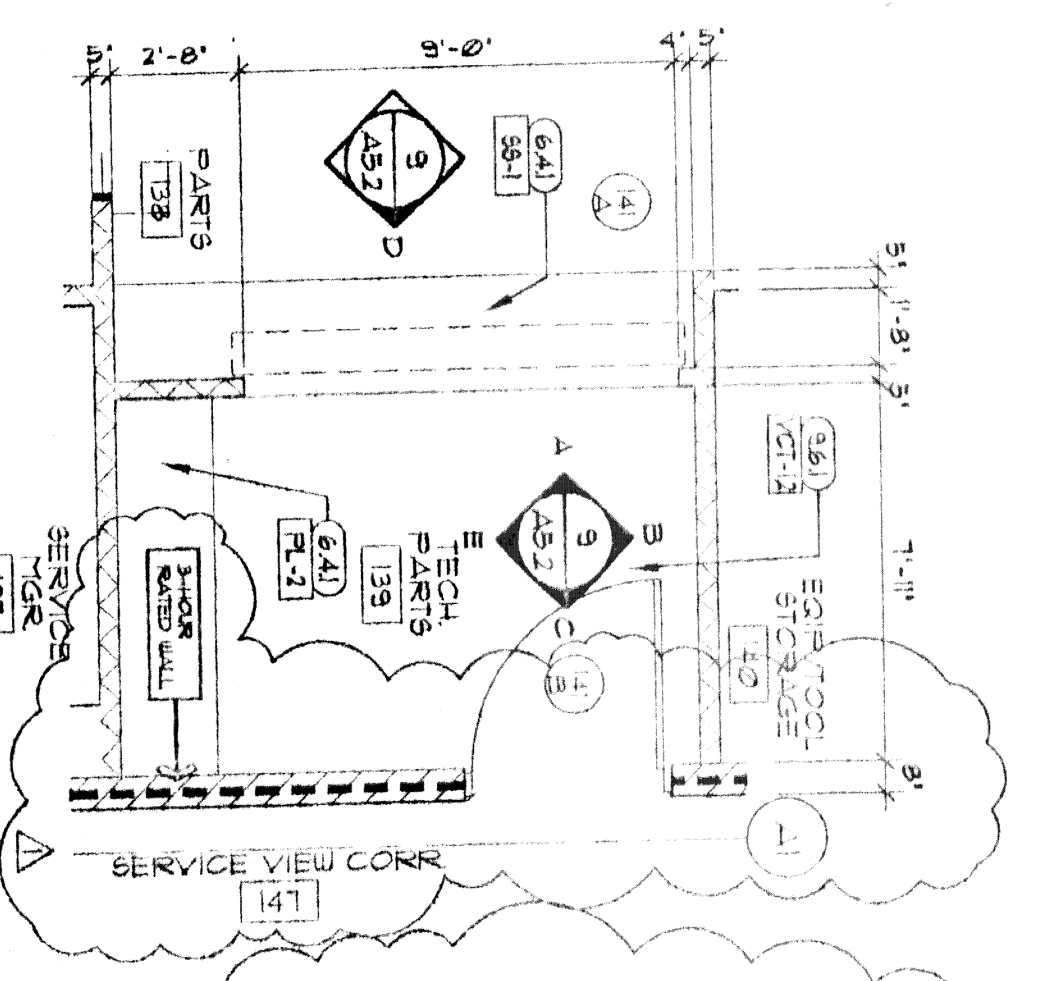
1 UPPER LVL. STAIR - RM. 150
1/4" = 1'-0"

6 BREAK RM. & STAIR - RMS. 122, 150
1/4" = 1'-0"

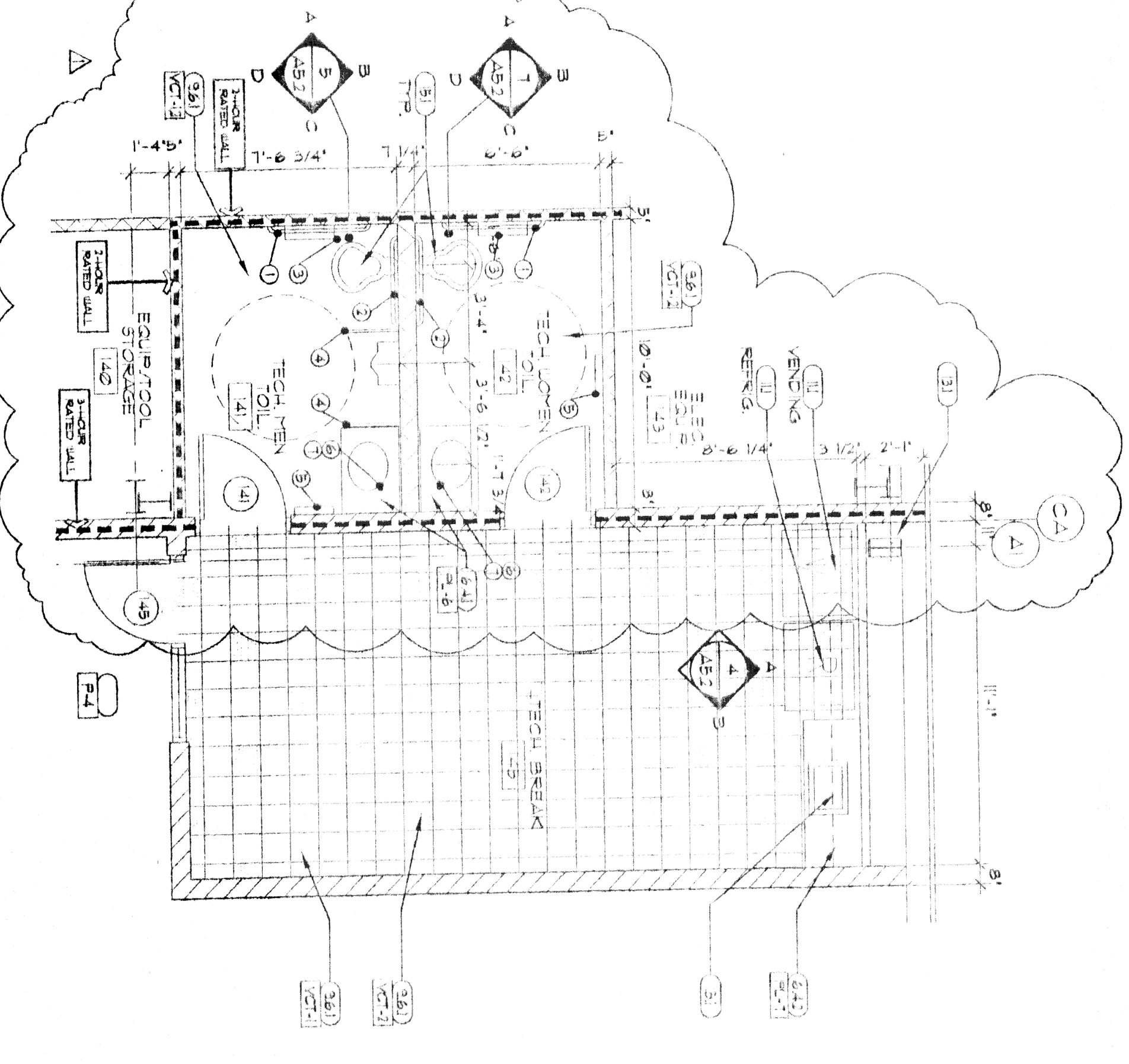
5 STAIR SECTION
3/8" = 1'-0"

TOILET ACCESSORY LIST - 10800

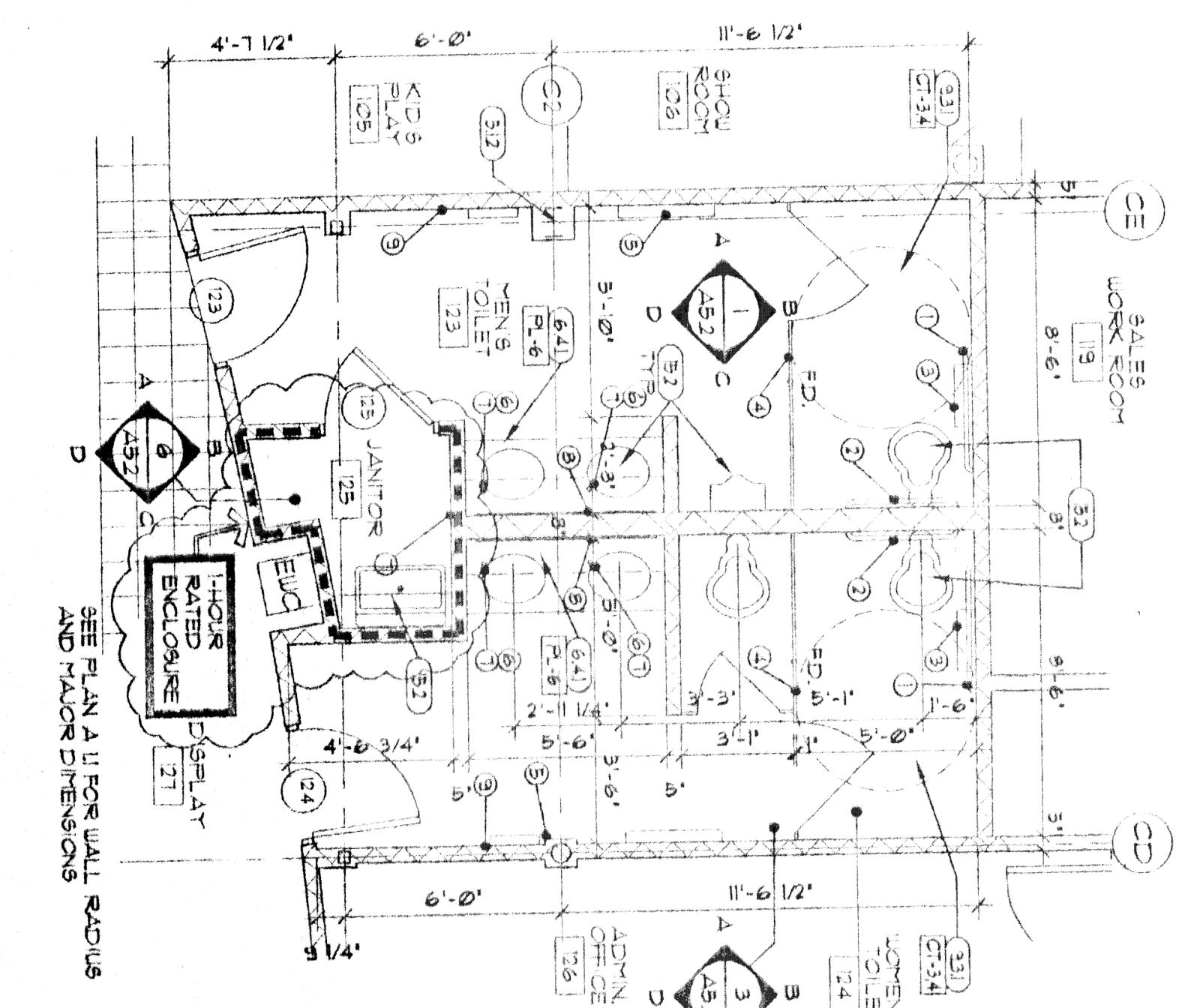
1. 4" NON GLASS BAR
2. 4" NON GLASS BRACKET
3. 4" NON GLASS BRACKET
4. TOILET PARTITION
5. PAPER TOWEL DISPENSER
6. HAND SANITATION
7. MIRROR
8. MIRROR
9. MIRROR
10. MIRROR



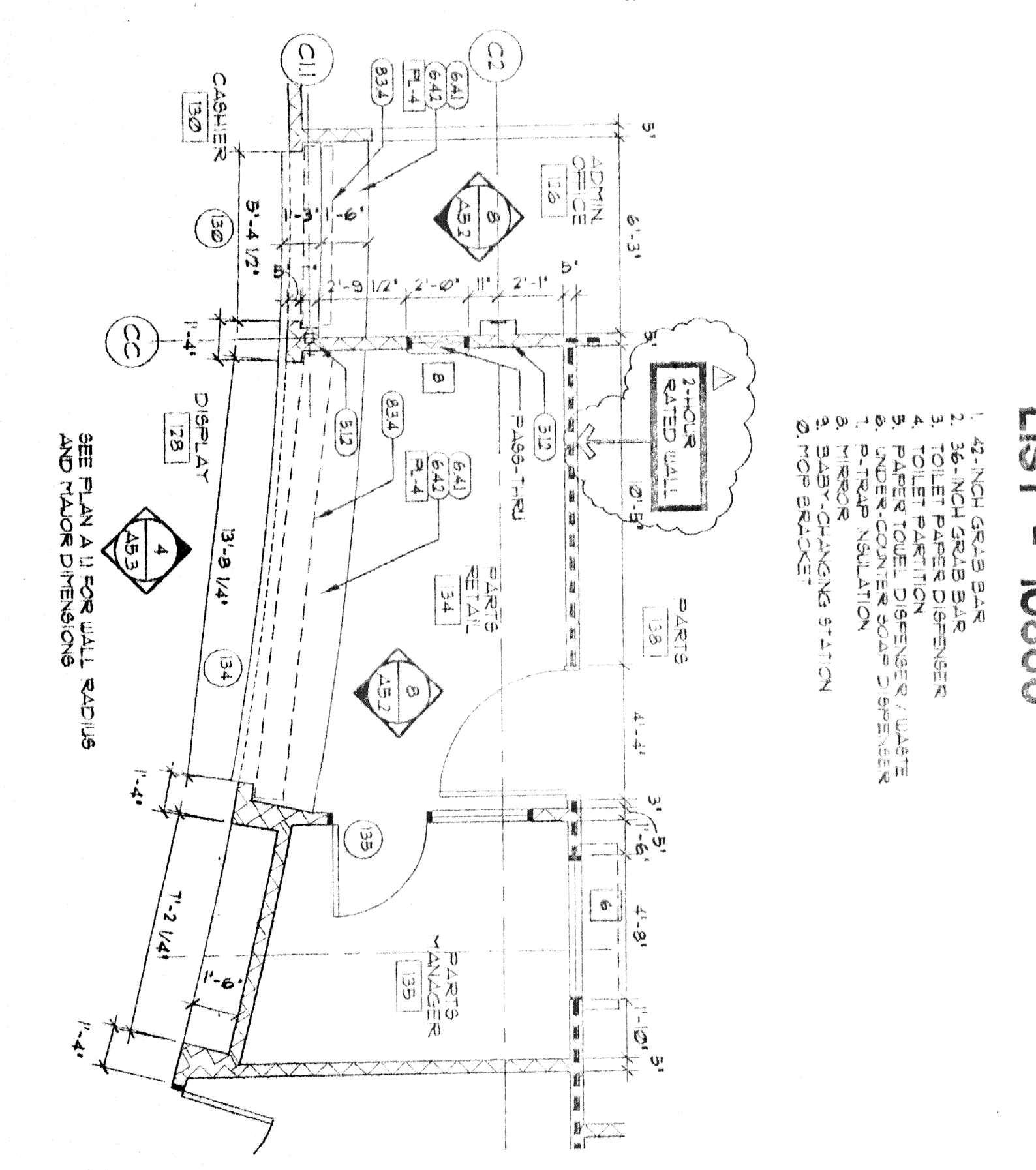
4 TECH. PARTS - RM. 139
1/4" = 1'-0"



3 TECH. BREAK/TOILETS - RMS. 141, 142, 145
1/4" = 1'-0"



2 PUBLIC TOILETS - RMS. 123, 124
1/4" = 1'-0"



1 CASHIER/RETAIL PARTS - RMS. 130, 135
1/4" = 1'-0"

KEYED NOTES

- (21) REB. CIVIL FOR EXTERIOR PAVING
- (213) 1/2" EXP. JT.
- (333) CONCRETE FOUNDATION REB. STRUCT.
- (333) CONC. SLAB ON PRECAST GRADE
- (333) CONC. FLOOR ON HLL. DECK
- (42) CHU WALL REB. STRUCT FOR REIN.
- (312) STEEL COLUMN REB. STRUCT.
- (312) STEEL BEAM REB. STRUCT.
- (312) STEEL JOIST REB. STRUCT.
- (333) STEEL DECK REB. STRUCT.
- (333) COLD FORMED STEEL PAVING REB. STRUCT.
- (522) 5/8" GPM SHEATHING
- (523) AIR INFILTRATION BARRIER
- (531) STEEL STAMPS
- (532) 1/2" DRIFT PIN, FIRE BRACKET, MINOR WALL
- (611) 6" DIA. FIRE BOLLARD
- (613) WOOD BLOOD-CURATION CORER
- (622) PLAS. LAM. COUNTERTOP
- (623) PLAS. LAM. CABINETS
- (623) WOOD SHELVES
- (713) BATT INSUL. UNLESS REQUIRED, SEE SECTIONS
- (733) ACoustICAL BATT INSULATION
- (733) EIPA. HEADC. ATTACH
- (733) HONDA COLOR COMPOSITE METAL PANELS
- (743) HONDA CANTY/ LAME
- (762) 3/4" GAL. SALT. SHT. TYP. CORRUG.
- (783) BEALANT JOINT
- (811) HLT. DOOR AND FRAME
- (811) 6C WOOD DOOR
- (832) ACCESS PANEL
- (832) COLLING FINE DOOR-LHR
- (832) OVERHEAD SECTIONAL DOOR
- (832) COLLING CENTER SHUTTER
- (832) ANOD. ALUM. STROGEMONT/ SHIMAWAY/UNICO
- (832) ANOD. ALUM. STROGEMONT TO MATCH STROGEMONT FINISH
- (832) 1" LOW E. GLAZING
- (832) 1/4" CLEAR GLAZING
- (832) METAL GRID PARTITION OR FARRING REB. SCED
- (832) SLIP JOINT
- (832) 6MM GYP. BD. CEILING
- (832) 5/8" GYP. BD. THE. X1
- (832) 5/8" GYP. SOFT. BD.
- (832) CERAMIC TILE
- (832) PORCELAIN TILE
- (832) ACoustICAL PANEL, CEILING (A2Z)
- (832) REB. INT. TILE FLOORING
- (832) REB. INT. BASE
- (832) CARPET
- (832) PAINT
- (832) SPORT PAINT
- (832) FIBERGLASS PANEL, (FR9)
- (832) VINYL WALL COVERING (VAC)
- (832) TOILET COMPARTMENT
- (832) 6" X 4" SQUARE BY OWNER
- (832) 6" X 4" SQUARE
- (832) LOCKERS
- (832) FIRE EXTINGUISHER
- (832) TOILET ACCESSORIES REB. SCED
- (832) EQUIPMENT BY OWNER
- (832) 5/8" SQUARE BY OWNER
- (832) 6" X 6" CORRUG. NB. ALLIATION
- (832) VERTICAL BUILDING SYSTEM
- (832) GUTTER
- (832) FLASHING
- (832) REB. MECH. FOR SLIPING FIXTURES
- (832) REB. MECH. FOR HVAC
- (832) REB. ELEC. FOR LIGHTING

THOMAS PARTNERSHIP
ARCHITECTURE-PLANNING

3000 SOUTH VINE STREET, DENVER, COLORADO 80210 PHONE (303) 589-7504 FAX (303) 691-9790

HONDA OF SLIDELL
NEW FACILITY
SLIDELL, LA.

RESUBMITTAL 3/10/03
DATE: 2/12/03
DRAWN BY: CBH/JWH
SCALE: AS NOTED
JOB NUMBER: 20021
DRAWING TITLE: ENLARGED PLANS, SECTIONS

A5.1