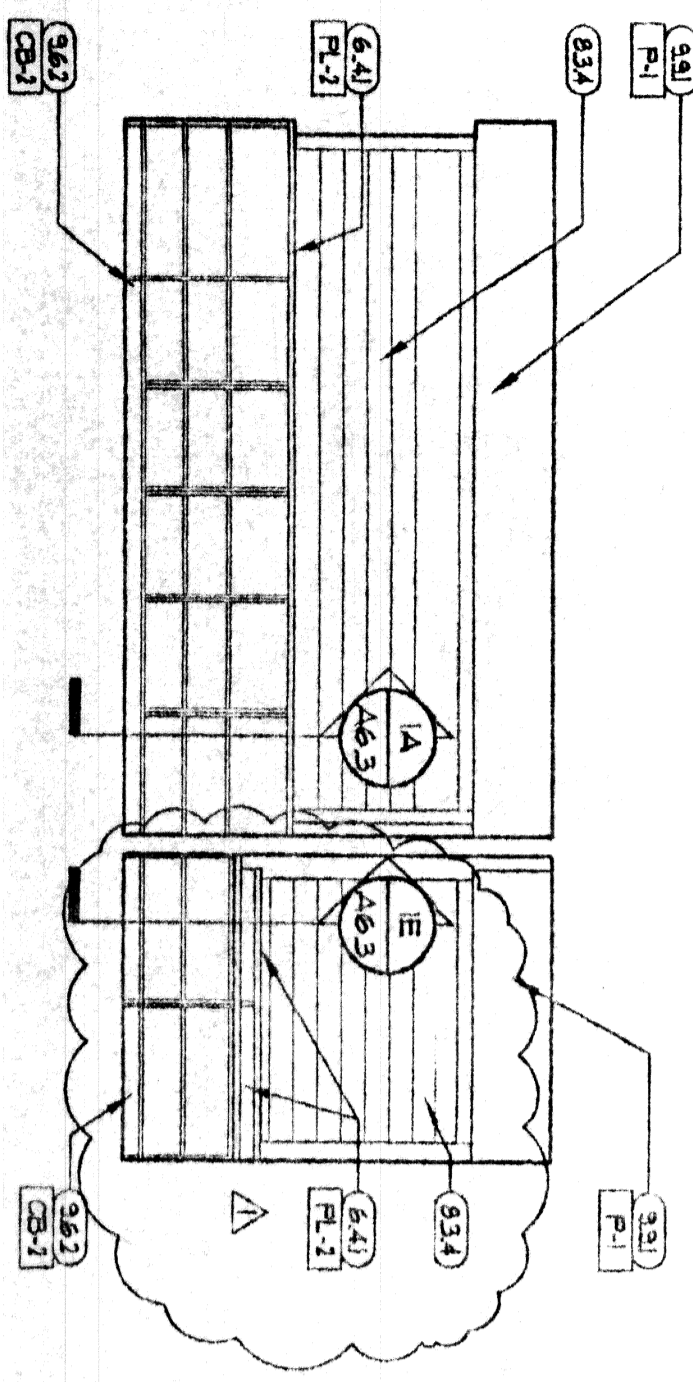
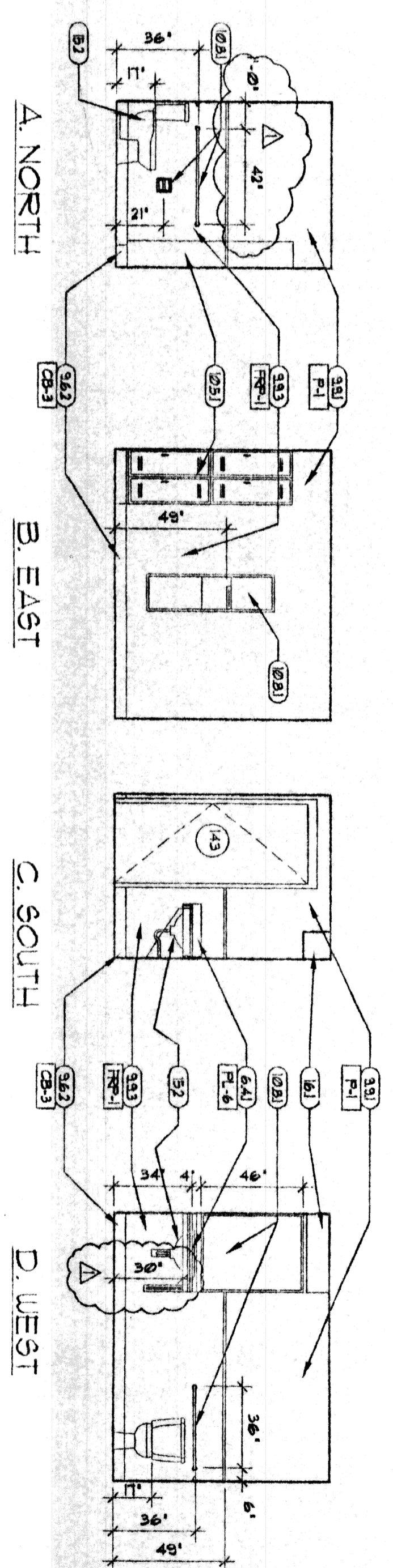


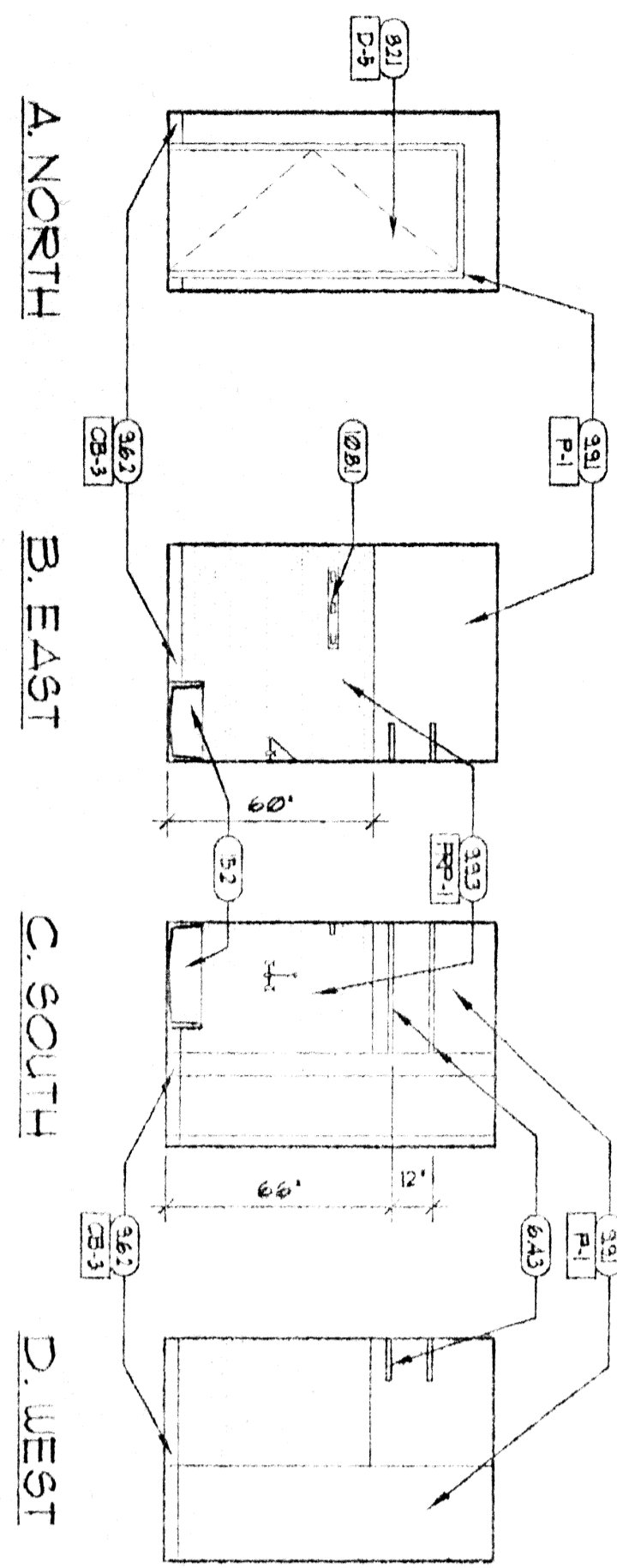
9 TECH. PARTS 141 ELEVATIONS
1/4" = 1'-0"



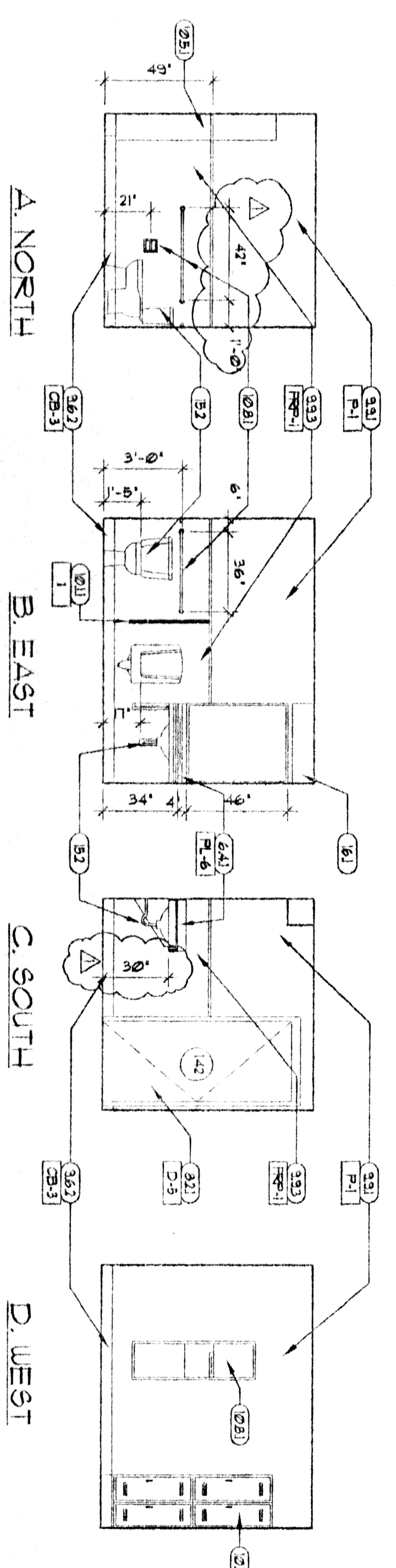
8 CASHIER AND RETAIL PARTS 130, 135
COUNTER ELEVATIONS
1/4" = 1'-0"



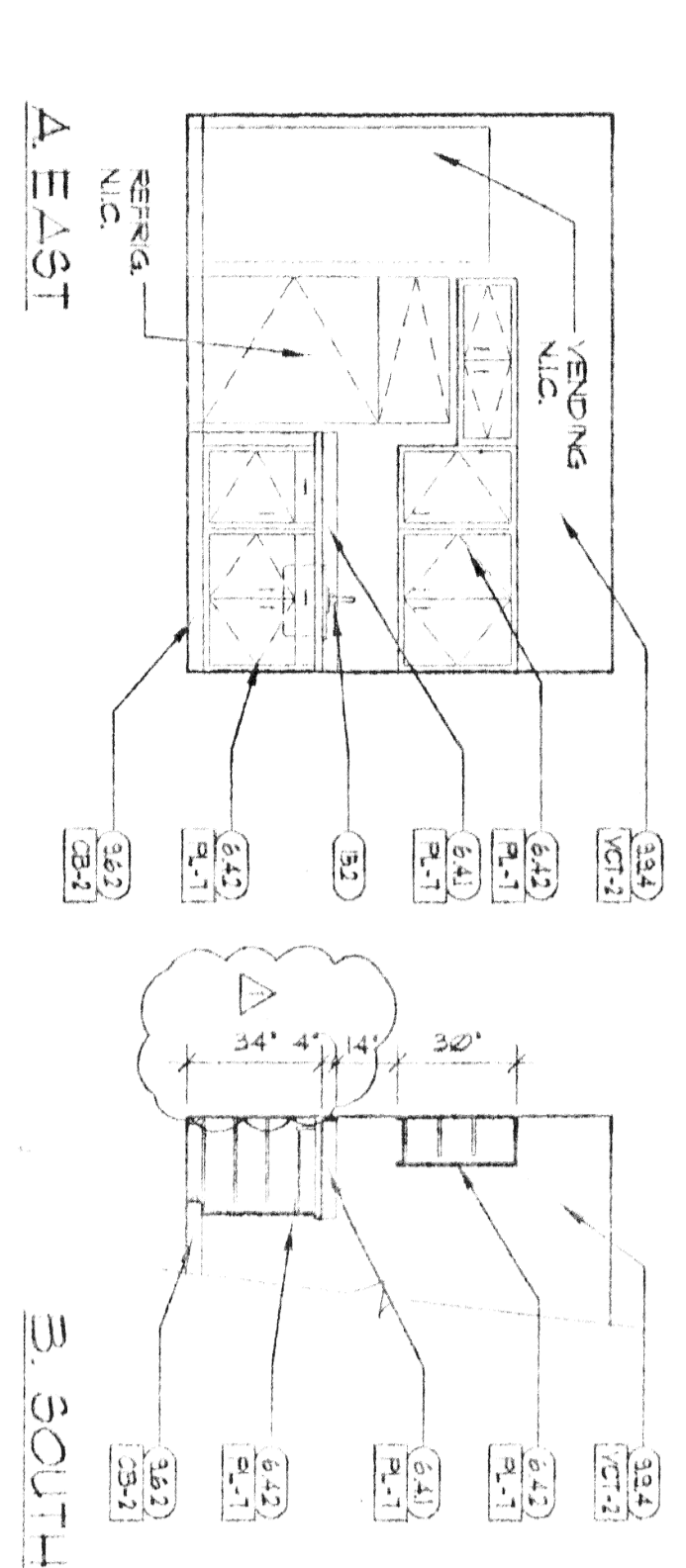
7 TECH. WOMEN'S TOILET 142 ELEVATIONS
1/4" = 1'-0"



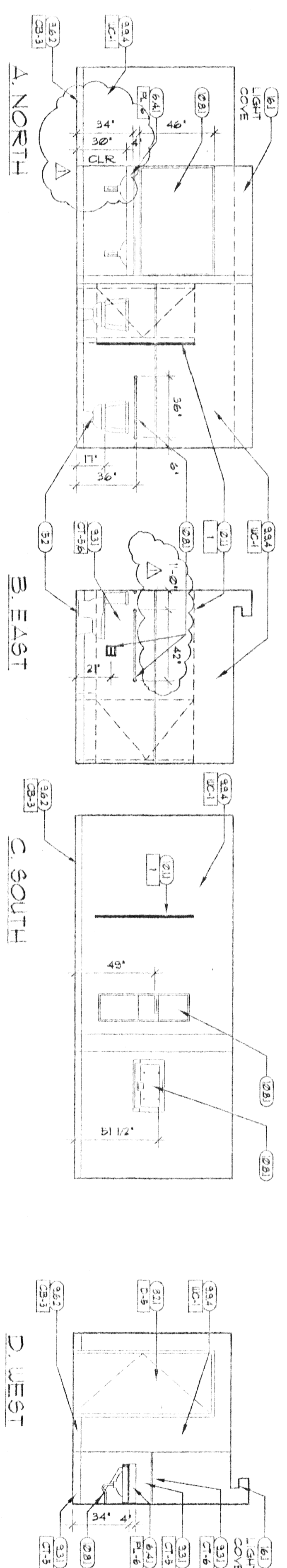
6 JANITOR CLOSET 125 ELEVATIONS
1/4" = 1'-0"



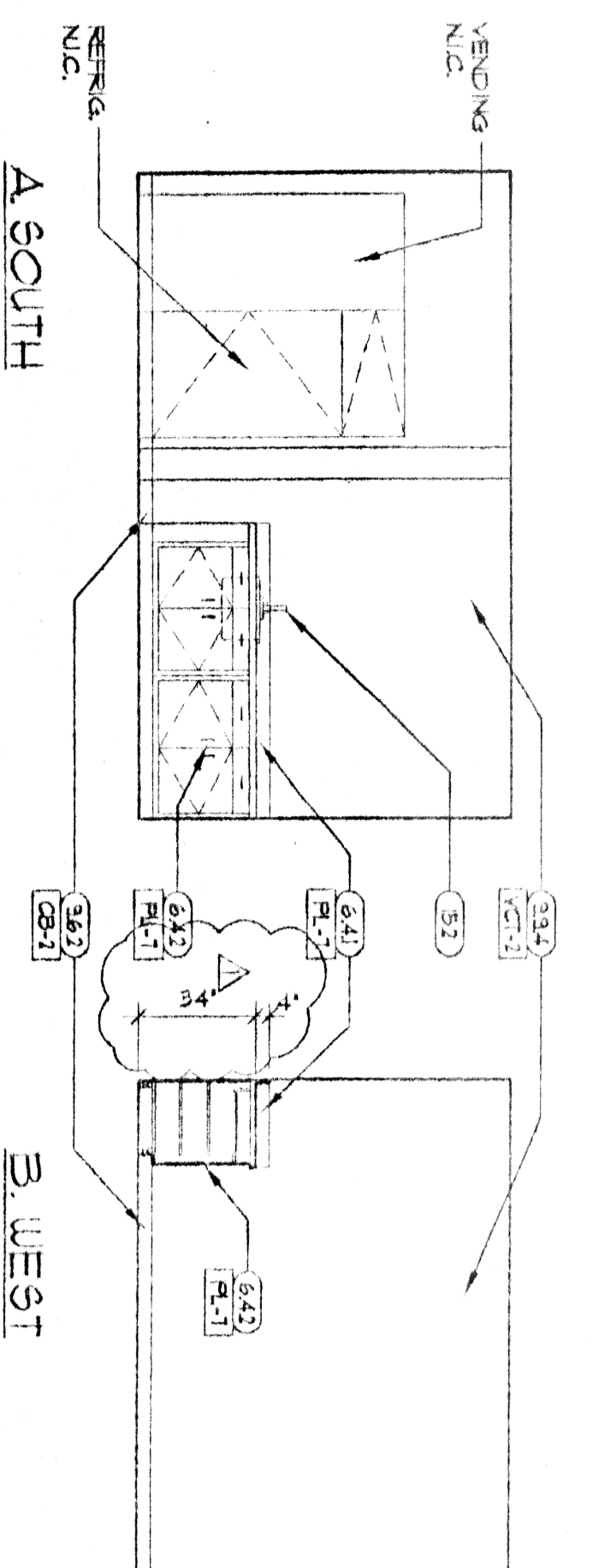
5 TECH. MEN'S TOILET 141 ELEVATIONS
1/4" = 1'-0"



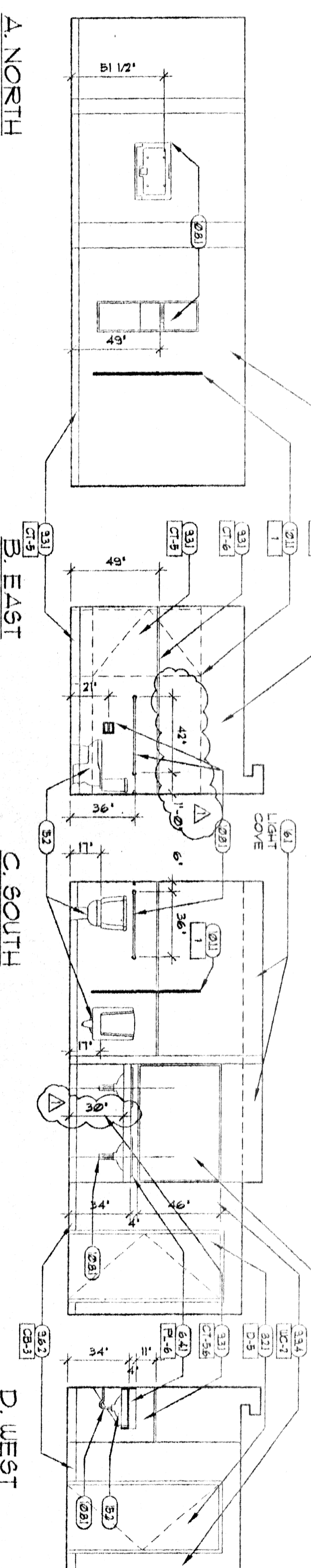
4 TECH. BREAK 145 ELEVATIONS
1/4" = 1'-0"



3 WOMEN'S PUBLIC TOILET 124 ELEVATIONS
1/4" = 1'-0"



2 CONFERENCE / BREAK 122 ELEVATIONS
1/4" = 1'-0"



1 MEN'S PUBLIC TOILET 123 ELEVATIONS
1/4" = 1'-0"

KEYED NOTES

- (21) RE. CIVIL FOR EXTERIOR PAVING
- (211) 1"X EXP. JT.
- (331) CONCRETE FOUNDATION RE. STRUCT.
- (332) CONC. SLAB ON PREPARED GRADE
- (333) CONC. FLOOR ON H.T.L. DECK
- (420) CRUI WALL RE. STRUCT FOR REIN.
- (421) STEEL SEAM RE. STRUCT.
- (422) STEEL COLUMN RE. STRUCT.
- (423) STEEL JOIST RE. STRUCT.
- (424) STEEL DECK RE. STRUCT.
- (520) GALV. FORMED STEEL FRAMING RE. STRUCT.
- (521) 3"X 6"X 1/2" SEATING
- (522) 3"X 6"X 1/2" AIR INFILTRATION BARRIER
- (523) STEEL STAIRS
- (524) 1"X 1" DIA. 9"X 1" PIPE DAMPCOLL. HORIZONTAL
- (525) 6" DIA. FIRE BOLLARD
- (610) WOOD BLOCKING-NON CORN.
- (611) 3/4" EXTERIOR GRACE FL. WOOD
- (612) FLS. LATH COUNTERTOP
- (620) FLS. LATH CABINETS
- (621) WOOD BELIEVER
- (622) BATT INSUL. WHERE REQUIRED, SEE SECTIONS
- (623) ACOUSTICAL BATT INSULATION
- (624) EISA TECH. ATTACH
- (625) EISA FORMED REVEAL
- (626) HONDA COLOR-CORPORATE METAL PANELS
- (627) HONDA COMPANY/SLAVE
- (628) 24 GA. GALV. BATT. INS. COPING
- (629) BEALANT JOINT
- (630) HT. DOOR AND FRAME
- (631) 9C. WOOD DOOR
- (632) ACCESS PANEL
- (633) COLLING FINE DOOR-LINE
- (634) OVERHEAD SECTIONAL DOOR
- (635) COLLING COUNTER SHUTTER
- (640) AMCO ALUM. STONEWORK/ FINISHED WOODS
- (641) AMCO ALUM. FLASHING/TIGHT TO FINISH STONEWORK STRIPS
- (642) 1" LOW E. GLAZING
- (643) 1/4" CLEAR GLAZING
- (644) METAL STUD PARTITION OR PARTING RE. STRUCT.
- (645) SLIP JOINT
- (646) 3/8"X 3/8"X 3/8" TYP. NY.
- (647) 3/8"X 3/8"X 3/8" TYP. NY.
- (648) 3/8"X 3/8"X 3/8" TYP. NY.
- (649) CERAMIC TILE
- (650) PORCELAIN TILE
- (651) ACOUSTICAL PANEL CEILING (84172)
- (652) RESILIENT TILE BLOORING
- (653) RESILIENT BASE
- (654) CAREET
- (655) PAINT
- (656) EXPOXY PAINT
- (657) FIBERGLASS PANEL (FIBER)
- (658) VANT. WALL COVERING (VULC)
- (659) TOILET COMPARTMENT
- (660) SQUARED BY OWNER
- (661) SINK
- (662) LOCKERS
- (663) FIRE EXTINGUISHER
- (664) TOILET ACCESSORIES
- (665) RE. LOCKERS
- (666) EQUIPMENT BY OWNER
- (667) 3/8"X 3/8"X 3/8" TYP. NY.
- (668) 3/8"X 3/8"X 3/8" TYP. NY.
- (669) 3/8"X 3/8"X 3/8" TYP. NY.
- (670) RE. MECH FOR PLUMBING FIXTURES
- (671) RE. MECH FOR HVAC
- (672) RE. ELEC FOR LIGHTING