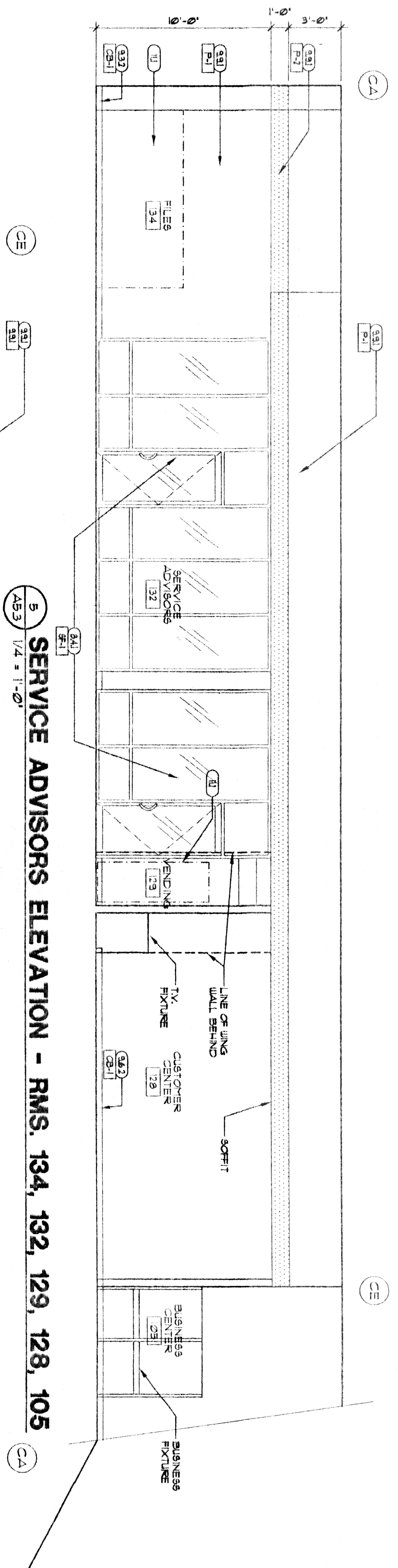
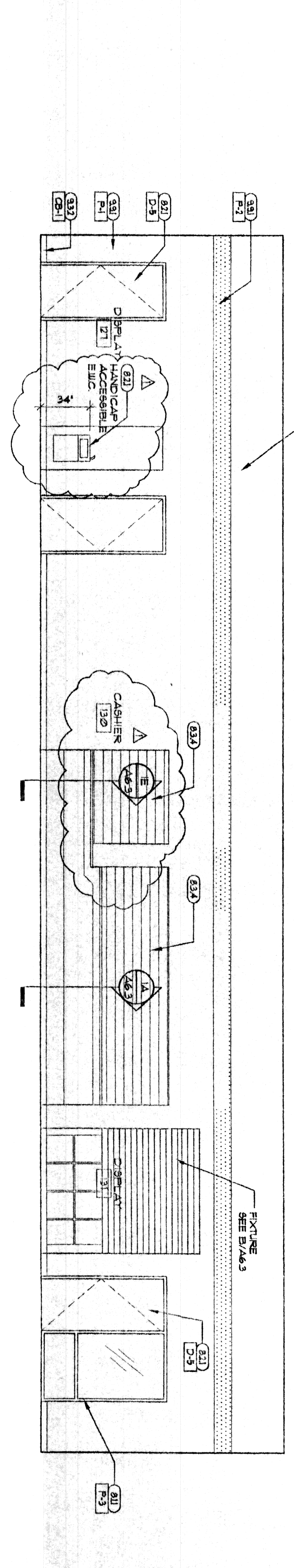


KEYED NOTES

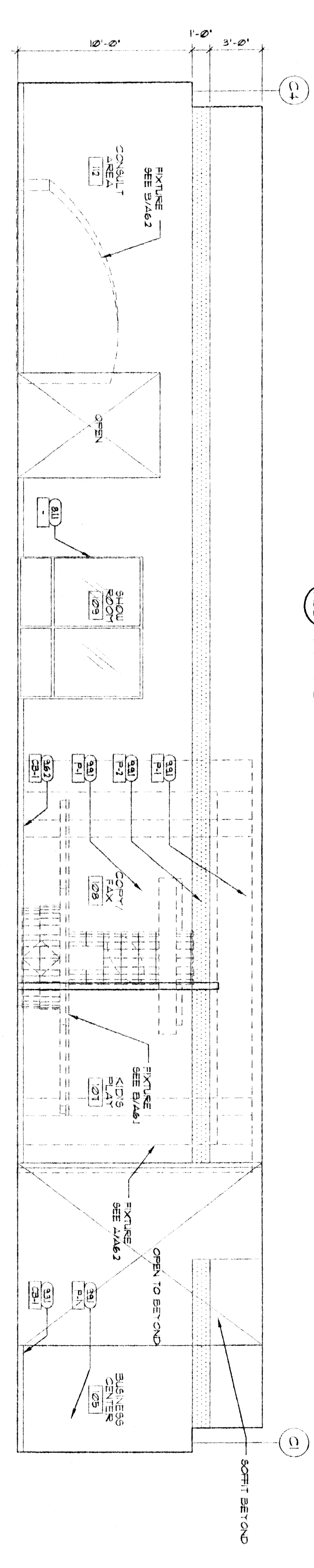
- (21) REF. CIVIL FOR EXTERIOR PAVING
- (211) 1/2" EXP. JT.
- (331) CONCRETE FOUNDATION REI. STRUCT.
- (332) CONC. SLAB ON PREPARED GRADE
- (333) CONC. FLOOR ON WTL. DECK
- (334) CHL. WALL, REI. STRUCT. FOR REINFC.
- (335) STEEL BEAM, REI. STRUCT.
- (336) STEEL COLUMN, REI. STRUCT.
- (337) STEEL JOIST, REI. STRUCT.
- (338) COLD FORMED STEEL, REINFORCING REI. STRUCT.
- (339) 8" W. GYP. SHEATHING
- (342) AIR INSULATION BARRIER
- (343) STEEL STAIRS
- (352) 1 1/2" DIA. 60 LBS. PIPE
- (353) 6" DIA. PIPE BOLLS
- (354) 3/4" EXT. GROUND R4.1000
- (355) WOOD BLOORING-NON COR-E
- (363) FLOOR LAM. CABINETS
- (364) WOOD SHELVES
- (372) BATT INSUL. WHERE REQUIRED, REI. SECTION
- (373) ACQUANTICAL BATT INSULATION
- (374) EPS. TECH. ATTACH
- (375) EPS. FORMED REVEAL
- (381) HONDA COLOR COMPOSITE VINYL PANELS
- (382) HONDA CANOPY/SLAVE
- (383) 24 GA. GALV. SHIT. HTL. COPING
- (384) SEALANT JOINT
- (385) HTL. DOOR AND FRAME
- (386) 62. WOOD DOOR
- (387) ACCESS PANEL
- (388) COLLING FINE DOOR, IIR
- (389) OVERHEAD SECTIONAL DOOR
- (391) COLLING COUNTER SHUTTER
- (392) WOOD ALUM. STOREFRONT/ ENTRANCE/WINDOW
- (393) WOOD ALUM. FLASHING/RIGHT TO MATCH STOREFRONT SYSTEM
- (394) 1" LOW ET. GLAZING
- (395) 1/4" CLEAR GLAZING
- (401) METAL STD. PARTITION OR REVEAL REI. SCHEM.
- (402) SLIP JOINT
- (403) 8" W. GYP. BO. CEILING
- (404) 8" W. GYP. BO. TYPE 'X'
- (405) 8" W. GYP. BO. TYPE 'X'
- (406) 8" W. GYP. BO.
- (411) CERAMIC TILE
- (412) PORCELAIN TILE
- (413) ACQUANTICAL PANEL, CEILING (84172)
- (414) RESILIENT TILE FLOORING
- (415) RESILIENT SLABE
- (416) CABINET
- (417) PAINT
- (418) EPoxy PAINT
- (419) FERRULE/JOE PANEL (REQD)
- (420) VINYL WALL COVERING (VWC)
- (421) TOILET COMPARTMENT
- (422) SERVICE BY OWNER
- (423) SIGN
- (424) LOCKER
- (425) FIRE EXTINGUISHER
- (426) TOILET ACCESSORIES
- (427) REI. SCHEM.
- (428) EQUIPMENT BY OWNER
- (429) 8" W. BARRIER BY OWNER 422. COORD. INSTALLATION
- (431) METAL BUILDING SYSTEM
- (432) DUCTER
- (433) FLASHING
- (434) REI. TECH. FOR PLUMBING FIXTURES
- (435) REI. TECH. FOR HVAC
- (436) REI. ALSO FOR LIGHTING



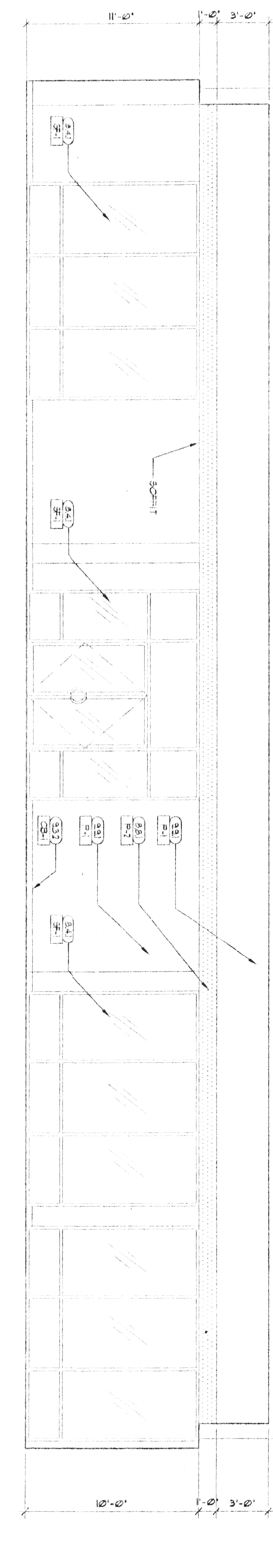
5 SERVICE ADVISORS ELEVATION - RMS. 134, 132, 129, 128, 105
 1/4" = 1'-0"



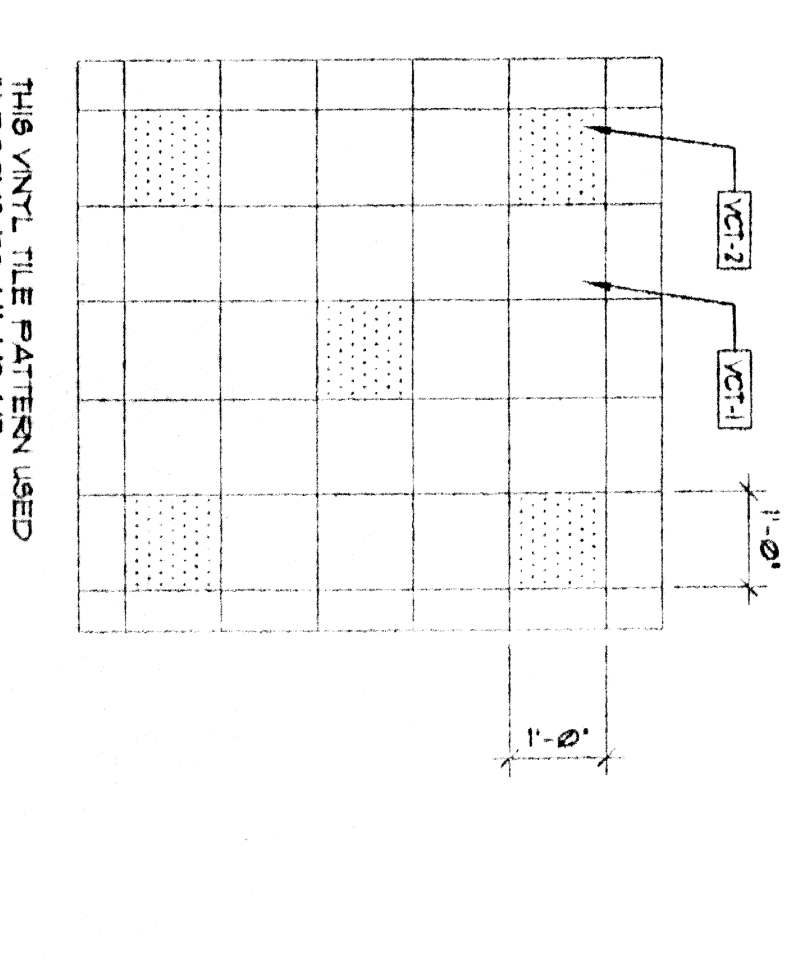
4 DISPLAY EAST ELEVATION - RMS. 127, 130, 131
 1/4" = 1'-0"



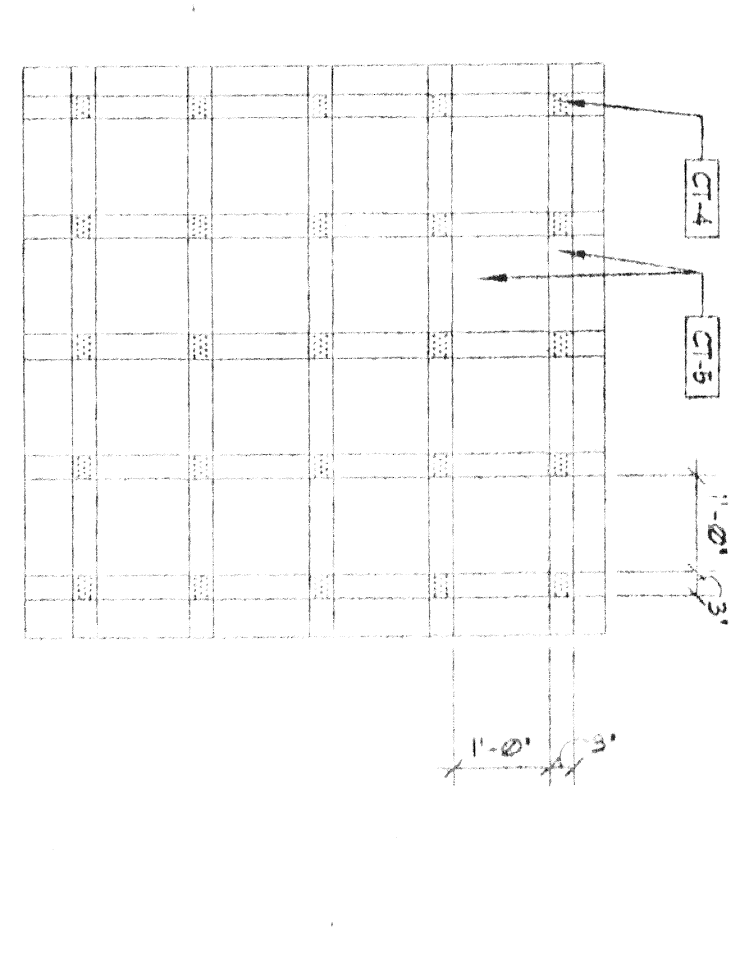
3 SHOWROOM SOUTH ELEVATION - RMS. 112, 109, 108, 107, 105
 1/4" = 1'-0"



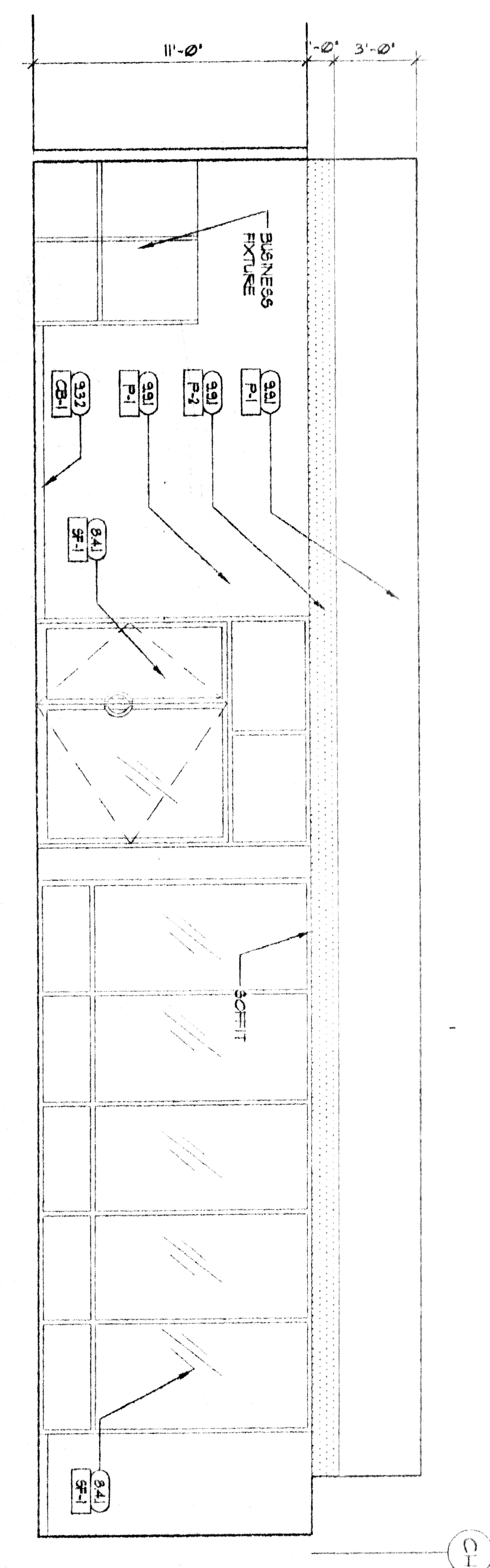
2 SHOWROOM NORTH ELEVATION - RMS. 103, 102, 111
 1/4" = 1'-0"
 REFER TO PLAN FOR WINDOW SIZES



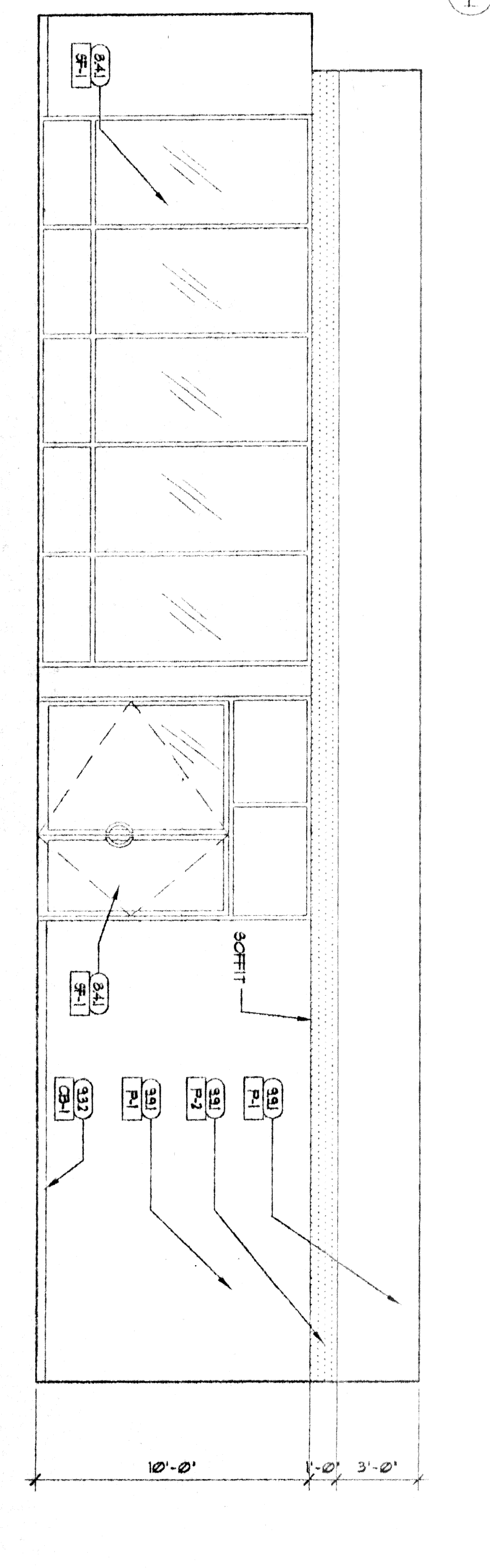
8 FLOOR PATTERN A
 1/2" = 1'-0"



1 FLOOR PATTERN B
 1/2" = 1'-0"



6 SHOWROOM WEST ELEVATION - RM. 104
 1/4" = 1'-0"



5 SHOWROOM EAST ELEVATION - RM. 110
 1/4" = 1'-0"