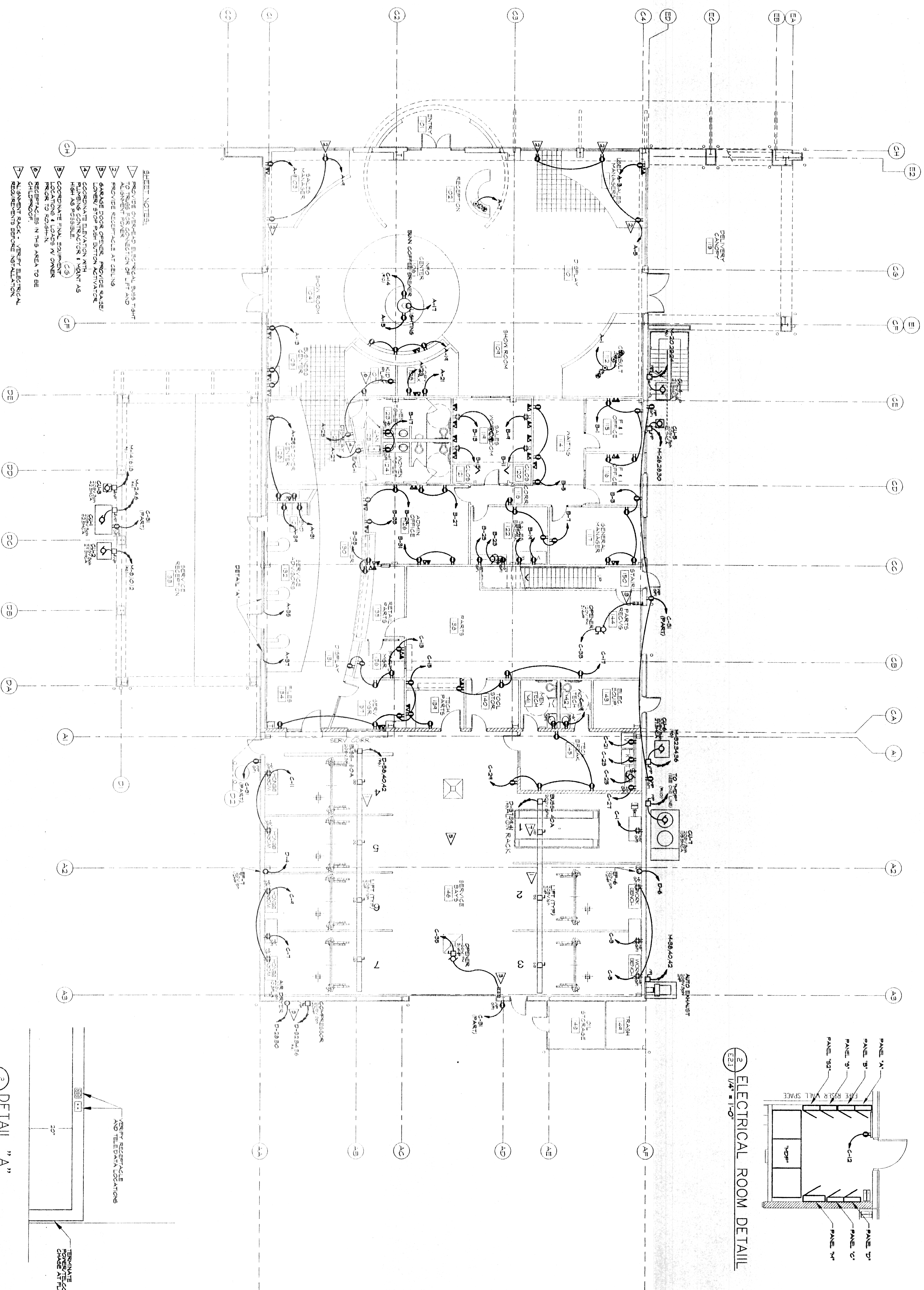
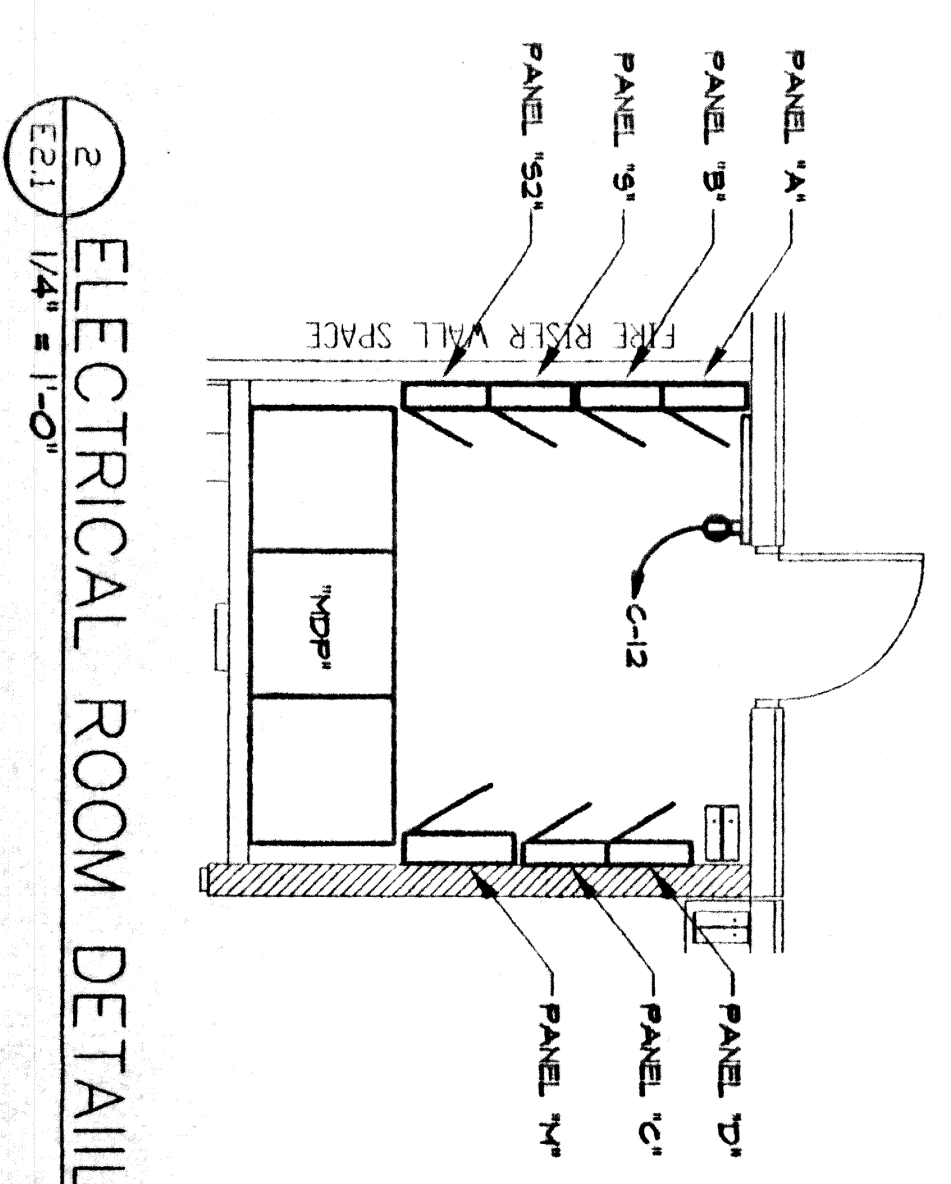


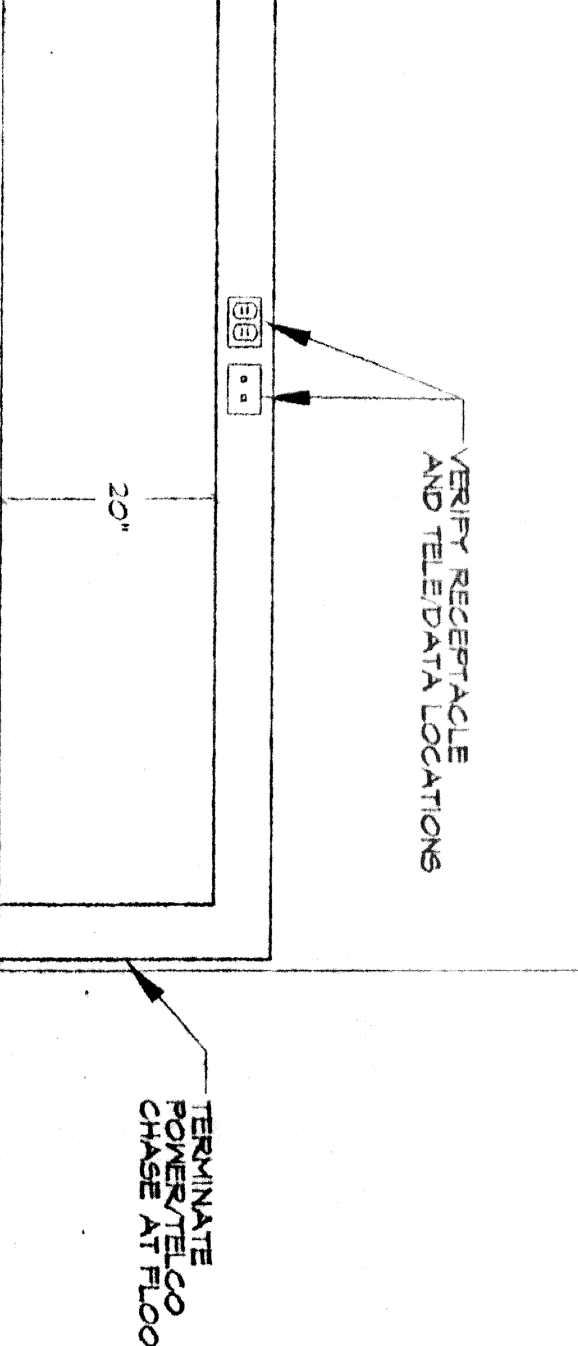
UPON ACCEPTANCE OF THIS DRAWING OR OTHER DATA ON ANY ELECTRONIC MEDIA GENERATED AND PROVIDED BY PRIEST ENGINEERING, THE RECIPIENT COVENANTS AND AGREES THAT ALL SUCH DRAWINGS AND DATA ARE INSTRUMENTS OF SERVICE AND BELONG TO PRIEST ENGINEERING, INC. THESE FILES ARE THE PROPERTY OF PRIEST ENGINEERING, INC. AND SHALL REMAIN THE PROPERTY OF PRIEST ENGINEERING, INC. THE RECIPIENT AGREES TO MAKE ALL NECESSARY ADJUSTMENTS TO THE DRAWINGS AND DATA TO CORRECT ANY ERRORS OR OMISSIONS. THE RECIPIENT AGREES TO HOLD PRIEST ENGINEERING, INC. HARMLESS FROM ANY DAMAGE, LIABILITY OR COST, INCLUDING ATTORNEY'S FEES AND COSTS OF DEFENSE, ARISING FROM ANY CHANGES OR REUSE OF THESE DRAWINGS OR DATA IN ANY MANNER. ALL TERMS AND CONDITIONS CONTAINED HEREIN ARE HEREBY ACCEPTED AS A CONDITION OF RECEIPT OF THESE DOCUMENTS, DRAWINGS, AND/OR ELECTRONIC FILES. ALL INFORMATION CONTAINED HEREIN IS THE PROPERTY OF PRIEST ENGINEERING, INC.



- SHEET NOTES:**
- 1. PROVIDE OVERHEAD ELECTRICAL SYSTEM TO TRUCKS FOR CONNECTION OF LIFT AND ALIGNMENT POWER
 - 2. PROVIDE RECEPTACLE AT CEILING
 - 3. GARAGE DOOR OPENER, PROVIDE BASE/LOWER STOP POSITION ACTIVATOR
 - 4. COORDINATE ELEVATION WITH MECHANICAL CONTRACTOR & VENT AS PER CONTRACT (S)
 - 5. COORDINATE FINAL EQUIPMENT LOCATION WITH TV OWNER
 - 6. RECEPTACLE IN THIS AREA TO BE CHILPROOF
 - 7. ALIGNMENT SACK - VERIFY ELECTRICAL REQUIREMENTS BEFORE INSTALLATION



2 ELECTRICAL ROOM DETAIL
E21 1/4" = 1'-0"



3 DETAIL "A"
E21 1/4" = 1'-0"

HONDA OF SLIDELL
NEW FACILITY
SLIDELL, LA.

THOMAS PARTNERSHIP
ARCHITECTURE-PLANNING

3000 SOUTH VINE STREET, DENVER, COLORADO 80210 PHONE (303) 589-7504 FAX (303) 691-9790

| | |
|----------------|------------------------|
| DATE: | 2/10/03 |
| DRAWN BY: | SB |
| SCALE: | AS NOTED |
| JOB NUMBER: | 2002.21 |
| DRAWING TITLE: | FIRST FLOOR POWER PLAN |
| E21 | |

PRIEST ENGINEERING, INC.
3000 SOUTH VINE STREET
DENVER, COLORADO 80210
303.589.7504
303.691.9790

3/10/03
E21