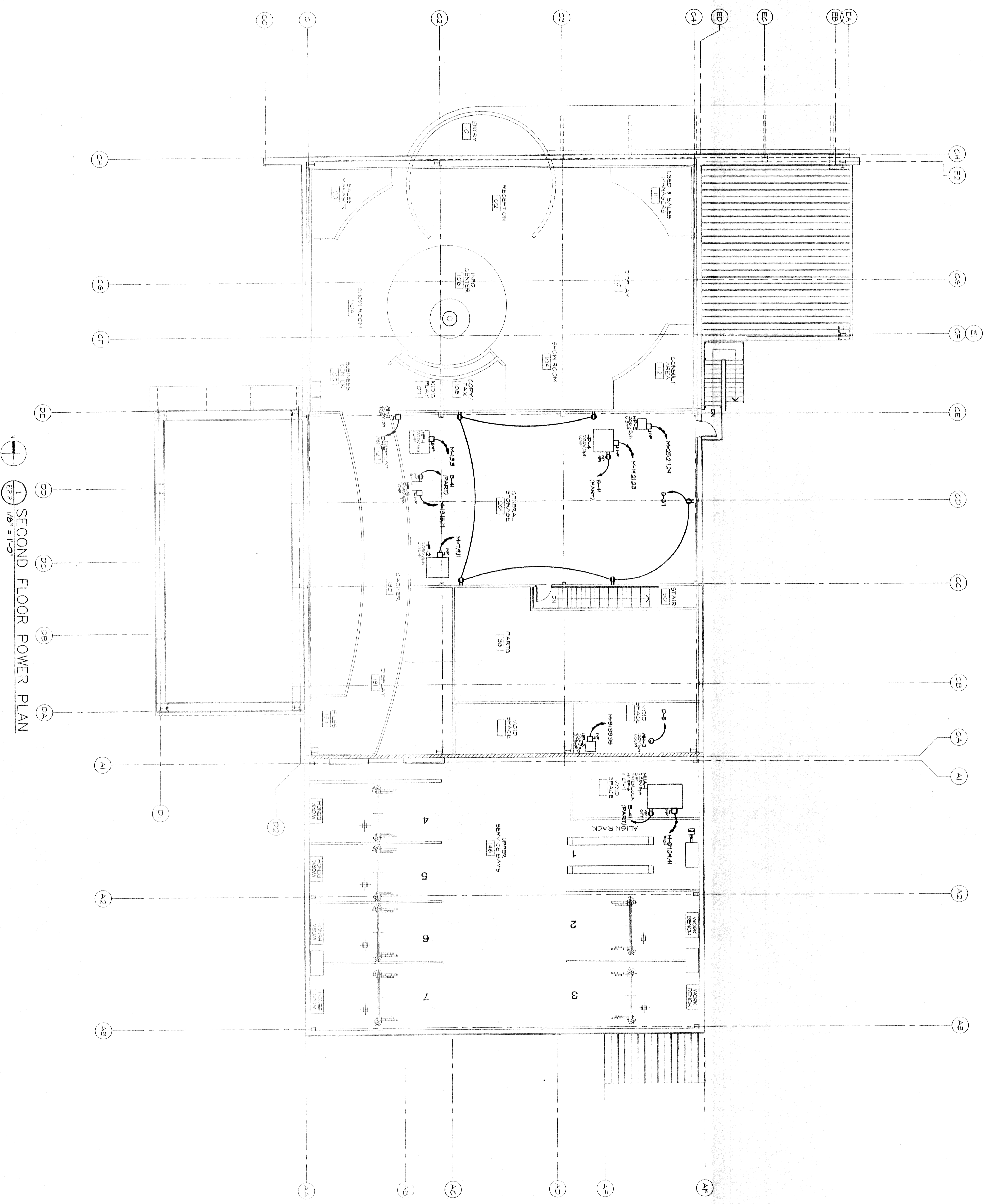


UPON ACCEPTANCE OF THIS DRAWING OR OTHER DATA OR ANY REPRODUCING MEDIA GENERATED AND PROVIDED BY PRIEST ENGINEERING, INC. THE RECIPIENT HEREBY AGREES THAT ALL SUCH DRAWINGS AND DATA ARE INSTRUMENTS OF SERVICE AND BELONG TO PRIEST ENGINEERING, INC. THESE FILES ARE TRANSMITTED WITHOUT WARRANTY AS TO THEIR ACCURACY OR SUFFICIENCY FOR THE PURPOSES TO WHICH THE RECIPIENT INTENDS TO USE THEM. THE RECIPIENT AGREES TO WAIVE ALL CLAIMS AGAINST PRIEST ENGINEERING, INC. RESULTING IN ANY WAY FROM ANY UNAUTHORIZED CHANGES OR REUSE OF THE DRAWINGS OF DATA IN ADDITION, THE RECIPIENT AGREES TO THE FULLEST EXTENT PERMITTED BY LAW, TO INDEMNIFY AND HOLD PRIEST ENGINEERING, INC. HARMLESS FROM ALL DAMAGE, LIABILITY OR COST, INCLUDING ATTORNEY'S FEES AND COSTS OF DEFENSE, ARISING FROM ANY CHANGES OR REUSE OF THESE DRAWINGS. THESE DRAWINGS SHALL NOT BE USED OR COPIED FOR ANY OTHER PROJECT. ALL TERMS AND CONDITIONS CONTAINED HEREIN ARE AGREED TO AND ACCEPTED AS A CONDITION OF RECEIPT OF THESE DOCUMENTS, DRAWINGS AND/OR ELECTRONIC FILES. ALL INFORMATION CONTAINED HEREIN IS THE PROPERTY OF PRIEST ENGINEERING, INC.



1 SECOND FLOOR POWER PLAN

HONDA OF SLIDELL
NEW FACILITY
SLIDELL, LA.

THOMAS PARTNERSHIP
ARCHITECTURE-PLANNING

3000 SOUTH VINE STREET, DENVER, COLORADO 80210 PHONE (303) 589-7504 FAX (303) 691-9790

DATE:	2/10/03
DRAWN BY:	SE
SCALE:	AS NOTED
CAD NUMBER:	20021
DRAWING TITLE:	SECOND FLOOR POWER PLAN

E2.2