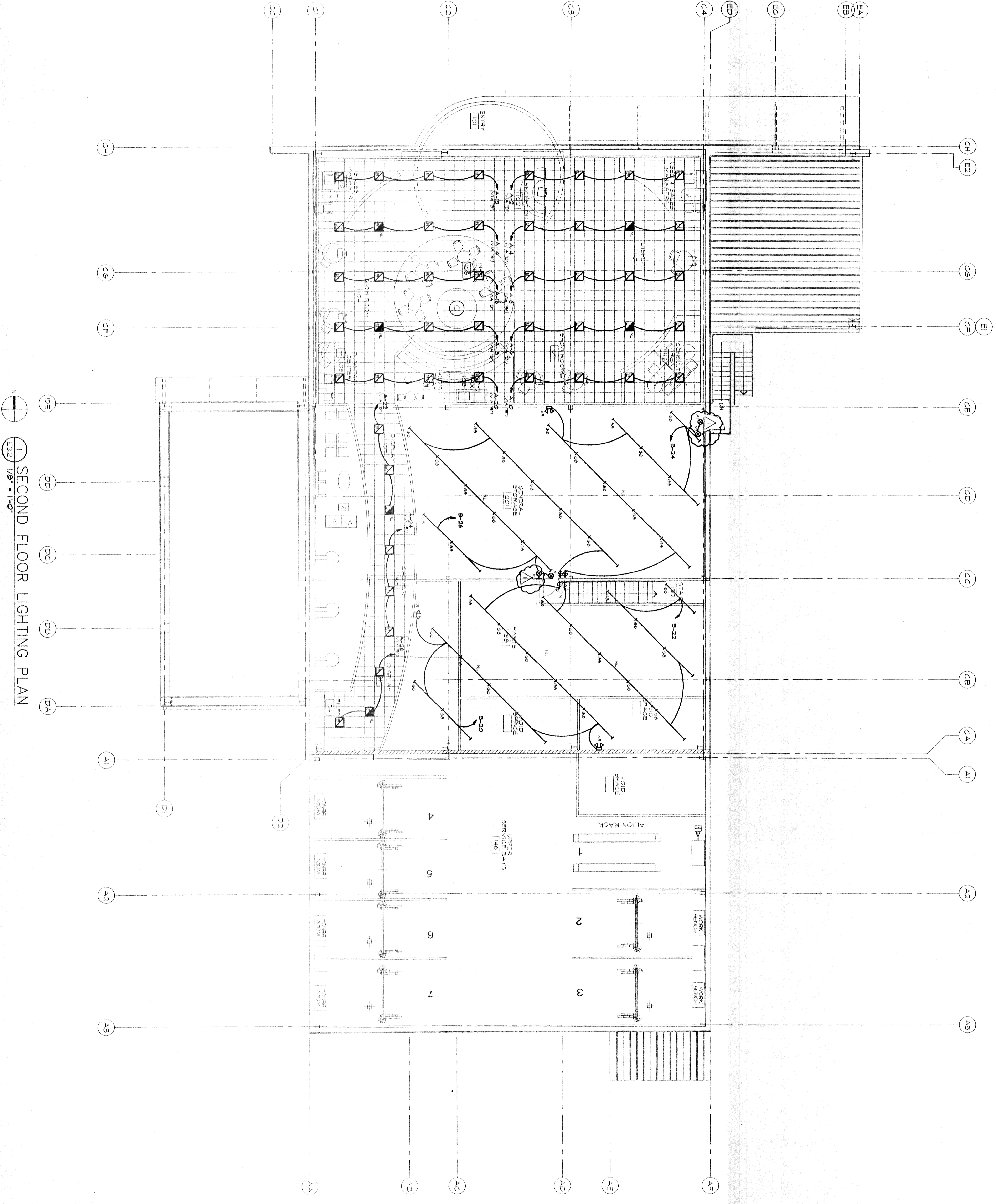


UPON ACCEPTANCE OF THIS DRAWING OR OTHER DATA OR ANY ELECTRONIC MEDIA GENERATED AND PROVIDED BY PRIEST ENGINEERING, INC. THE RECIPIENT COVENANTS AND AGREES THAT ALL SUCH DRAWINGS AND DATA ARE INSTRUMENTS OF SERVICE AND BELONG TO PRIEST ENGINEERING, INC. THESE FILES ARE TRANSMITTED WITHOUT WARRANTY AS TO THEIR ACCURACY OR SUITABILITY FOR THE PURPOSES TO WHICH THE RECIPIENT INTENDS TO USE THEM. THE RECIPIENT AGREES TO WAIVE ALL CLAIMS AGAINST PRIEST ENGINEERING, INC. RESULTING OR ARISING FROM ANY UNAUTHORIZED CHANGES OR REUSE OF THE DRAWING OR DATA. IN ADDITION, THE RECIPIENT AGREES TO THE FULLEST EXTENT PERMITTED BY LAW, TO INDEMNIFY AND HOLD PRIEST ENGINEERING, INC. HARMLESS FROM ANY DAMAGE, LIABILITY OR COST, INCLUDING ATTORNEY'S FEES AND COST OF DEFENSE, ARISING FROM ANY CHANGES OR REUSE OF FILES. THESE DRAWINGS SHALL NOT BE USED OR COPIED FOR ANY OTHER PROJECT. ALL TERMS AND CONDITIONS CONTAINED HEREIN ARE AGREED TO AND ACCEPTED AS A CONDITION OF RECEIPT OF THESE DOCUMENTS, DRAWINGS, AND/OR ELECTRONIC FILES. ALL INFORMATION CONTAINED HEREIN IS THE PROPERTY OF PRIEST ENGINEERING, INC.



1 SECOND FLOOR LIGHTING PLAN
E3.2 1/8" = 1'-0"

PRIEST ENGINEERING, INC.
600 South Holly Street, Suite 102
Ft. Worth, Texas 76102
Phone: (817) 732-7777
Fax: (817) 732-7777
www.priesteng.com

HONDA OF SLIDELL
NEW FACILITY
SLIDELL, LA.

THOMAS PARTNERSHIP
ARCHITECTURE-PLANNING

3000 SOUTH VINE STREET, DENVER, COLORADO 80210 PHONE (303) 589-7504 FAX (303) 691-9790

DATE:	2/10/03
DRAWN BY:	SB
SCALE:	AS NOTED
JOB NUMBER:	2002.1
DRAWING TITLE:	SECOND FLOOR LIGHTING PLAN

E3.2