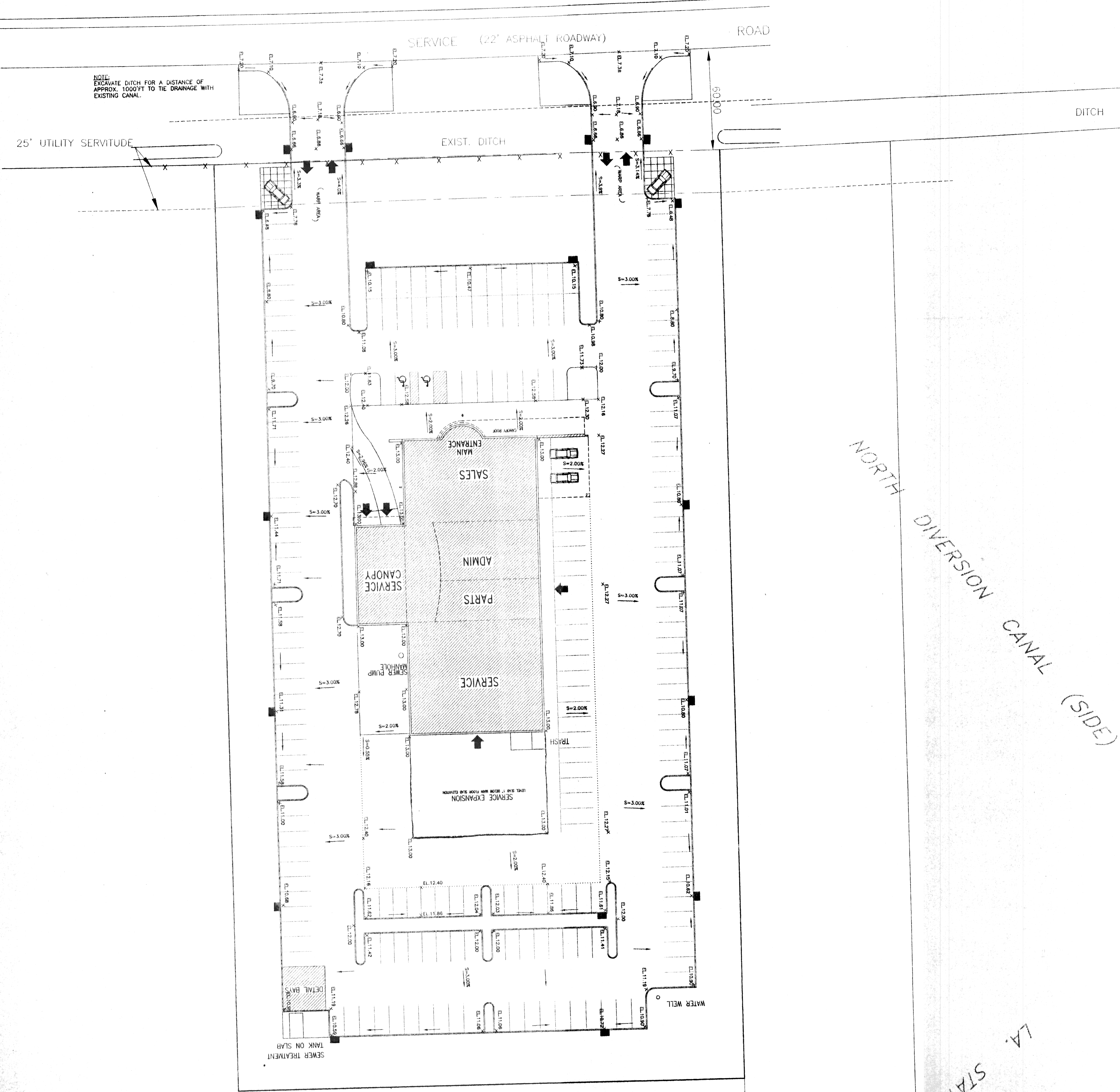


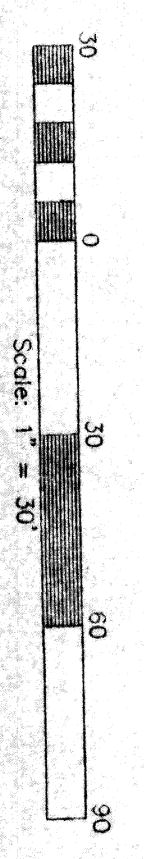
INTERSTATE HIGHWAY No. 10
(450' R.O.W.)

TO NEW ORLEANS

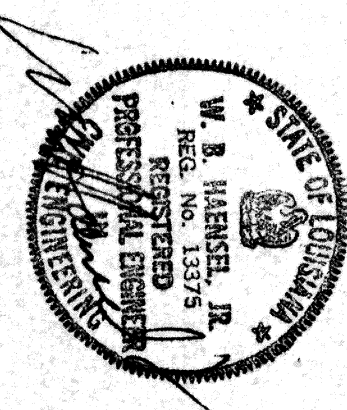
TO SLIDELL



NOTE: EXCAVATE DITCH FOR A DISTANCE OF APPROX. 1000 FT TO THE DRAINAGE WITH EXISTING CANAL.



| NO. | REVISIONS | DATE |
|---------|----------------|------|
| 1-15-02 | ISSUED GRADING | |
| | DESCRIPTION | |
| | REVISIONS | |



FOR CONSTRUCTION
ARCHITECT _____ OWNER _____ CONTRACTOR _____
DATE: 4/10/02

HONDA DEALERSHIP
LAKESHORE ESATES
ST. TAMMANY PARISH, LA.

GRADING PLAN

KREBS, LaSALLE, LEMIEUX, CONSULTANTS, INC.
ENGINEERING • PLANNING • SURVEYING • HYDROLOGY • ENVIRONMENTAL
3013 27TH STREET METairie, LA 70002 (504)837-9470
2107 N. CAUSEWAY BLVD. SUITE F. WABDEVILLE, LA 70448 (504)924-5125
DATE: OCTOBER 29, 2002 SCALE: 1" = 30' DRAWING NO. 5 OF 14
CHECKED BY: J.L.R. APPROVED BY: C.A.C.