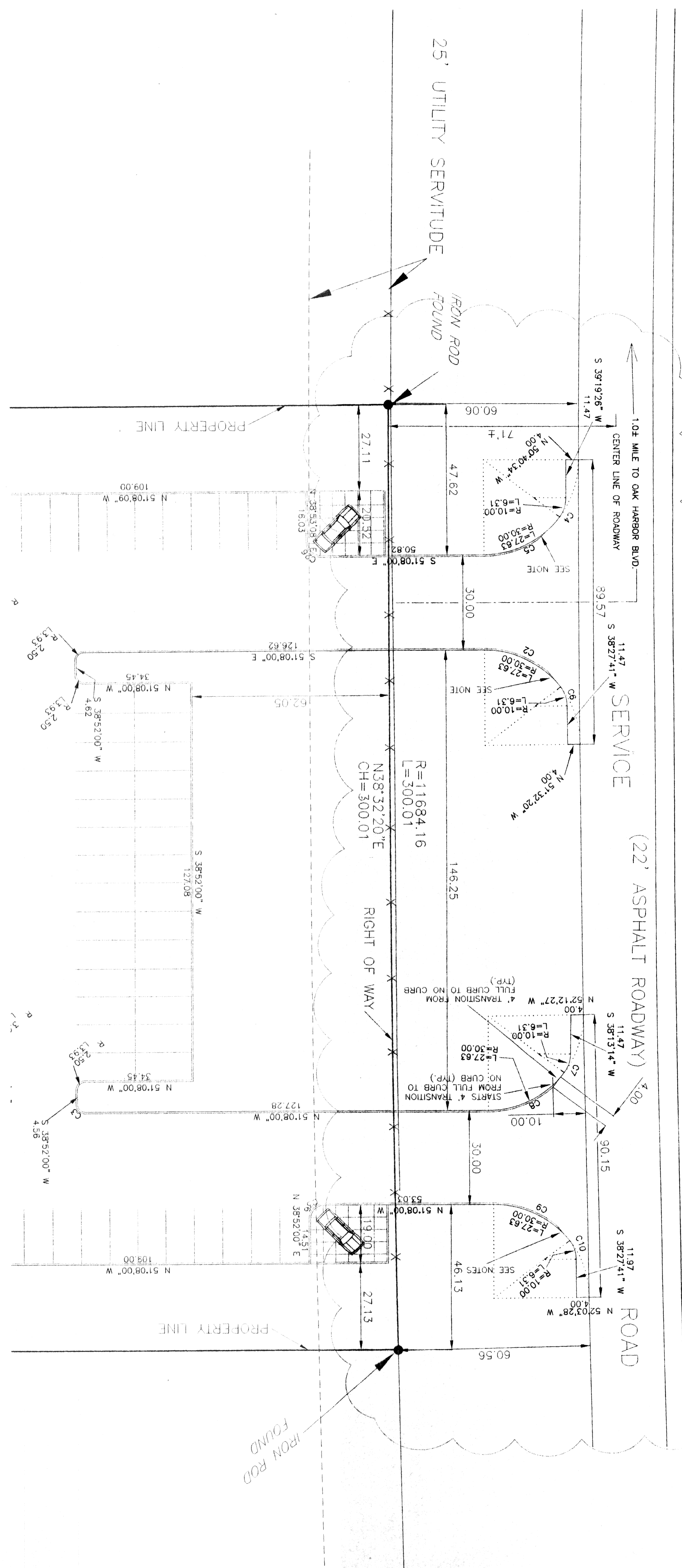


INTERSTATE HIGHWAY No. 10

(450' R.O.W.)

TO NEW ORLEANS

TO SLIDELL



NUMBER	CHORD	DIRECTION	RADIUS	ARC LENGTH	CHORD LENGTH
C1	N 83°52'00" E	2.50	13.93	3.54	28.66
C2	N 24°40'50" W	30.00	27.63	3.54	28.66
C3	N 05°08'00" W	2.50	3.93	6.31	6.31
C4	N 57°42'41" E	10.00	6.42	28.66	28.66
C5	S 77°31'03" E	30.00	27.63	6.31	6.31
C6	N 20°05'27" E	10.00	6.42	28.66	28.66
C7	N 57°42'41" E	10.00	6.42	6.31	6.31
C8	S 77°31'03" E	30.00	27.63	28.66	28.66
C9	S 24°40'50" E	30.00	27.63	28.66	28.66
C10	S 20°05'27" W	10.00	6.42	6.31	6.31

FOR CONSTRUCTION

ARCHITECT: **KREBS, LASALLE, LAMIEUX, CONSULTANTS, INC.**

OWNER: **HONDA DEALERSHIP**

DATE: **11/19/03**

CONTRACTOR: **HONDA DEALERSHIP**

HONDA DEALERSHIP

LAKE SHORE ESATES

ST. TAMMANY PARISH, LA.

HWY. PERMIT GEOM.

NO.	DESCRIPTION	DATE	BY	APPROVED BY
1	5/7/2003 REVISIONS	5/7/2003	REVISIONS	
2	5/7/2003 REVISIONS	5/7/2003	REVISIONS	
3	5/7/2003 REVISIONS	5/7/2003	REVISIONS	
4	5/7/2003 REVISIONS	5/7/2003	REVISIONS	
5	5/7/2003 REVISIONS	5/7/2003	REVISIONS	