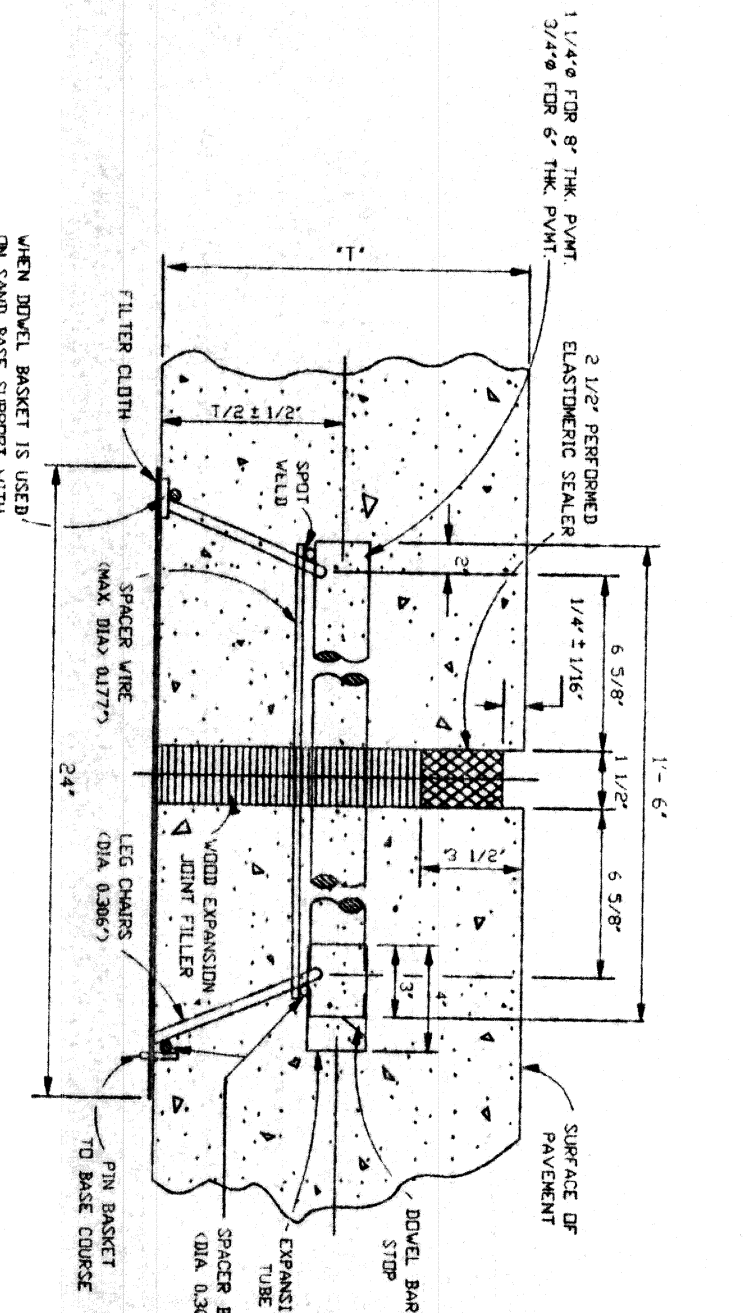
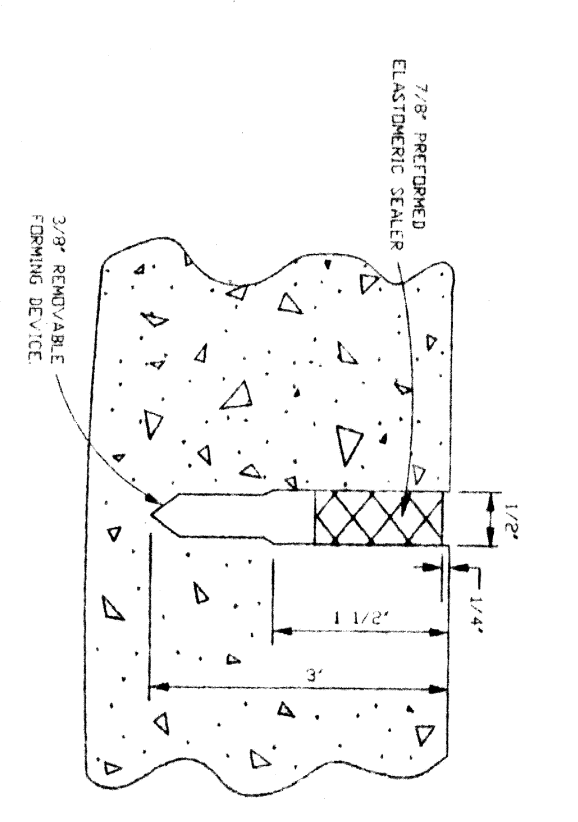


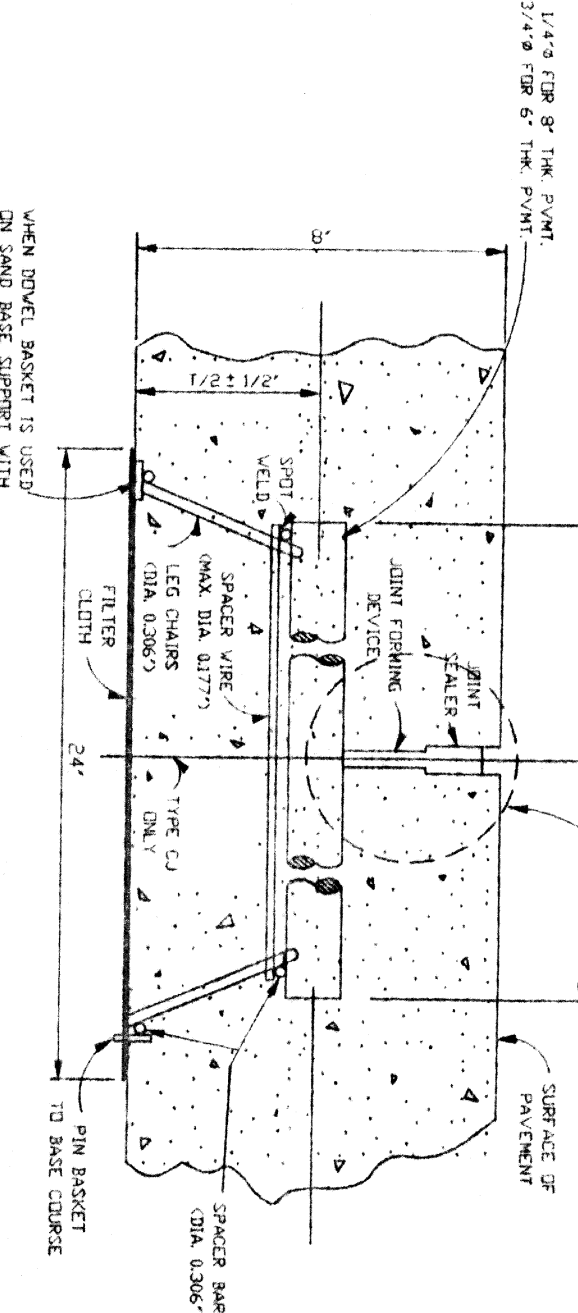
DEFORMED LONGITUDINAL JOINT (LJ)



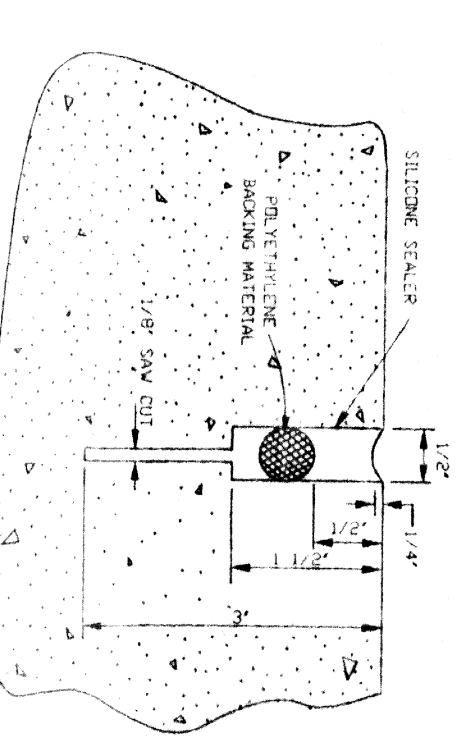
TRANSVERSE EXPANSION JOINT (EJ)



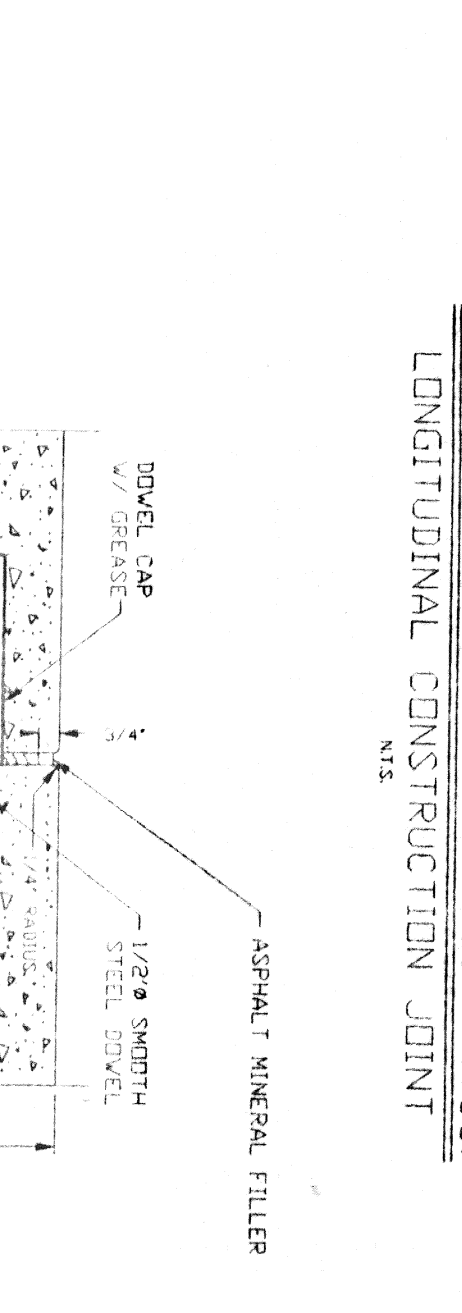
DETAIL 'A'



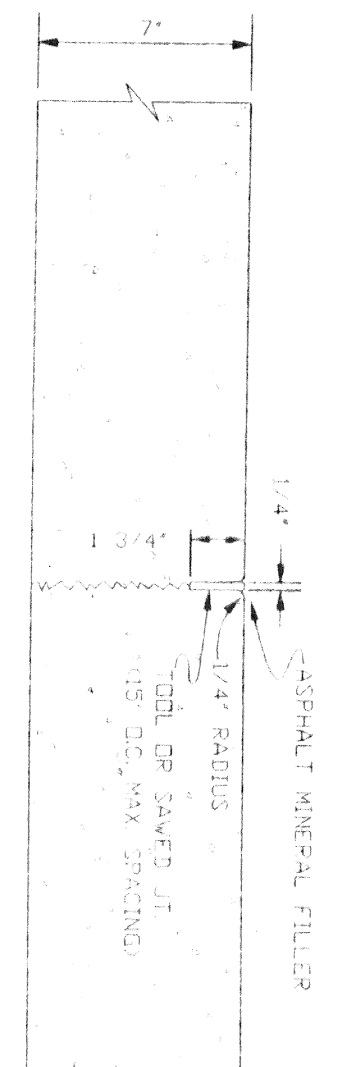
TRANSVERSE CONTRACTION JOINT (CJ)



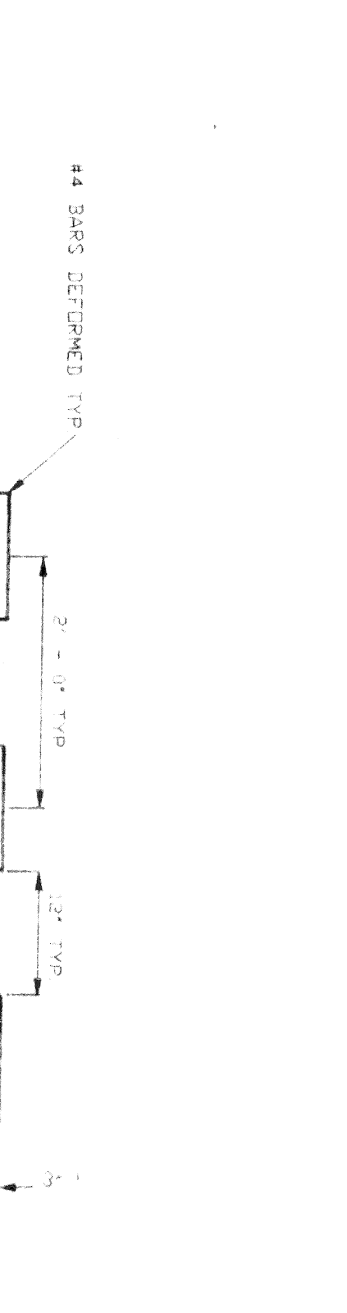
DETAIL 'B'



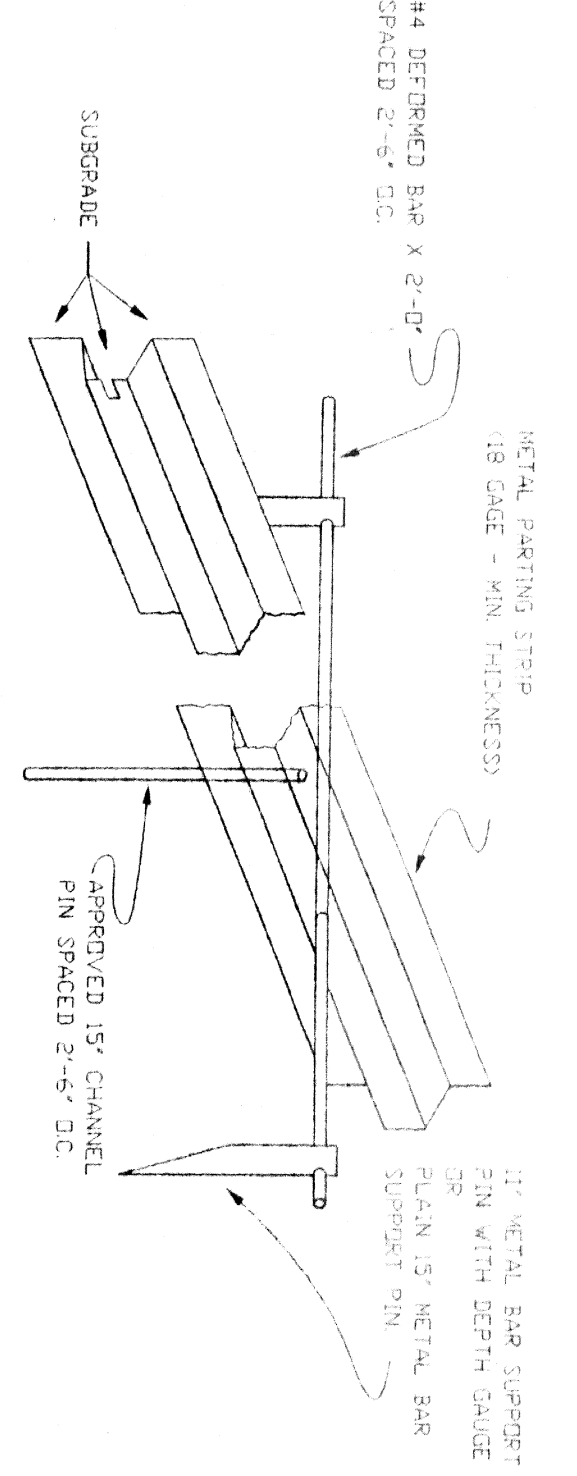
EXPANSION JOINT FOR SIDEWALKS



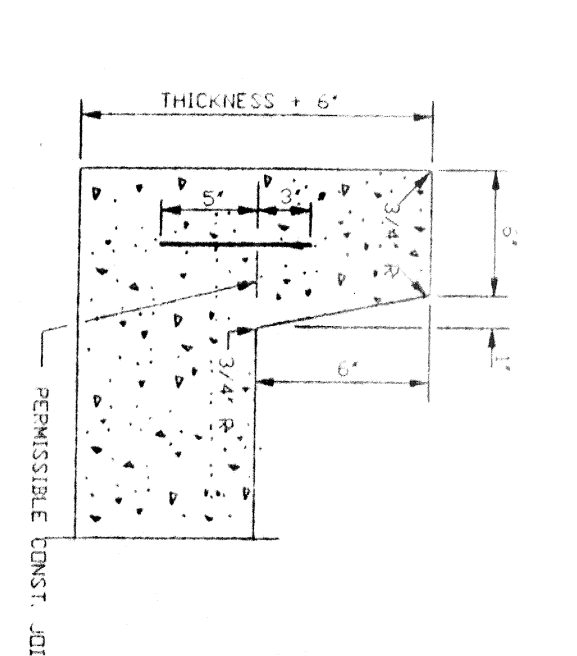
TRANSVERSE CONTRACTION JOINT (CJ) (D)



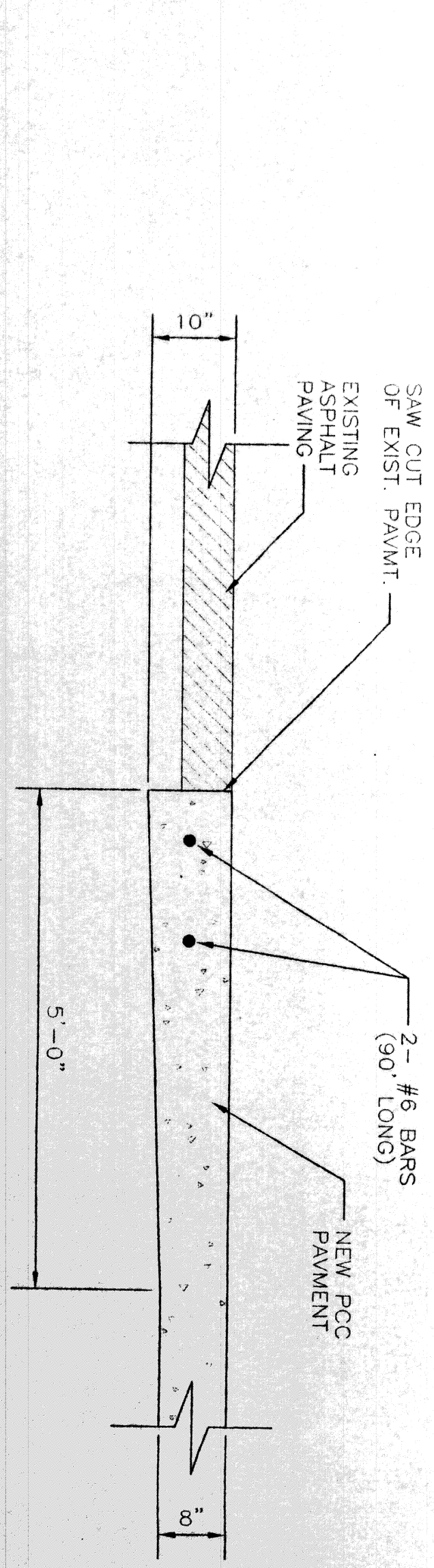
CURB DOWELS



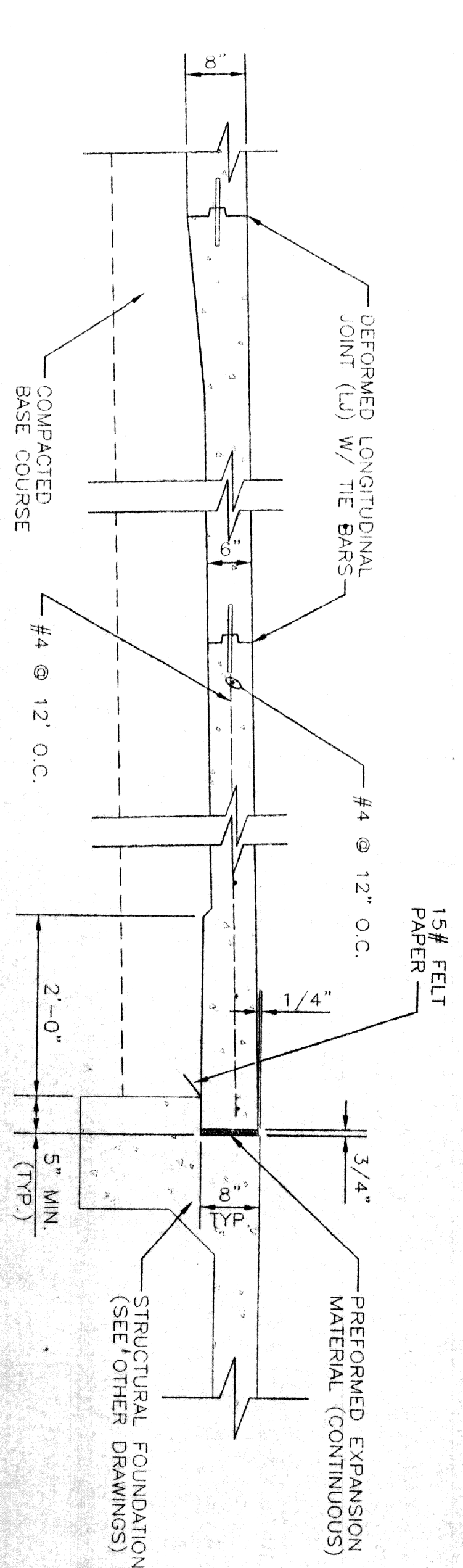
OBlique VIEW METAL PARTING STRIP FOR DEFORMED LONGITUDINAL JOINT



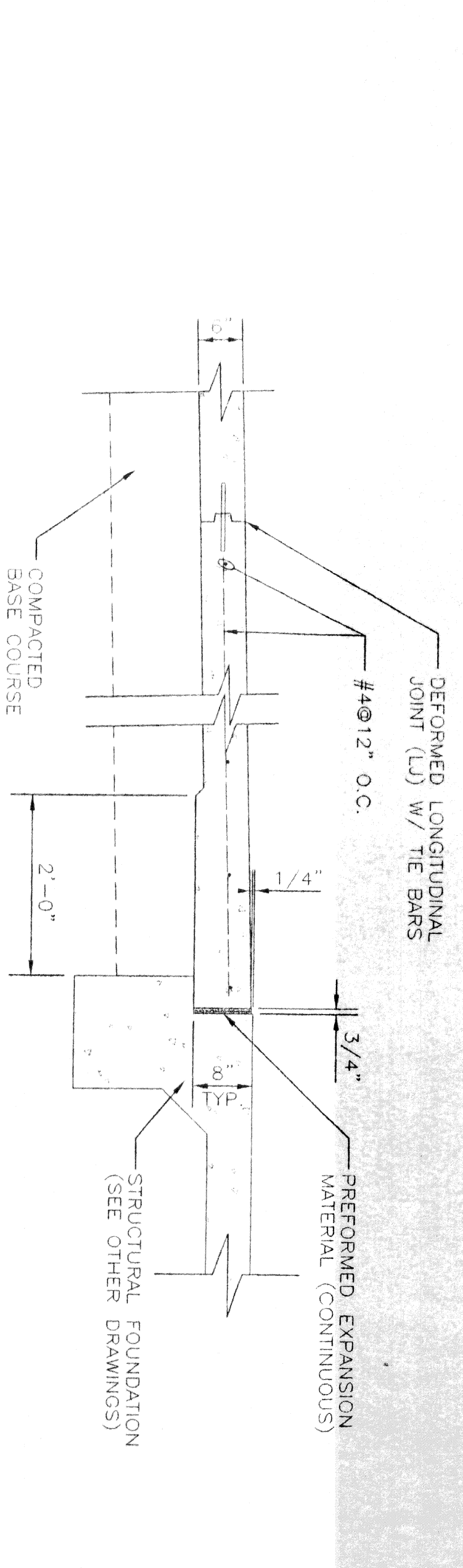
6" BARRIER TYPE CONCRETE CURB



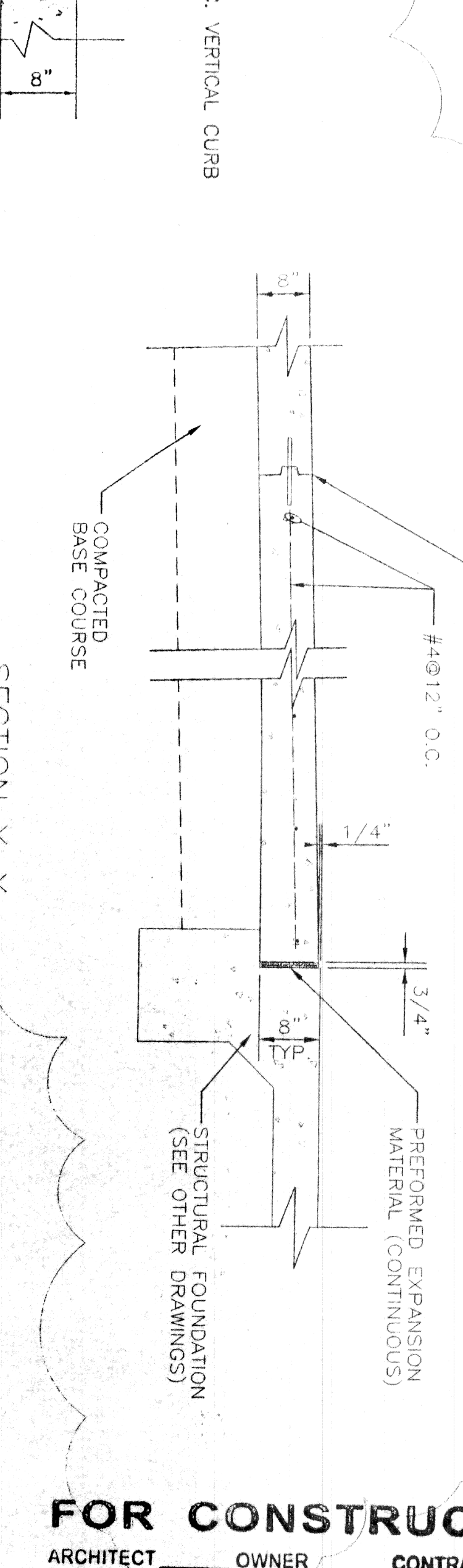
SECTION A-A



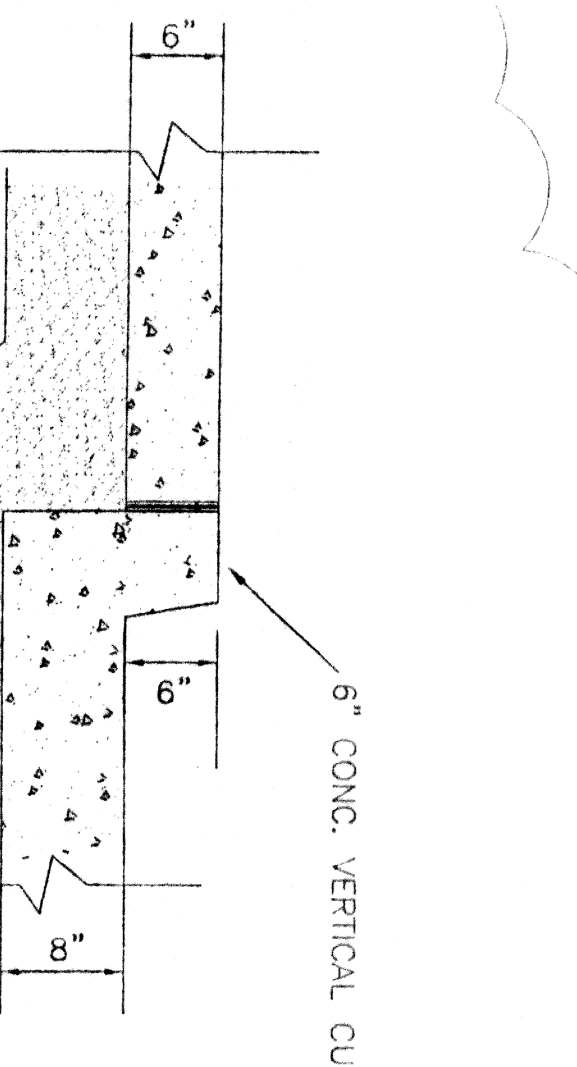
SECTION X-X



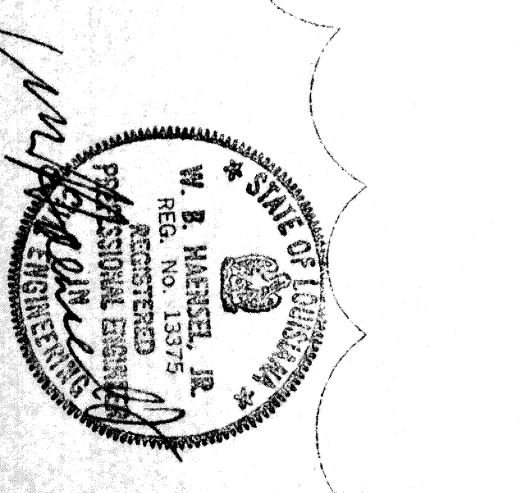
SECTION Z-Z



SECTION Y-Y



SECTION B-B



DATE	DESCRIPTION	DESIGNER	CHECKER
12/10/02	REVISIONED TO ADD SECTIONS B-B AND Y-Y	W. B. WINTERS	W. B. WINTERS
DATE	DESCRIPTION	DESIGNER	CHECKER
12/10/02	REVISIONED TO ADD SECTIONS B-B AND Y-Y	W. B. WINTERS	W. B. WINTERS

KREBS, LaSALLE, LeMIREX, CONSULTANTS, INC.
 ENGINEERING • PLANNING • SUPERVISION • HYDROLOGIC • ENVIRONMENTAL
 3013 27TH STREET, SUITE 200, MONROE, LA 70002 (504) 833-4470
 2107 NOLAVIEW BLVD., SUITE F, MONROE, LA 70002 (504) 833-5122
 DATE: 12/10/02 SCALE: AS NOTED DRAWING NO. 9 OF 14

HONDA DEALERSHIP
 LAKE SHORE ESATES
 ST. TAMMANY PARISH, LA
PAVEMENT DETAILS
 ARCHITECT: OWNER: CONTRACTOR:
 DATE: 12/10/02

FOR CONSTRUCTION