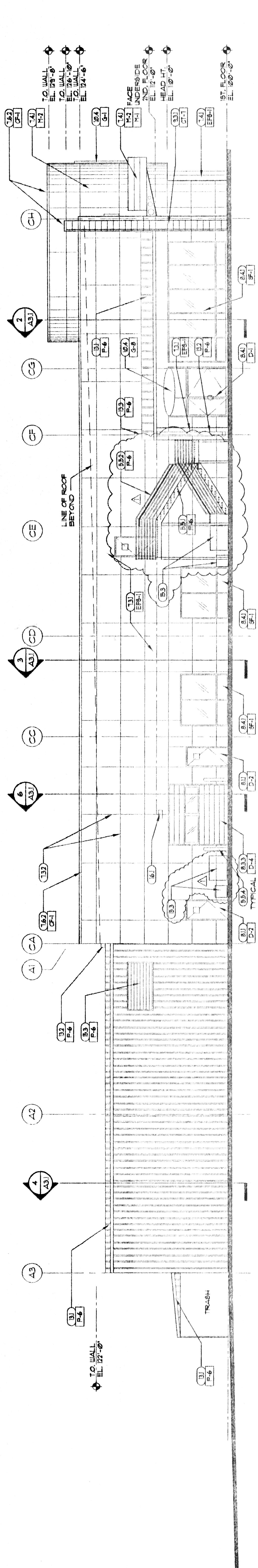
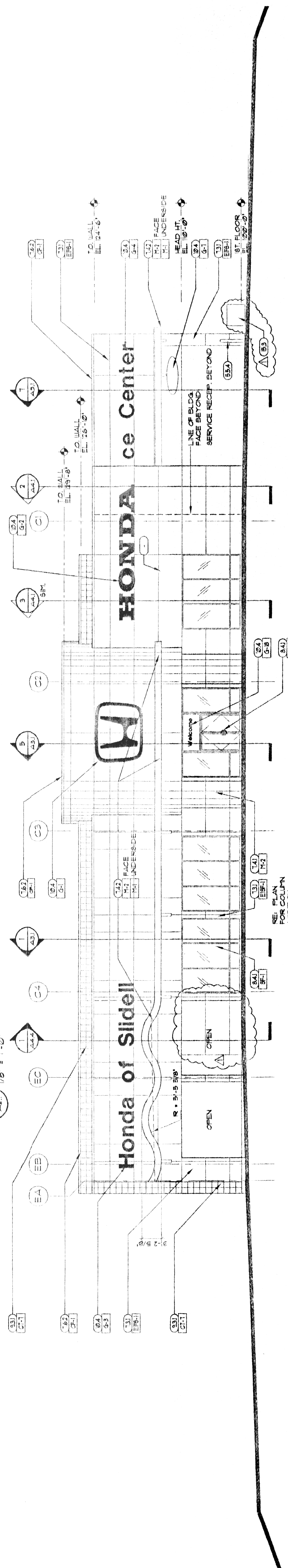


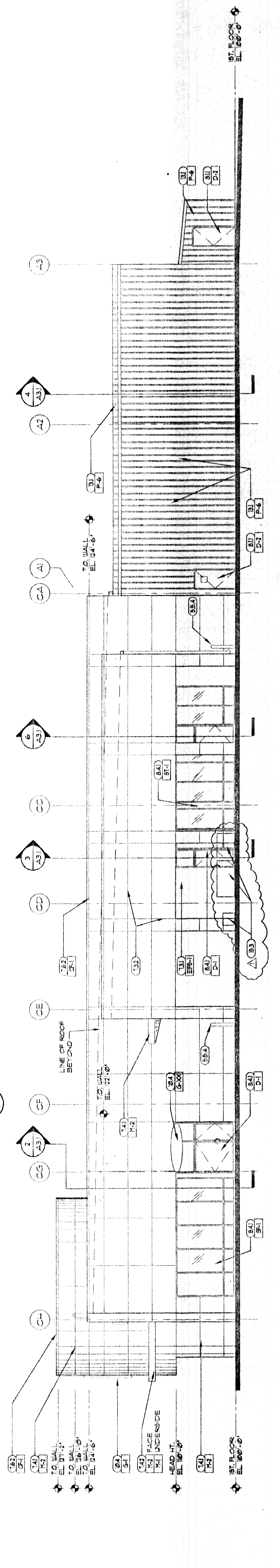
- KEYED NOTES**
- (2) RE. CIVIL FOR EXTERIOR PAVING
 - (3) 1/2" EXP. JT.
 - (3.1) CONCRETE FOUNDATION RE. STRUCT.
 - (3.2) CONC. SLAB ON PREPARED GRADE
 - (3.3) CONC. FLOOR ON VTL. DECK
 - (4) CH WALL RE. STRUCT. FOR REINFT.
 - (5) STEEL BEAM RE. STRUCT.
 - (6) STEEL COLUMN RE. STRUCT.
 - (7) STEEL JOIST RE. STRUCT.
 - (8) STEEL DECK RE. STRUCT.
 - (9) COLD FORMED STEEL SHAPING RE. STRUCT.
 - (10) 5/8" GTP SHEATHING
 - (11) AIR INFILTRATION BARRIERS
 - (12) STEEL STAIRS
 - (13) 1 1/2" DIA. ST. PIPE GUARDRAIL/HANDRAIL
 - (14) 6" DIA. PIPE BOLLARD
 - (15) 3/4" EXTERIOR GRADE PL. WOOD
 - (16) WOOD BLOCKING/NO. COBE.
 - (17) FLAS. LAM. COUNTERTOP
 - (18) FLAS. LAM. CABINETS
 - (19) WOOD SHELVES
 - (20) BATT INSUL. WHERE REQUIRED SEE SECTION
 - (21) ACoustICAL BATT INSULATION
 - (22) EIFS, TECH. ATTACH.
 - (23) EIFS FORCED REVEAL
 - (24) HONDA COLOR COMPOSITE METAL PANELS
 - (25) HONDA CANOPY/WAVE
 - (26) 24 GA. GALV. BHT. VTL. COPING
 - (27) SEALANT JOINT
 - (28) HM DOOR AND FRAME
 - (29) 8C WOOD DOOR
 - (30) ACCESS PANEL
 - (31) COLING FIRE DOOR/HR
 - (32) OVERHEAD SECTIONAL DOOR
 - (33) COLING CENTER SHUTTER
 - (34) ANOD. ALUM. STONEWORK/ENHANCED UNIFORM
 - (35) ANOD. ALUM. FLASHING/TIT TO MATCH STONEWORK SYSTEM
 - (36) 1" LOW E GLAZING
 - (37) 1/4" CLEAR GLAZING
 - (38) METAL STUD PARTITION OR FARRING RE. SCHEM.
 - (39) SLIP JOINT
 - (40) SUPP. GYP. BO. CEILING
 - (41) 5/8" GTP. BO. TYPE 'X'
 - (42) 5/8" GTP. SORT. BO.
 - (43) CERAMIC TILE
 - (44) PORCELAIN TILE
 - (45) ACoustICAL PANEL CEILING (A/C)
 - (46) RESILIENT TILE FLOORING
 - (47) RESILIENT BASE
 - (48) CARPET
 - (49) PAINT
 - (50) EPOXY PAINT
 - (51) FIBERGLASS PANEL (FRP)
 - (52) VNTL. WALL COVERING (VWC)
 - (53) TOILET COMPARTMENT
 - (54) SIGNAGE BY OWNER
 - (55) SIGN
 - (56) LOCKERS
 - (57) FIRE EXTINGUISHER
 - (58) TOILET ACCESSORIES RE. BOED.
 - (59) EQUIPMENT BY OWNER
 - (60) SYS. FURNITURE BY OTHERS
 - (61) G.C. COORD. INSTALLATION
 - (62) METAL BUILDING SYSTEM
 - (63) BUTTER
 - (64) FLASHING
 - (65) RE. TECH. FOR PUMPING FIXTURES
 - (66) RE. TECH. FOR HVAC
 - (67) RE. ELEC. FOR LIGHTING



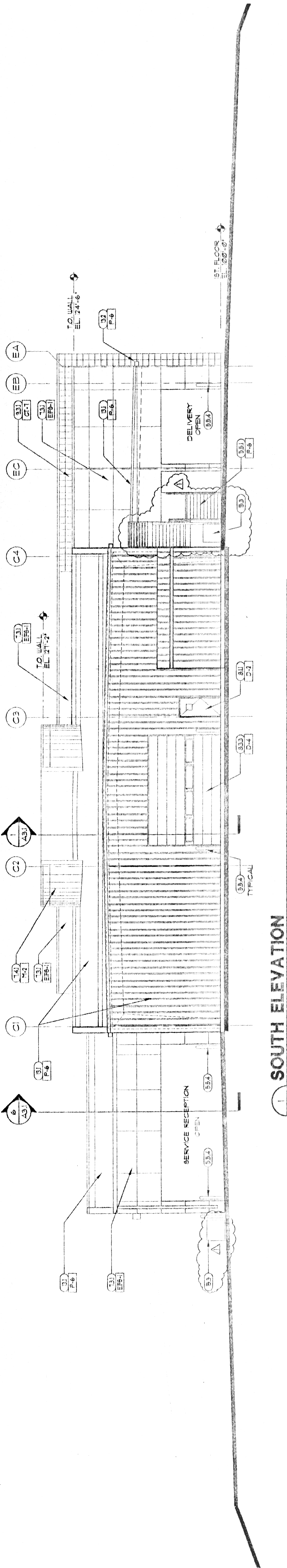
4 EAST ELEVATION
 1/8" = 1'-0"



3 NORTH ELEVATION
 1/8" = 1'-0"



2 WEST ELEVATION
 1/8" = 1'-0"



1 SOUTH ELEVATION
 1/8" = 1'-0"