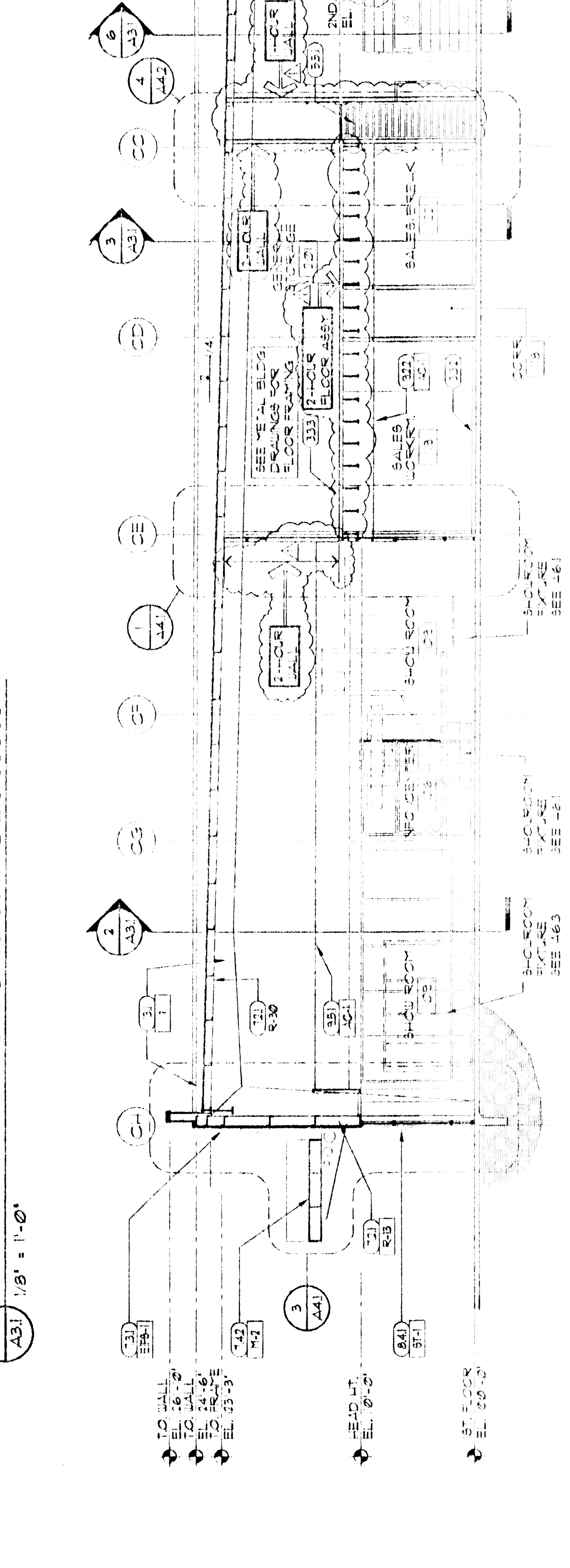
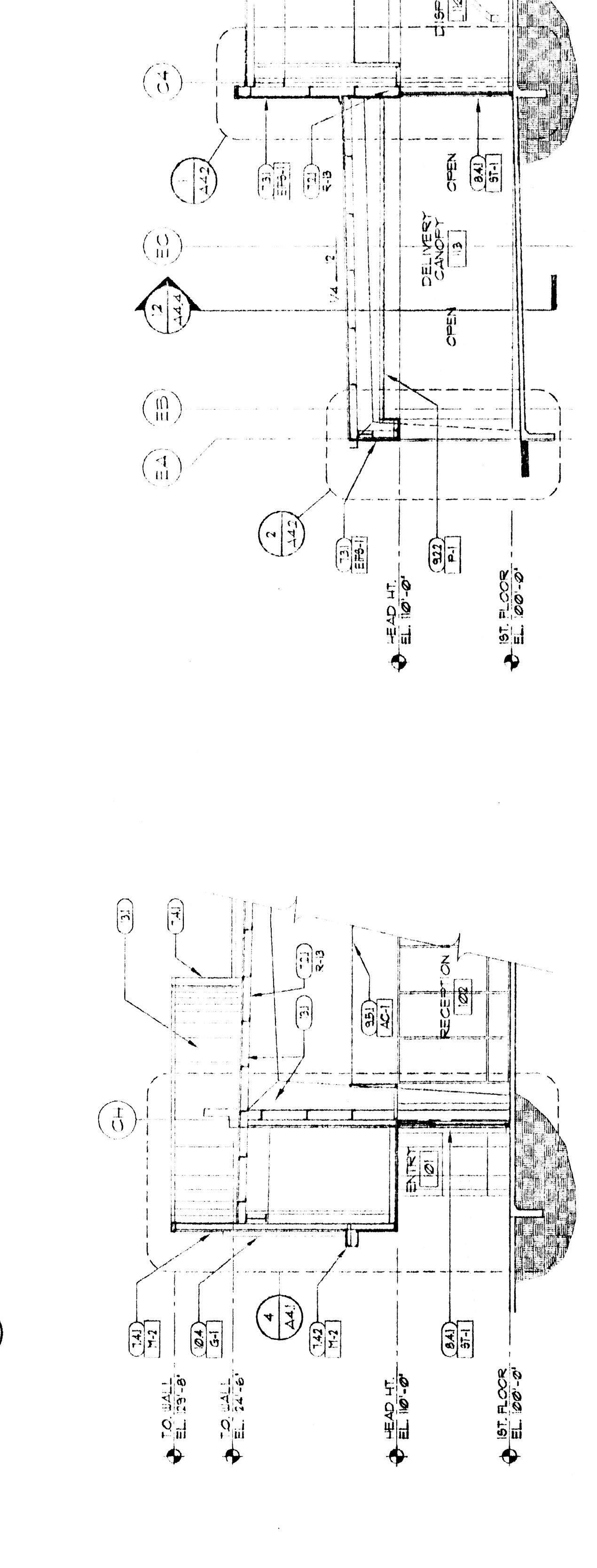
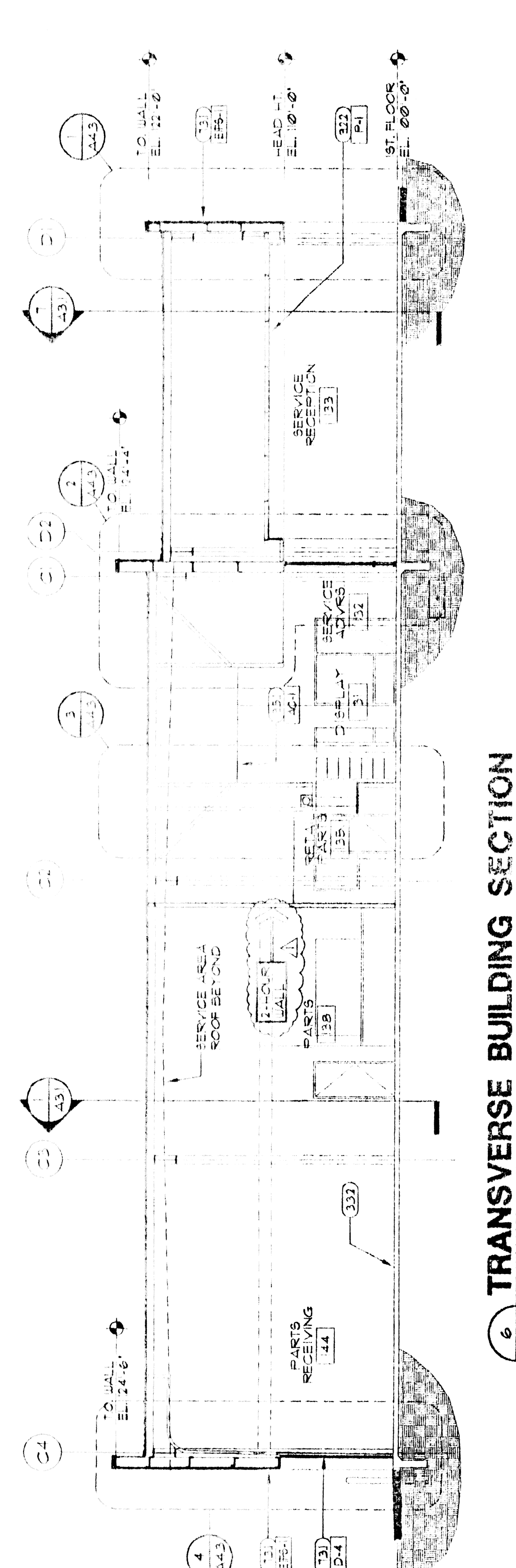
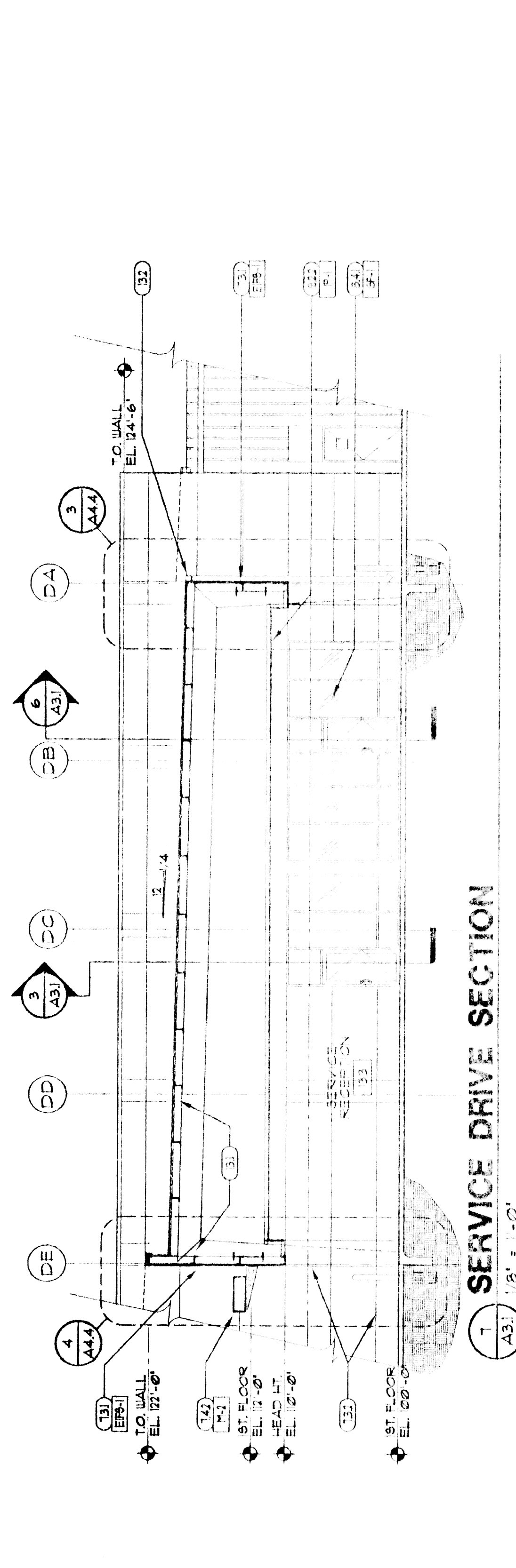
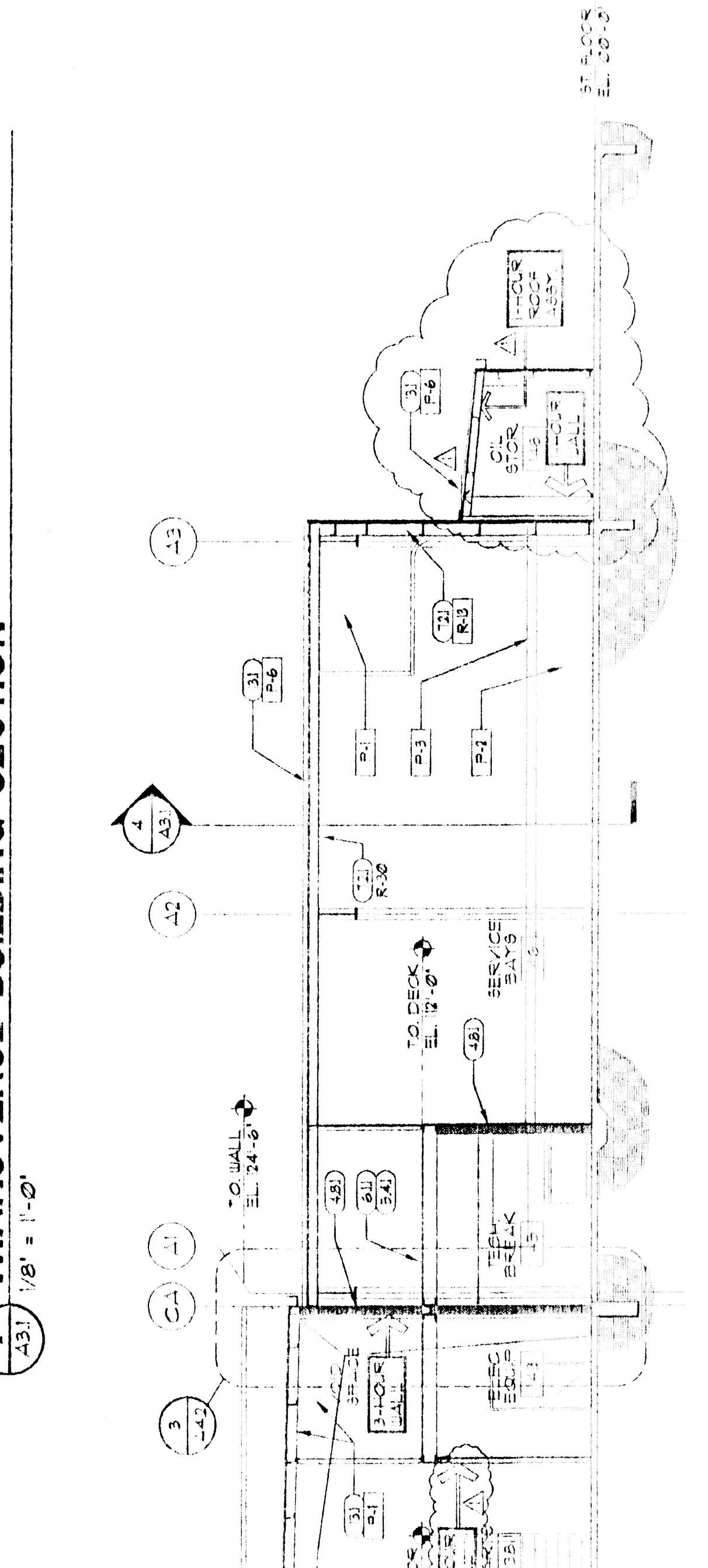
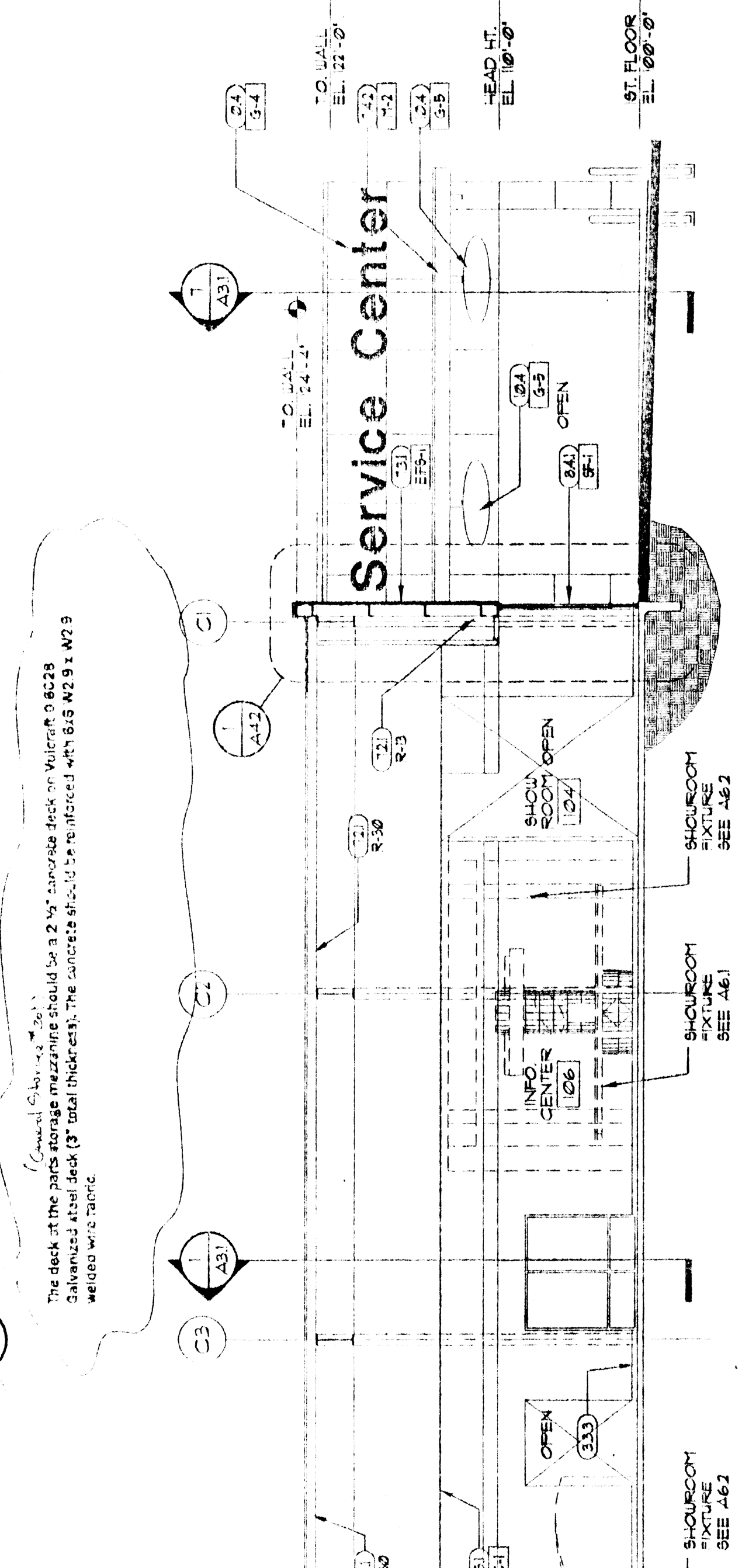
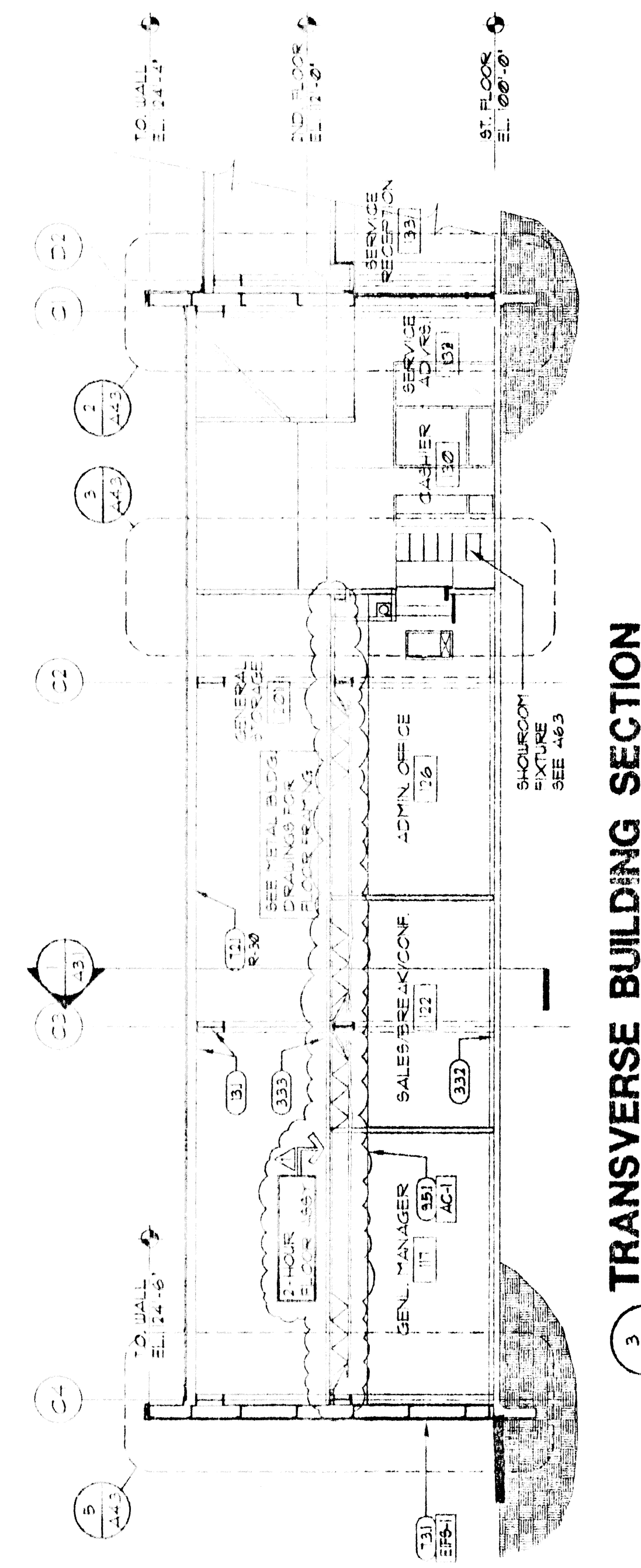
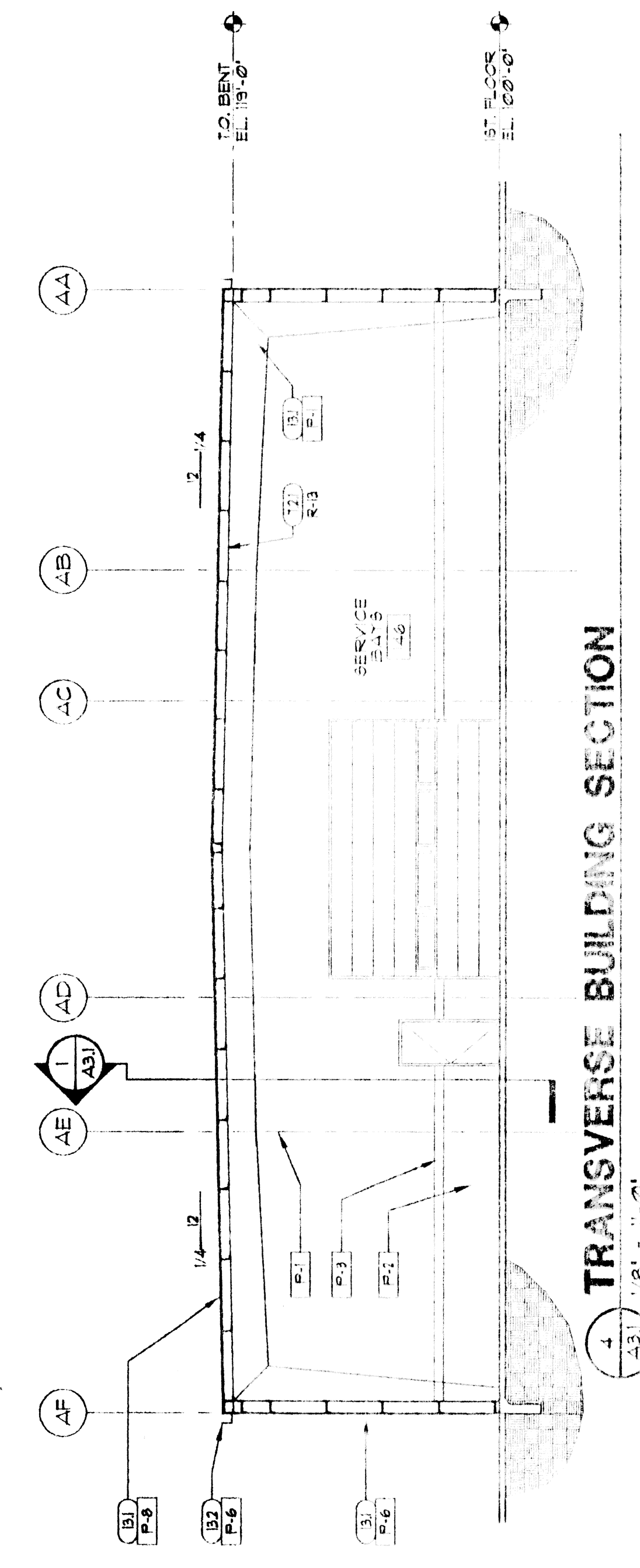


- KEYED NOTES**
- 3.1 RE: CIVIL FOR EXTERIOR PAVING
 - 3.11 1/2" EXP. JT.
 - 3.31 CONCRETE FOUNDATION RE: STRUCT.
 - 3.32 CONC. SLAB ON PREPARED GRADE
 - 3.33 CONC. FLOOR ON MTL. DECK
 - 3.41 CMU WALL RE: STRUCT. FOR REIN.
 - 3.42 STEEL BEAM RE: STRUCT.
 - 3.43 STEEL COLUMN RE: STRUCT.
 - 3.44 STEEL JOIST RE: STRUCT.
 - 3.45 STEEL DECK RE: STRUCT.
 - 3.46 CORRUGATED STEEL PAVING RE: STRUCT.
 - 3.47 3/8" Ø" SEATING
 - 3.48 AIR FILTRATION BARRIER
 - 3.49 STEEL STAIR
 - 3.51 1/2" DIA. ST. PIPE GUARDRAIL HANDRAIL
 - 3.52 6" DIA. PIPE BOLLARD
 - 3.53 3/4" EXTERIOR GRADE PL. WOOD
 - 3.54 WOOD BLOCKING-NON COPES
 - 3.55 PLAS. LAM. COUNTERTOP
 - 3.56 PLAS. LAM. CABINETS
 - 3.57 WOOD SHELVER
 - 3.58 BATT INSUL WHERE REQUIRED SEE SECTION
 - 3.59 ACoustICAL BATT INSULATION
 - 3.61 EPS. TECH. ATTACH
 - 3.62 EPS. FORTED REVEAL
 - 3.63 HONDA COLOR COMPOSITE METAL PANELS
 - 3.64 HONDA CANOPY / WAIVE
 - 3.65 24 GA. GALV. SHIT. MTL. COILING
 - 3.66 SEALANT JOINT
 - 3.67 IN. DOOR AND FRAME
 - 3.68 5/8" WOOD DOOR
 - 3.69 ACCESS PANEL
 - 3.71 COILING FIRE DOOR-1 HR
 - 3.72 OVERHEAD SECTIONAL DOOR
 - 3.73 COILING COUNTERTOP SHUTTER
 - 3.74 ANOD. ALUM. STOREFRONT/ ENTRANCE WINDOW
 - 3.75 ANOD. ALUM. FLASHING/MENT TO MATCH STOREFRONT SYSTEM
 - 3.76 1" LOW E" GLAZING
 - 3.77 1/4" CLEAR GLAZING
 - 3.78 METAL STUD PARTITION OR FLOORING RE: SCHED.
 - 3.79 SLIP JOINT
 - 3.81 8/16" Ø" B.D. CEILING
 - 3.82 3/8" Ø" B.D. TYPE 'X'
 - 3.83 3/8" Ø" B.D. SOFFIT B.D.
 - 3.84 CERAMIC TILE
 - 3.85 PORCELAIN TILE
 - 3.86 ACoustICAL PANEL CEILING (S.A.T.C.)
 - 3.87 RESILIENT TILE FLOORING
 - 3.88 RESILIENT BASE
 - 3.89 CARPET
 - 3.91 PAINT
 - 3.92 EPOXY PAINT
 - 3.93 FIBERGLASS PANEL (FRP)
 - 3.94 VENTIL. WALL COVERING (W.L.C.)
 - 3.95 TOILET COMPARTMENT
 - 3.96 SIGNAGE BY OWNER
 - 3.97 SIGN
 - 3.98 LOCKERS
 - 3.99 FIRE EXTINGUISHER
 - 3.10 TOILET ACCESSORIES RE: SCHED.
 - 3.11 EQUIPMENT BY OWNER
 - 3.12 S'YS. FINISHES BY OTHERS G.C. COORD. INSTALLATION
 - 3.13 METAL BUILDING SYSTEM
 - 3.14 GUTTER
 - 3.15 FLASHING
 - 3.16 RE: MECH. FOR PUMPING PIPES
 - 3.17 RE: MECH. FOR HVAC
 - 3.18 RE: ELEC. FOR LIGHTING

NOTE: REFER TO STRUCTURAL DRAWINGS FOR ALL FOUNDATIONS



1 LONGITUDINAL BUILDING SECTION

The deck at the base of the main storage mezzanine shall be 2" by 2" concrete slab on Weyerhaeuser's 8228 joists spaced 16" o.c. and 1/2" total thickness. The joists shall be protected with 1/2" G.P.S. 1/4" x 1/4" x 1/4" metal plates.