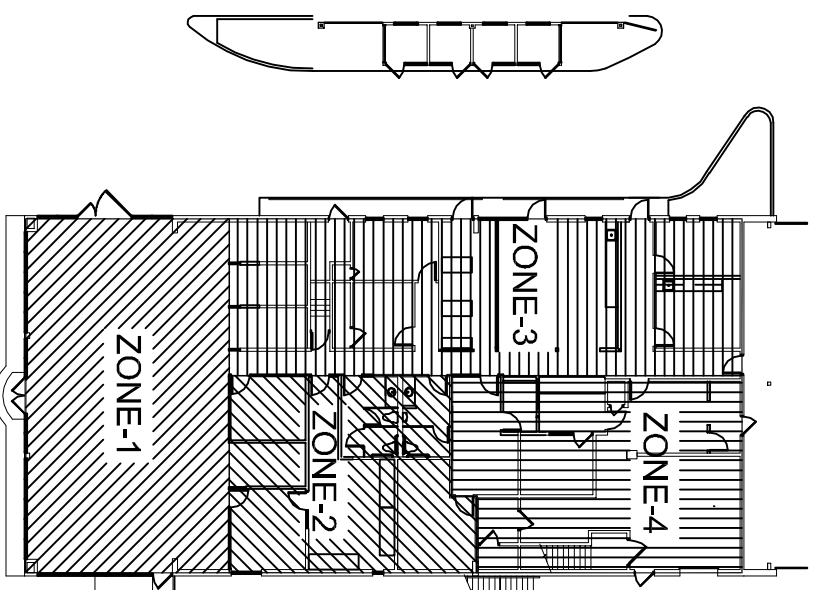
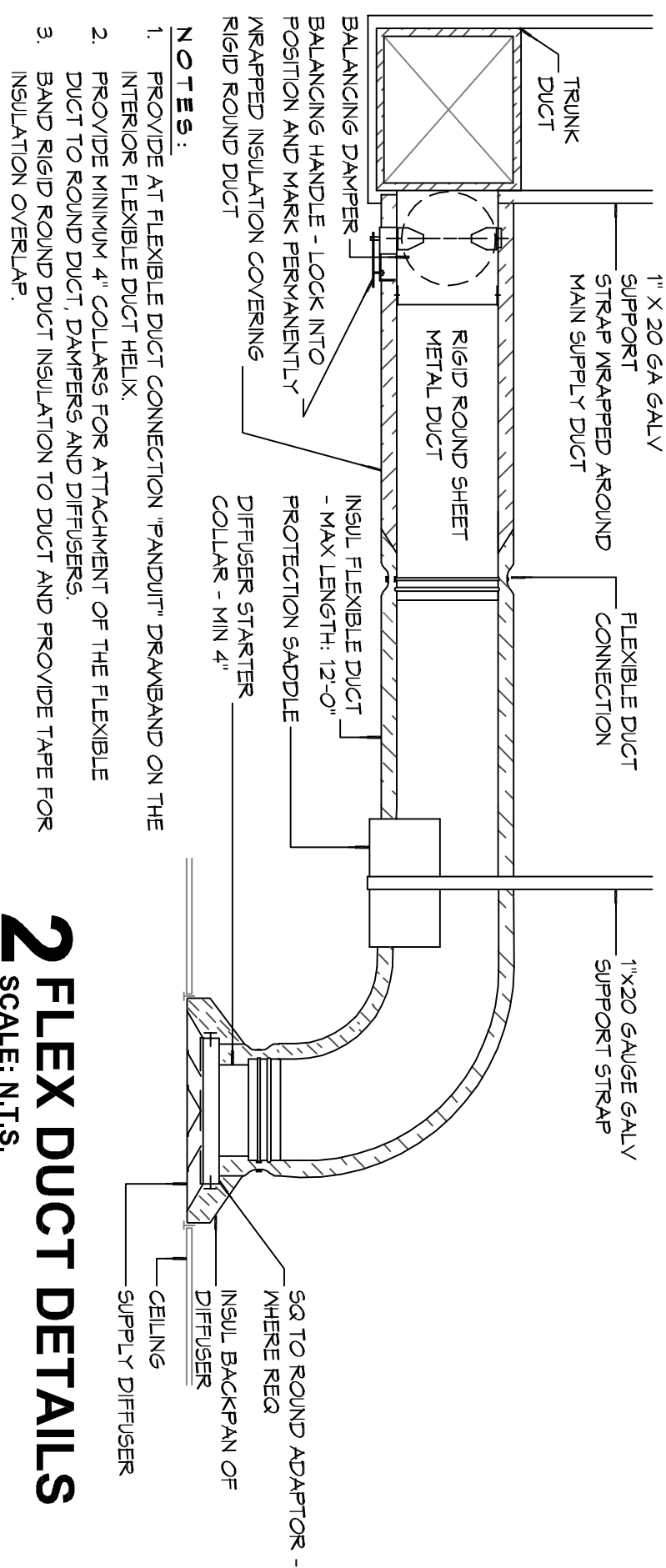


SITE CONDITION NOTE:

DESIGN FOR RENOVATION WAS DERIVED FROM INFORMATION FROM DRAWINGS PROVIDED BY OWNER. ACTUAL ON-SITE CONDITIONS MAY VARY FROM THE INFORMATION PROVIDED. DESIGNER ASSUMES NO RESPONSIBILITY FOR DISCREPANCIES FROM DRAWINGS, FIELD CONDITIONS AND SPECIES OF PLANT MATERIALS FROM DRAWINGS FROM 10/20/2018 ON.

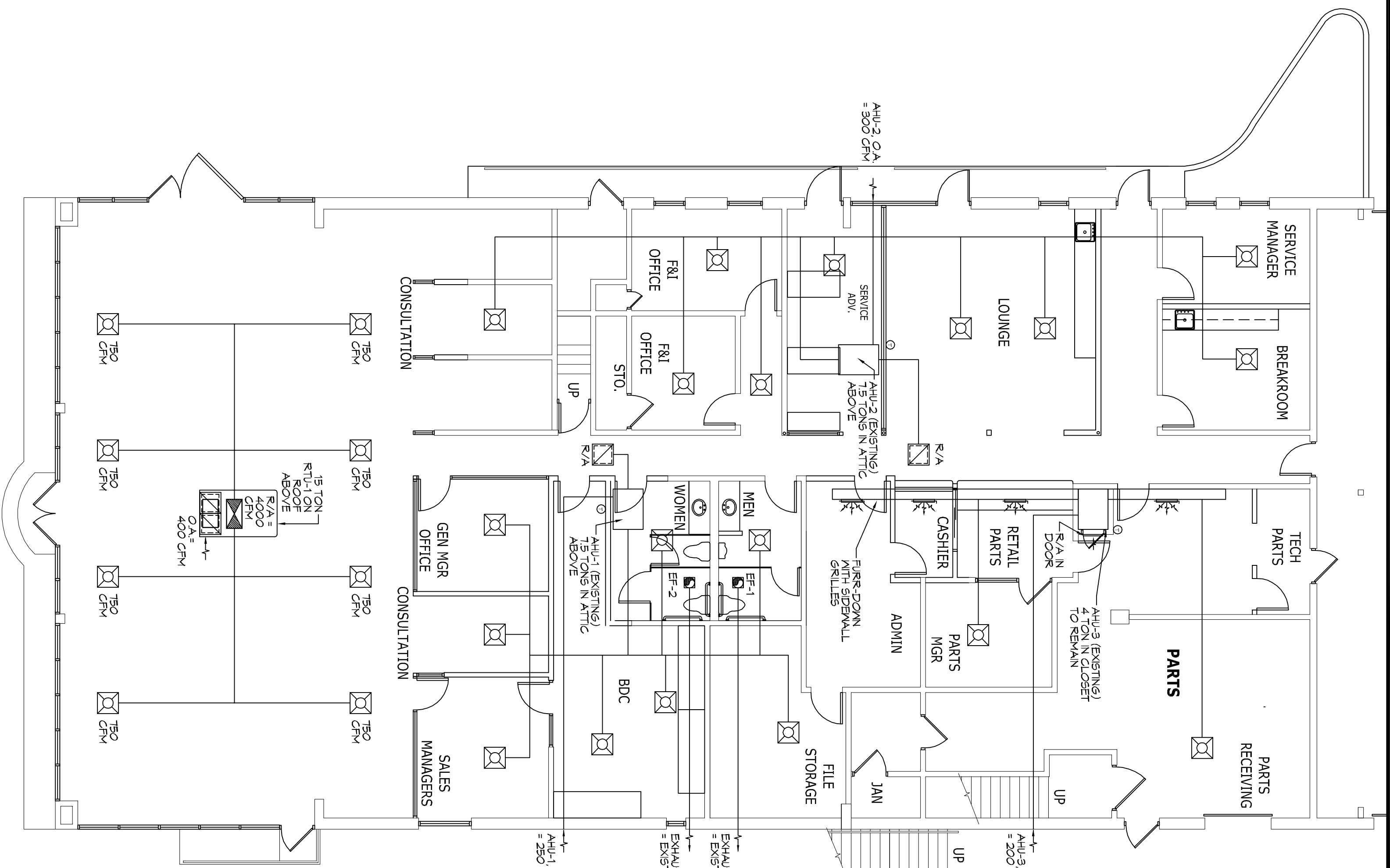


KEY PLAN



2 FLEX DUCT DETAILS
SCALE: 1/8"=1'-0"

3 RIGID DUCT DETAILS
SCALE: 1/8"=1'-0"

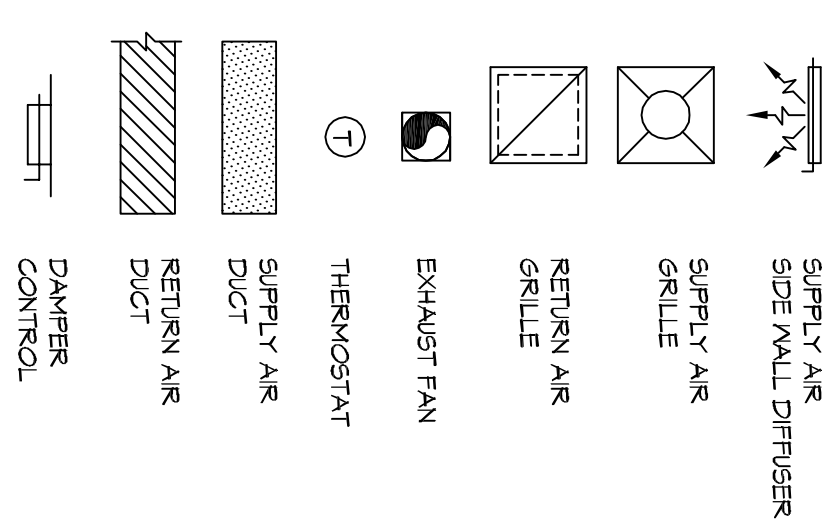


1 MECHANICAL FLOOR PLAN
SCALE: 1/8"=1'-0"

MECHANICAL HVAC NOTES

1. CONCEALED DUCTWORK TO BE GALVANIZED SHEET METAL LINED WITH FIBROGLASS GLASS DUCT LINER, MIN R-6. INSTALLED PER SMACNA STANDARDS.
2. EXPOSED DUCTWORK TO BE GALVANIZED SHEET METAL LINED WITH FIBROGLASS GLASS DUCT LINER, MIN R-6. INSTALLED PER SMACNA STANDARDS.
3. ROUND FLEXIBLE DUCT TO BE UL-181, CLASS 1, AIR DUCT MATERIALS.
4. IN ALL SYSTEMS OVER 2000 CFM AND LESS THAN 15,000 CFM, SPOKE TYPE FANS SHALL BE USED TO EXHAUST AIR FROM THE SYSTEM. ALL THE RETURN DUCT DOWNSTREAM OF THE AIR HANDLING UNIT AND ALL FILTERS TO AUTOMATICALLY STOP THE FAN.
5. PROVIDE UL LISTED 125 F° FREESTAT IN RETURN AIR OF EACH SYSTEM UNDER 2000 CFM TO SHUT DOWN THE FAN IN THE EVENT OF FIRE.
6. PROVIDE UL RATED FIRE DAMPERS WHERE REQUIRED AT ALL DUCT PENETRATIONS OF FIRE-RATED ASSEMBLIES AND WHERE REQUIRED BY CODE INCLUDING OUTSIDE AIR INTAKES AND EXHAUST FANS.
7. CONDENSATE PANS TO BE PVC PIPE RUN TO PLUMBERS P-TRAP WITH FIVE FEET OF AIR HANDLING UNITS.
8. ALL AIR HANDLING SYSTEMS TO BE BALANCED TO ASSURE PROPER AIR FLOWS PER PLANS.
9. ALL THERMOSTATS TO BE AUTOMATIC CHANGEOVER WITH HEAT SWITCH.
10. EXHAUST FAN SHALL BE CONTROLLED BY A SWITCH ON THE WALL IN THE SAME LOCATION AS LIGHT SWITCH(6). PROVIDE BACK DRAFT DAMPER.
11. PROVIDE AND INSTALL WATER PROOF GRILLE VENT IN PROPER ROOF LOCATION FOR PLUMBING FIXTURE EXHAUST.
12. ALL SUPPLY AIR VENTS SHALL BE EQUIPPED WITH AIR CONTROL DAMPERS AT THE REGISTER.
13. REFRIGERANT LINES SHALL BE SIZED BY JUNIT MANUFACTURERS AND INSTALLED ACCORDING TO MANUFACTURERS' INSTRUCTIONS.
14. ALL ELECTRICAL, MECHANICAL, AND PLUMBING PENETRATING FIRE WALLS SHALL BE FIRE CALKED. (PENETRATIONS THROUGH RATED CONSTRUCTION SHALL BE SEALED WITH A MATERIAL CAPABLE OF PREVENTING THE PASSAGE OF FLAMES AND HOT GASES WHEN TESTED IN ACCORDANCE WITH ASTM E-814).
15. ALL MECHANICAL SYMBOLS ARE DRAWN DIAGNOMATICALY. CONTRACTOR TO VERIFY WITH OWNER LOCATIONS OF VENTS, DAMPERS, REGISTERS, ETC.
16. FINAL LOCATION OF TEMPERATURE CONTROLS TO BE COORDINATED WITH OWNER AT JOB SITE.
17. PROVIDE AND INSTALL SMOKE DETECTORS, AS APPROVED BY LOCAL AGENCY, IN ALL AREAS WHERE REQUIRED BY CODE AND PROVIDE WITH ACCESS PANEL, INSURING BY ELECTRICAL CONTRACTOR.
18. FRESH AIR INTAKES ARE REQUIRED TO HAVE VOTORIZED OR GRAVITY DAMPERS TO SHUT OFF WHEN SYSTEM IS NOT RUNNING.
19. PROVIDE BIRD SCREENS AT ALL EXTERIOR MECHANICAL PENETRATIONS.
20. PROVIDE LATE MANUFACTURED THERMOSTAT LOCATIONS WITH ALL OWNER PARTITIONS. REFER TO ARCHITECTURAL DRAWINGS.
21. PROVIDE MIN 15.64 GALVANIZED SHEET METAL TO BLANK-OFF GABLE VENTS WHERE INTAKE/EXHAUST DUCTS OCCUR.

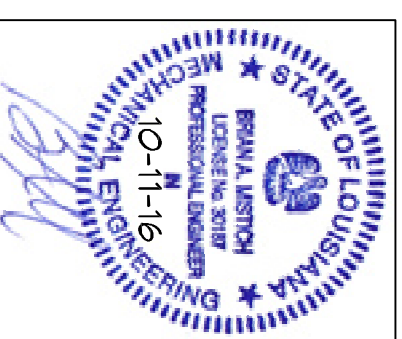
LEGEND



ROUND FLEX DUCT, MAX LENGTH 12'-0", MIN. R-6. PROVIDE MANI DAMPER AT DIFFUSER CONNECTIONS. DUCT SIZES PER CFMS AS FOLLOWS:
50 CFM = 5", 75 CFM = 6", 100 CFM = 7", 150 CFM = 8", 225 CFM = 9", 300 CFM = 10", 450 CFM = 12", 600 CFM = 14", 900 CFM = 16", 1500 CFM = 18", AND 1700 CFM = 20"

NEW RTU-1

TOTAL Btu	CFM	OA	WFR
180,000 Btu	6,000	400	PER OWNER



DAMMON ENGINEERING, INC.
LOUISIANA & MISSISSIPPI

A Dealership Renovation For:
Lakeshore Kia
330 E Howze Beach Rd.
Slidell, Louisiana 70461

Job No:
Date: 5-11-16
Drawn: msl

REVISIONS

CRESS & LOPRESTO ARCHITECTS L.L.C.
A PROFESSIONAL ARCHITECTURAL COMPANY
10606 COURSEY BLVD., STE. A
BATON ROUGE, LOUISIANA 70816
(225) 930-6040 FAX (225) 930-6045



Sheet No. **M100** of